

# EMBRYOLOGY PRACTICAL LECTURE - 5 - TRI LAMINAR GERM DISK

EDITED BY



© ALL COPYRIGHT ARE RESERVED FOR  
SATURN MEDIC AND ARECH

[WWW.SATURNMEDIC.COM](http://WWW.SATURNMEDIC.COM)

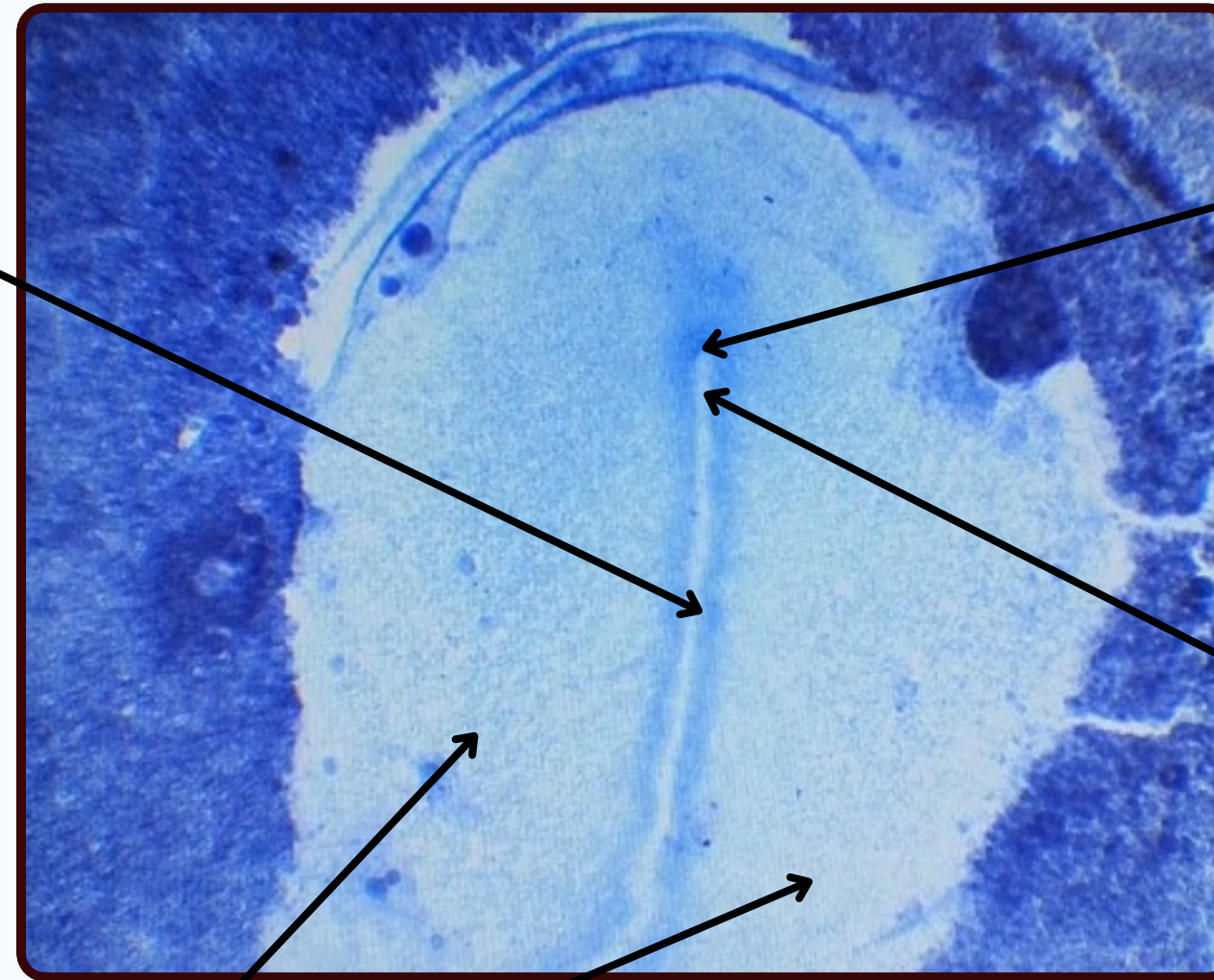


# TRI LAMINAR GERM DISK



## Primitive Streak

midline of the dorsal of epiblast



## Primitive Node

**characteristic:** thicker layers surrounding to the primitive streak

## Primitive Pit

**characteristic:** interiorly part of primitive streak

## Epiblast



# TRI LAMINAR GERM DISK

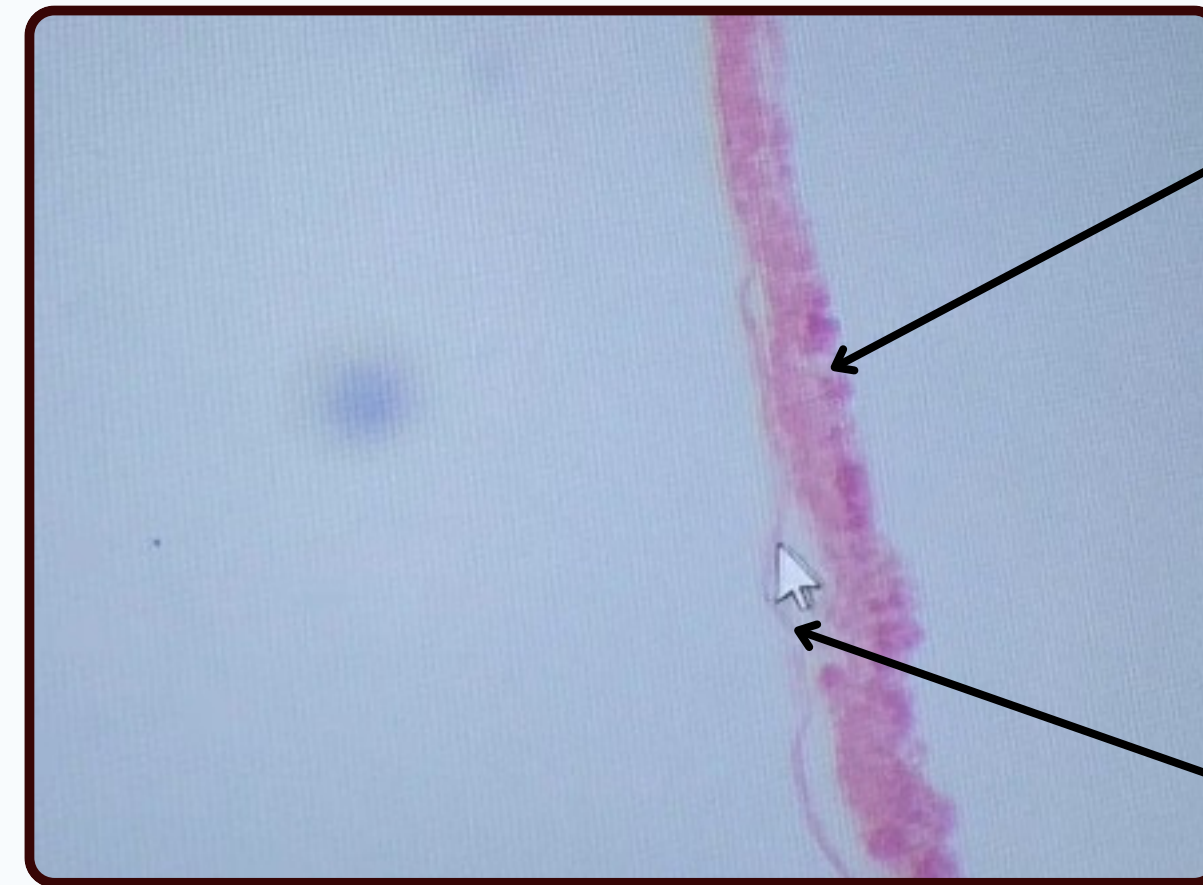
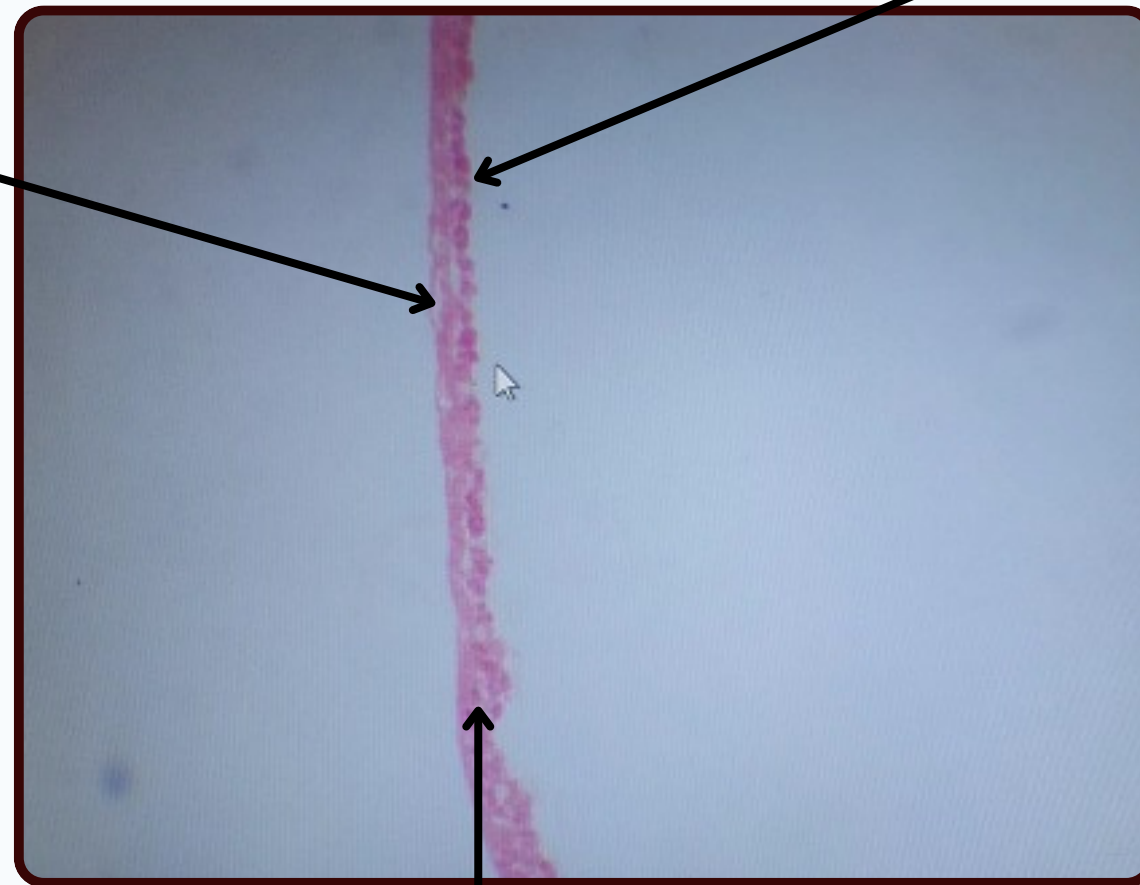


**Epiblast**

high columnar cells

**Hypoblast**

Small cuboidal cells



**Epiblast**

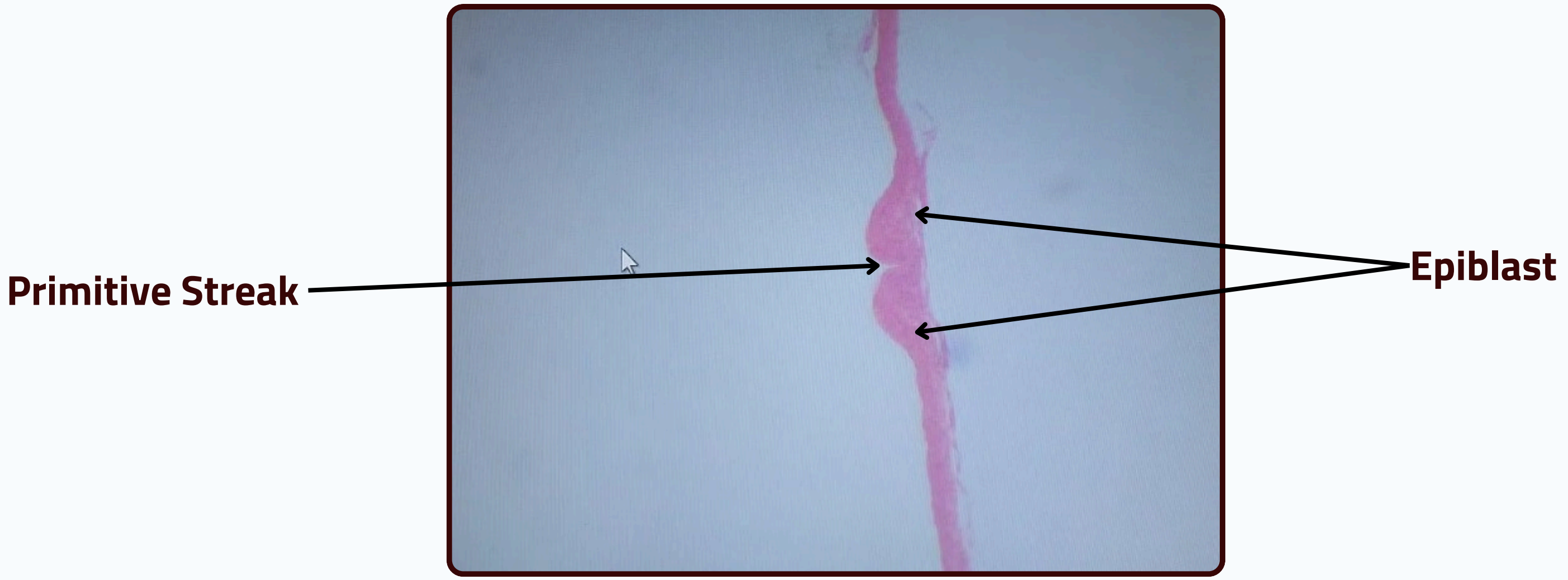
**Hypoblast**

**Amniotic Cavity**

appears between cells of epiblast

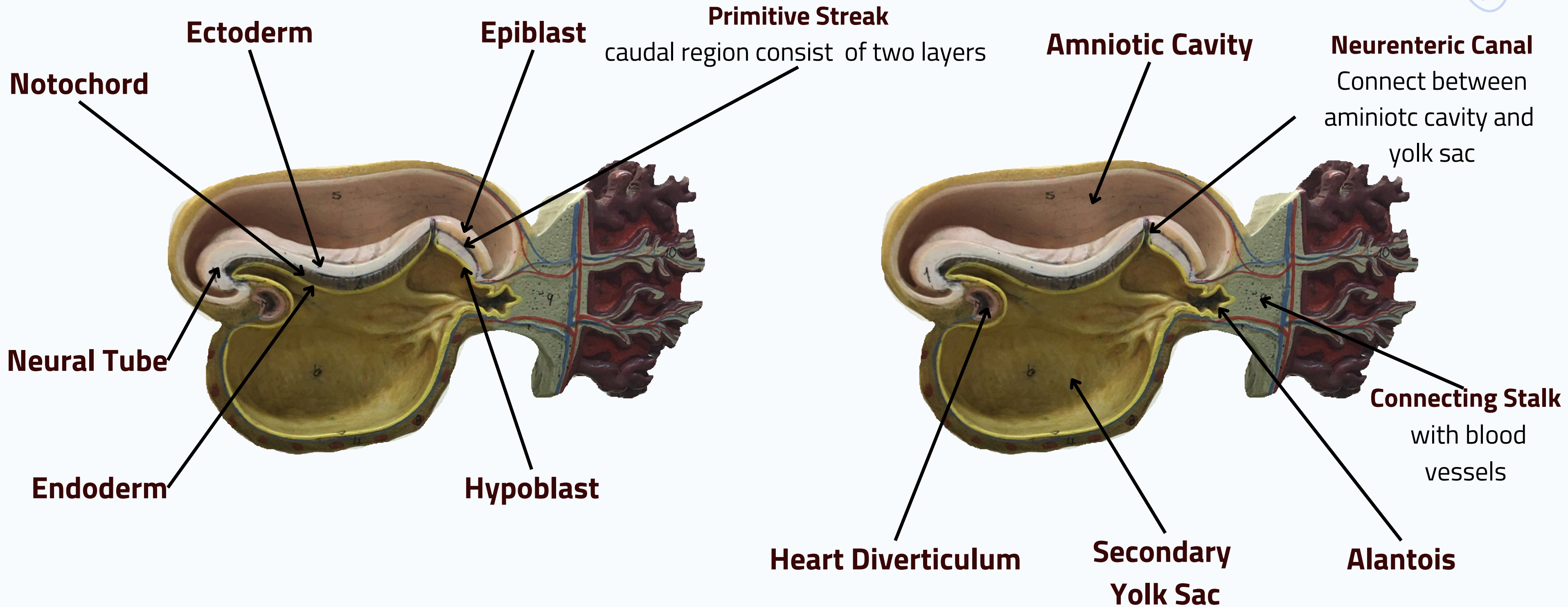


# TRI LAMINAR GERM DISK





# TRI LAMINAR GERM DISK



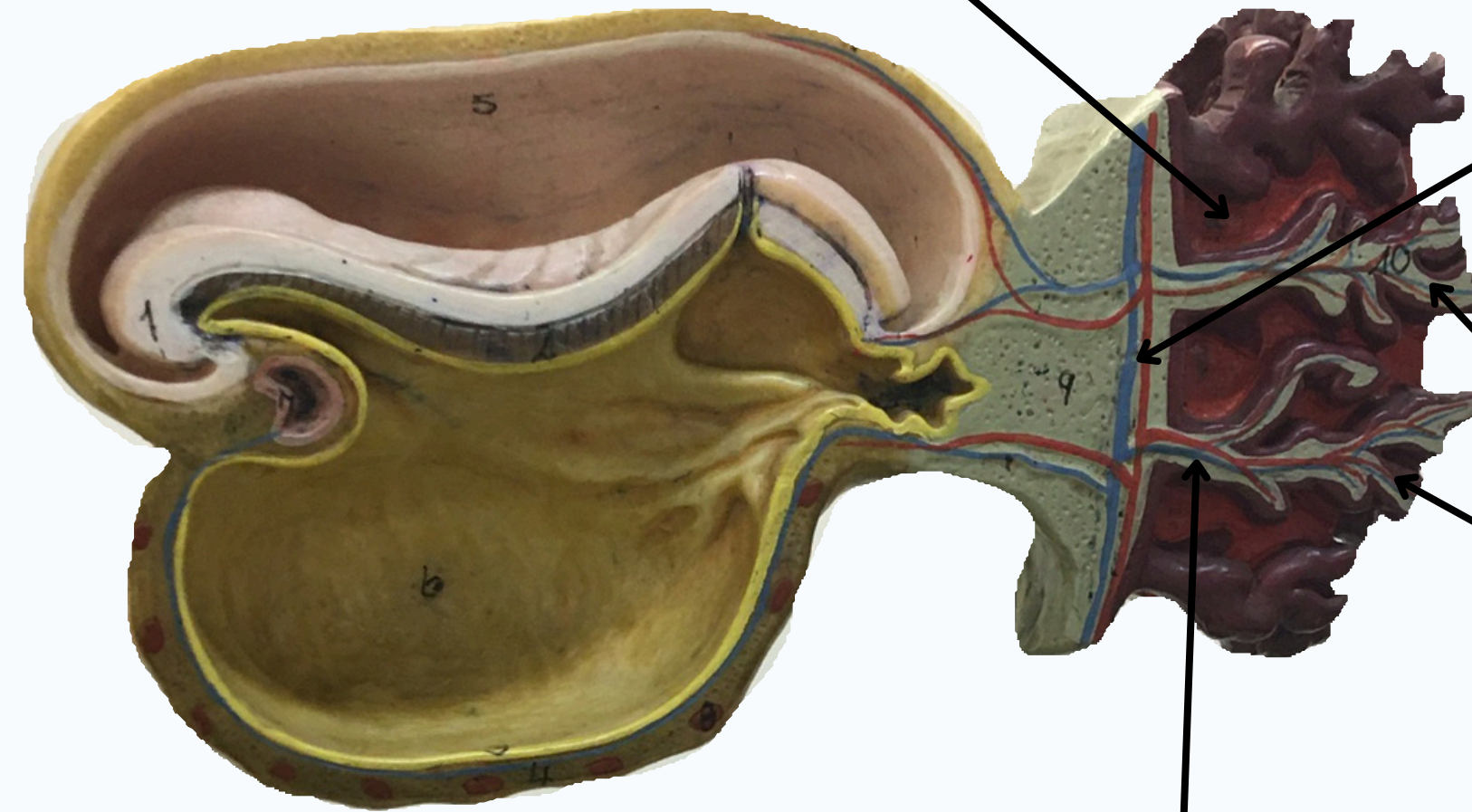




# TRI LAMINAR GERM DISK



**Intervillous Space**

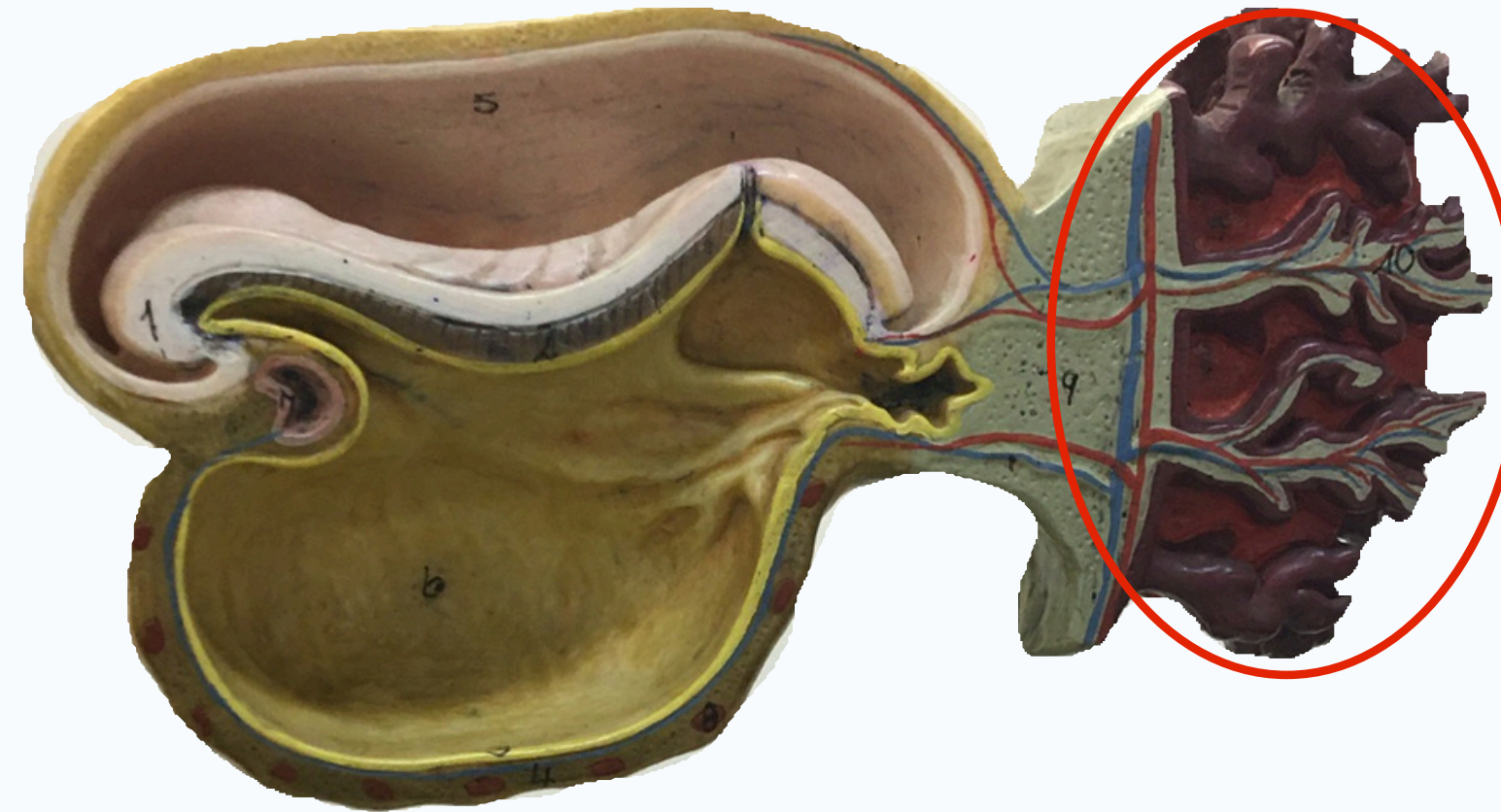


**Chorionic Plate**  
With blood vessels

**Tertiary Villi**

**Stem Villus**  
With blood vessels

# TRI LAMINAR GERM DISK



**Q\Give The Layers of This Structure?**

**A\It's tertiary villi and stem villus ,intervillus space with blood vessels**

# THANK YOU

EDITED BY



© ALL COPYRIGHT ARE RESERVED FOR  
SATURN MEDIC AND ARECH

[WWW.SATURNMEDIC.COM](http://WWW.SATURNMEDIC.COM)