

EMBRYOLOGY PRACTICAL LECTURE - 7 - THE HUMAN PLACENTA

EDITED BY



SATURN
MEDIC



ARECH

© ALL COPYRIGHT ARE RESERVED FOR
SATURN MEDIC AND ARECH

WWW.SATURNMEDIC.COM

THE HUMAN PLACENTA

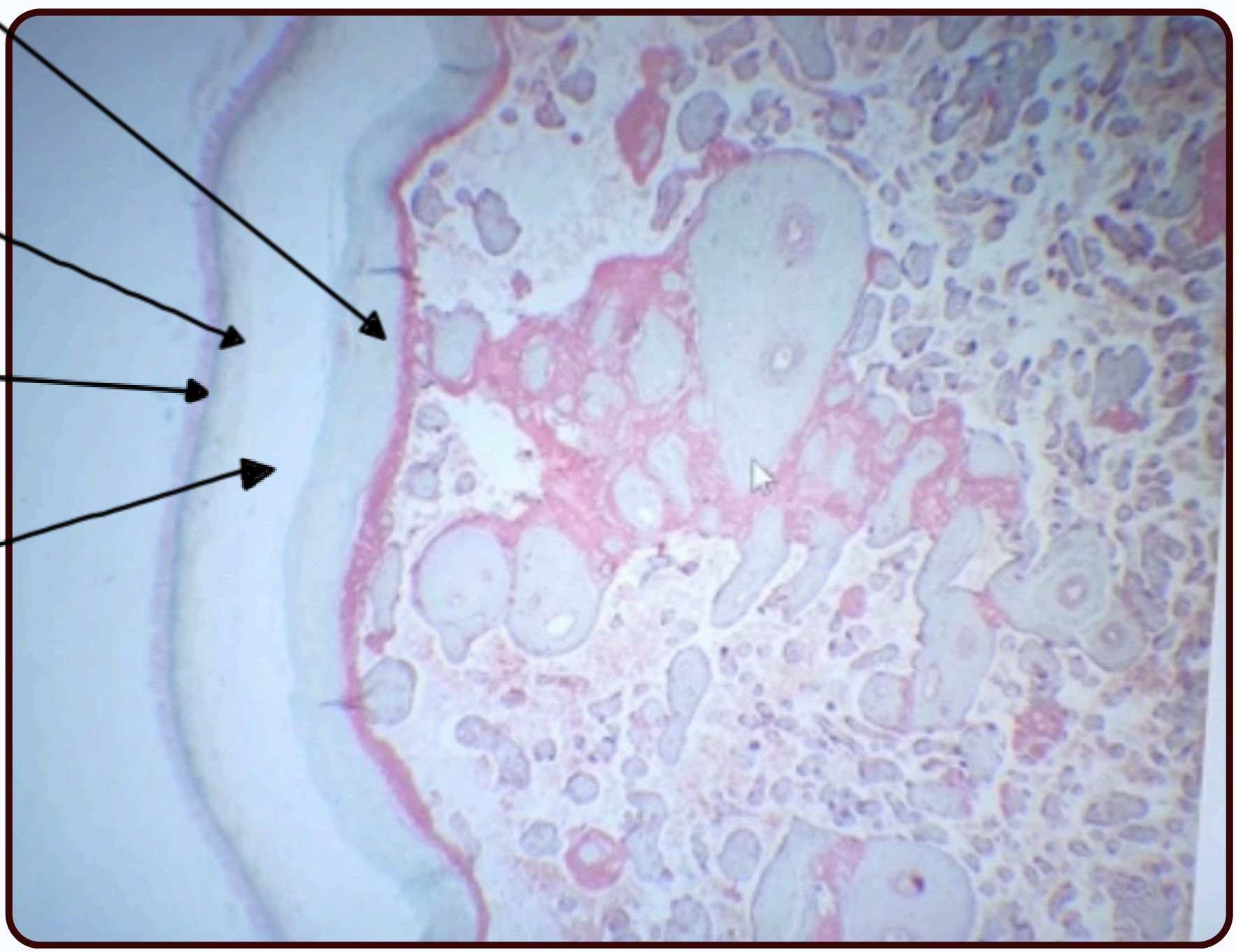


Trophoblast

Chorionic plate

Simple cuboidal epithelium

Connective tissue



THE HUMAN PLACENTA



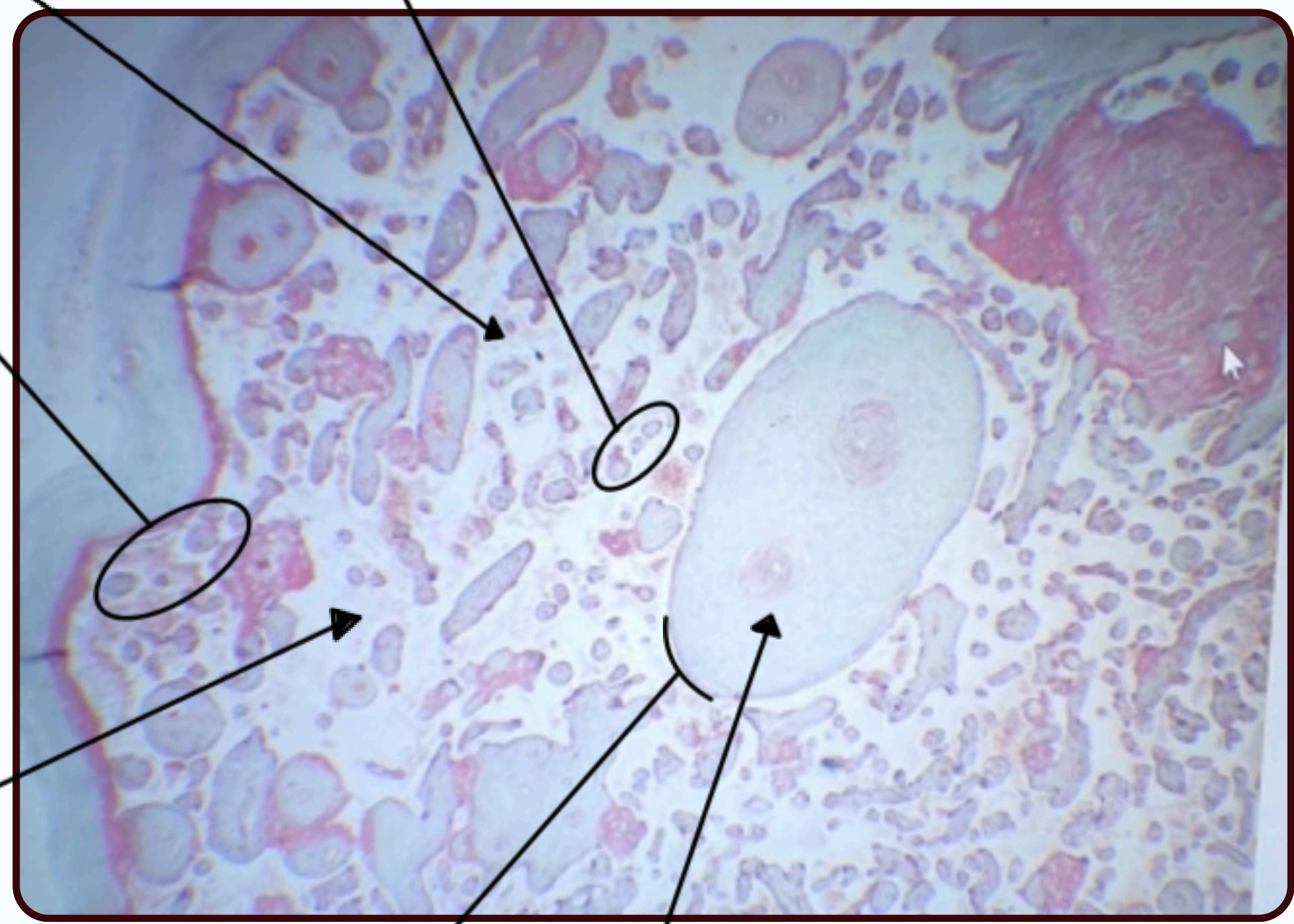
Blood vessels of the maternal

Free floating villi

stem villi Small

intervillous space

Large stem villi



Each villus will be covered by two layers: 1. Syncytiotrophoblast 2. cytotrophoblast



THE HUMAN PLACENTA

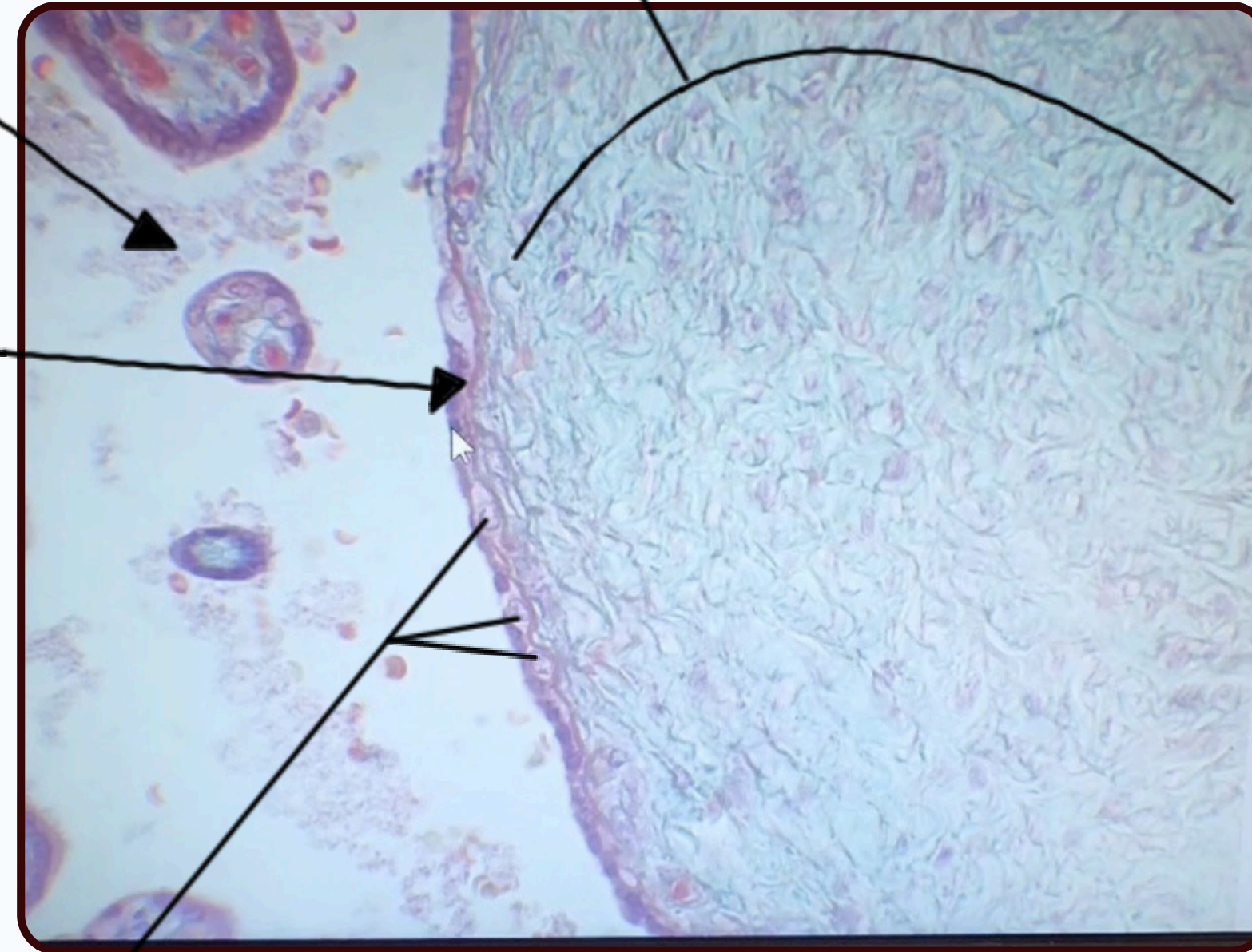


Mesenchymal Connective Tissue

maternal blood vessels
in the intervillous space

Syncytiotrophoblast

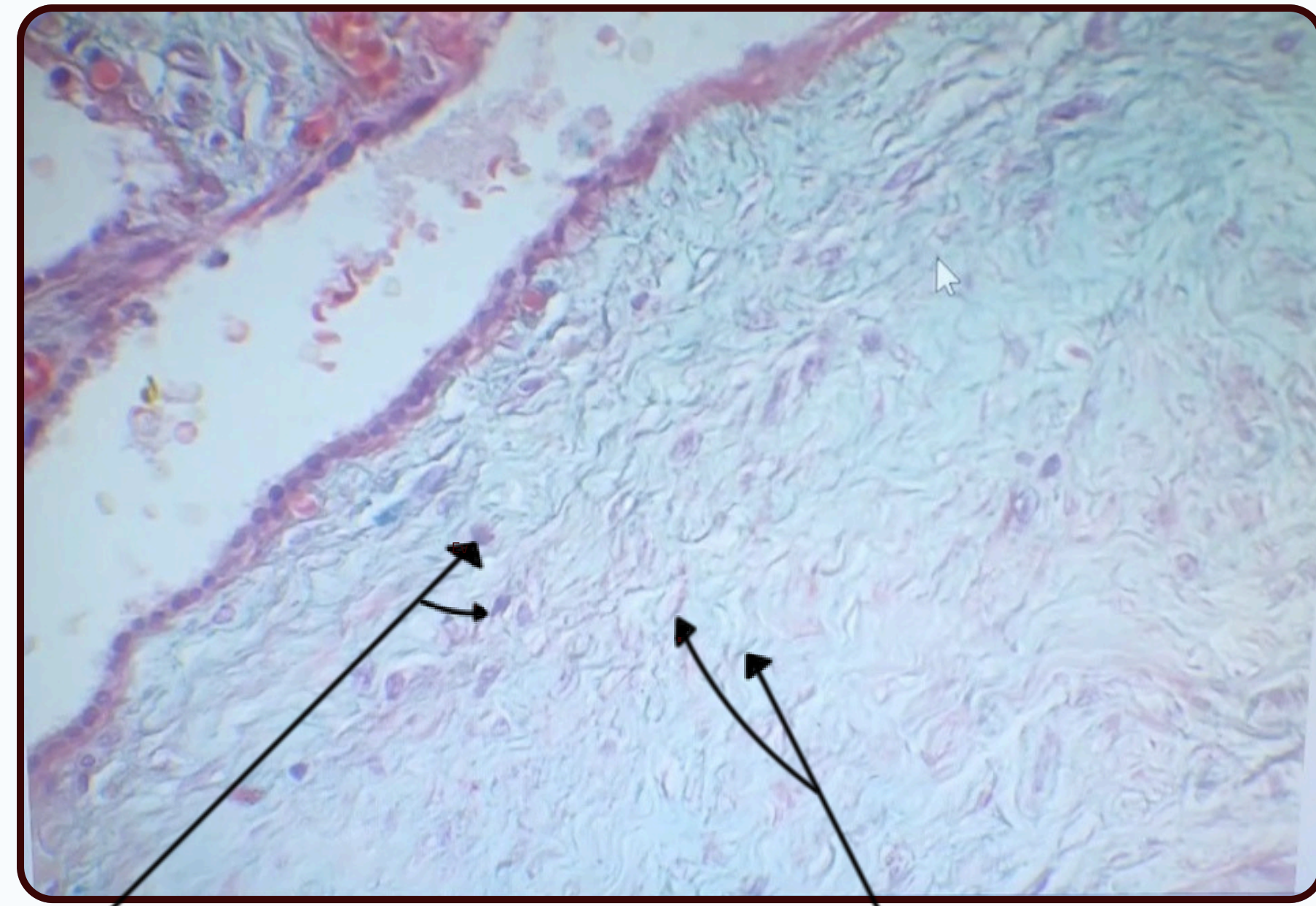
Continuous and dark
stain



Cytotrophoblast

discontinuous, light stain

THE HUMAN PLACENTA

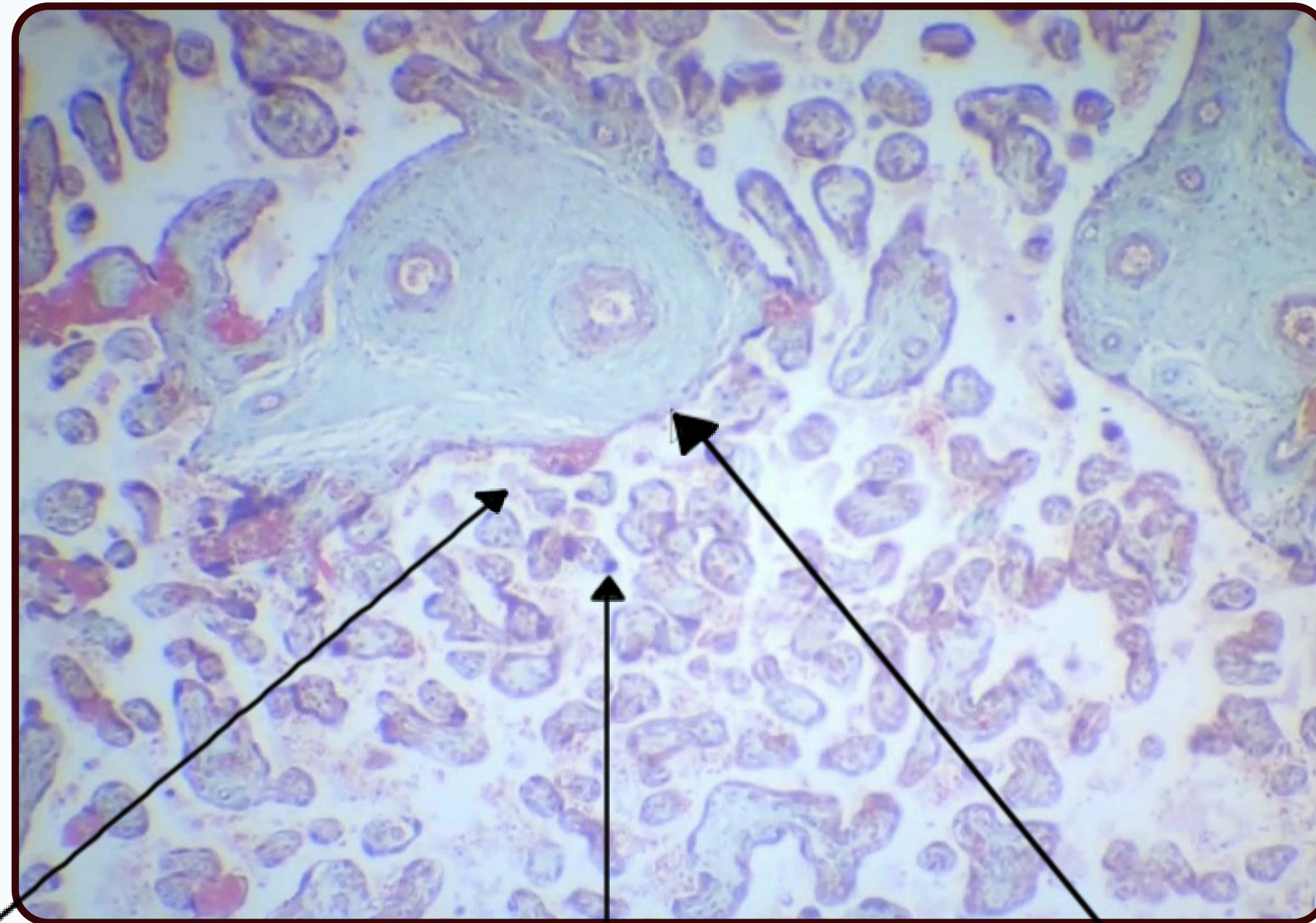


Microphage
Dark staining

Fusiform mesenchymal cells
Light staining



THE HUMAN PLACENTA



maternal blood vessels
in the intervillous space

Syncytial knot

Characteristic : pieces of syncytium break off
inside the intervillous spaces of the placenta

Syncytiotrophoblast

THE HUMAN PLACENTA



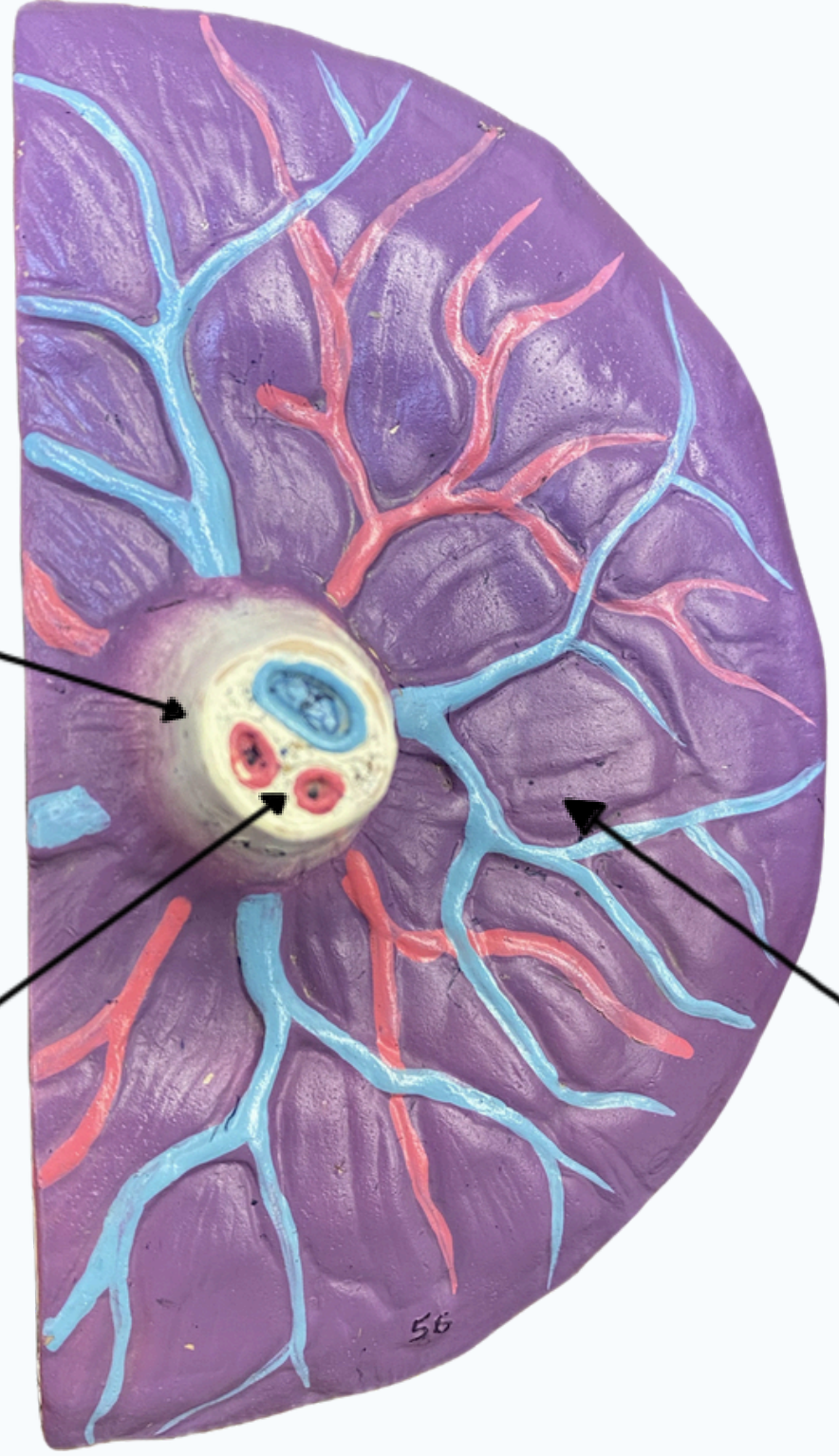
Fetal side

Umbilical cord

Characteristic : Consist of two arteries and one vein and between them Wharton's jelly

Wharton's jelly

Surround the two arteries and one vein Gelatinous connective tissue

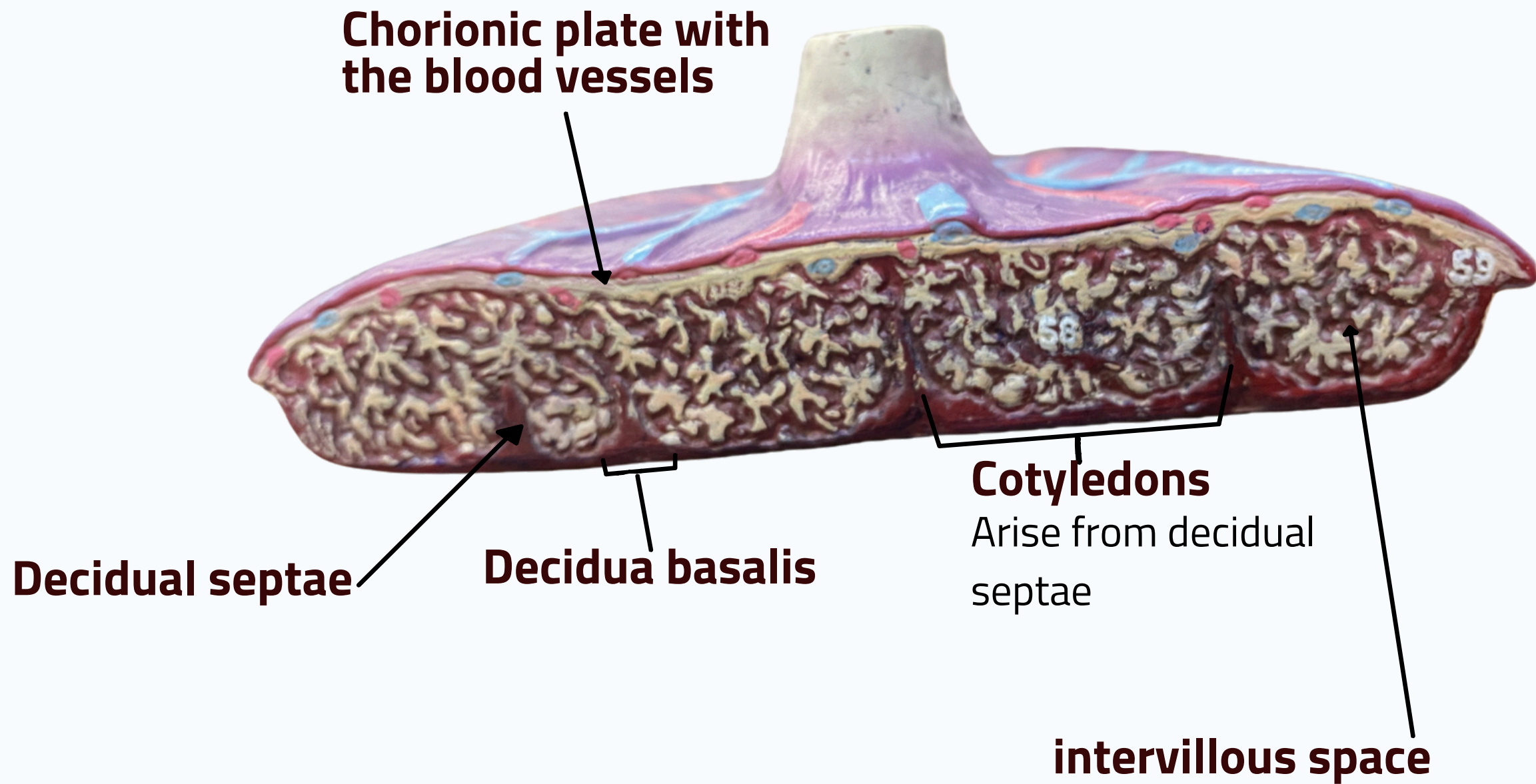


Chorionic plate with the blood vessels

THE HUMAN PLACENTA



Maternal side

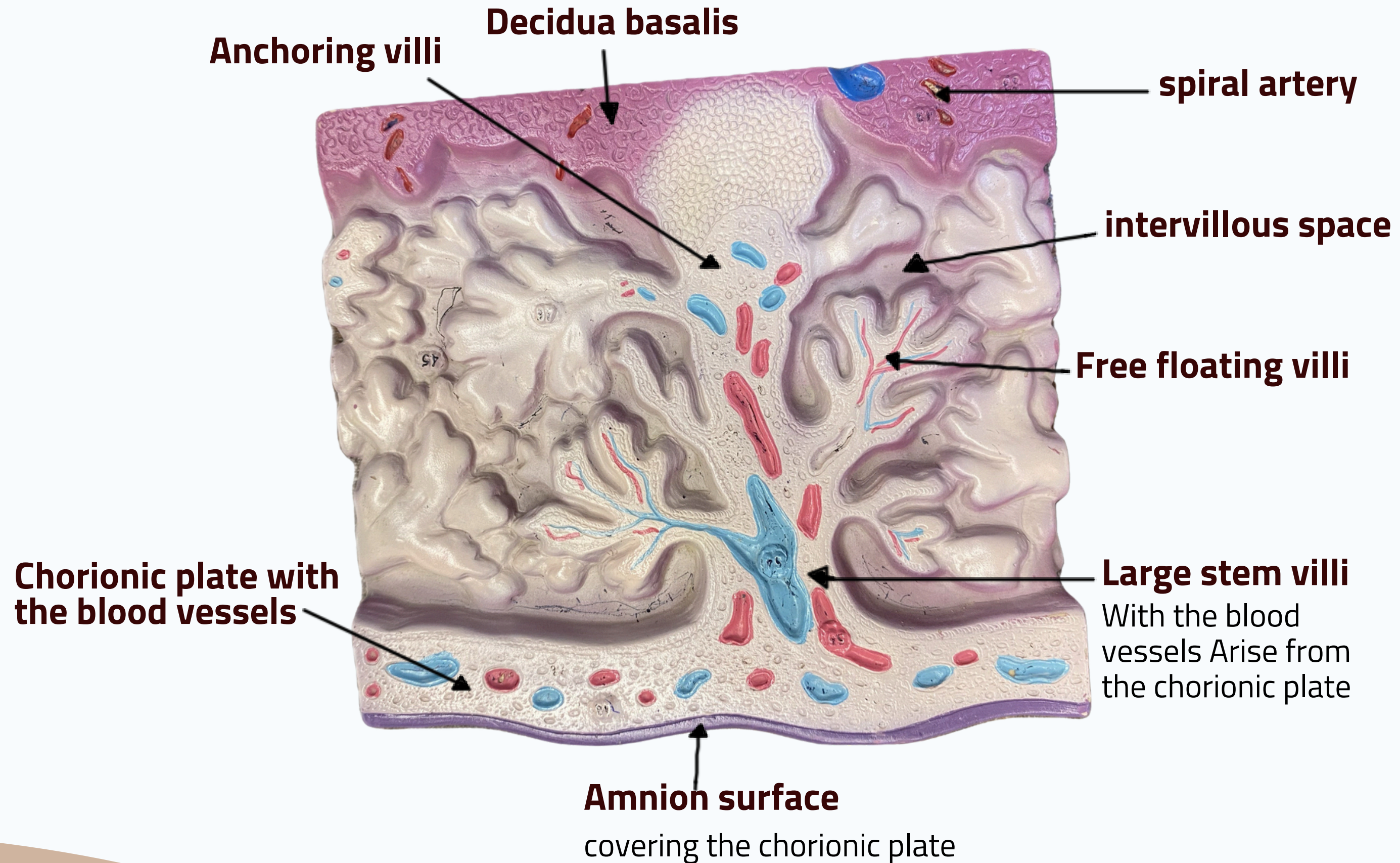




THE HUMAN PLACENTA



Cross-section of the placenta



THANK YOU

EDITED BY



SATURN
MEDIC



ARECH

© ALL COPYRIGHT ARE RESERVED FOR
SATURN MEDIC AND ARECH

WWW.SATURNMEDIC.COM