

EMBRYOLOGY PRACTICAL LECTURE - 8 - END OF THE THIRD WEEK

EDITED BY



SATURN
MEDIC

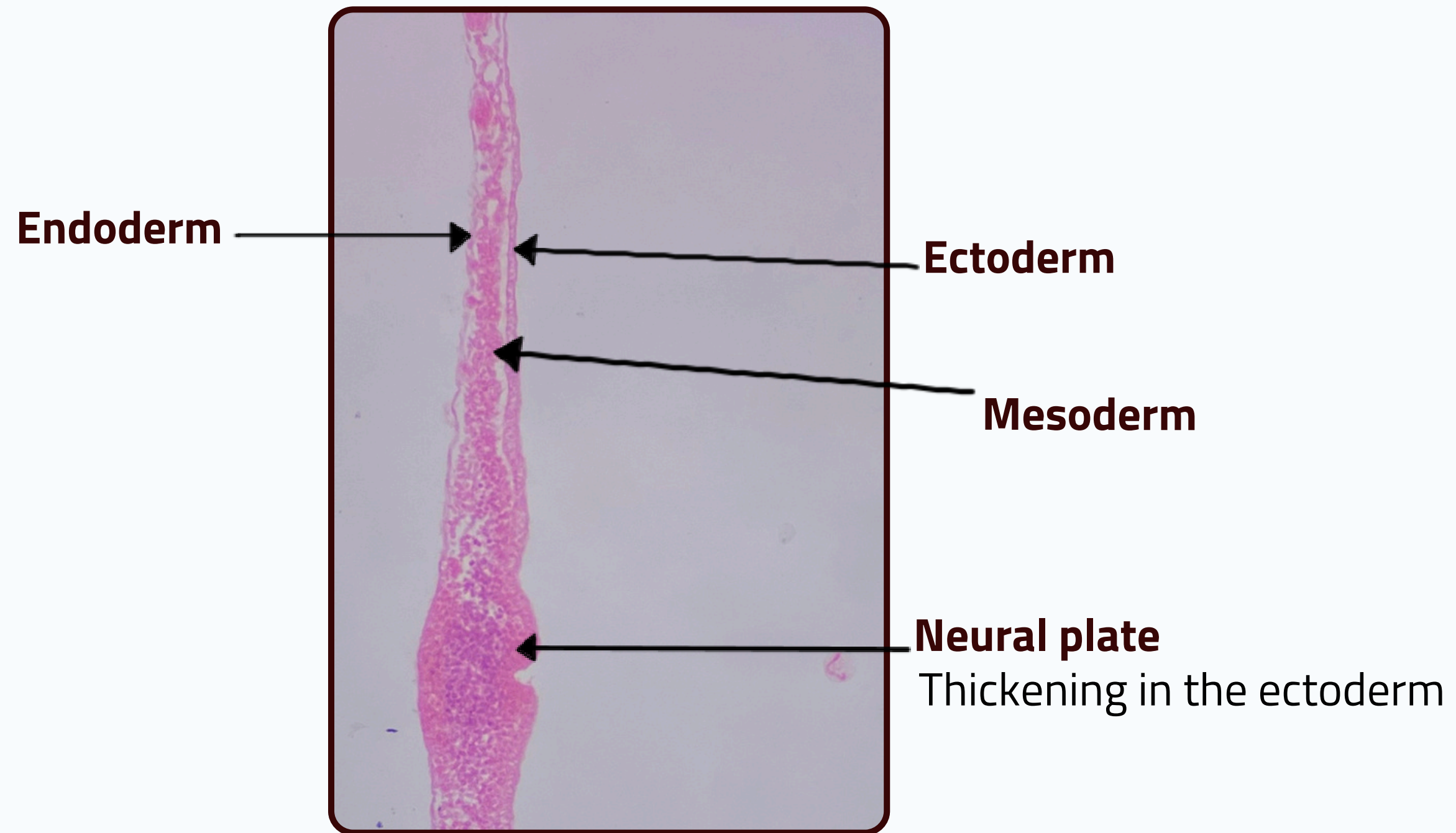


ARECH

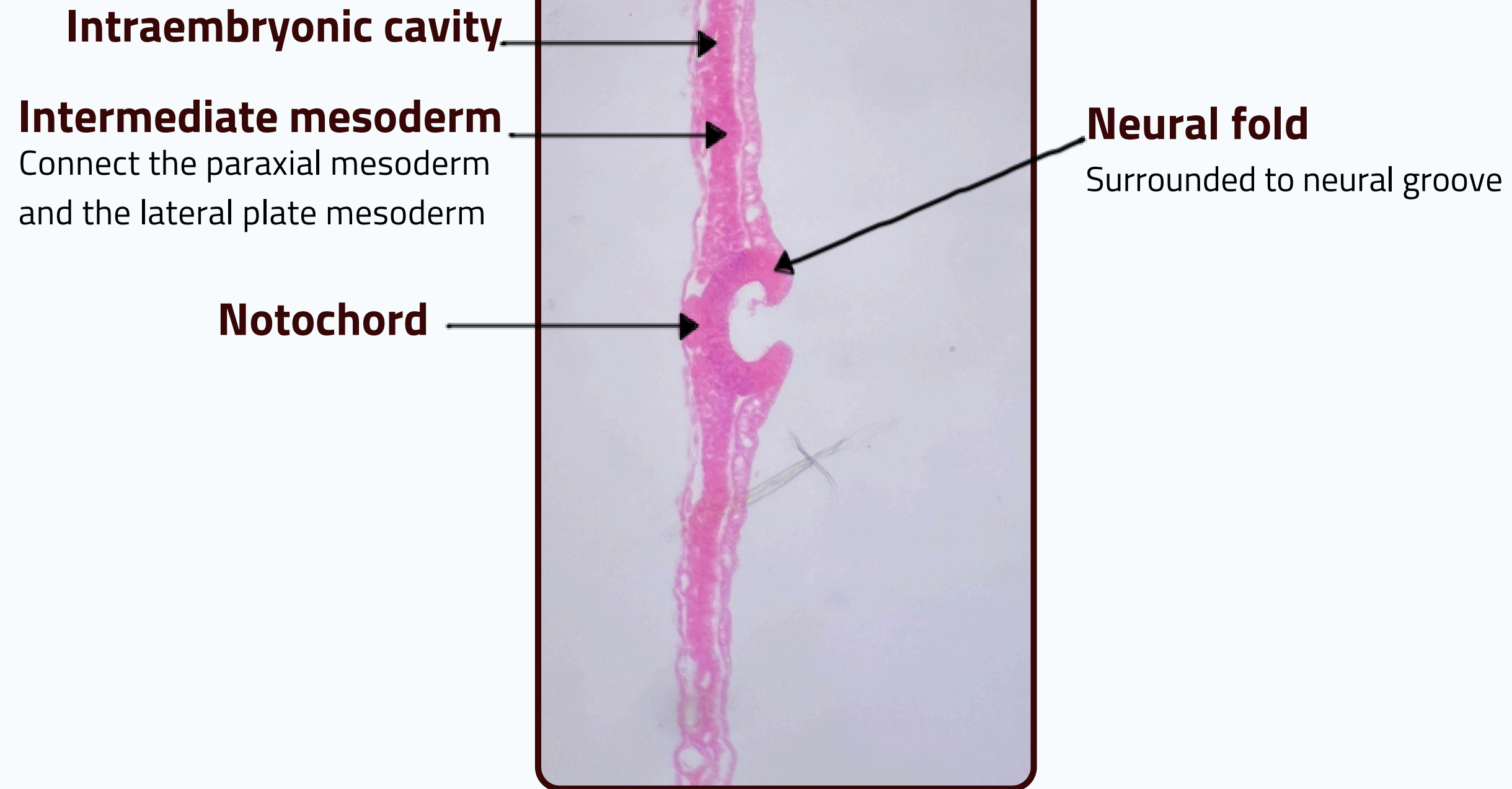
© ALL COPYRIGHT ARE RESERVED FOR
SATURN MEDIC AND ARECH

WWW.SATURNMEDIC.COM

END OF THE THIRD WEEK



END OF THE THIRD WEEK



END OF THE THIRD WEEK

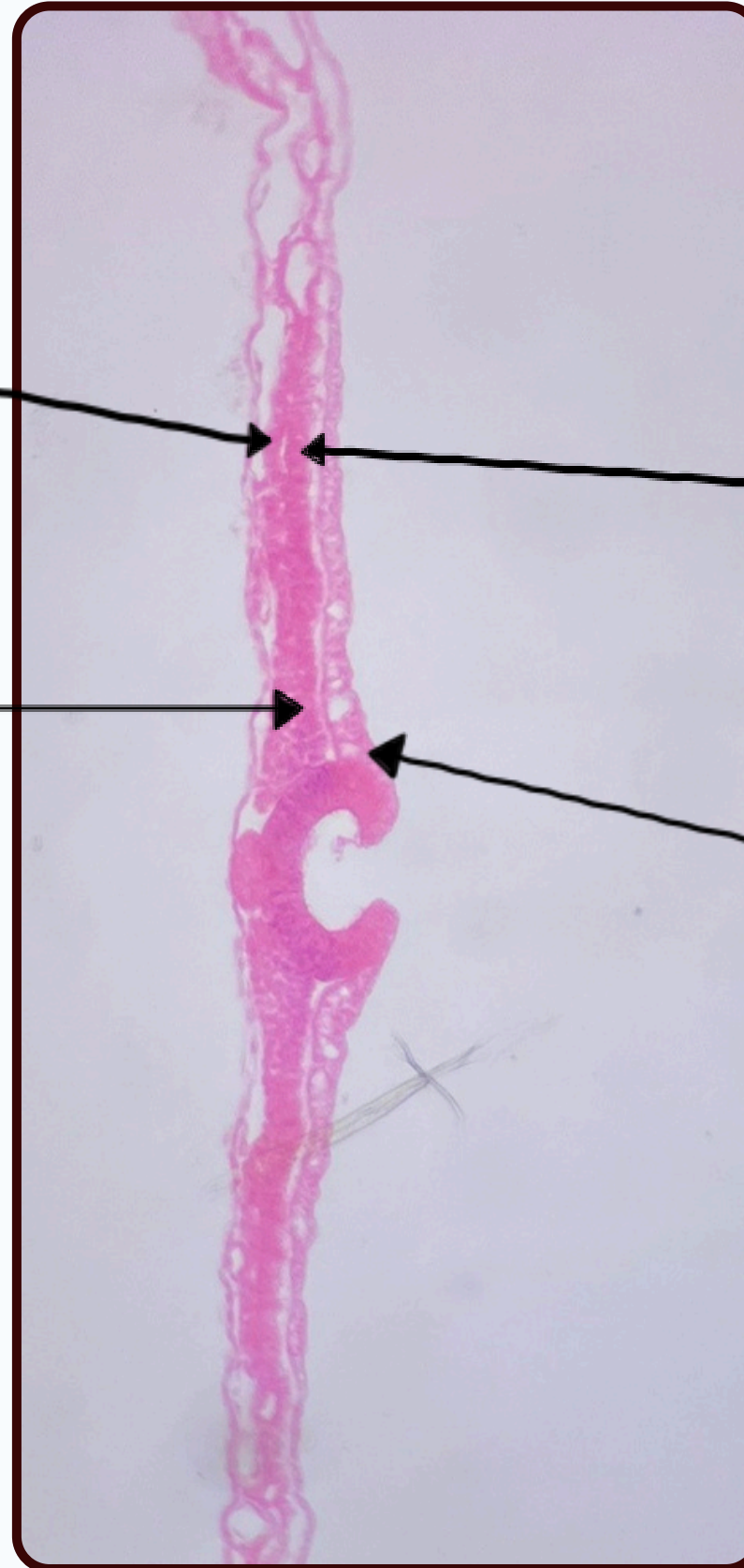


Splanchnic mesoderm (visceral mesoderm)

This layer is deeper and is adjacent to the endoderm

Paraxial mesoderm

surrounds the neural folds and notochord



Lateral plate mesoderm divides into two layers by the **intraembryonic cavity**

Somatic mesoderm (parietal layer)

This layer is more superficial and lies adjacent to the ectoderm

The neural crest

Cells derivative from ectoderm

END OF THE THIRD WEEK



Splanchnic mesoderm (visceral mesoderm)

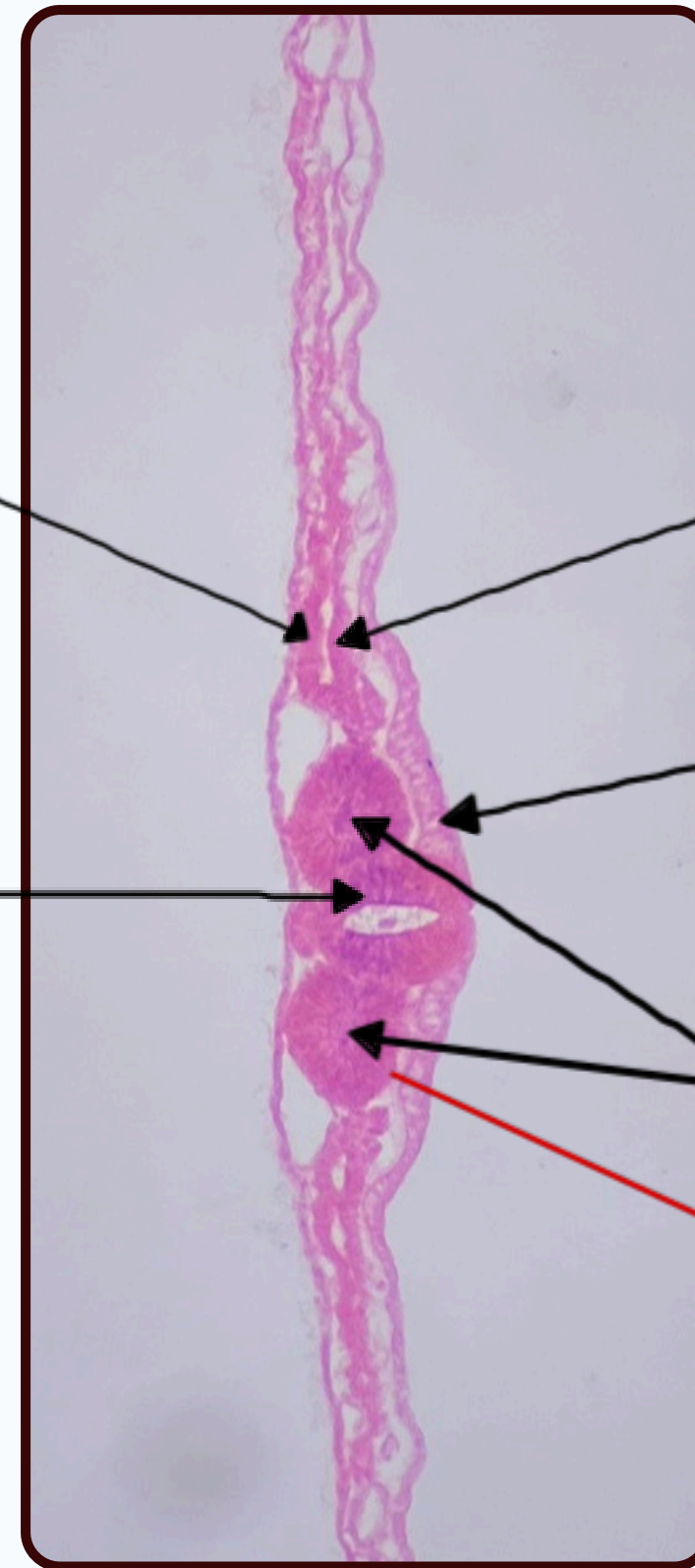
Somatic mesoderm (parietal layer)

Neural tube

The neural crest

Somitocele Cavity

Somite with somitocle



END OF THE THIRD WEEK



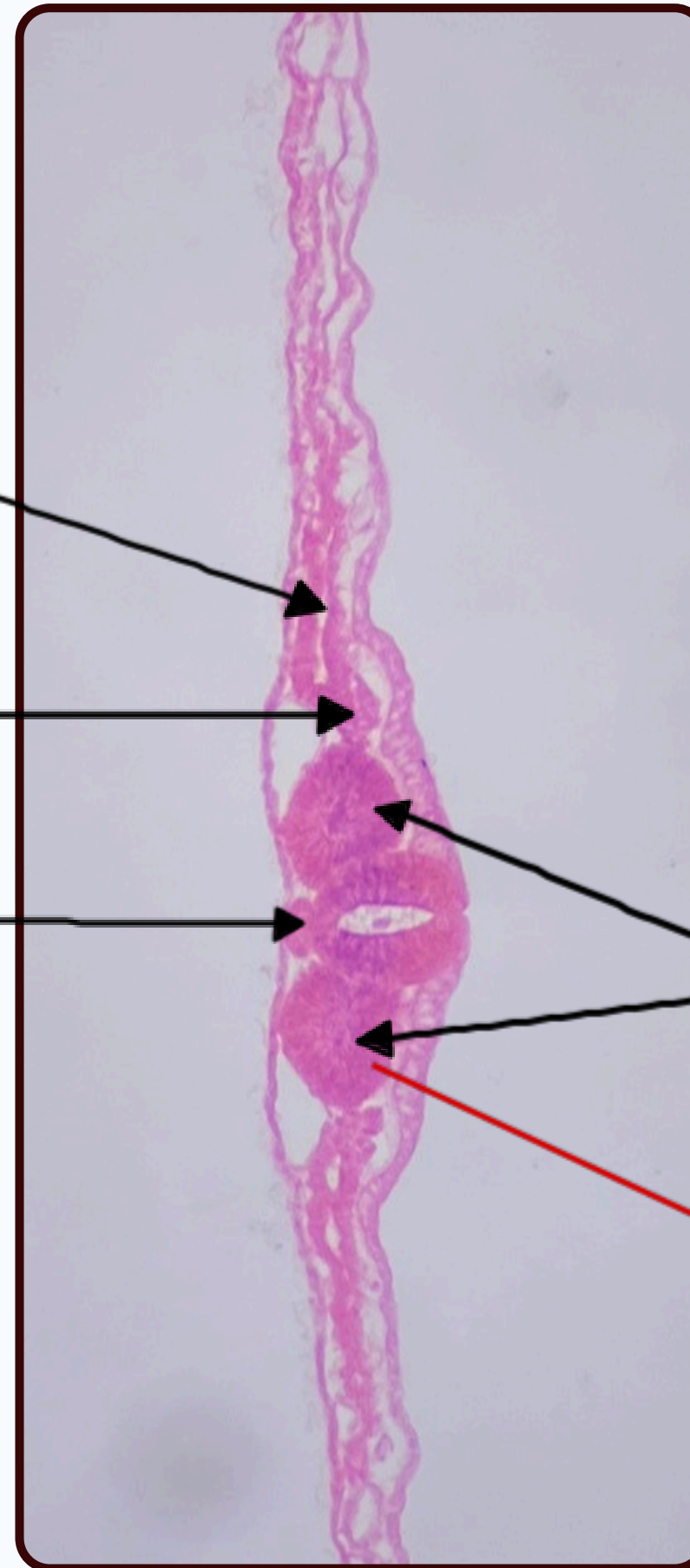
Intraembryonic cavity

Intermediate mesoderm

Notochord

Somite

Somite with somitocoele



THANK YOU

EDITED BY



SATURN
MEDIC



ARECH

© ALL COPYRIGHT ARE RESERVED FOR
SATURN MEDIC AND ARECH

WWW.SATURNMEDIC.COM