

# HISTOLOGY PRACTICAL LECTURE - 6 -

## BLOOD

EDITED BY



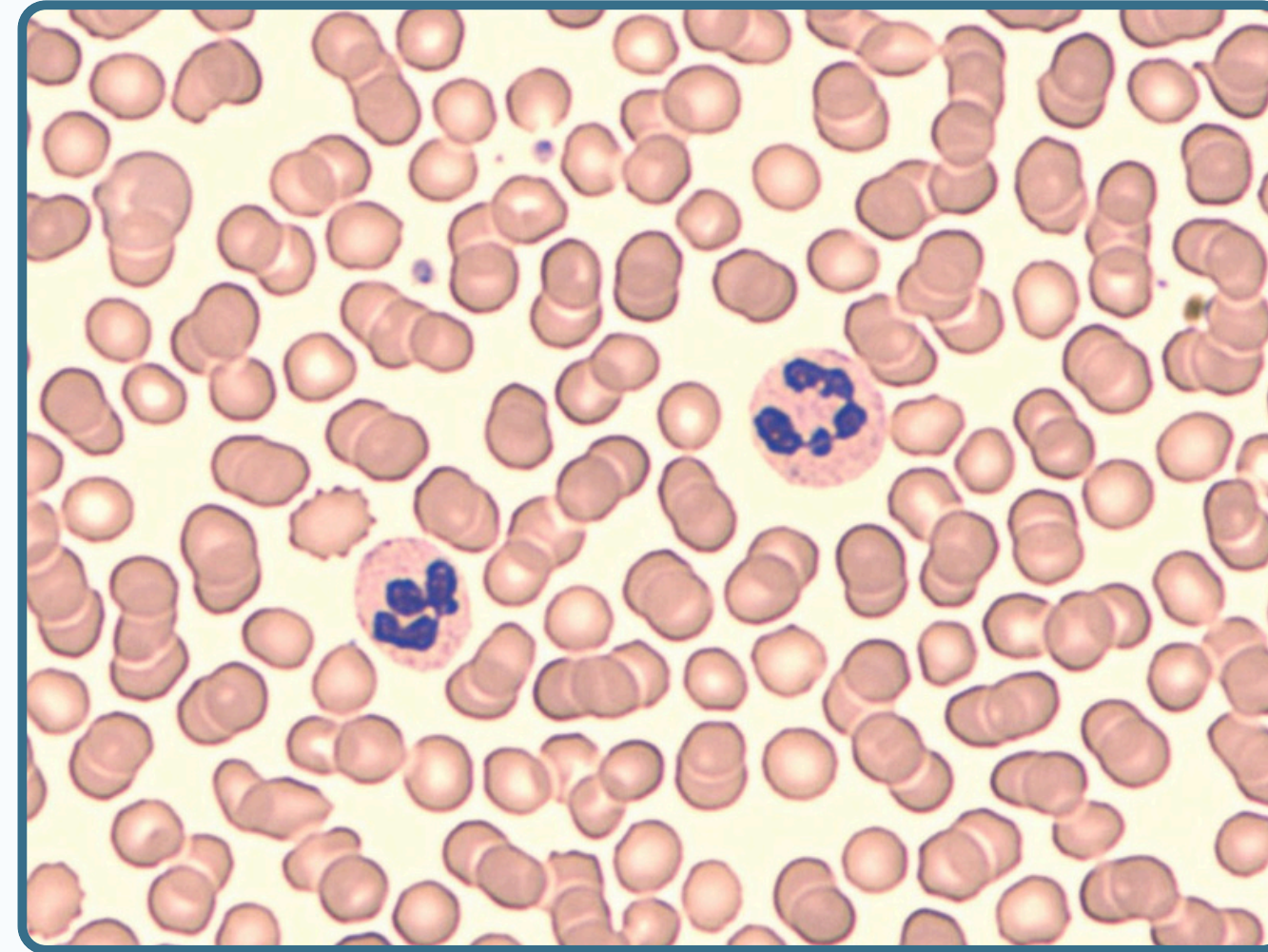
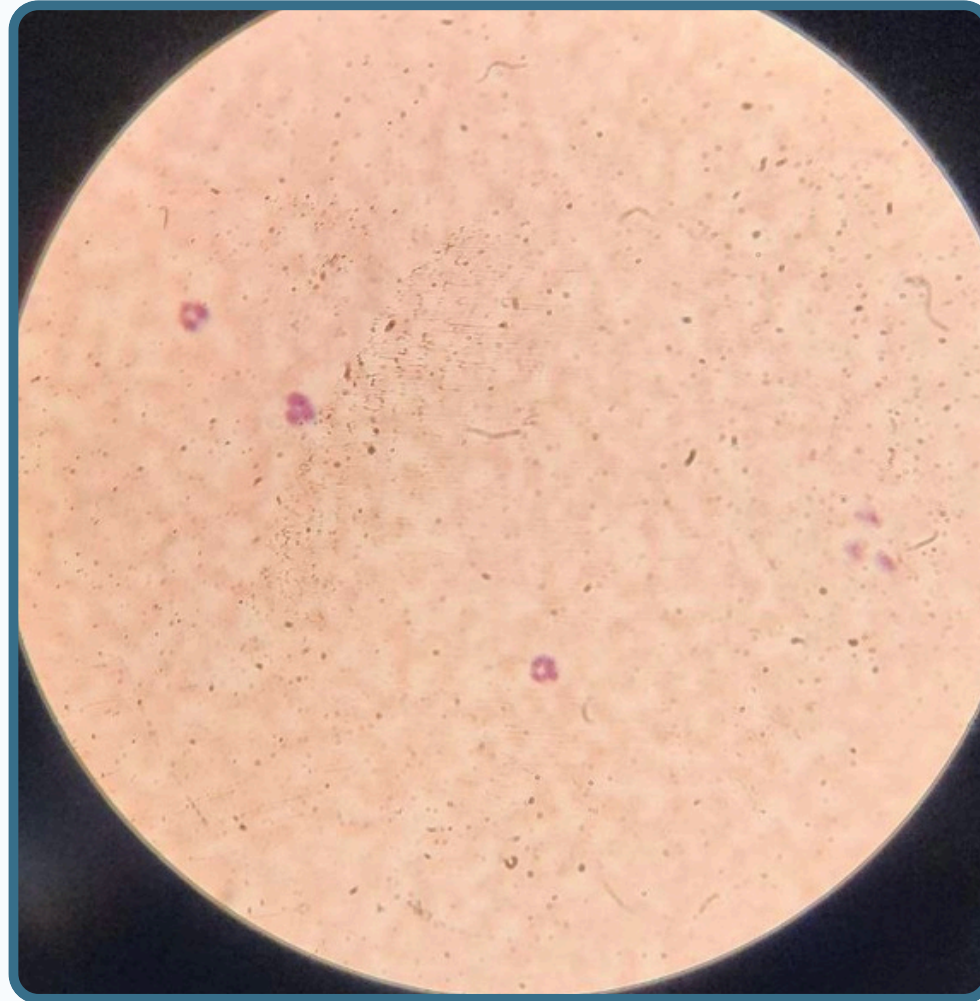
© ALL COPYRIGHT ARE RESERVED FOR  
ARECH AND SATURN MEDIC

[WWW.SATURNMEDIC.COM](http://WWW.SATURNMEDIC.COM)





## Neutrophil

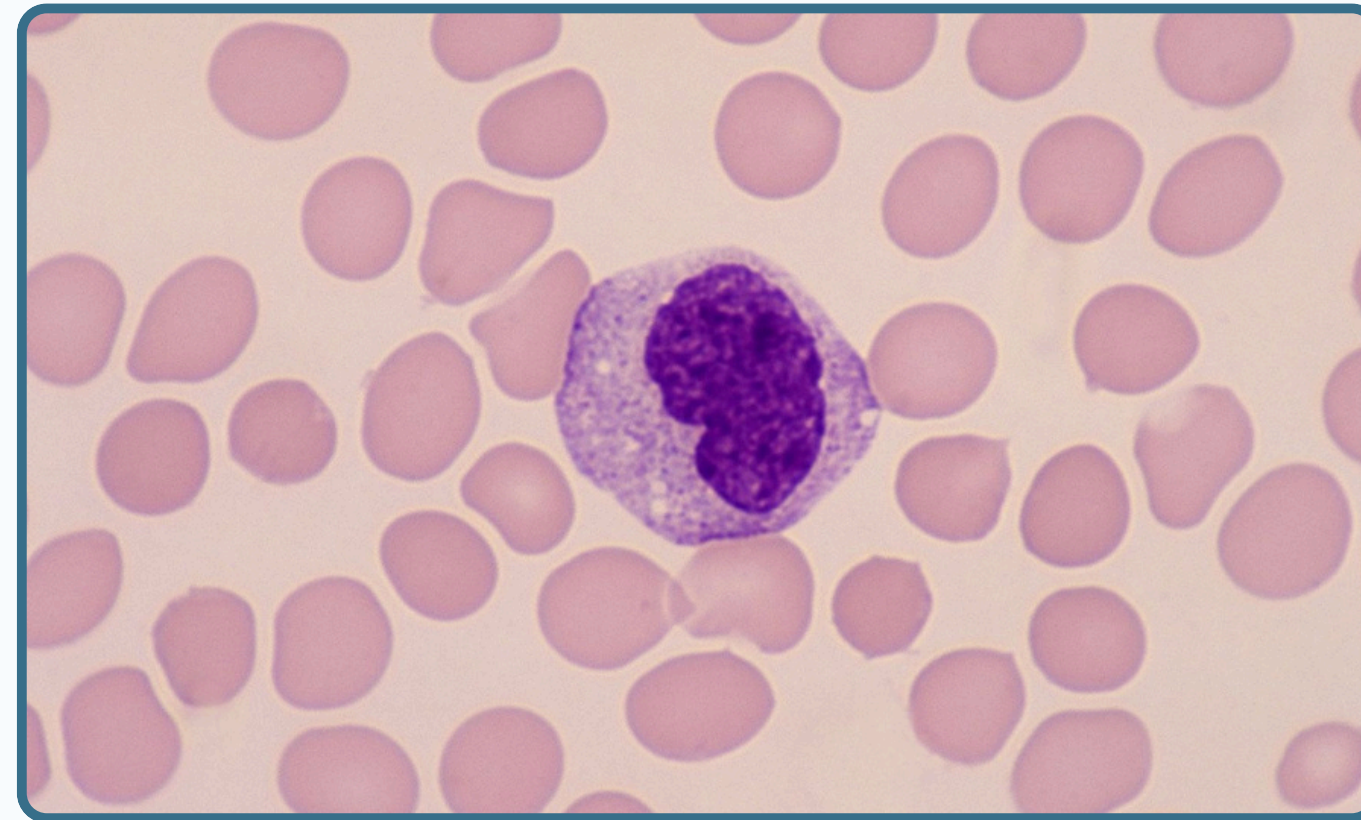


- wright stain
- peripheral blood
- lobulated nucleus connected with the thread of chromosome
- fine granules in cytoplasm





## Monocyte



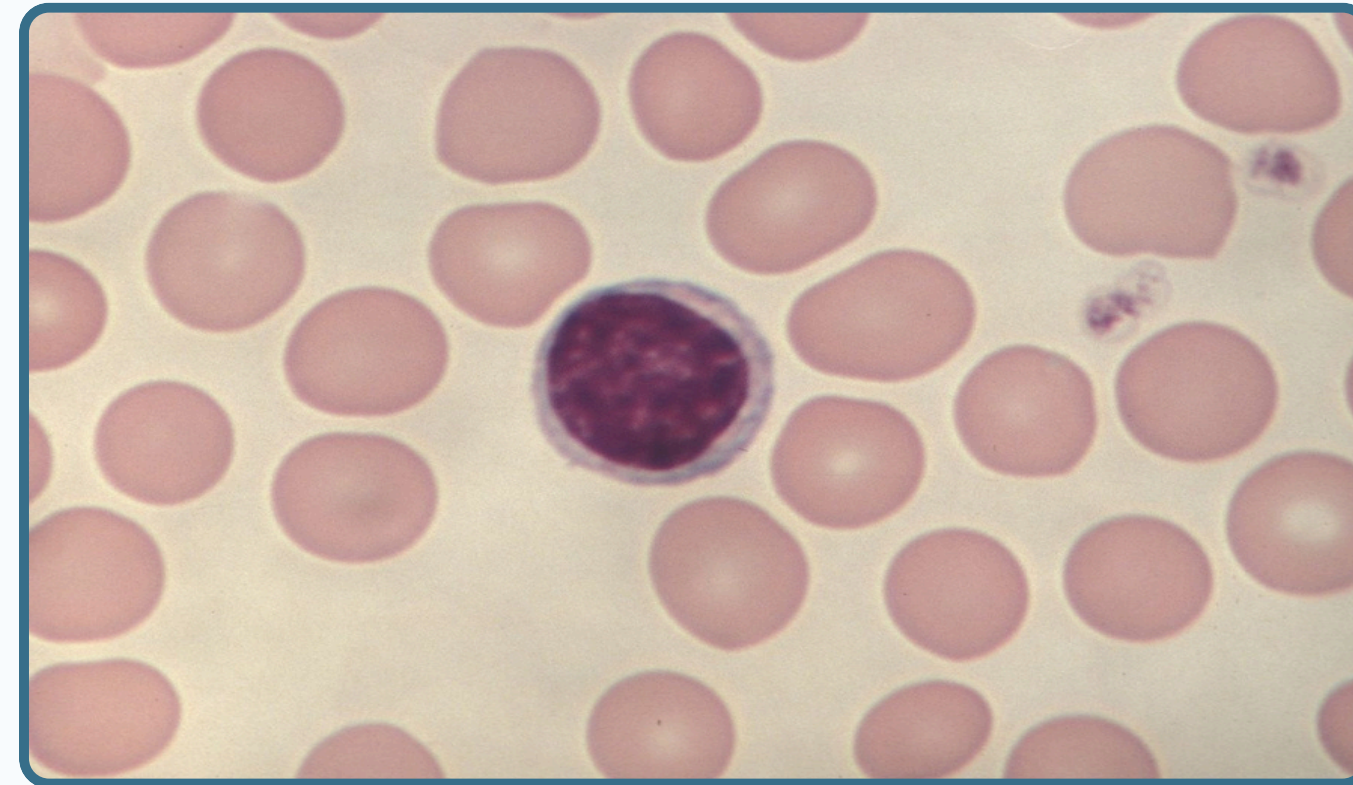
- Wright stain
- peripheral blood
- Kidney shape nucleus
- fine azurophilic in cytoplasm



# BLOOD



## lymphocyte

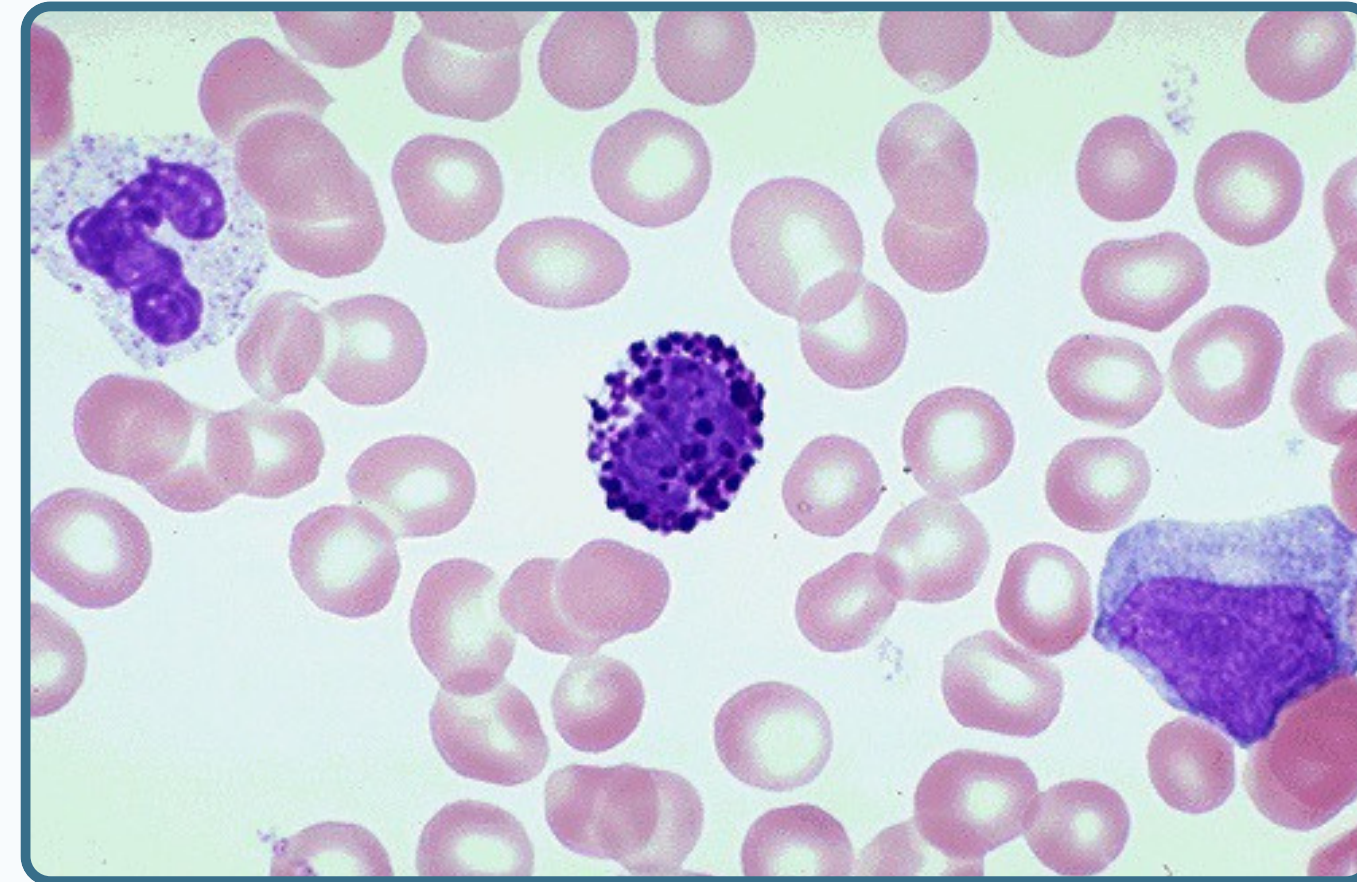


- Wright stain
- Peripheral blood film
- large dense nucleus basophilic





## Basophil

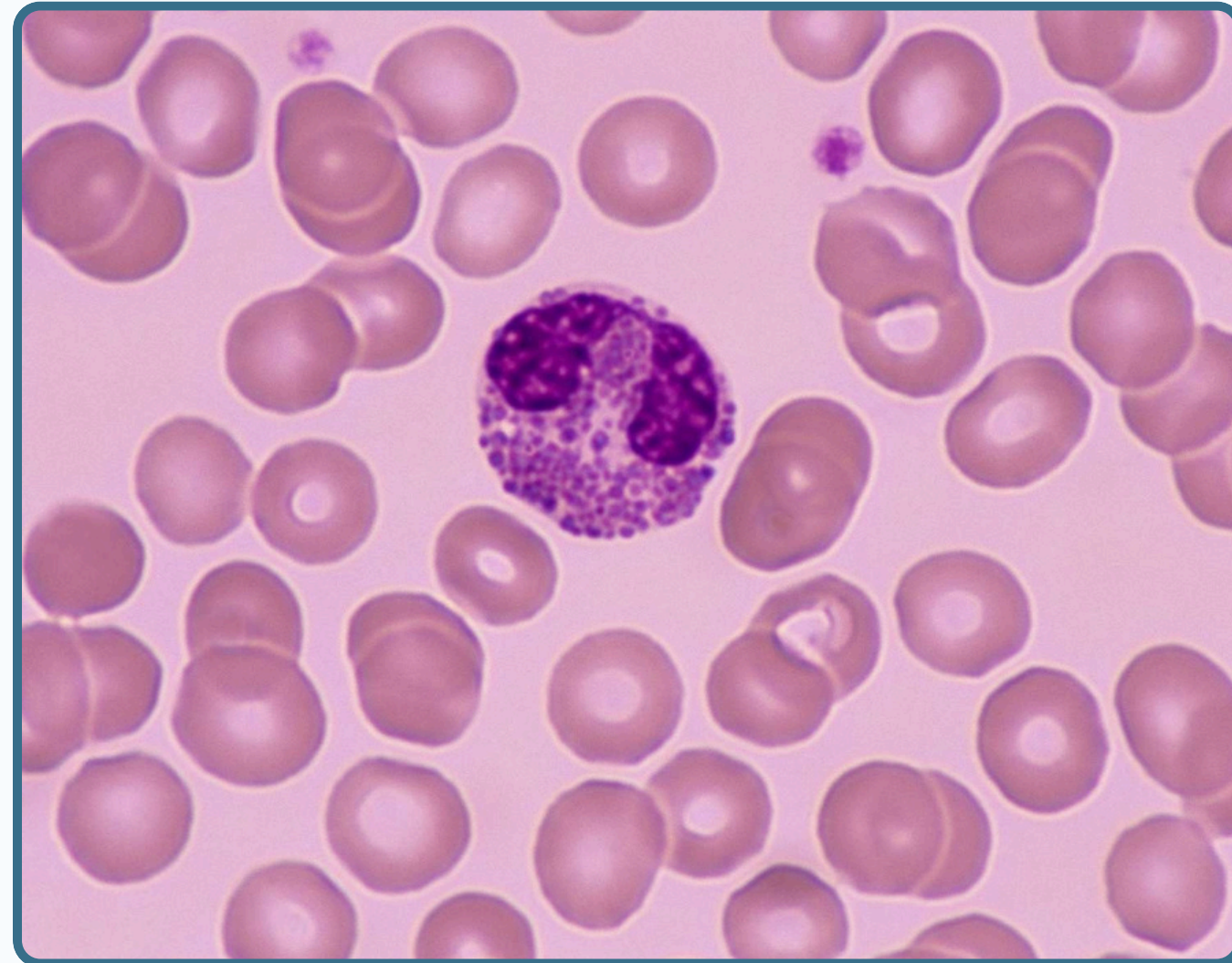
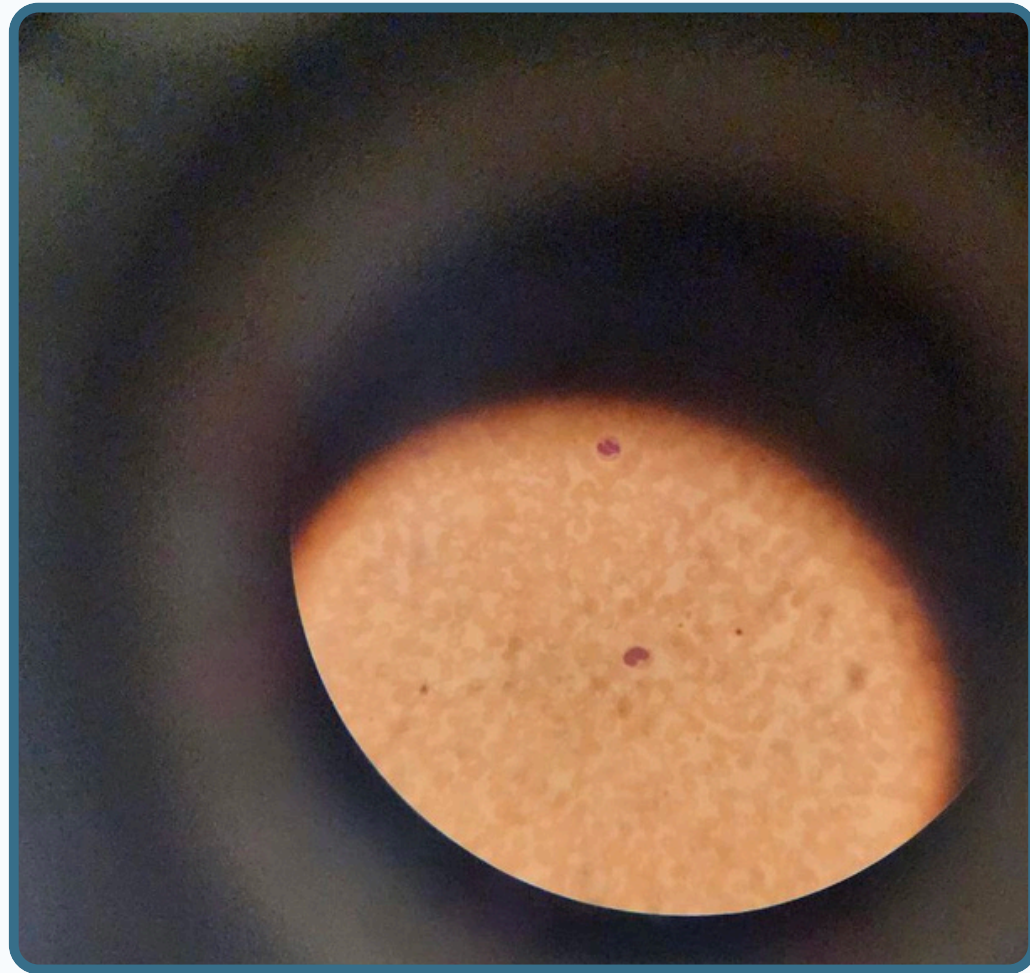


- Granular cytoplasm
- Nucleus irregular or s shaped
- obscured the cytoplasmic granules
- Small in percentage less than 1% in peripheral blood.
- wright stain





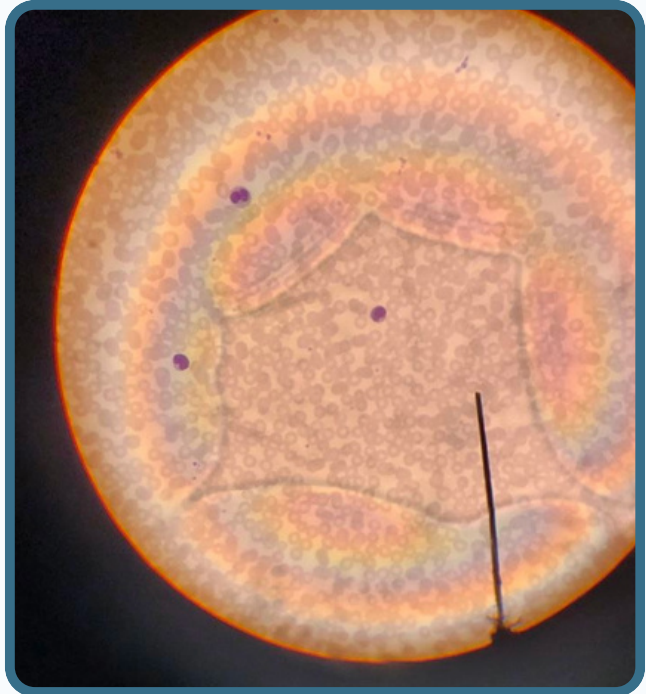
## Eosinophil



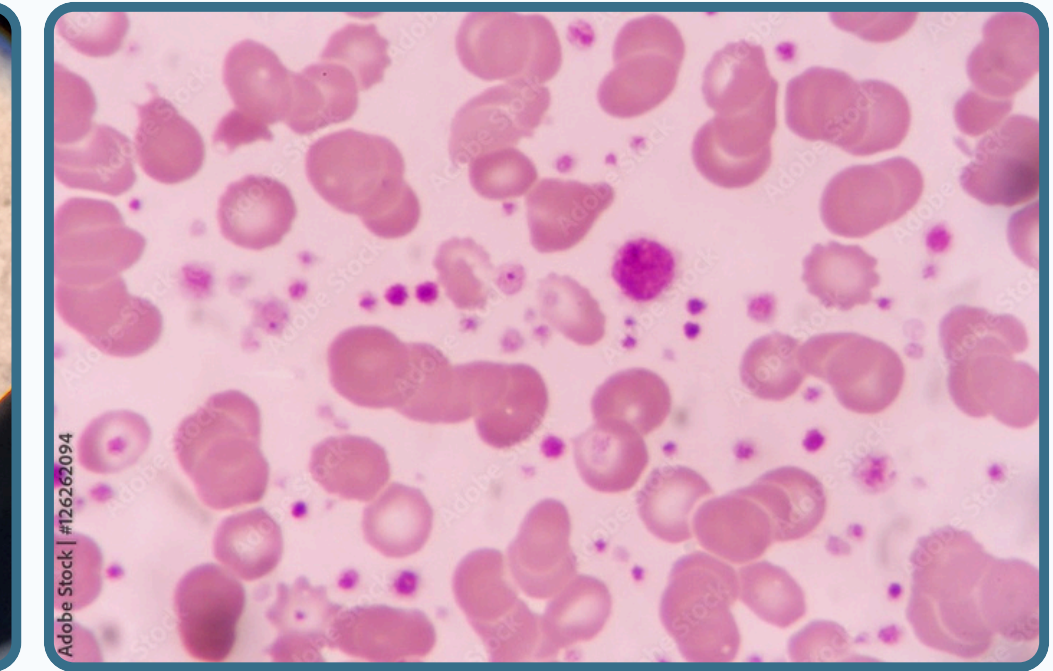
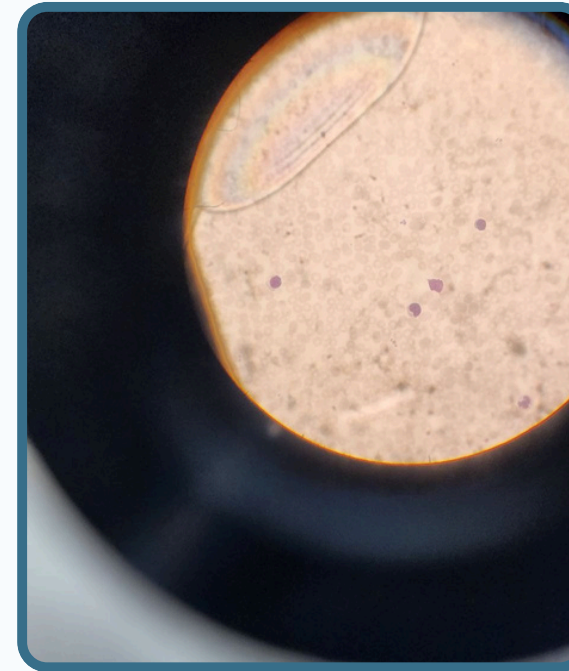
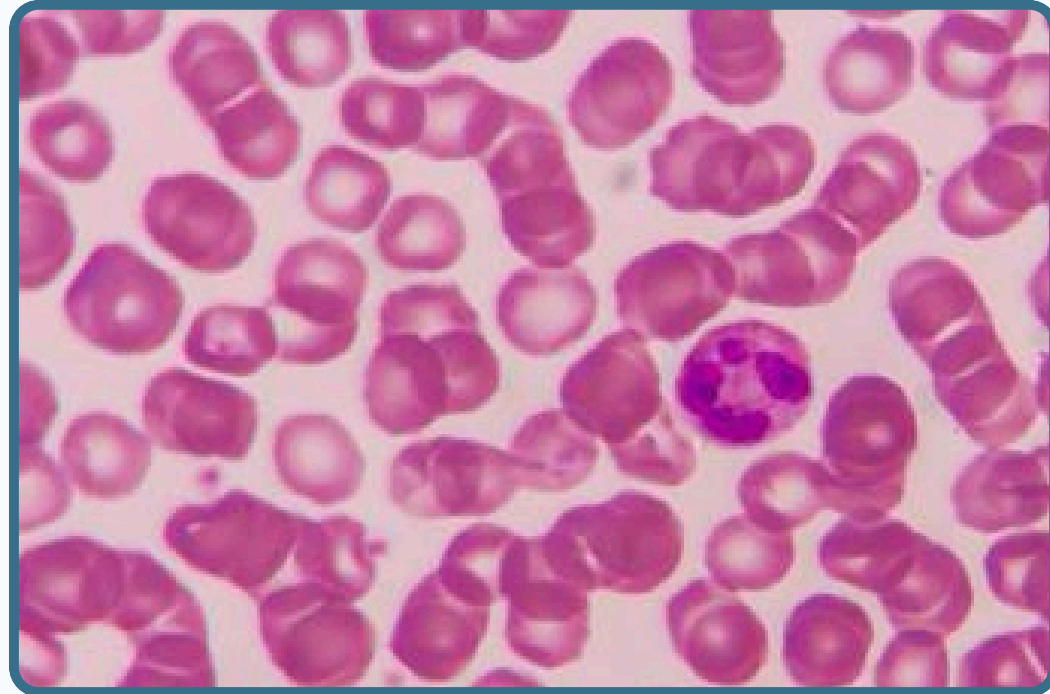
- Wright stain
- Peripheral blood film
- Granulated cytoplasm with large acidophilic refractile granules
- Characteristic bilobed nucleus.



# BLOOD



**Red blood cell**



**Platelets**



# THANK YOU

EDITED BY



© ALL COPYRIGHT ARE RESERVED FOR  
ARECH AND SATURN MEDIC

[WWW.SATURNMEDIC.COM](http://WWW.SATURNMEDIC.COM)