

HISTOLOGY PRACTICAL LECTURE - 4 -

CARTILAGE

EDITED BY



© ALL COPYRIGHT ARE RESERVED FOR
ARECH AND SATURN MEDIC

WWW.SATURNMEDIC.COM

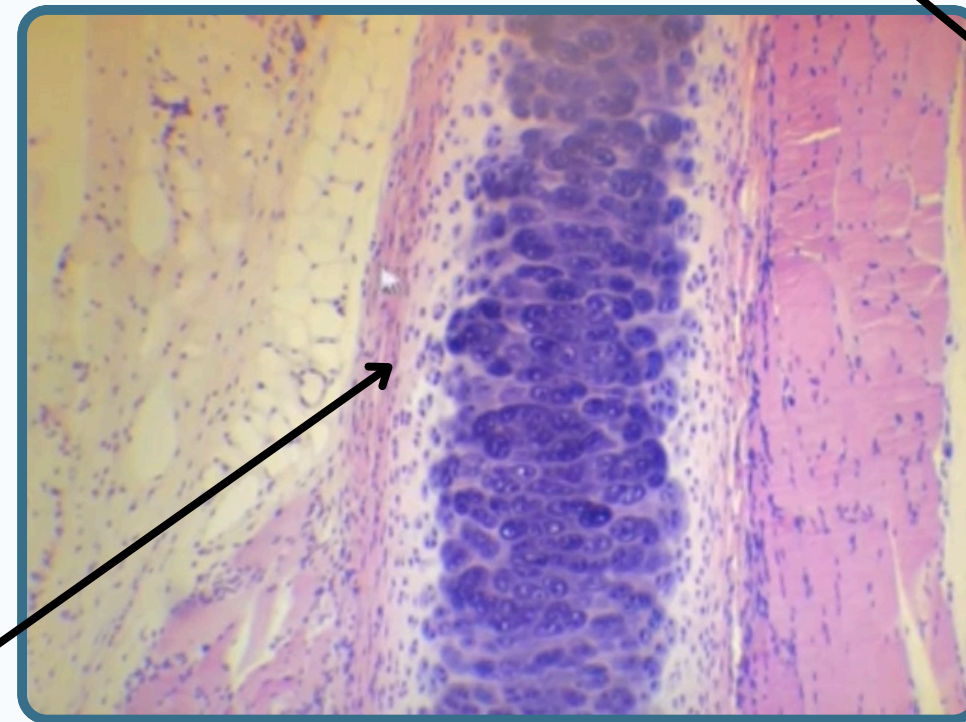


CARTILAGE



Hyaline Cartilage

Perichondrium



Perichondrium

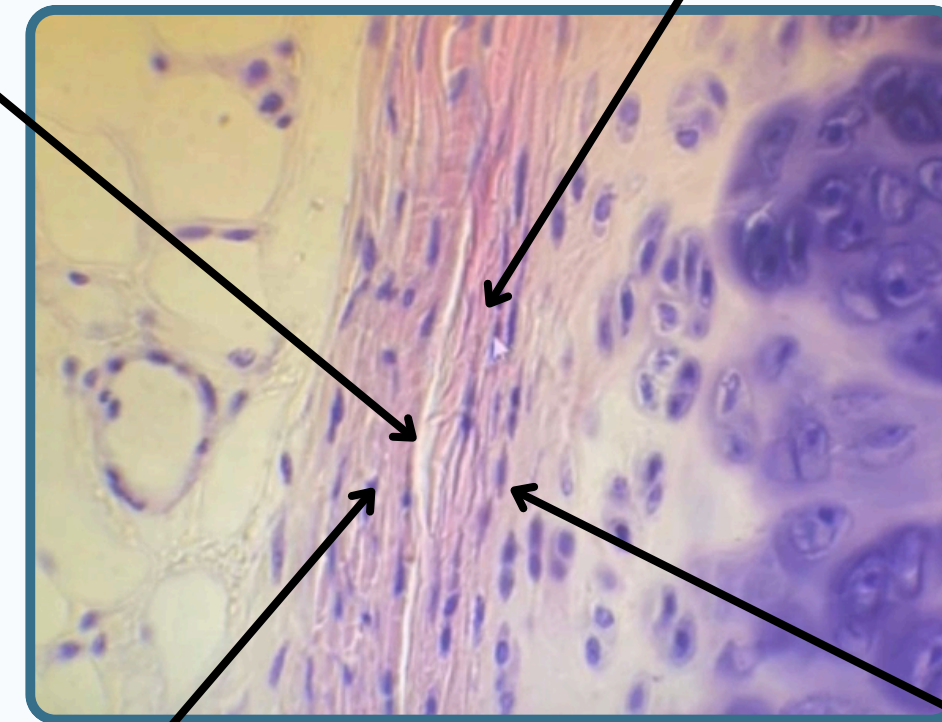
Sheath of dense connective tissue consist of two layers (outer layer consist of collagen fibers and fibroblast)

Outer Layer

with the collagen fibers and fibroblast

Inner Layer

with progenitor cells for chondroblast That divide and differentiate to chondrocyte



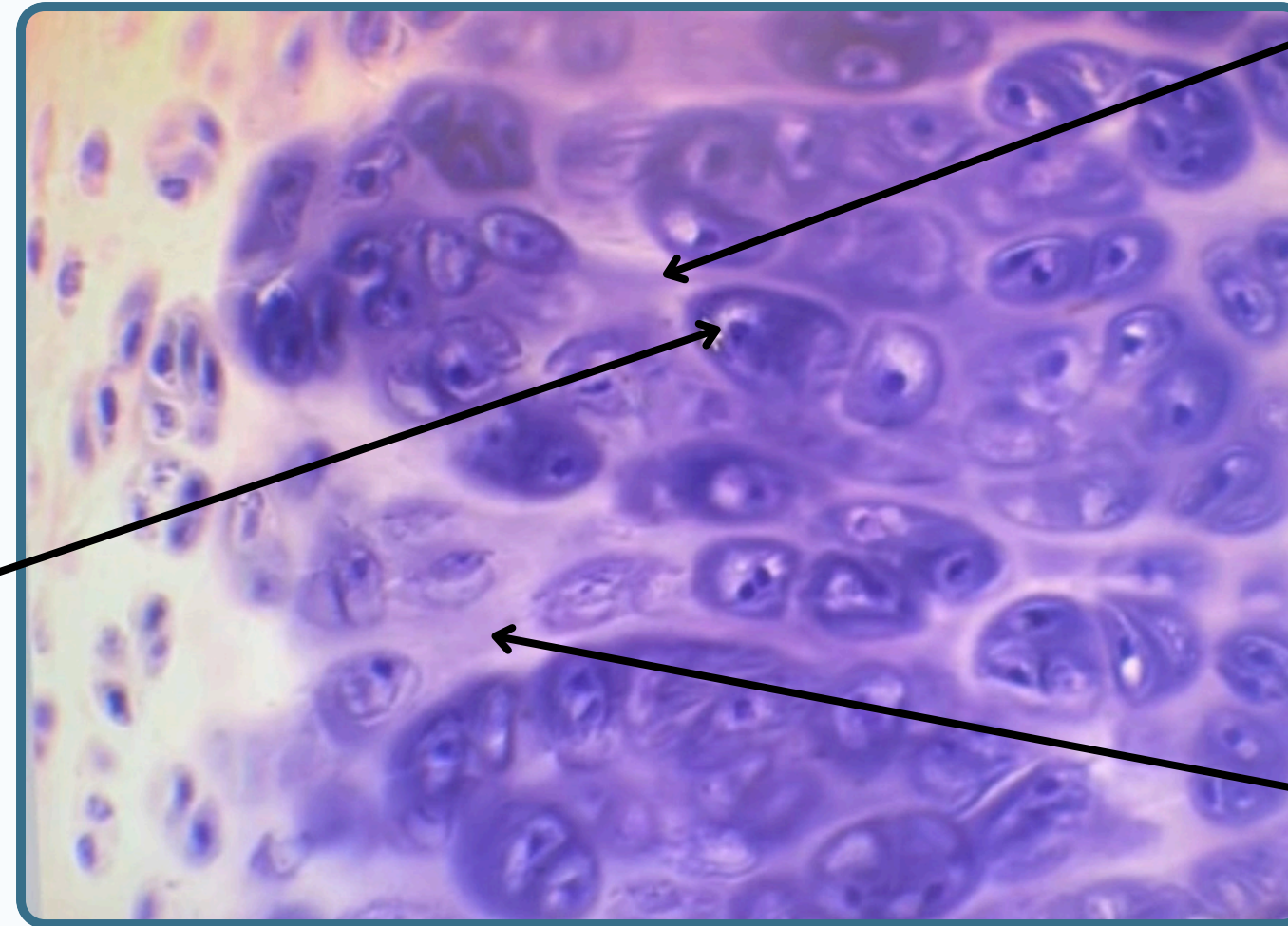
Chondroblast

Has an elastic shape found in the peripheral of the hyaline cartilage



CARTILAGE

Hyaline Cartilage



Territorial matrix

Inner territorial Matrix

Chondrocyte

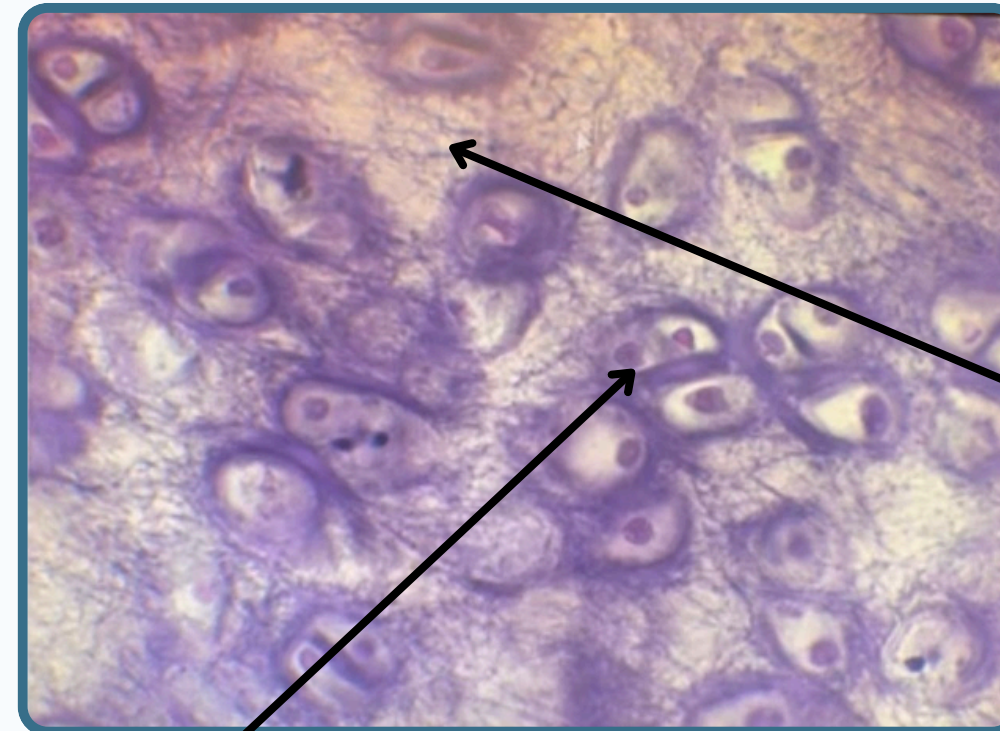
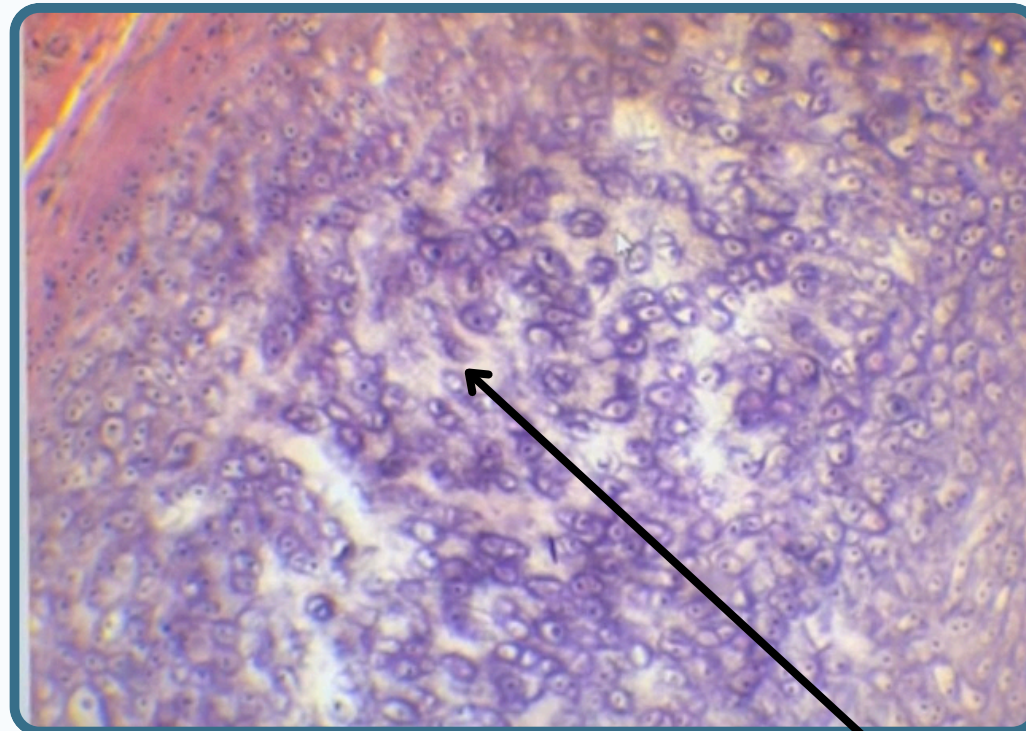
they are rounded or in groups of up to eight cells called isogenous group
These found either single* or isogenous group*



CARTILAGE



Elastic Cartilage



Elastic Fibers

Chondrocyte

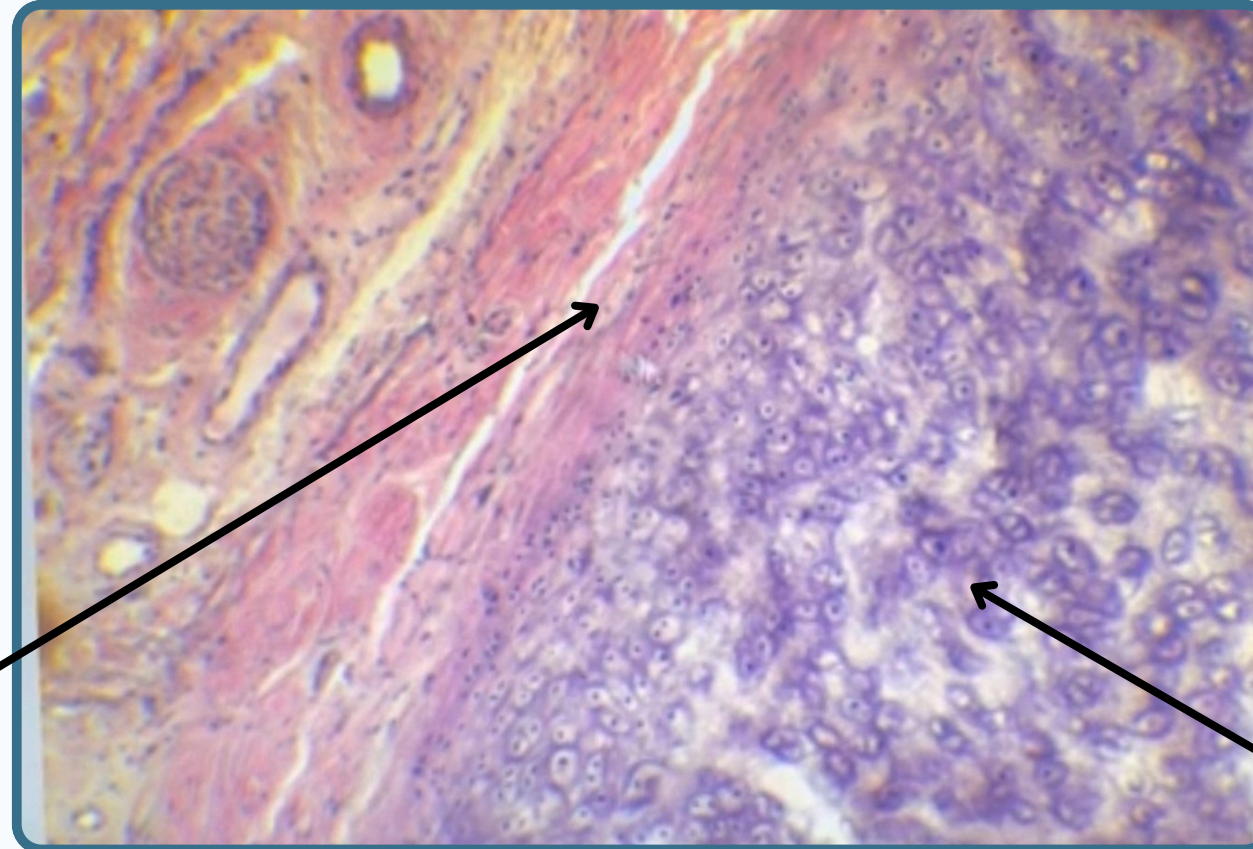
Found singly or in isogenous group



CARTILAGE



Elastic Cartilage



Perichondrium

consist of collagen fibers (that will be type one while collagen found in matrix will be type two) and fibroblast

Elastic cartilage with chondrocyte



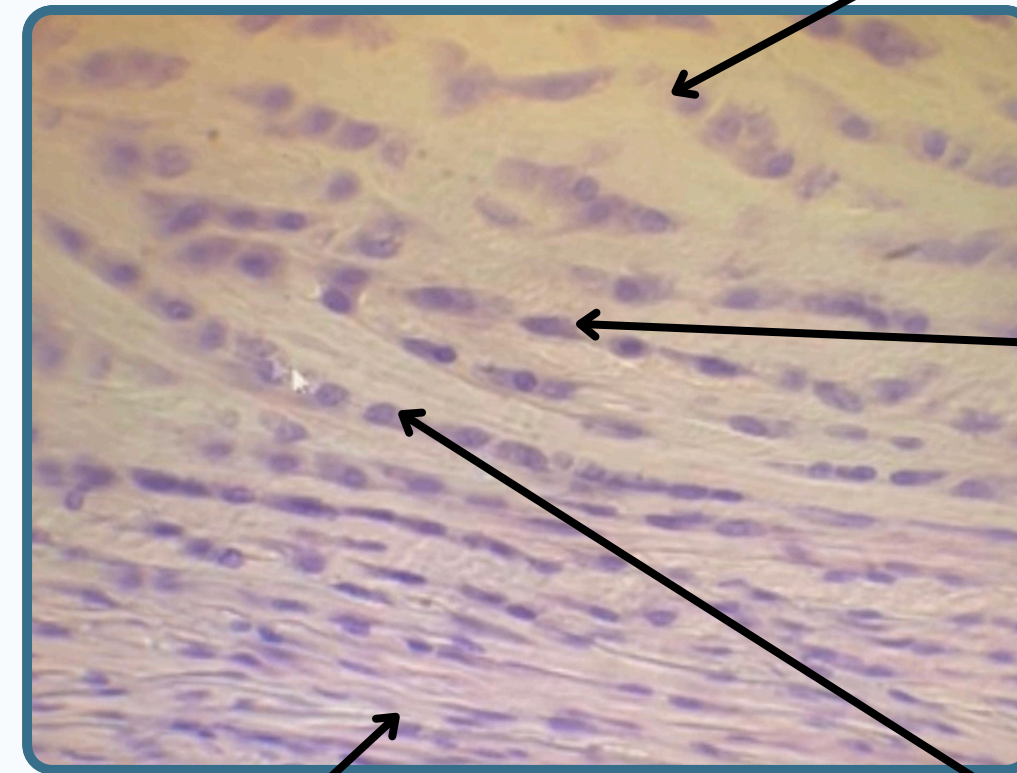
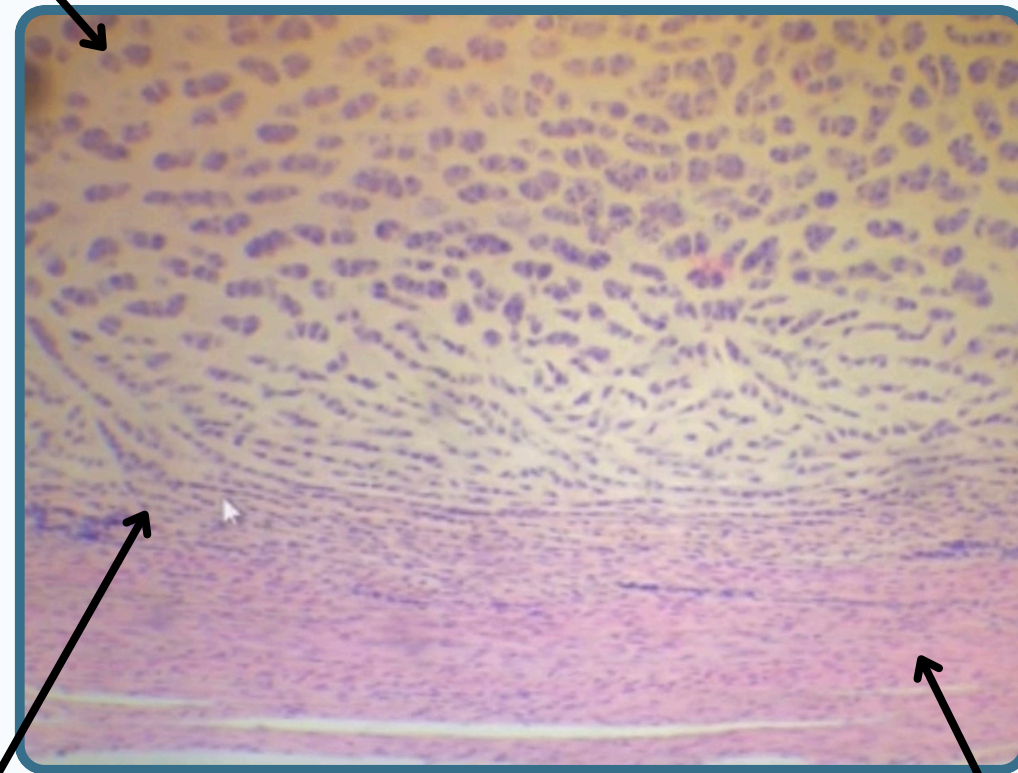
CARTILAGE



Fibrocartilage

Hyaline cartilage

Hyaline cartilage



Type one collagen fibers

Fibrocartilage

Dense Connective Tissue

Fibroblast
Arranged in rows

All Slides Are Stained By Hematoxylin and Eosin

THANK YOU

EDITED BY



© ALL COPYRIGHT ARE RESERVED FOR
ARECH AND SATURN MEDIC

WWW.SATURNMEDIC.COM