

# HISTOLOGY PRACTICAL LECTURE - 17 -

## ENDOCRINE GLANDS

EDITED BY



© ALL COPYRIGHT ARE RESERVED FOR  
ARECH AND SATURN MEDIC

[WWW.SATURNMEDIC.COM](http://WWW.SATURNMEDIC.COM)

# ENDOCRINE GLANDS



## Pituitary Gland

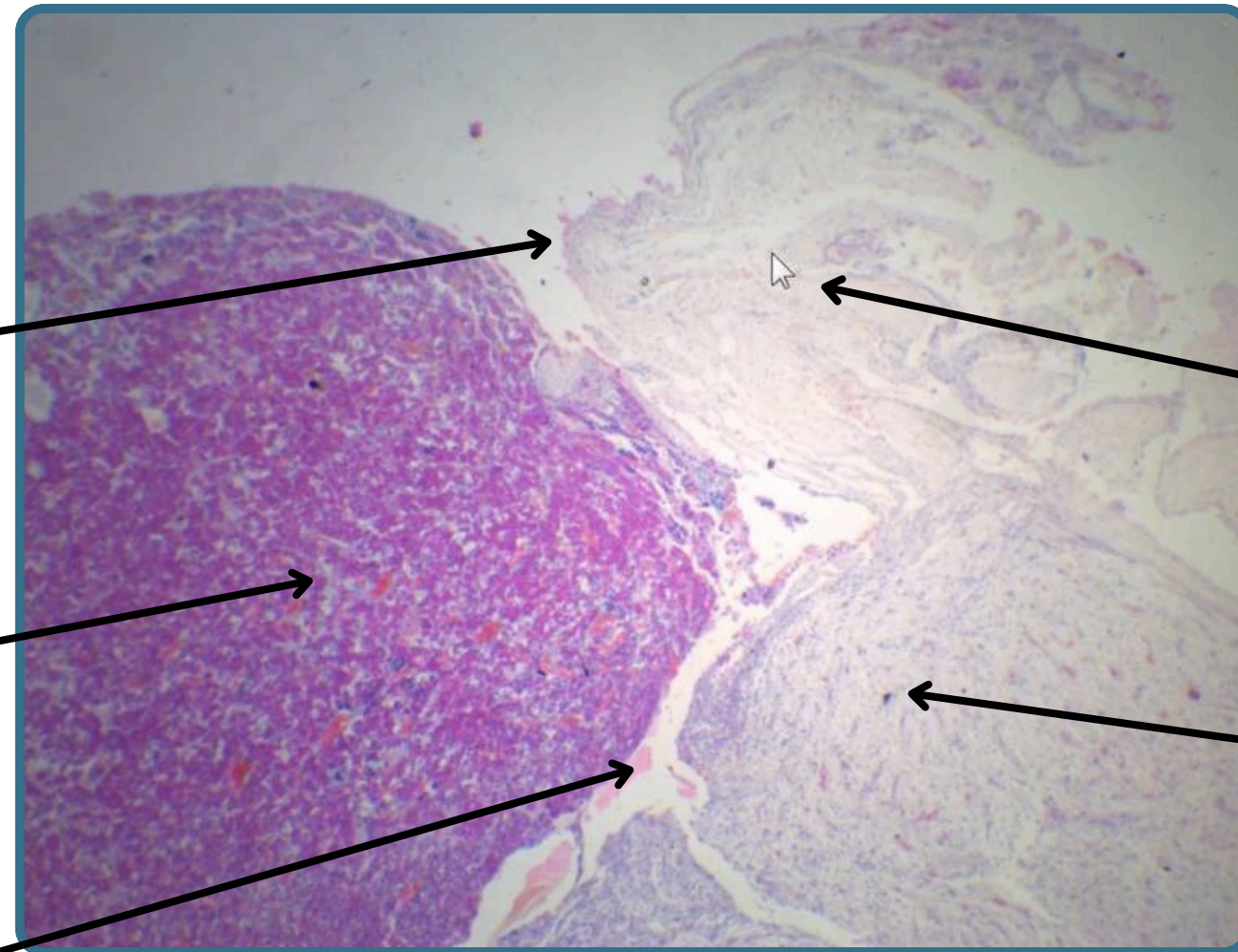
### Anterior Pituitary (Adenohypophysis)

Consist Of :

1- Pars Tuberalis

2- Pars Distalis

3- Pars Intermedia



### Posterior Pituitary (Neurohypophysis)

Consist Of :

1- Infundibulum

2- Pars Nervosa



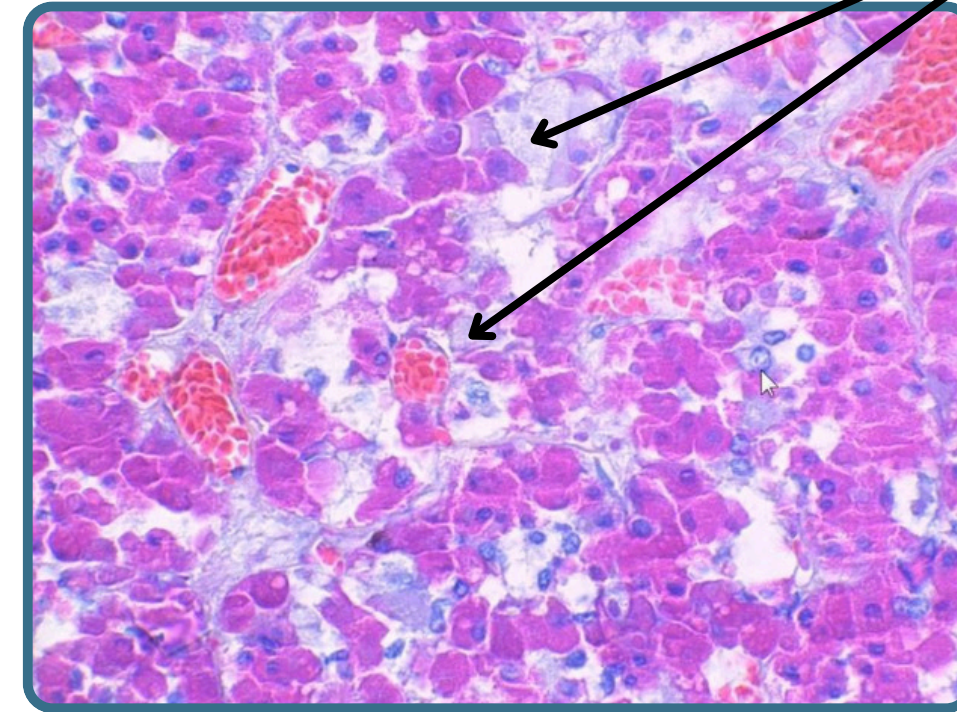
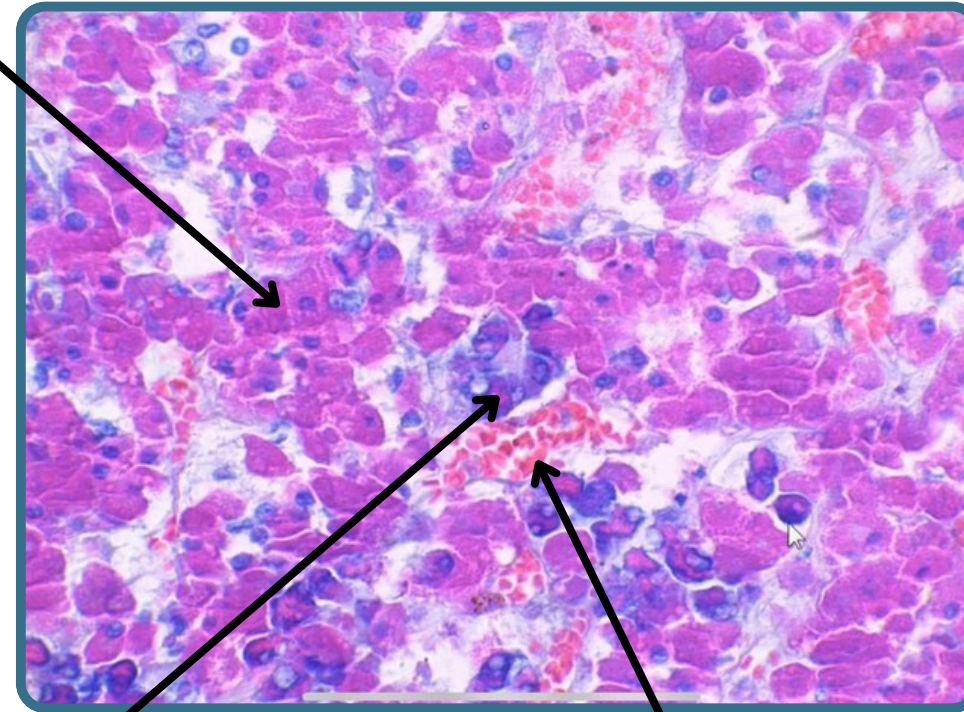
# ENDOCRINE GLANDS



## Anterior Pituitary Gland Pars Distalis

**Acidophilic Chromophil**

**Chromophobe Cells**



**Basophilic Chromophil**

**Fenestrated Capillaries**

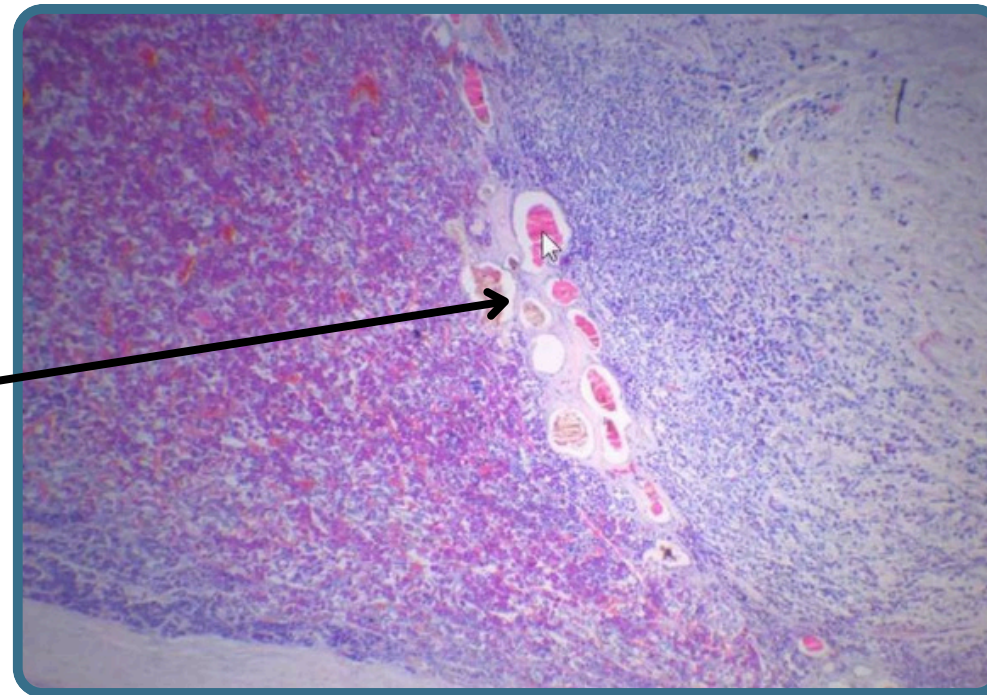


# ENDOCRINE GLANDS

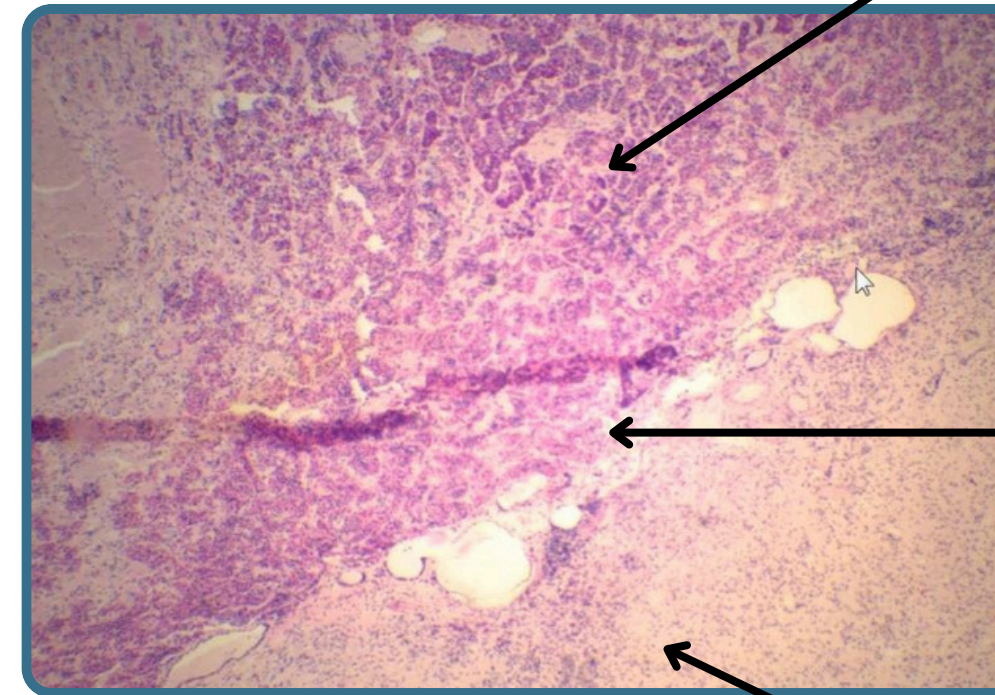


## Anterior Pituitary Gland Pars Intermedia

Pars Intermedia



Para distalis



Pars Intermedia  
with colloid cysts

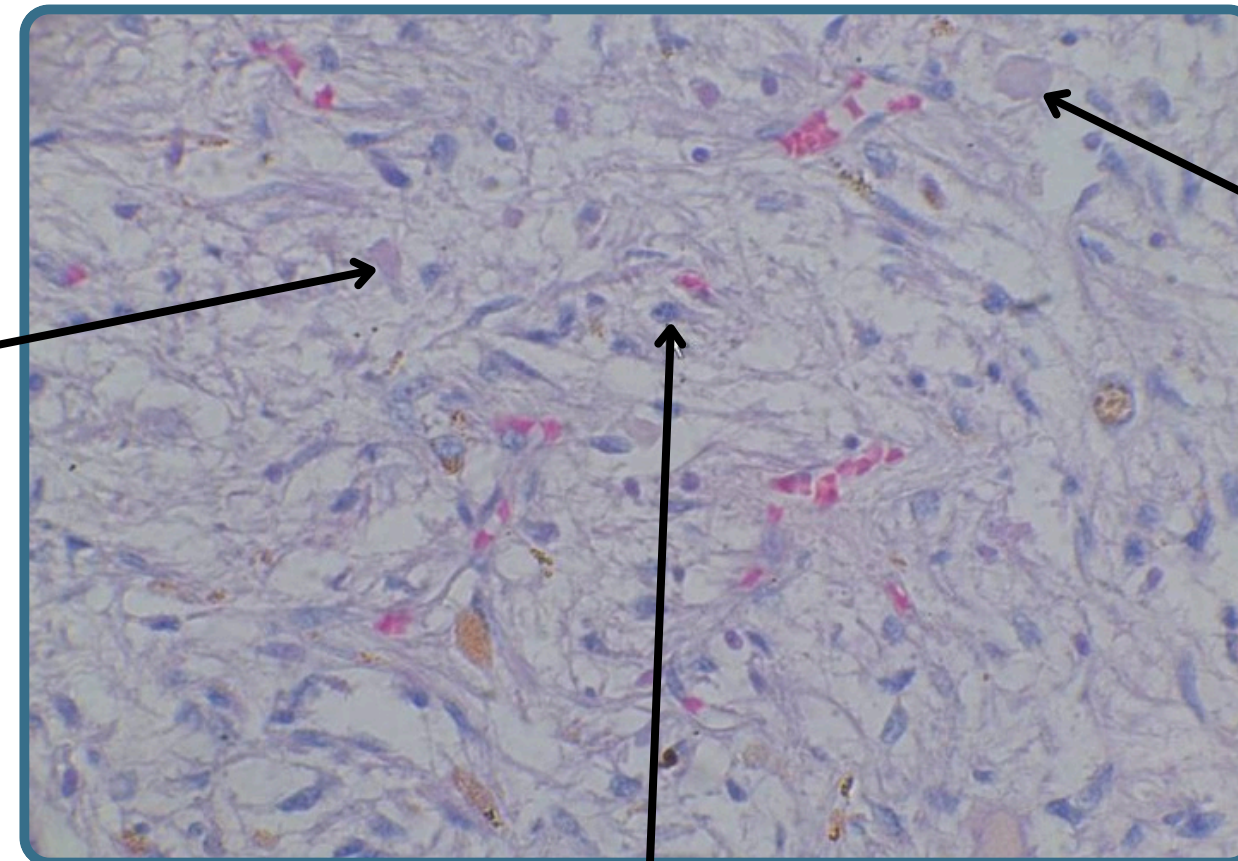
pars nervosa

# ENDOCRINE GLANDS



## Anterior Pituitary Gland Pars Nervosa

Herring Bodies



Herring Bodies

Pituicytes



# ENDOCRINE GLANDS

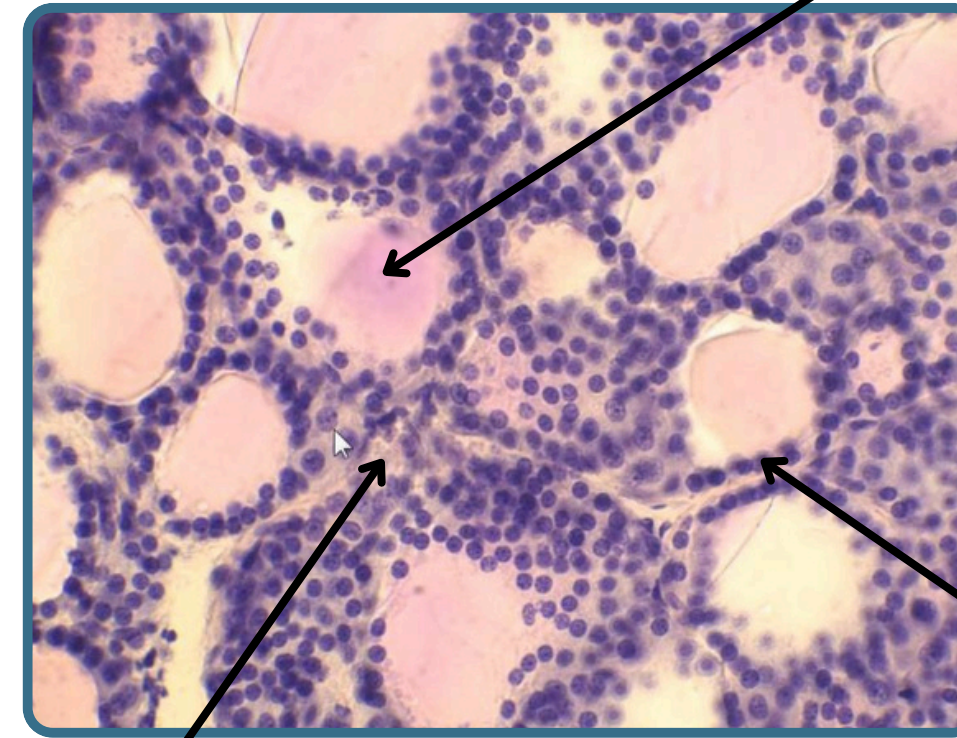


## Thyroid Gland

**Connective Tissue Capsule**



**Colloid (Thyroglobulin)  
With Filled Lumen**



**Parafollicular Cells**

**Follicle Epithelium  
(squamous or cuboidal)**



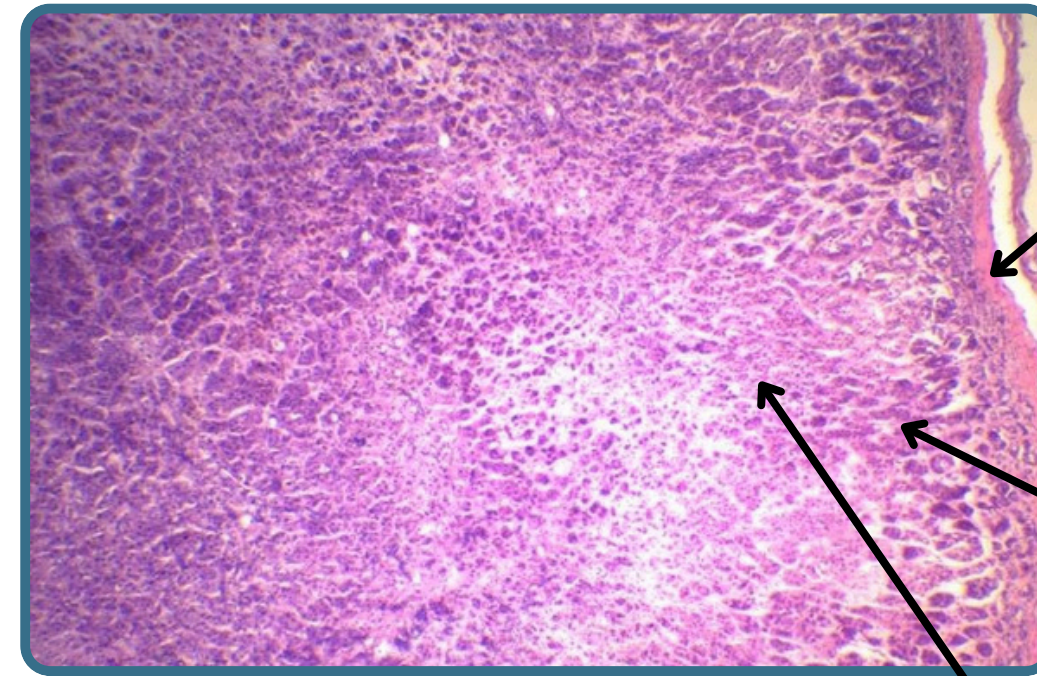
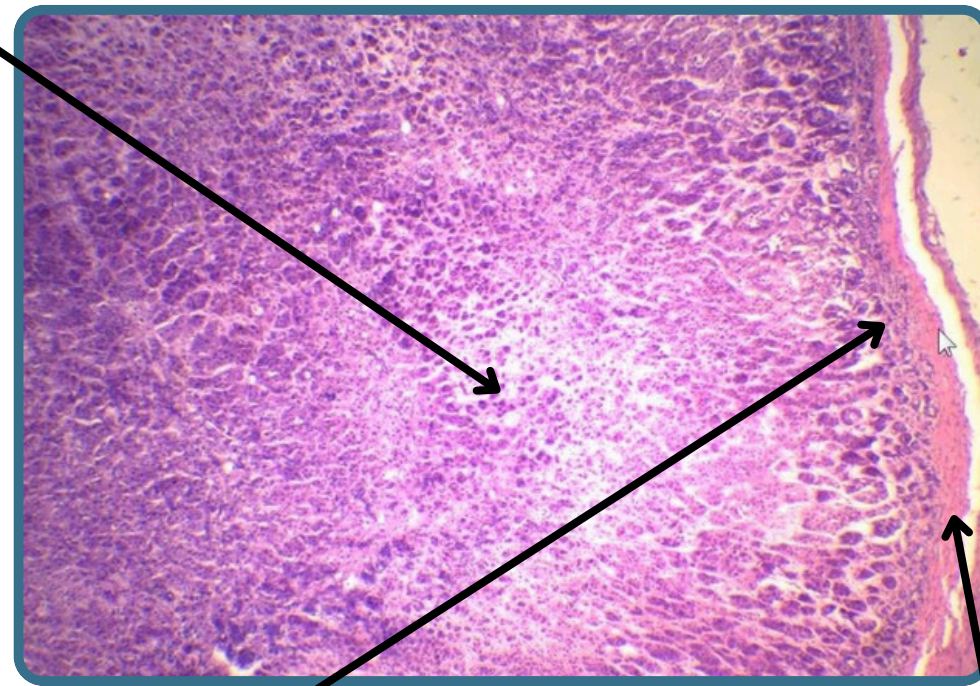
# ENDOCRINE GLANDS



## Adrenal Gland

**Adrenal Medulla**

**The Adrenal Cortex Consist Of :**



**1- Zona Glomerulosa**

**2- Zona Fasciculata**

**3- Zona Reticularis**

**Adrenal Cortex**

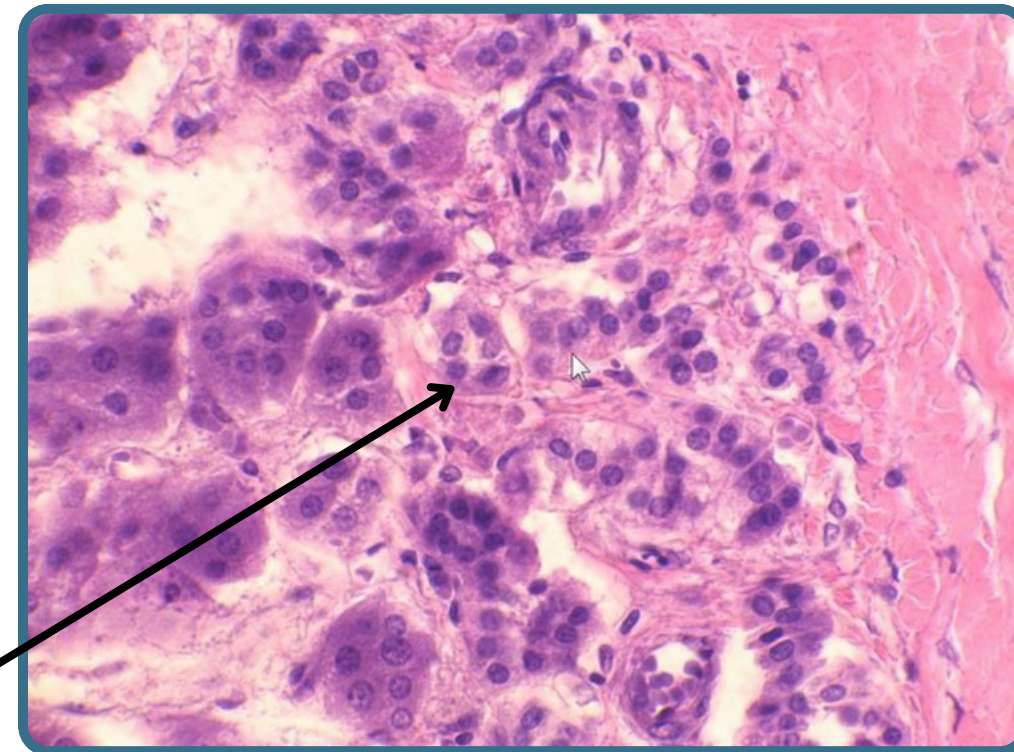
**Connective Tissue Capsule**



# ENDOCRINE GLANDS

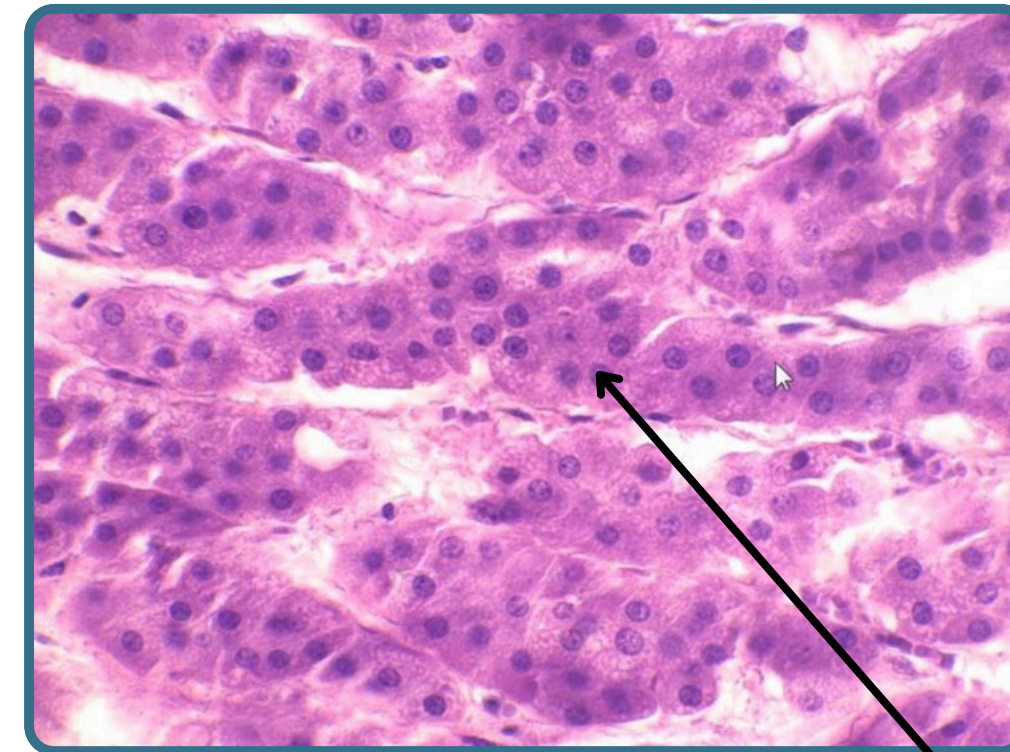


## Adrenal Gland



### Zona Glomerulosa

**15%** directly beneath the capsule  
**Pyramidal** or **columnar** cells arranged in **rounded course** of secretory cell



### Zona Fasciculata

Long course of secretory cells (filled with lipid droplet and appear **polyhedral vacuolated**)

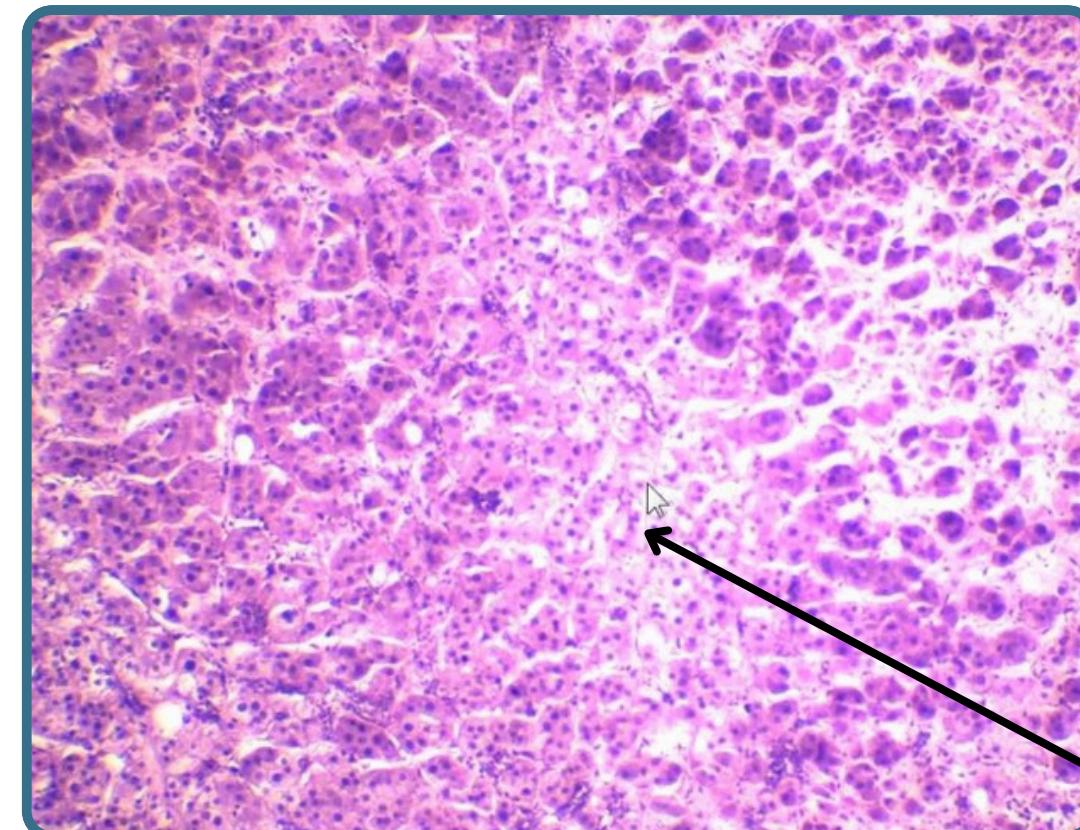
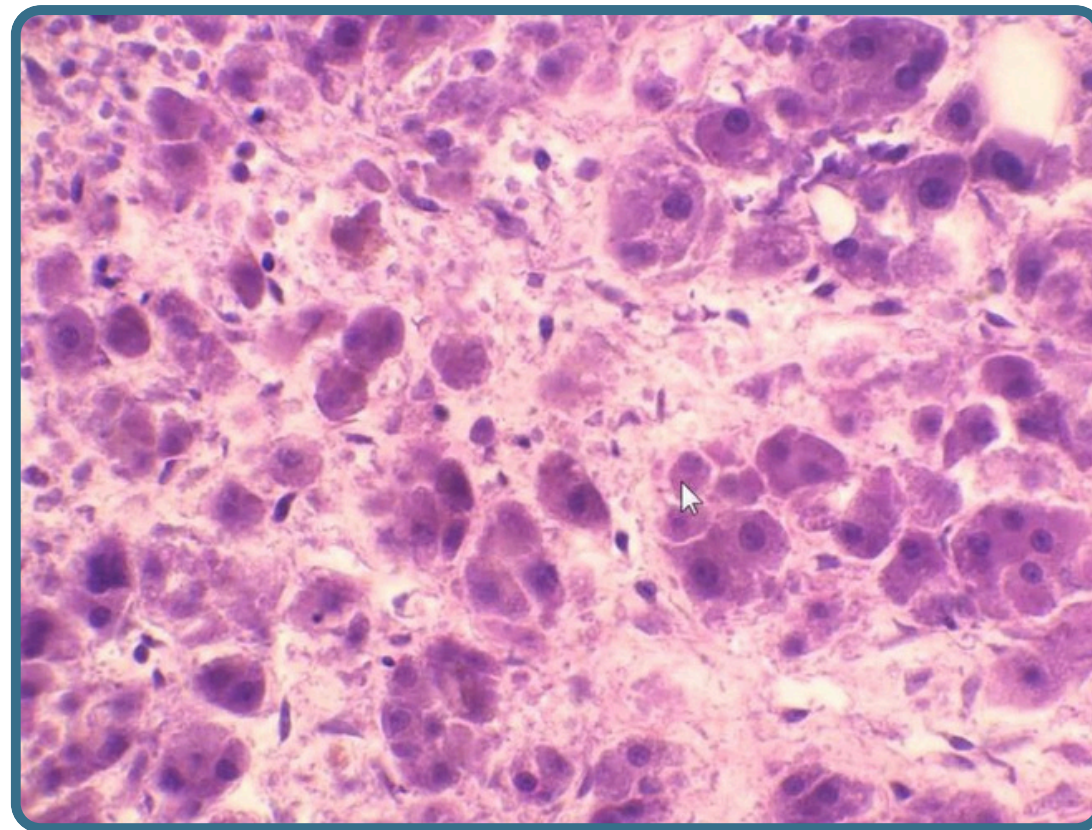




# ENDOCRINE GLANDS



## Adrenal Gland



### Zona Reticularis

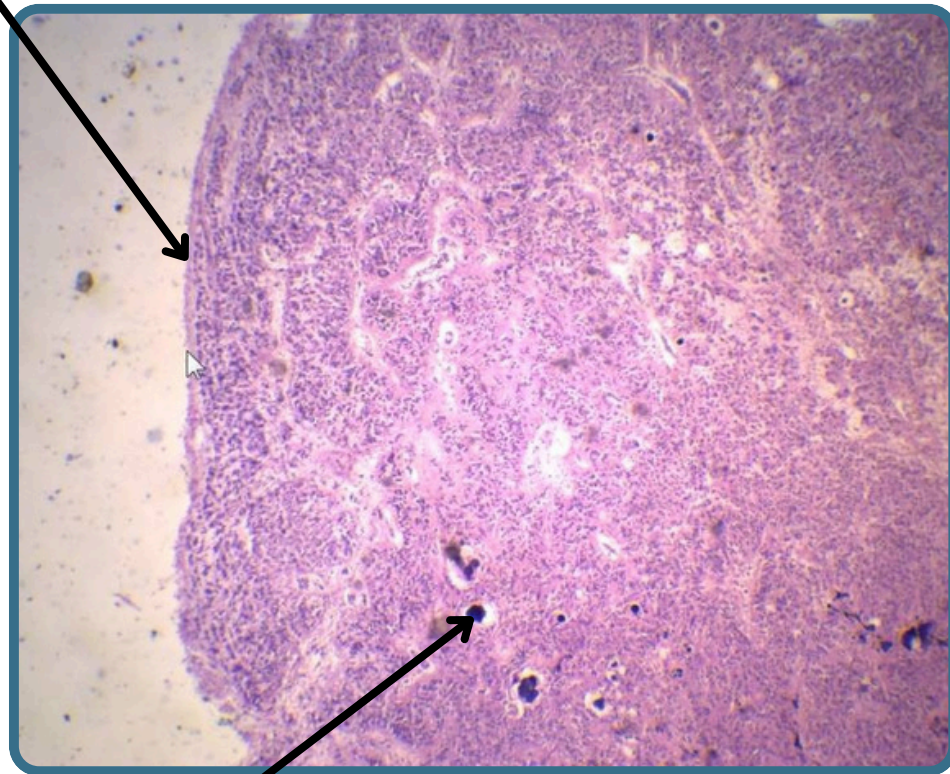
**Irregular course with few lipid droplets**

### Adrenal Medulla

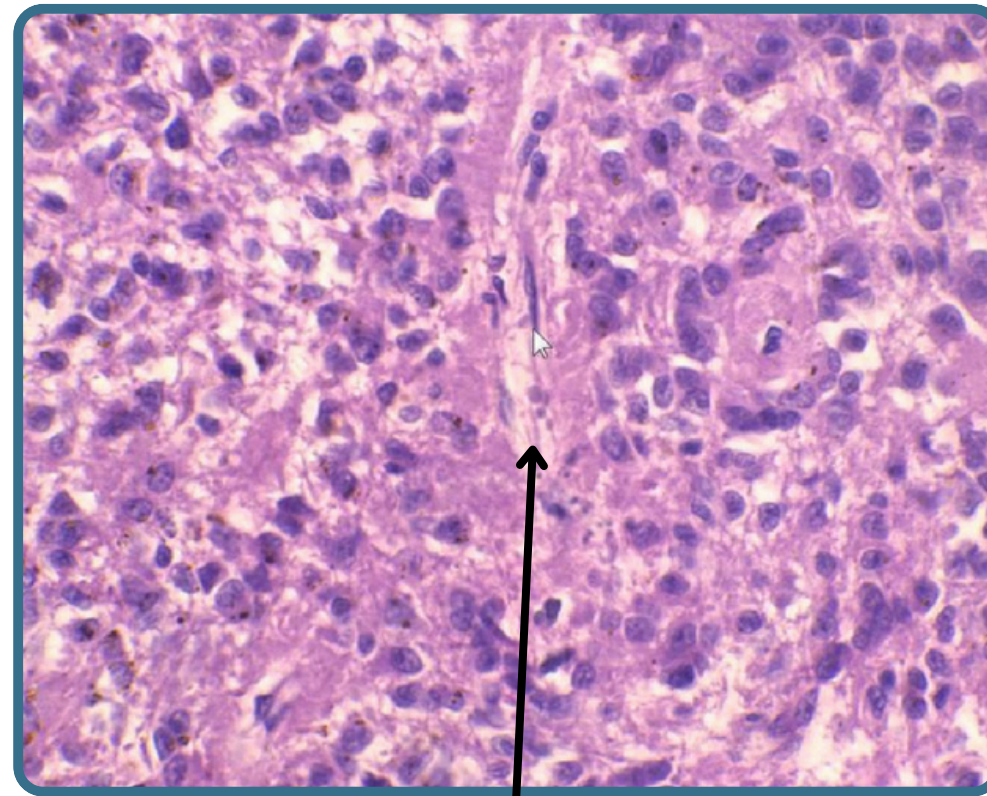


## Pineal Gland

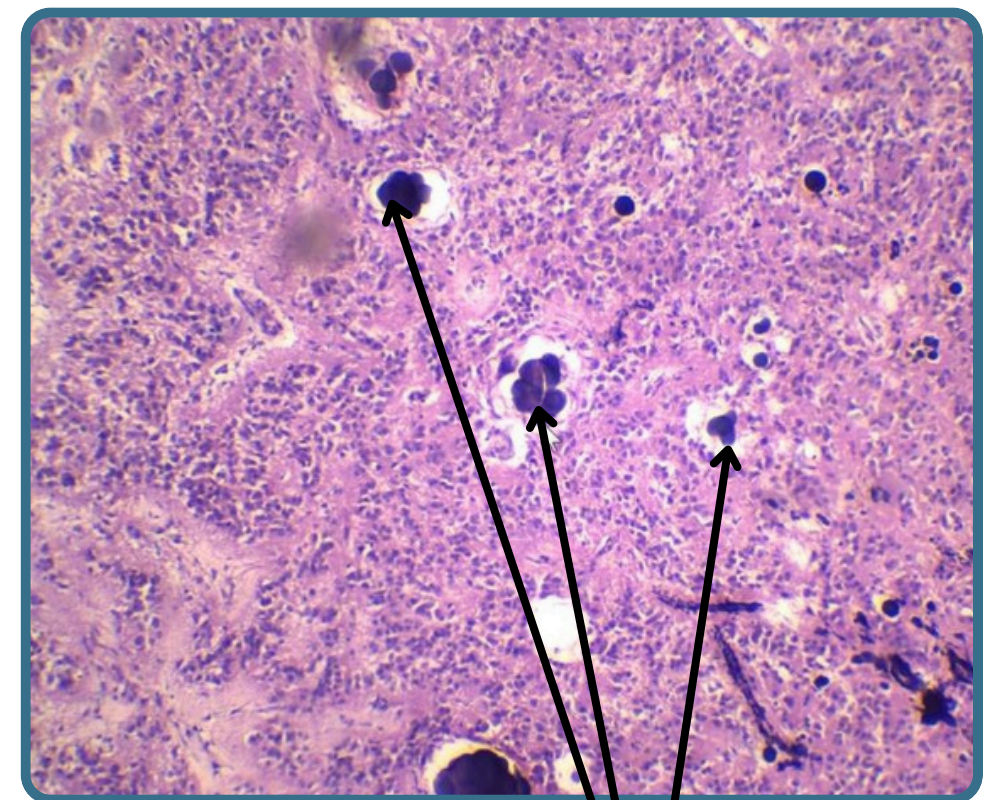
**Connective Tissue  
Capsule of Pia Matter**



**Brain Sand (calcium and  
magnesium salt concretion)**  
Main Feature of Pineal Gland



**Modified astrocytes in  
between pinealocytes**



**Brain Sand (calcium and  
magnesium salt concretion)**  
Main Feature of Pineal Gland

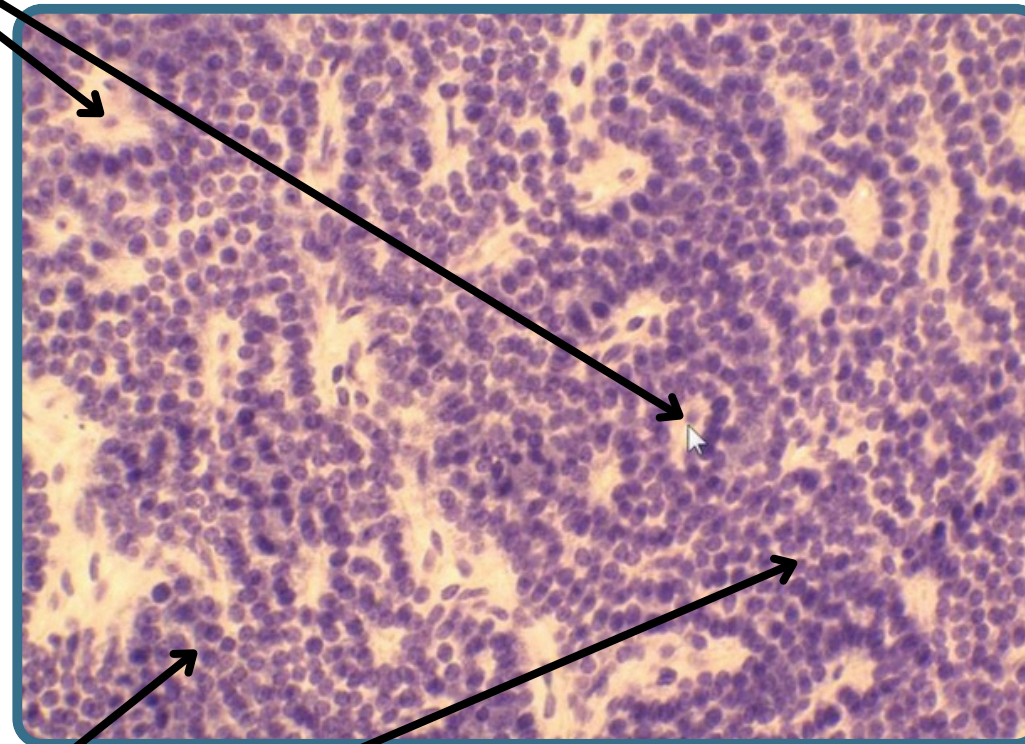


# ENDOCRINE GLANDS

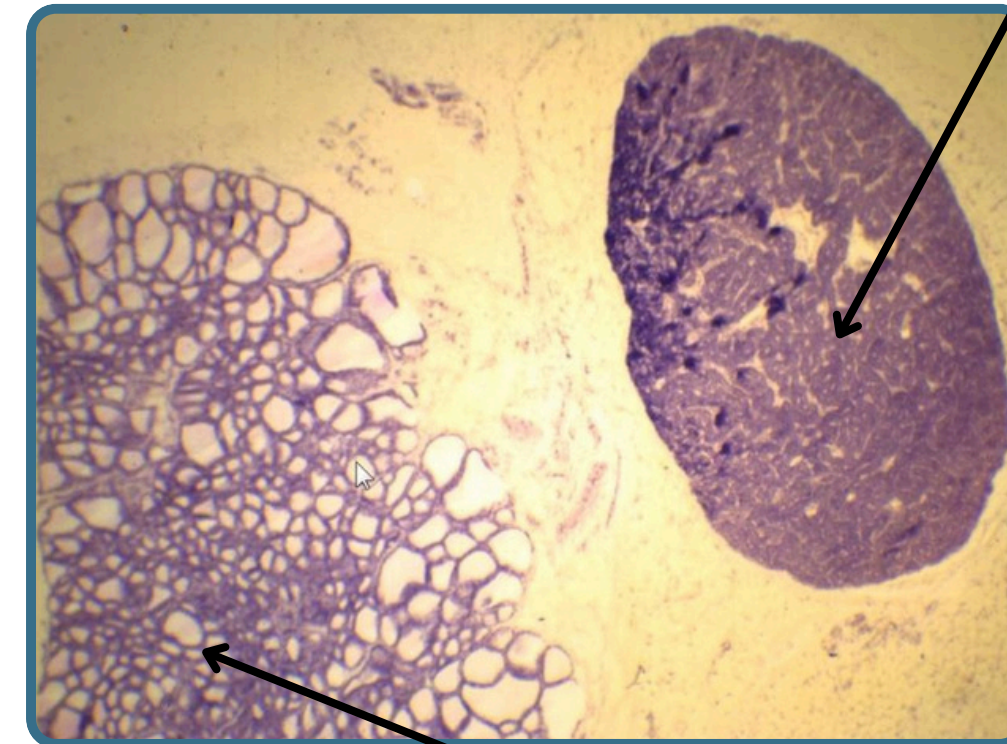


## Parathyroid Gland

Oxyphil Cells



Parathyroid Gland



Chief Cells

Thyroid Gland

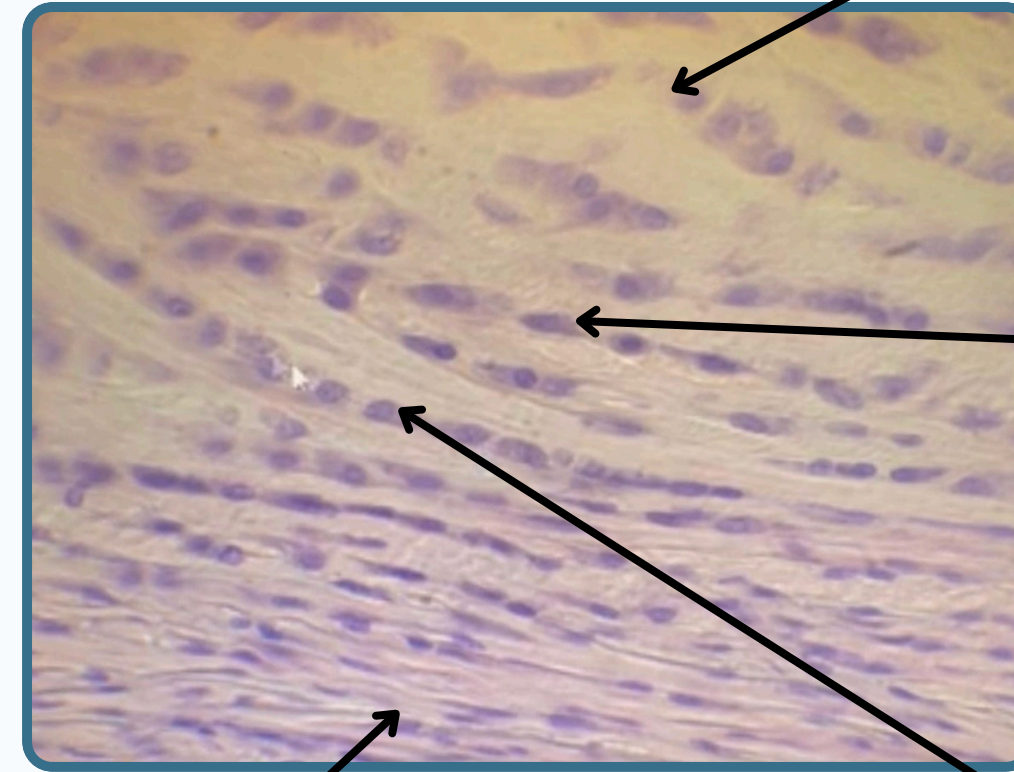
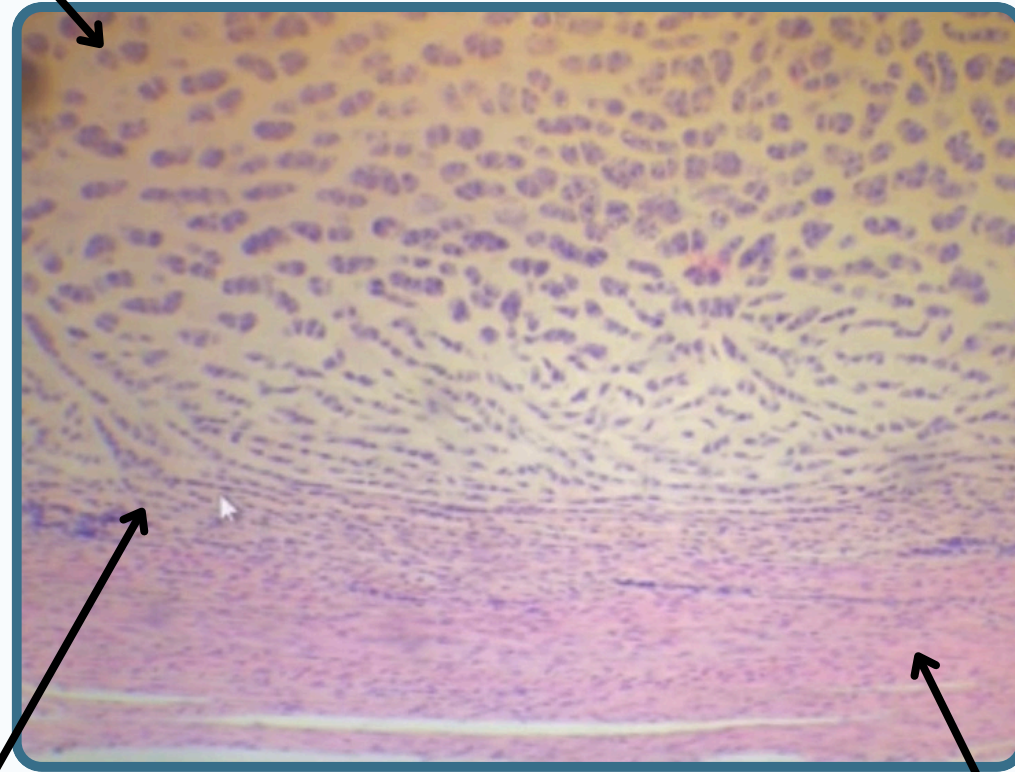


# CARTILAGE

## Fibrocartilage

Hyaline cartilage

Hyaline cartilage



Type one collagen fibers

Fibrocartilage

Dense Connective Tissue

Fibroblast  
Arranged in rows

**\*All Slides Are Stained By Hematoxylin and Eosin\***

# THANK YOU

EDITED BY



© ALL COPYRIGHT ARE RESERVED FOR  
ARECH AND SATURN MEDIC

[WWW.SATURNMEDIC.COM](http://WWW.SATURNMEDIC.COM)