

# HISTOLOGY PRACTICAL LECTURE - 12 -

## GIT PART 1

### ORAL CAVITY+ESOPHAGUS

EDITED BY



© ALL COPYRIGHT ARE RESERVED FOR  
ARECH AND SATURN MEDIC

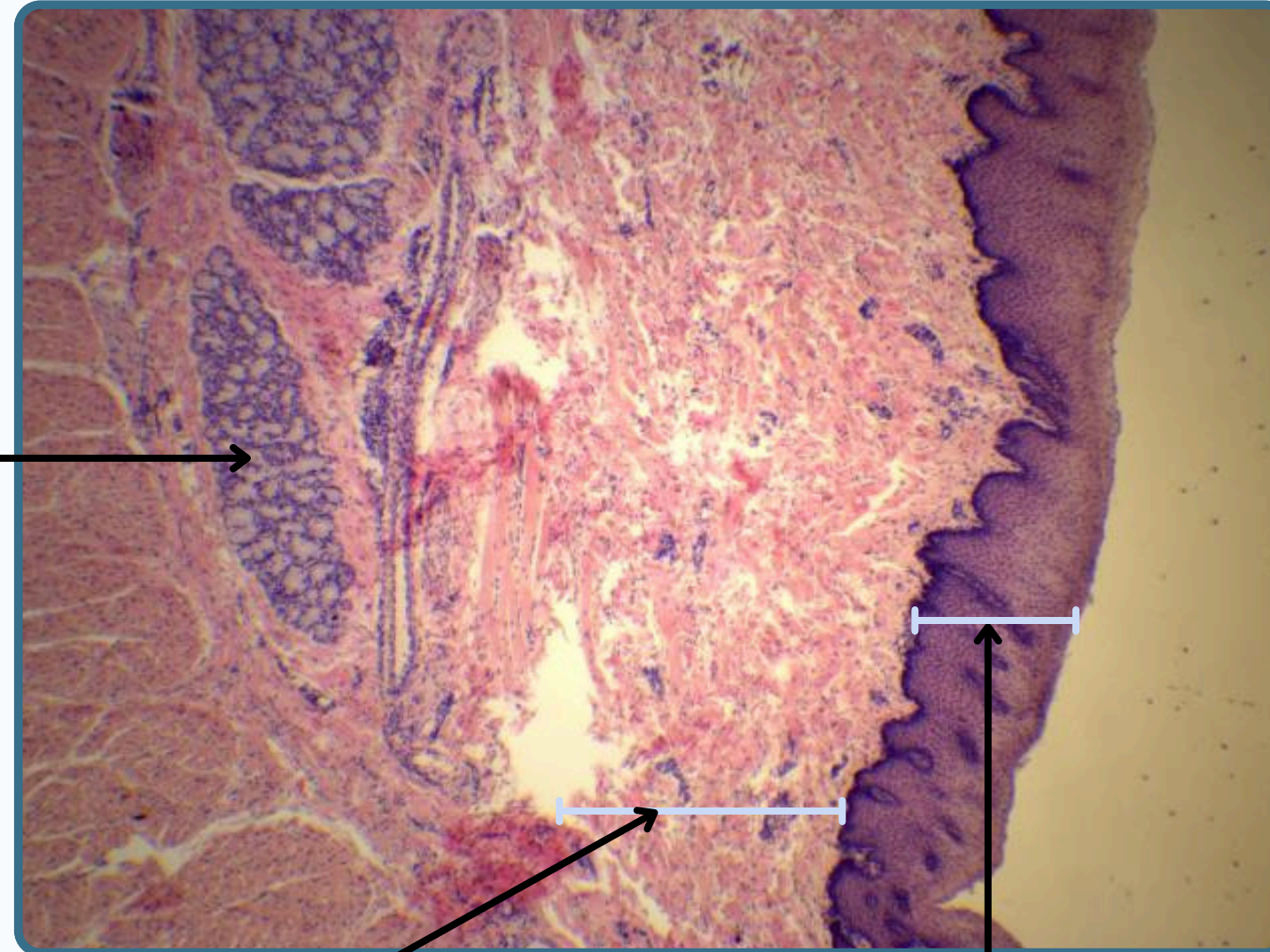
[WWW.SATURNMEDIC.COM](http://WWW.SATURNMEDIC.COM)





## inner Surface of The Lips

**Labial Gland  
or Salivary Gland**



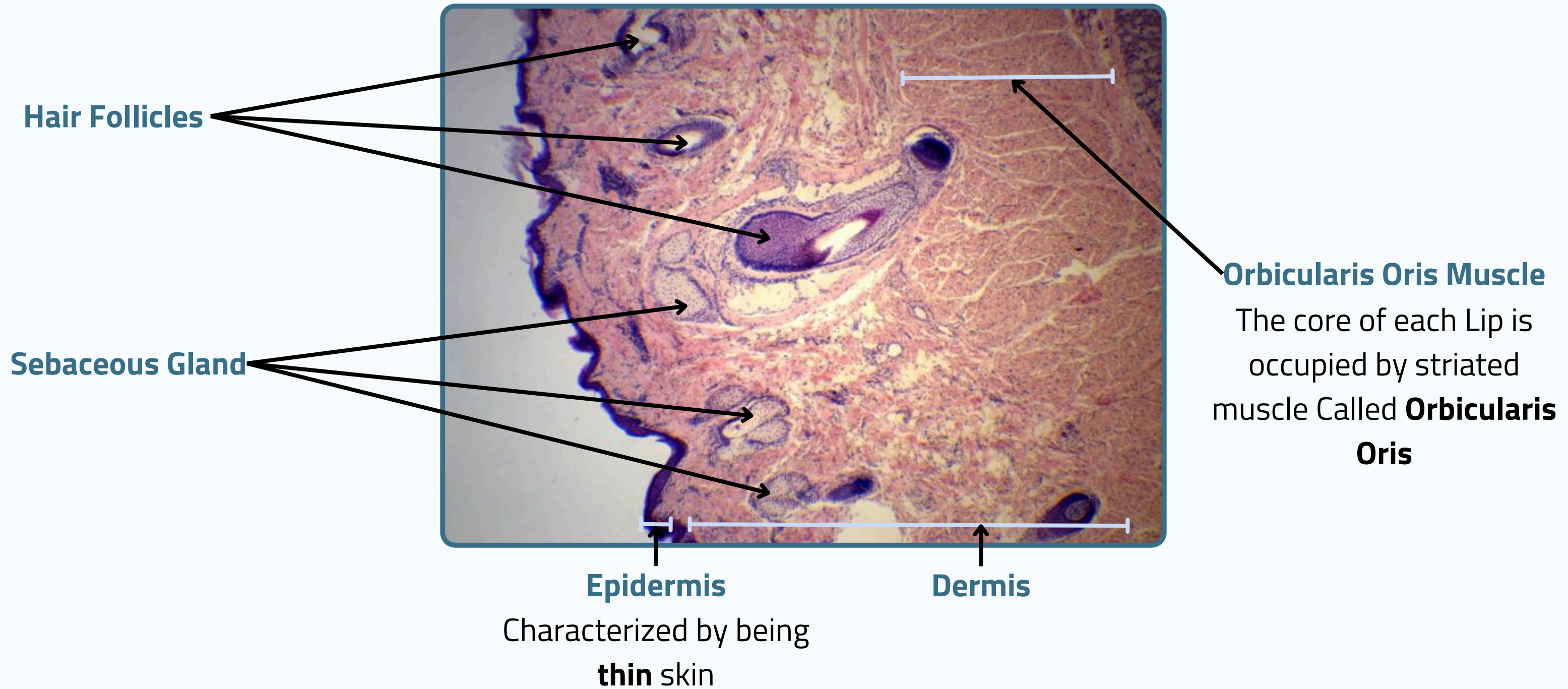
**Lamina Propria**  
of loose connective tissue  
with blood vessels

**Mucosa**  
Stratified squamous non  
keratinized epithelium





## Outer Surface of The Lips

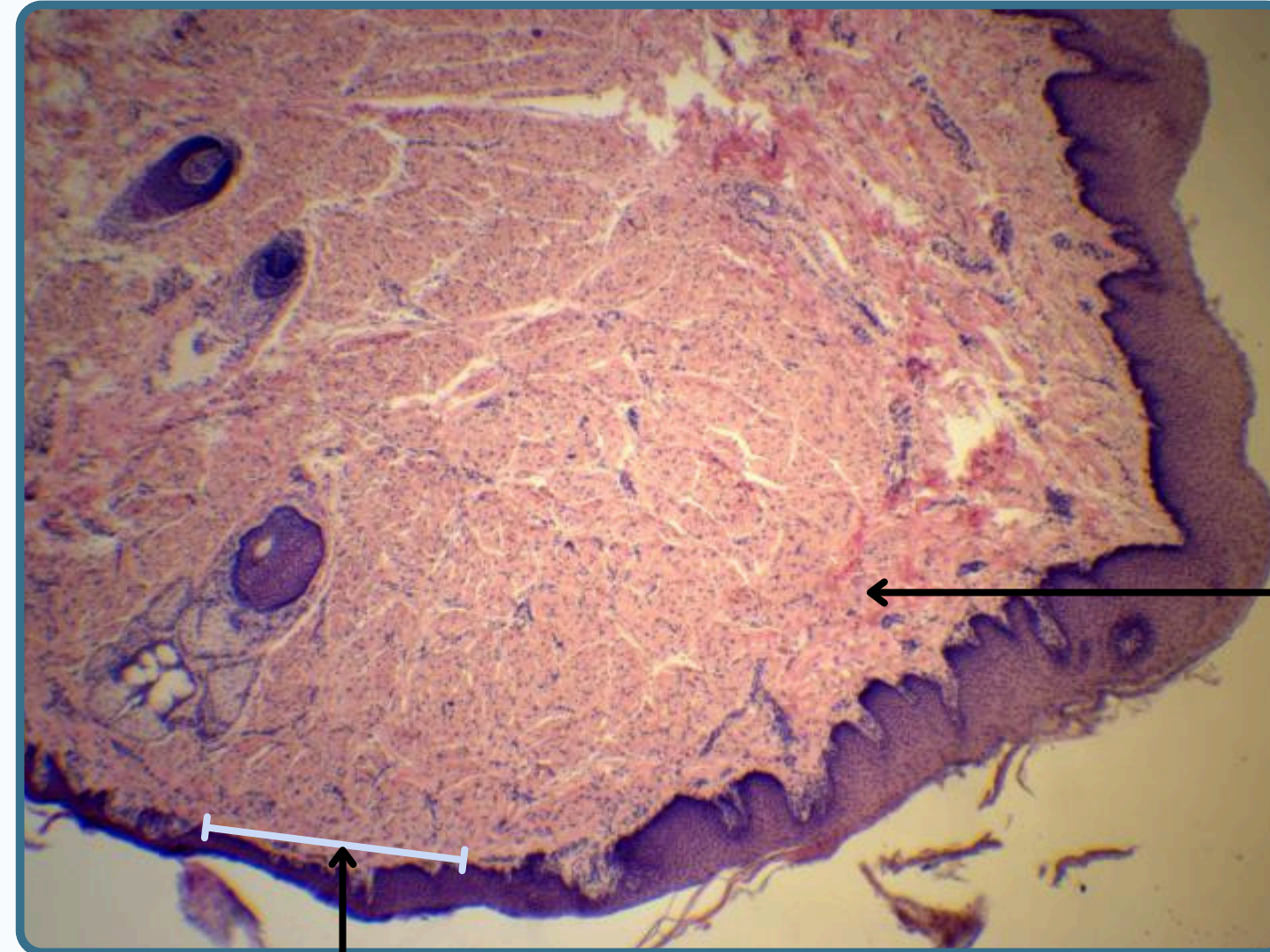






## Red Vermilion Border

- The **red vermilion border** has slightly keratinized or thin stratified squamous epithelium
- The connective tissues of this region lack sweat or silvery glands
- This connective tissues is rich in capillaries and sensory innervation that give the red or pink color to this region



**Connective Tissue**

**Red Vermilion Border**

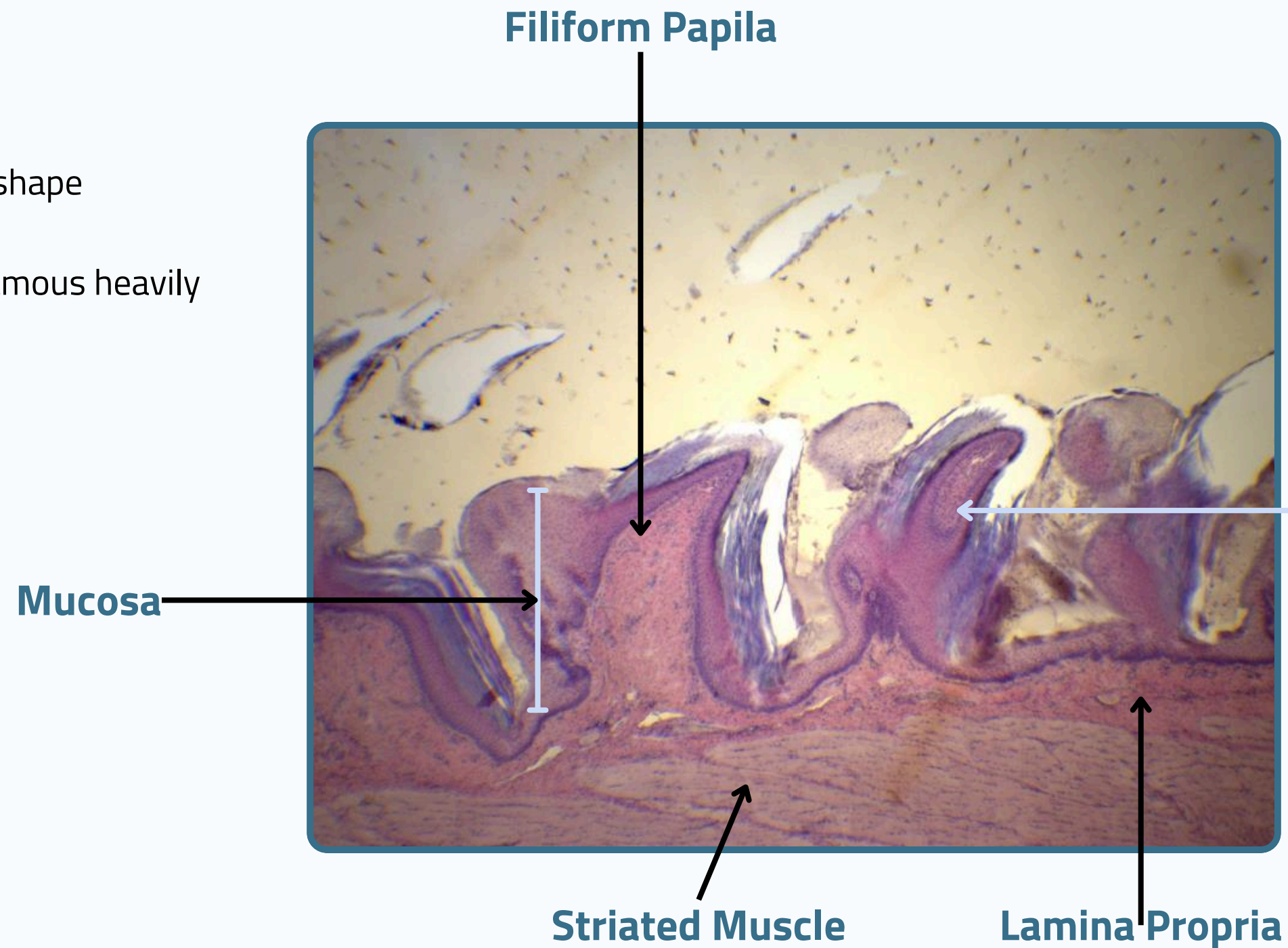




## Filiform Papillae

### Filiform Papillae

- it has elongated conical shape
- covered by stratified squamous heavily keratinized epithelium
- lack taste buds



### Filiform Papilla

The core of each Lip is occupied by striated muscle Called **Orbicularis Oris**

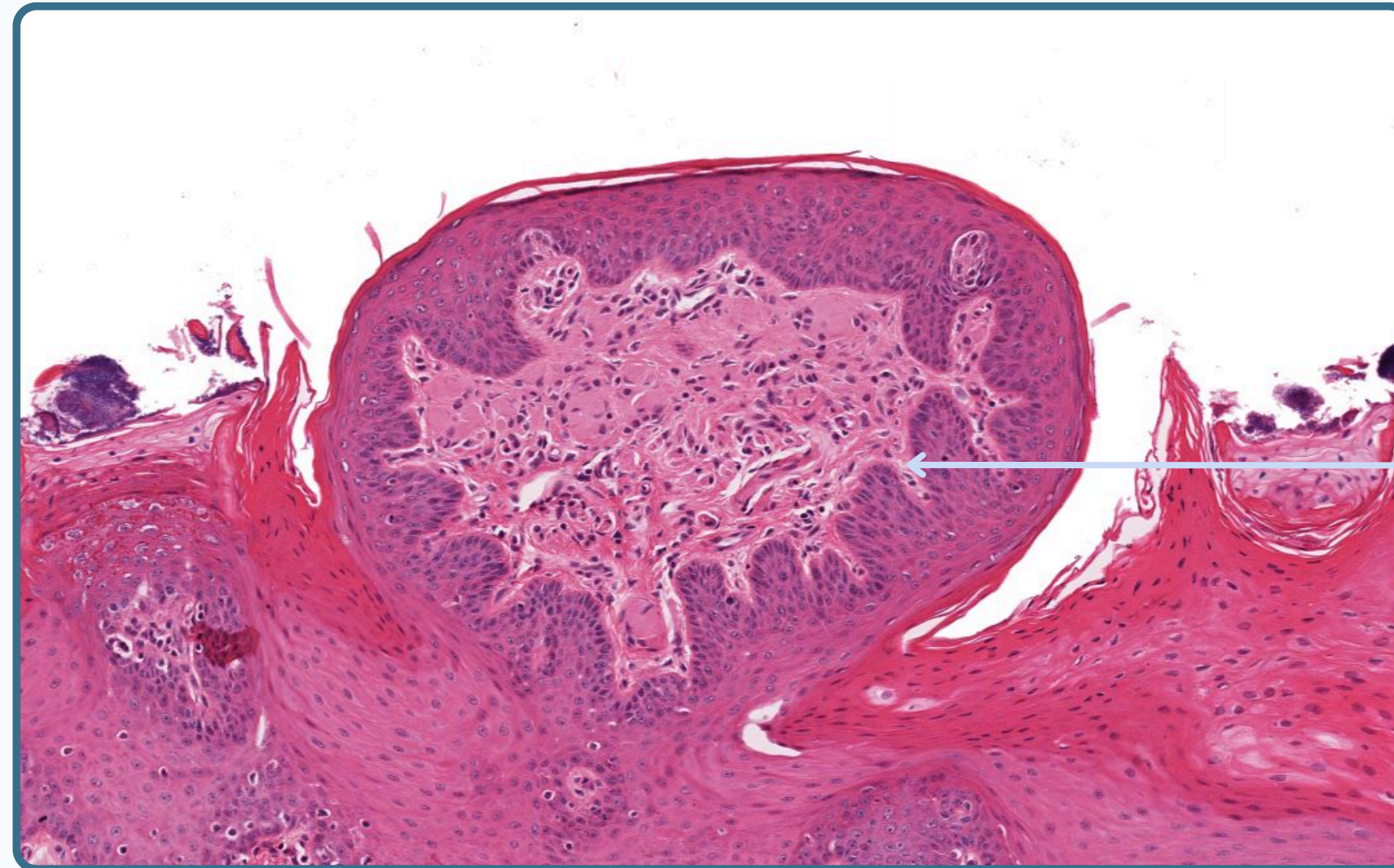




## Fungiform Papillae

### Fungiform Papillae

- it has mushroom shaped
- keratinized covered by lightly stratified squamous epithelium
- This type is much less numerous than filliform papillae



Fungiform Papillae

© image from Histology Guide

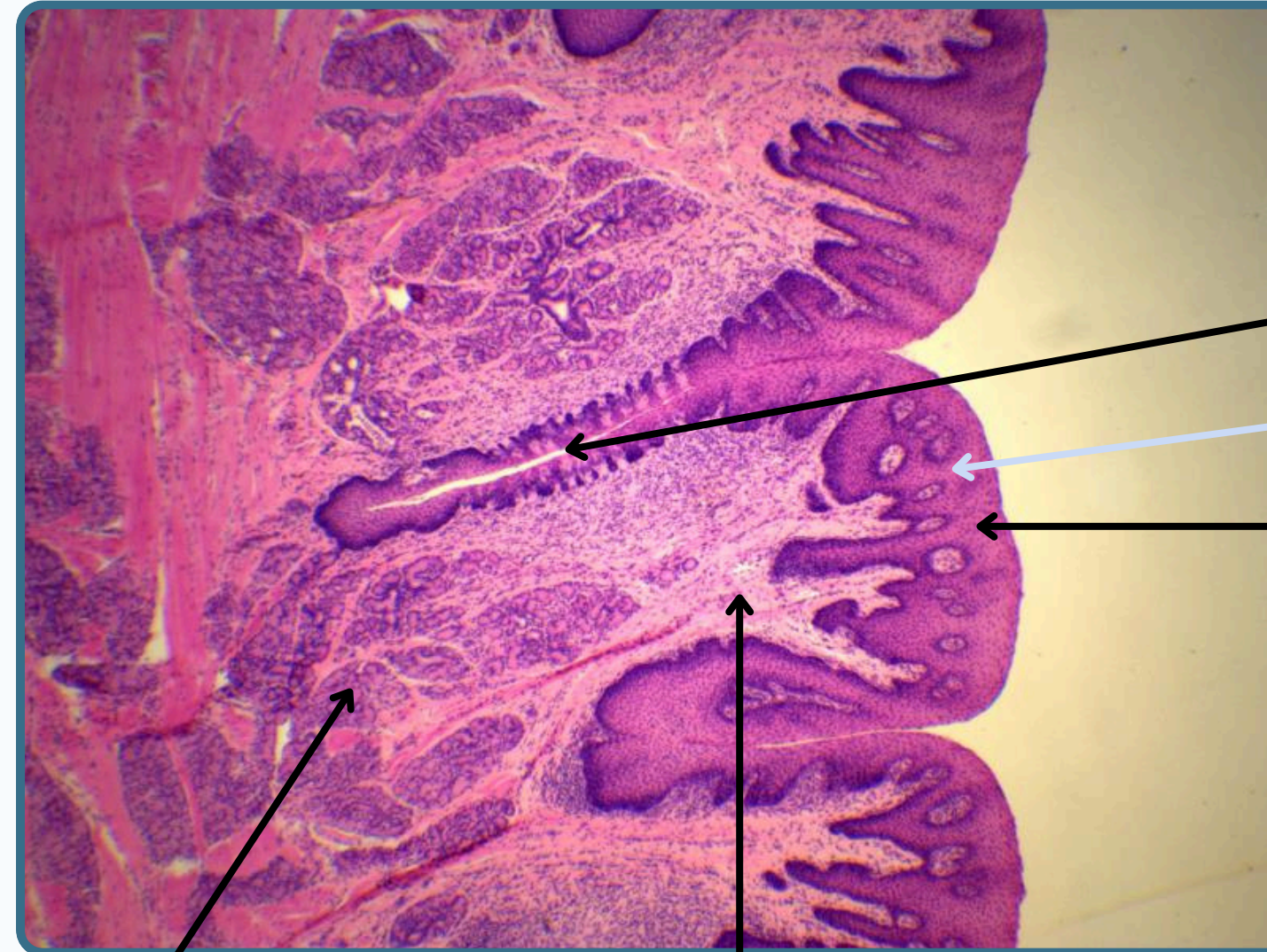




## Foliate Papillae

### Foliate Papillae

- foliate papillae
- has Parallel ridges and groove
- This type is rudimentary in human especially in old age



Parallel Groves

Foliate Papillae

Stratified squamous epithelium

Salivary Gland

Lamina Propria

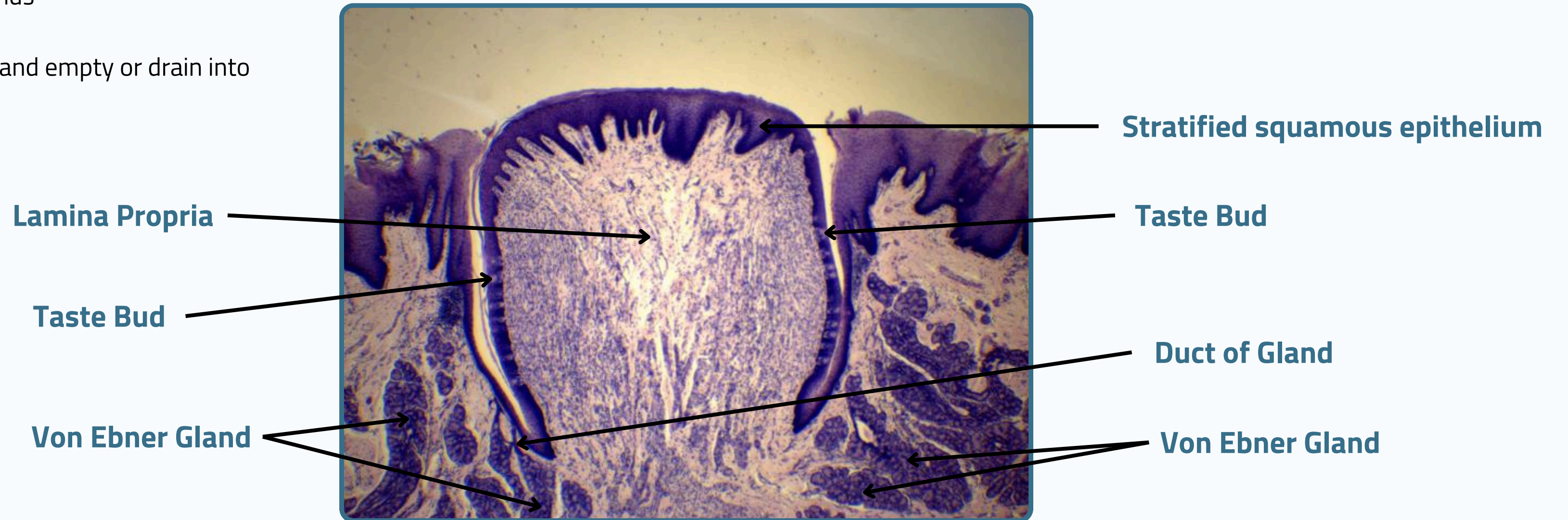




## Circumvallate Papillae

### Circumvallate Papillae

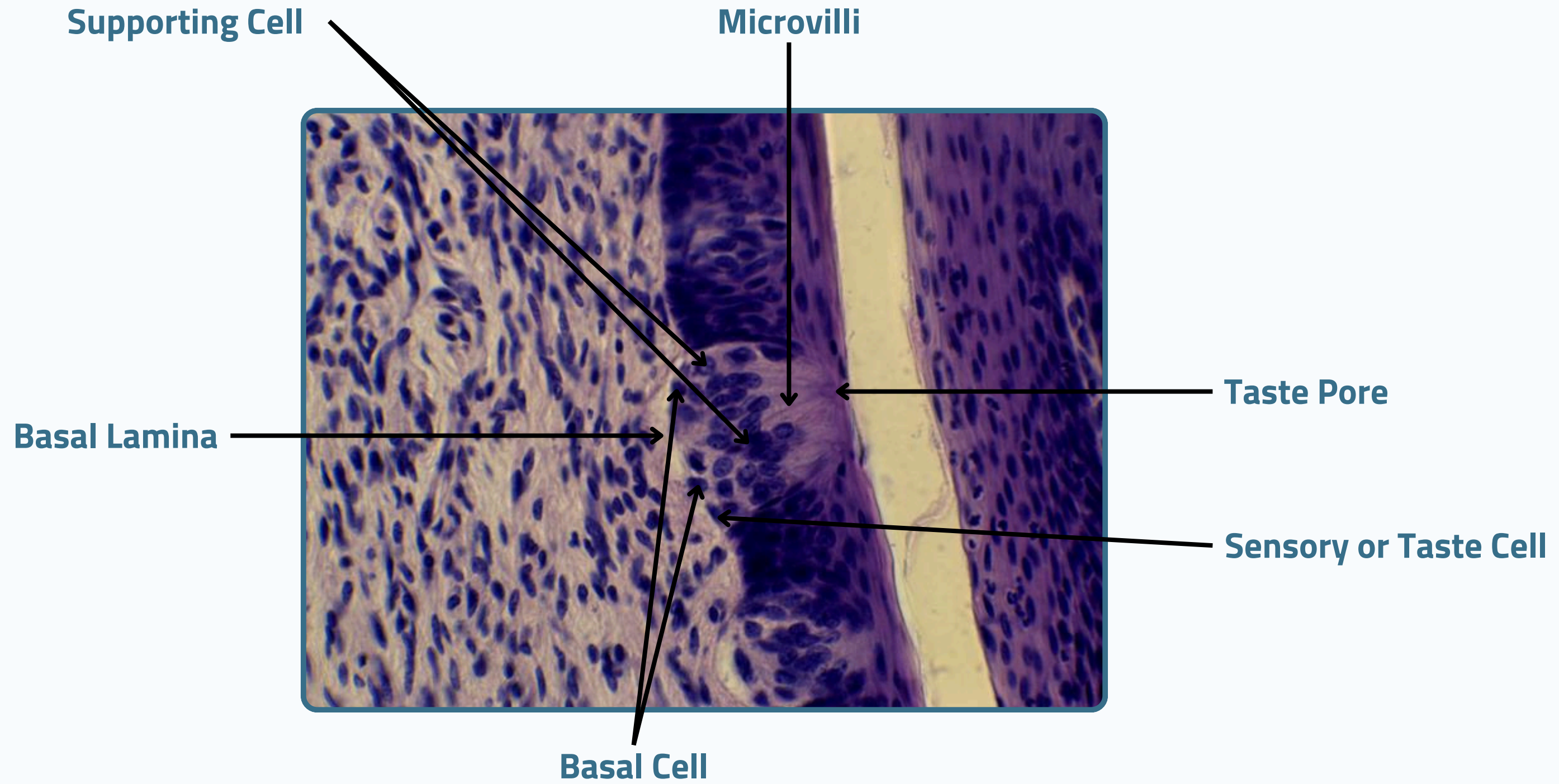
- Circumvallate papillae which is the largest papillae
- has Serious secreting silvery glands called von ebner glands
- The Duct of gland empty or drain into groove







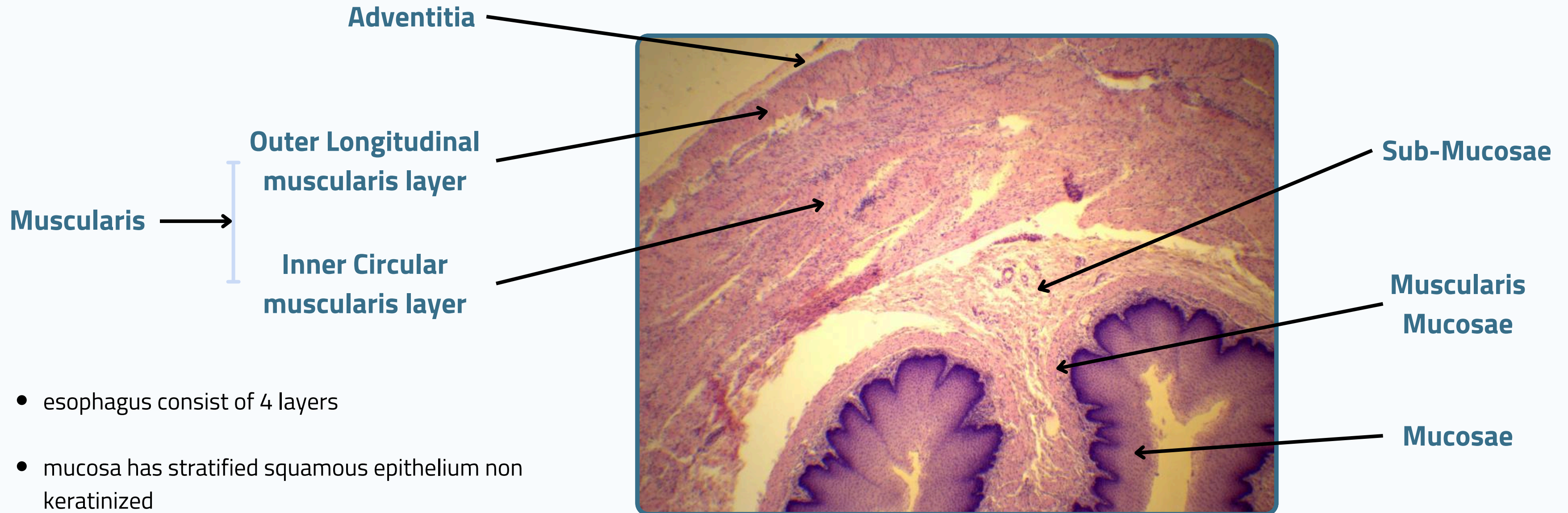
# Taste Bud







## Esophagus



- esophagus consist of 4 layers
- mucosa has stratified squamous epithelium non keratinized
- muscularis mucosa (smooth muscle) separate the first two layers
- submucosa is dens Ct tissue with large blood vessel and **meissner nerve plexus**

**There is a Lamina Propria beneath the Mucosa**



# THANK YOU

EDITED BY



© ALL COPYRIGHT ARE RESERVED FOR  
ARECH AND SATURN MEDIC

[WWW.SATURNMEDIC.COM](http://WWW.SATURNMEDIC.COM)