

HISTOLOGY PRACTICAL LECTURE - 13 -

GIT PART 2

STOMACH+SMALL INTESTINE

EDITED BY

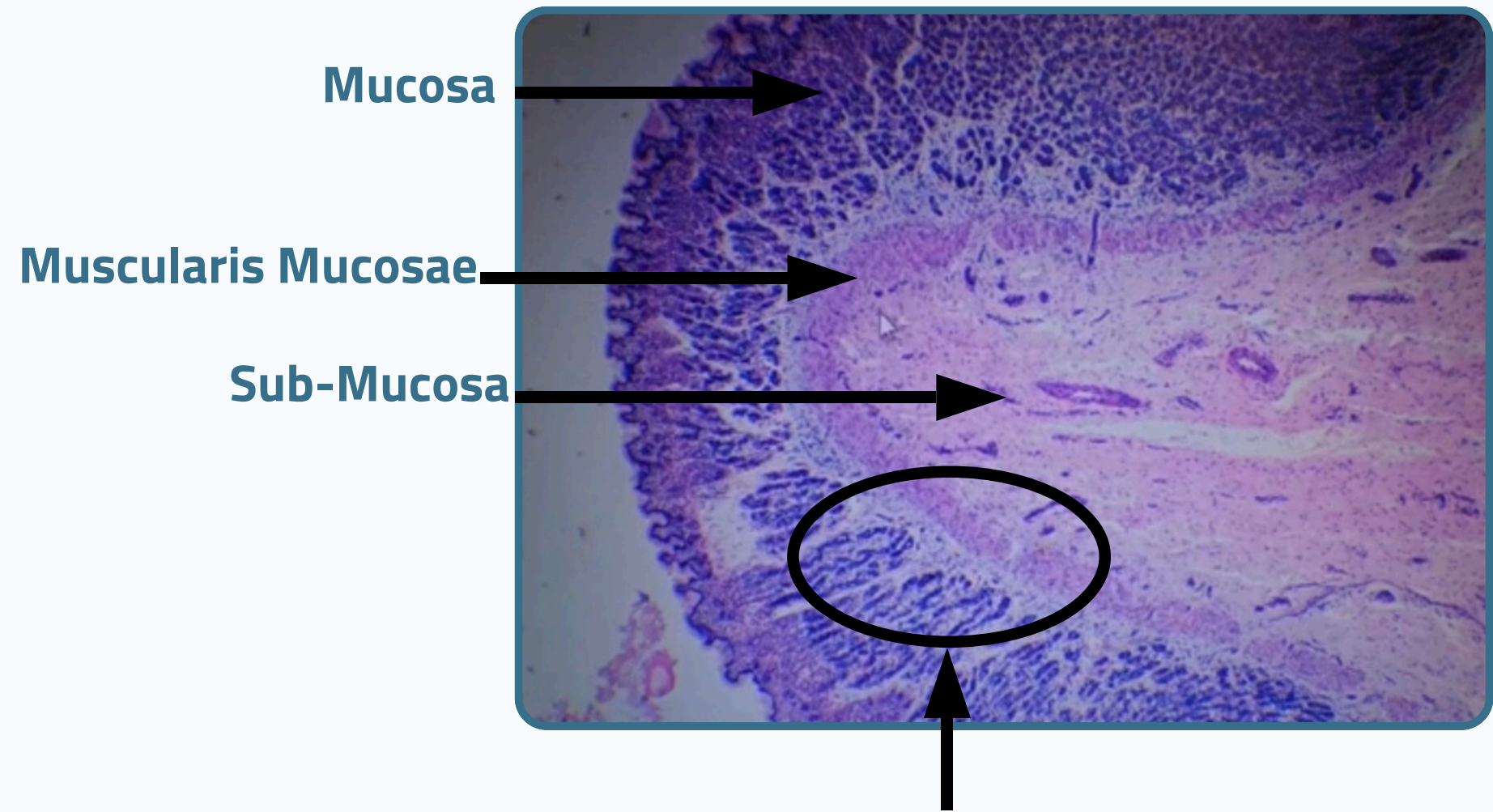


© ALL COPYRIGHT ARE RESERVED FOR
ARECH AND SATURN MEDIC

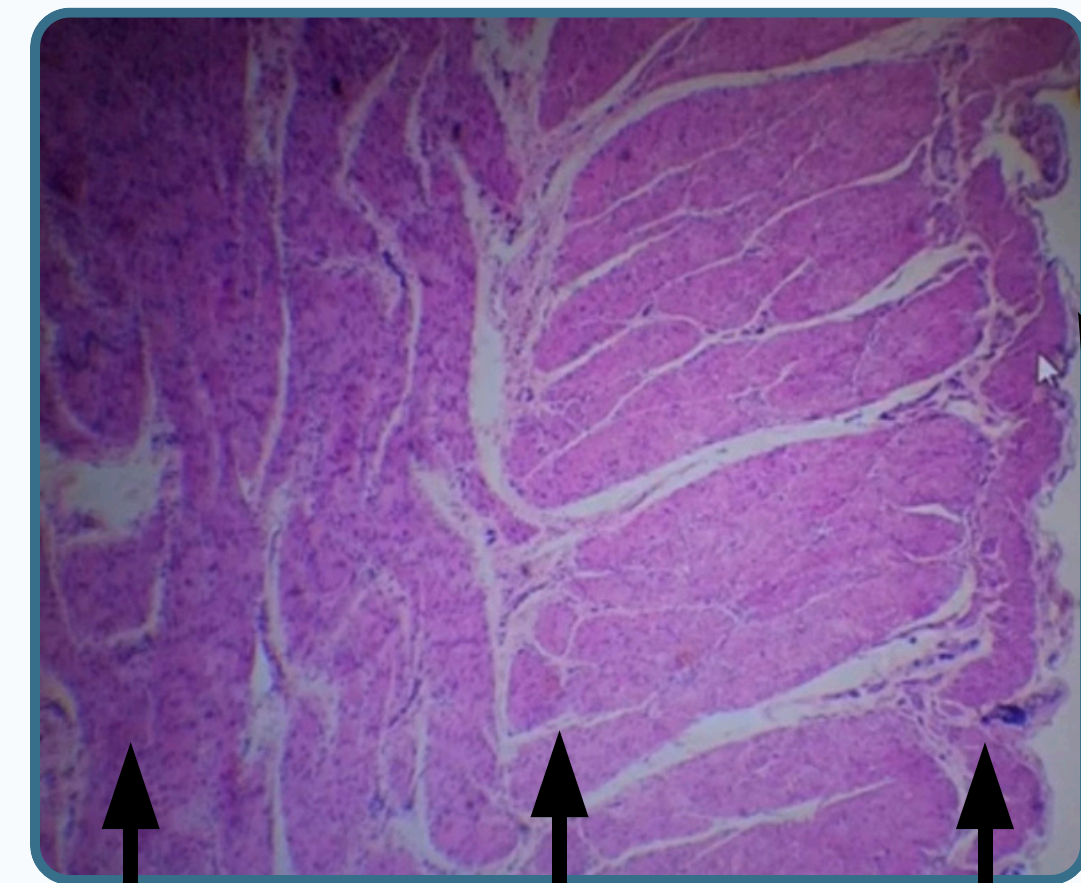
WWW.SATURNMEDIC.COM



Fundus Region of The Stomach



The whole structure we called it "rugae"



Serosa Thin layers of CT Covered by Mesothelium

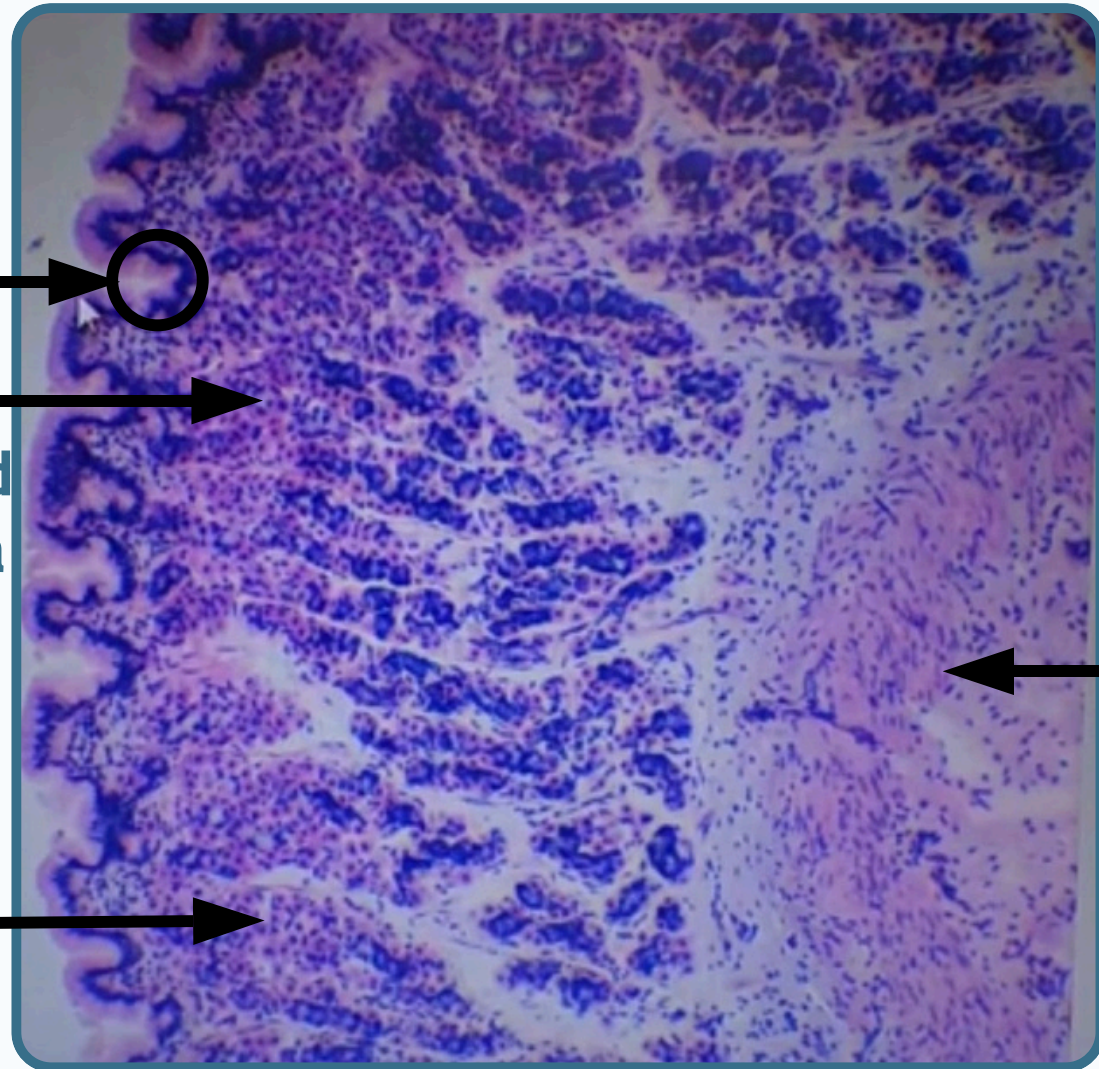
Inner Oblique

Middle Circular

Outer Longitudinal



“Muscularis”



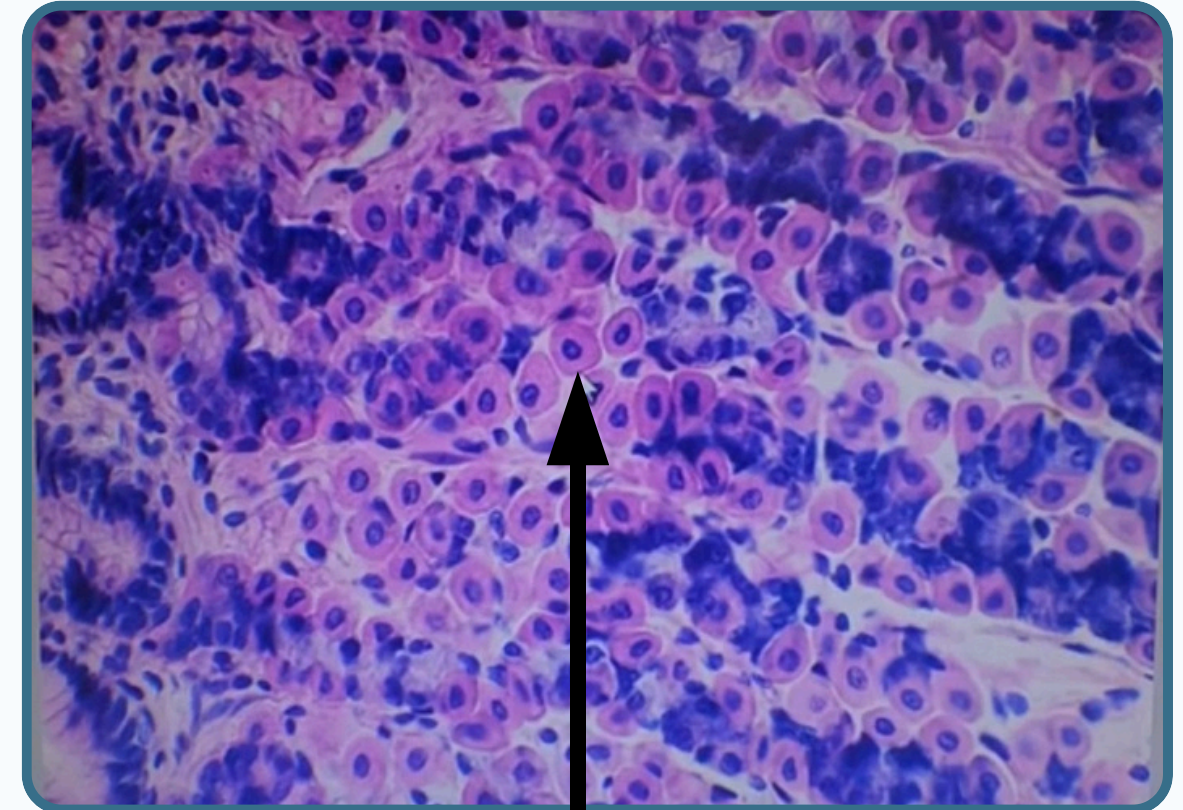
Gastric pits

Gastric gland
Simple tubular gland
Found within lamina
Propria

Mucosa of
stomach

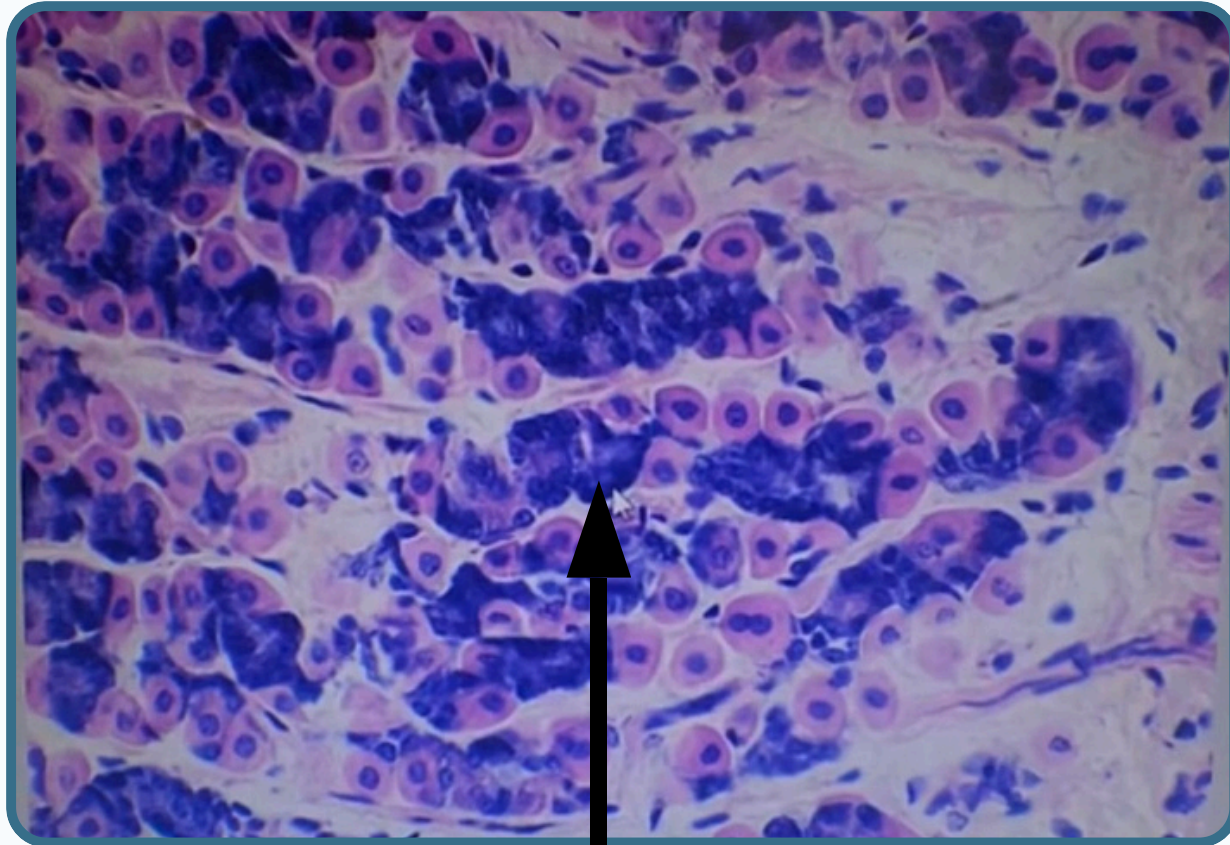
Muscularis
mucosae

Lining by **simple columnar epithelium**
*the epithelium invagination into the
lamina propria forming gastric pits



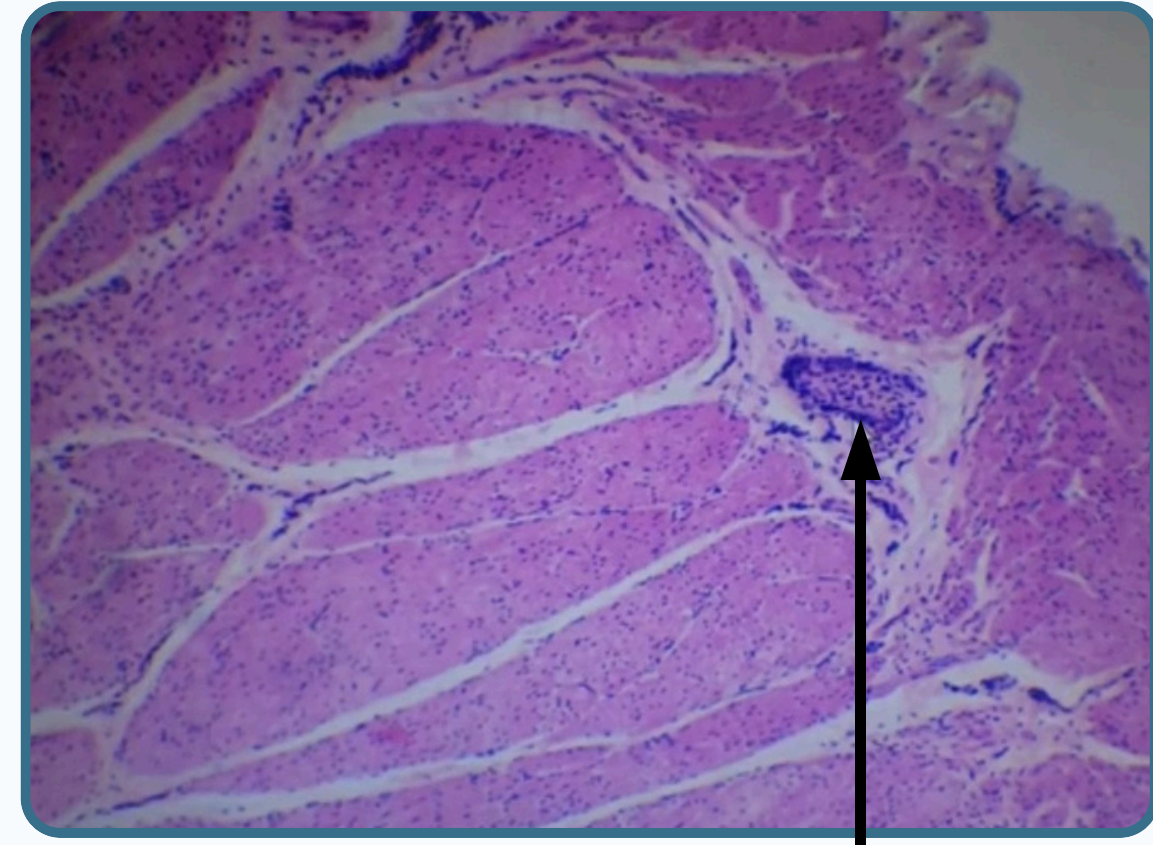
Parietal cells

- Have round pyramidal shape Spherical
- Centrally placed nucleus Has intensely acidophilic granules abundant mitochondria Produce HCL and secrete intrinsic factor



Chief (zymogen) cell

- Found in the lower portion of the gastric gland
- Have all the characteristics of the active protein secreted cells
- Have basophilic secretory granules contain Pepsinogen
- Also secreted gastric lipase

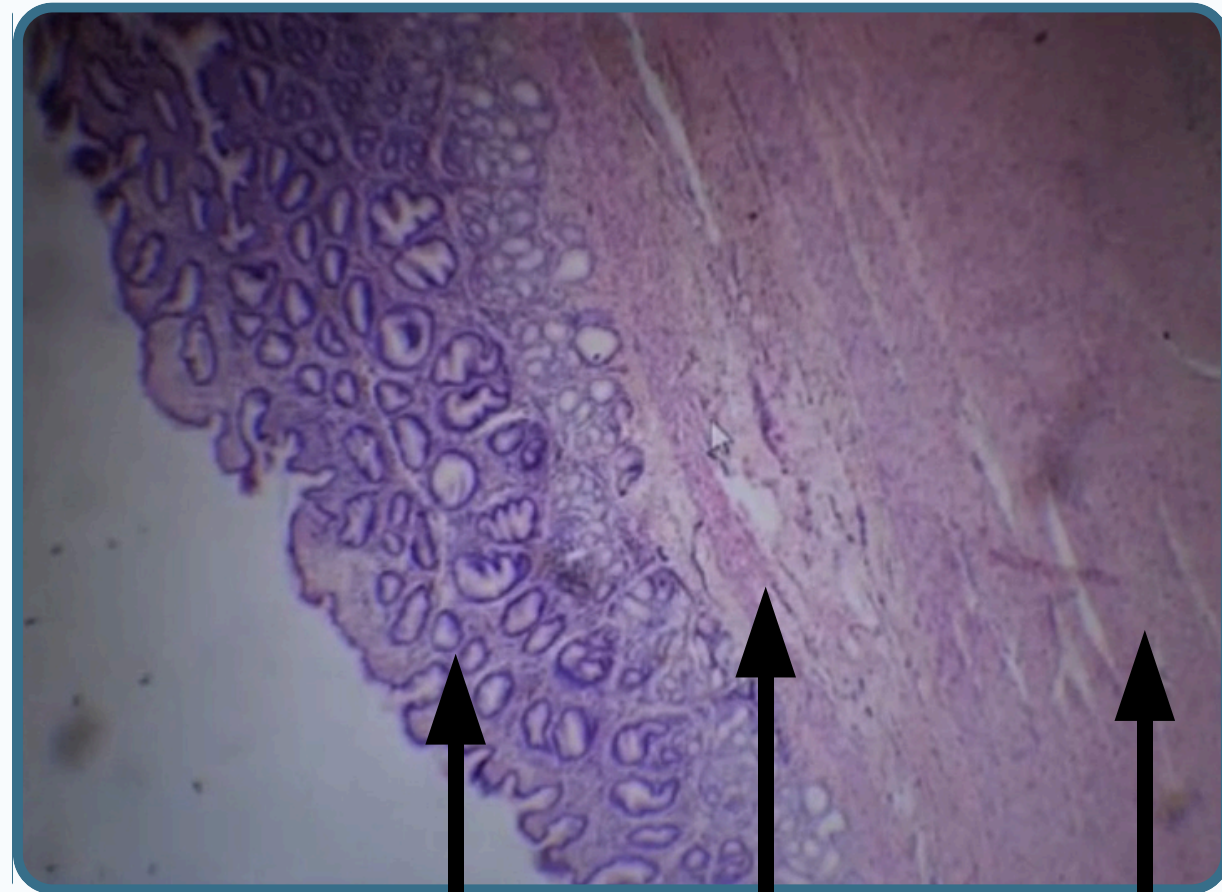


Myenteric plexus

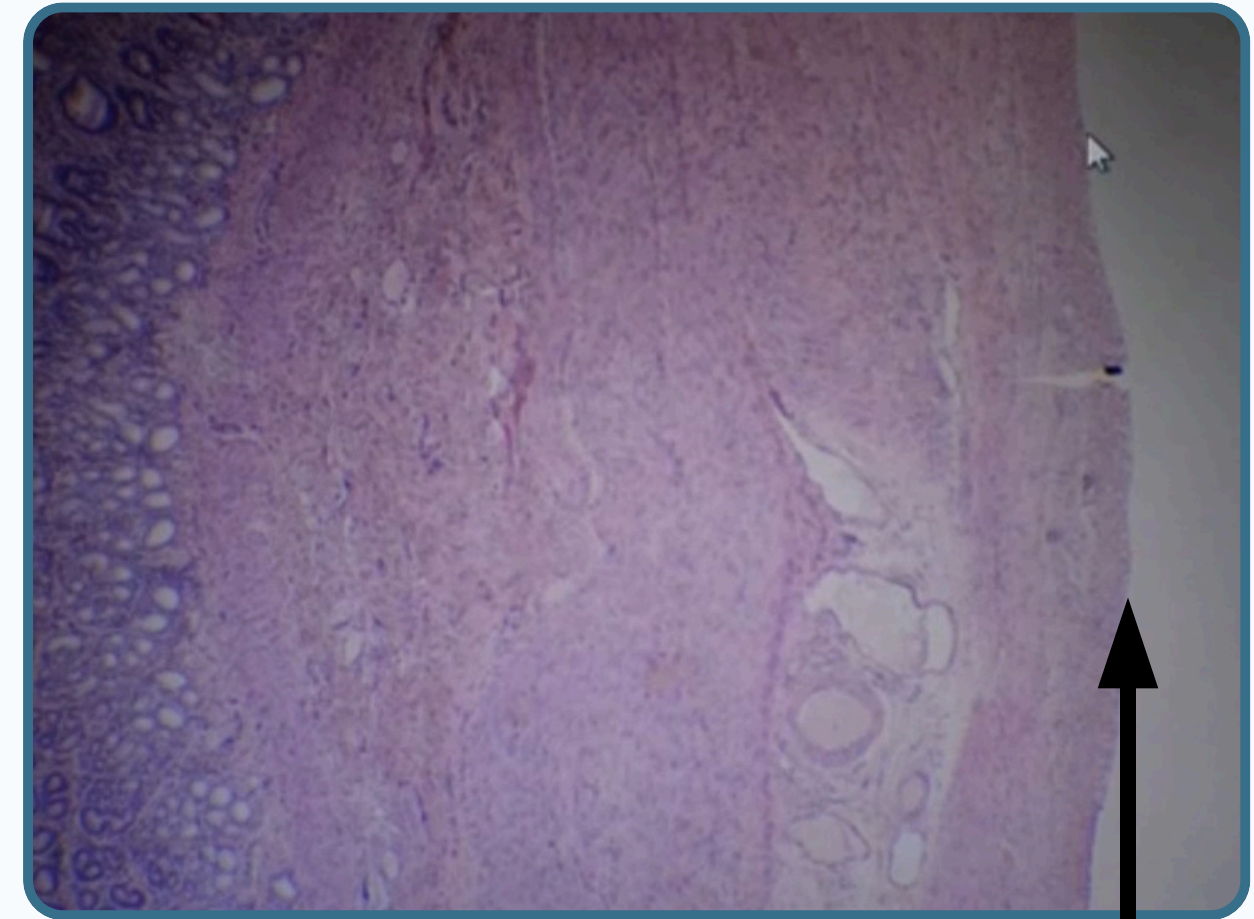
Within the CT between the muscularis



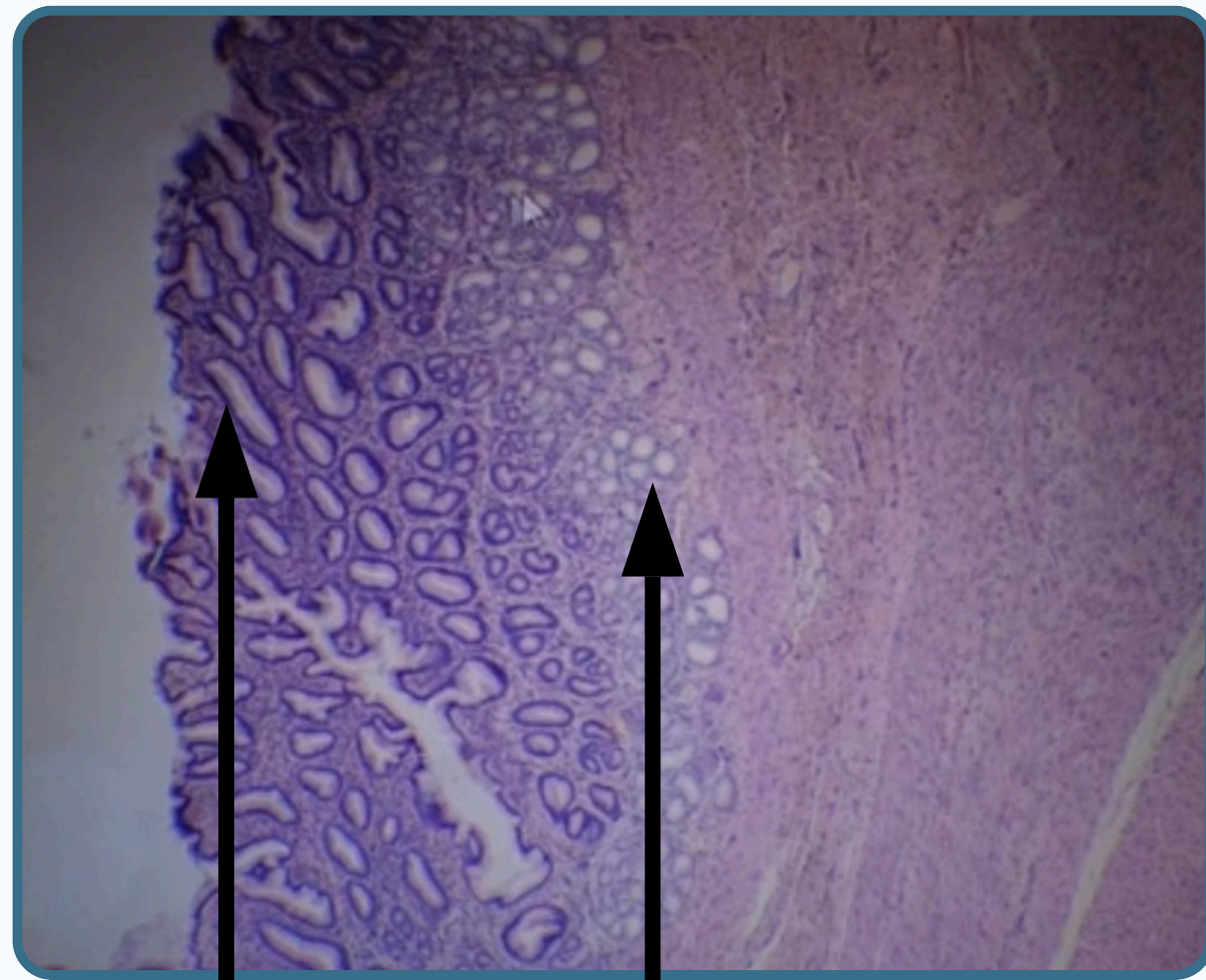
Pyloric region



Mucosa Sub-mucosa Muscularis



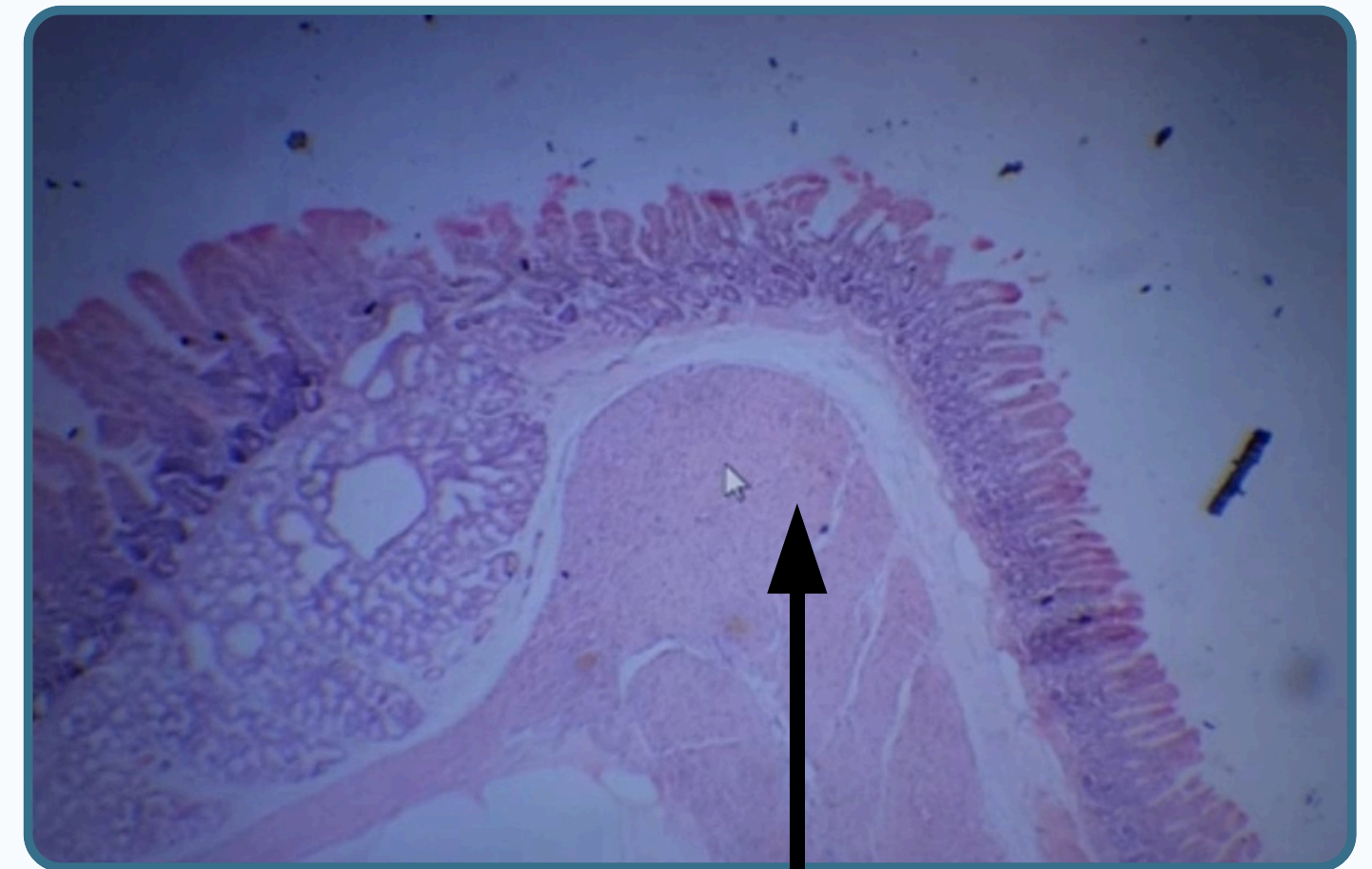
Thin serosa



Long Gastric pits

Pyloric gland

- Secrete only mucus
- Tubular gland branching into coil secretory portion

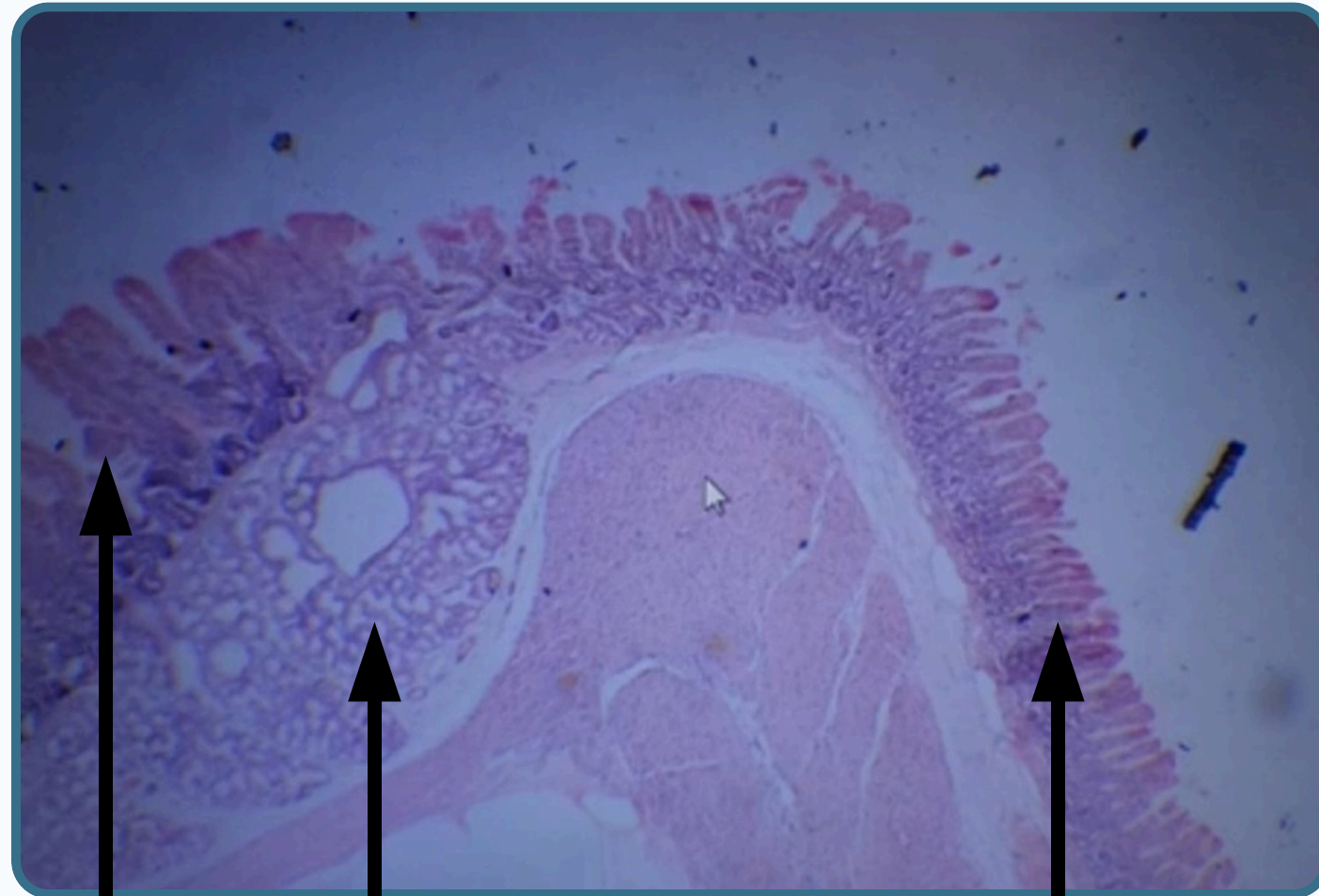


Pyloric sphincter

Thickening of the middle muscular layer



Gastroduodenal junctions

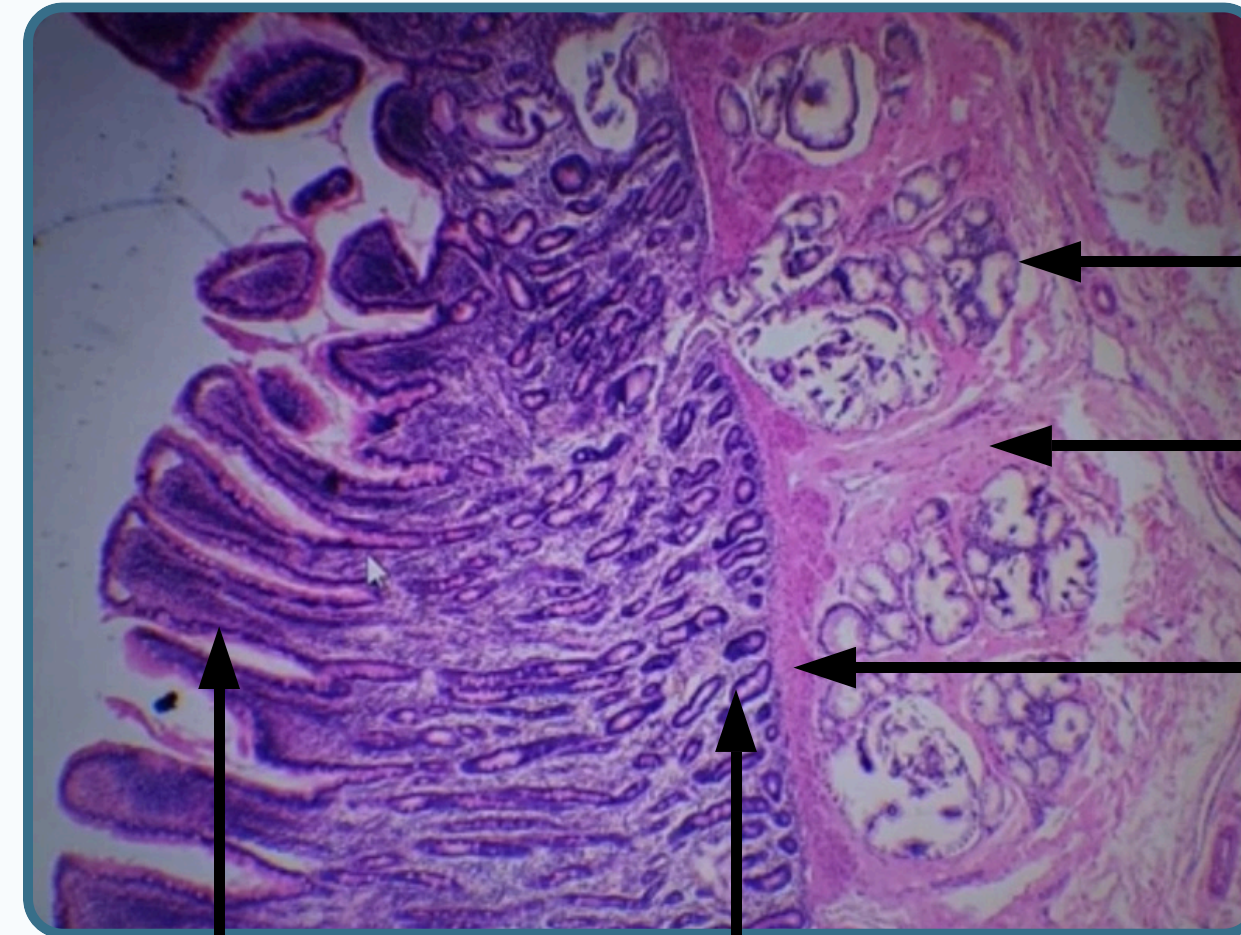


Duodenum

Brunners Gland Secret alkaline mucus

Pyloric region of the stomach

Duodenum



Brunners Gland

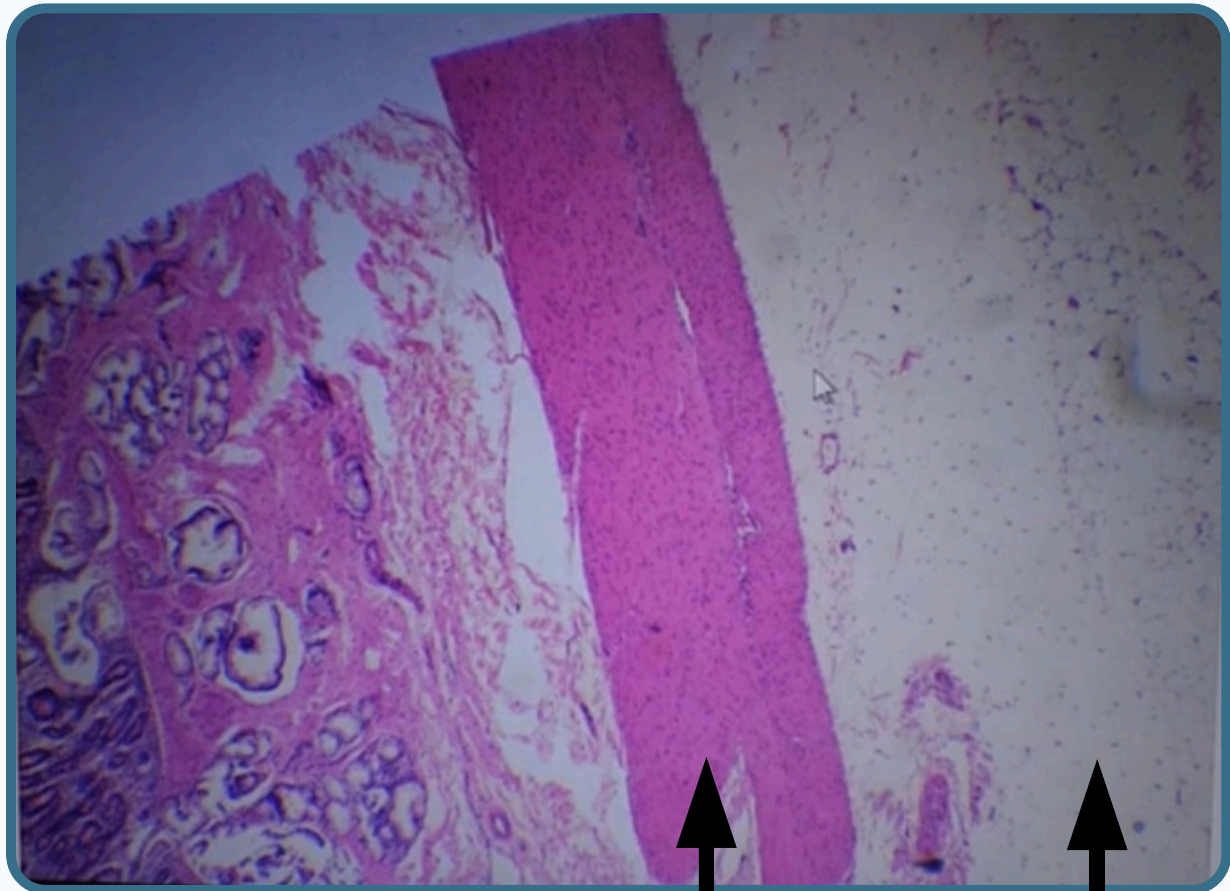
Sub-mucosa

Muscularis mucosae

Villa

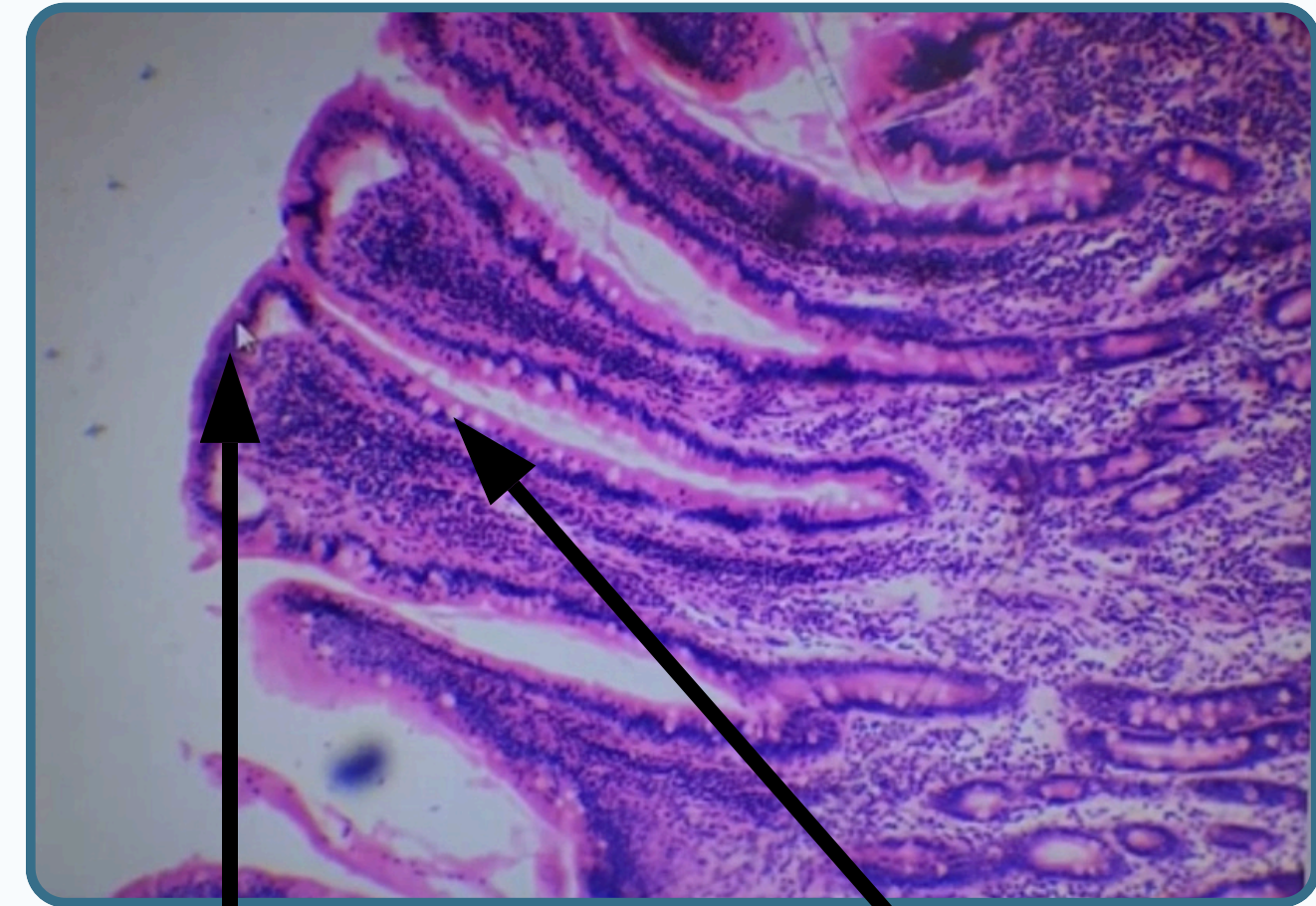
Intestinal gland Found within lamina propria

- Mucosal outgrowth
- Leaf like projection
- Coverage by simple columnar epithelium With core of CT extend from lamina propria



Muscularis layer

Serosa



Epithelium (simple columnar epithelium)

their cells called enterocyte or absorptive cells each cells tall columnar cells with oval basal located nucleus

Goblet cells

- Ovoid cell
- appears empty
- Exocrine cells
- secret mucus



Jejunum



Serosa

Muscularis

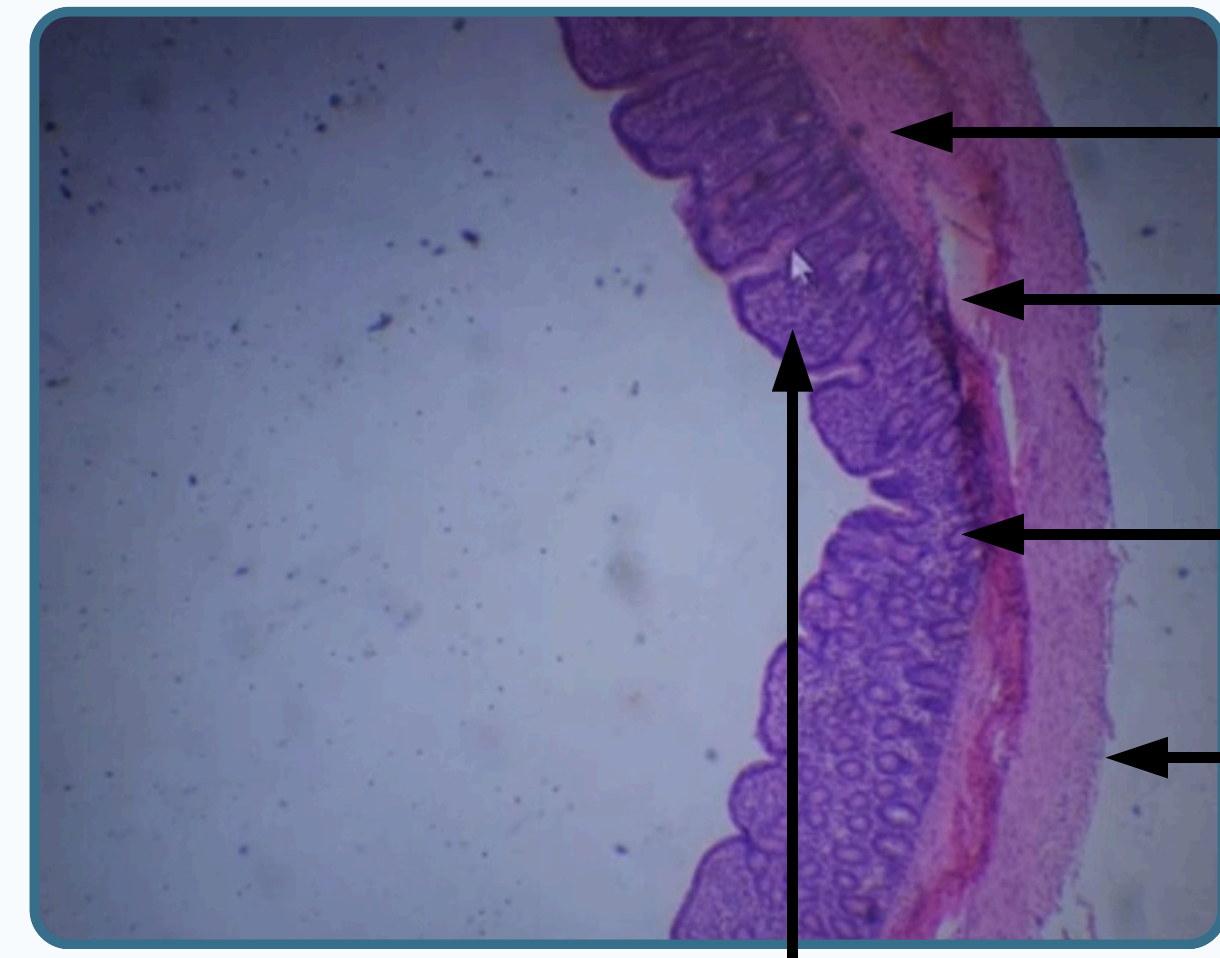
Sub-mucosa

Intestinal gland

Villi

Finger like projection Also have lining epithelium and core of CT

Ileum



Sub-mucosa

Muscularis

Intestinal gland

Serosa

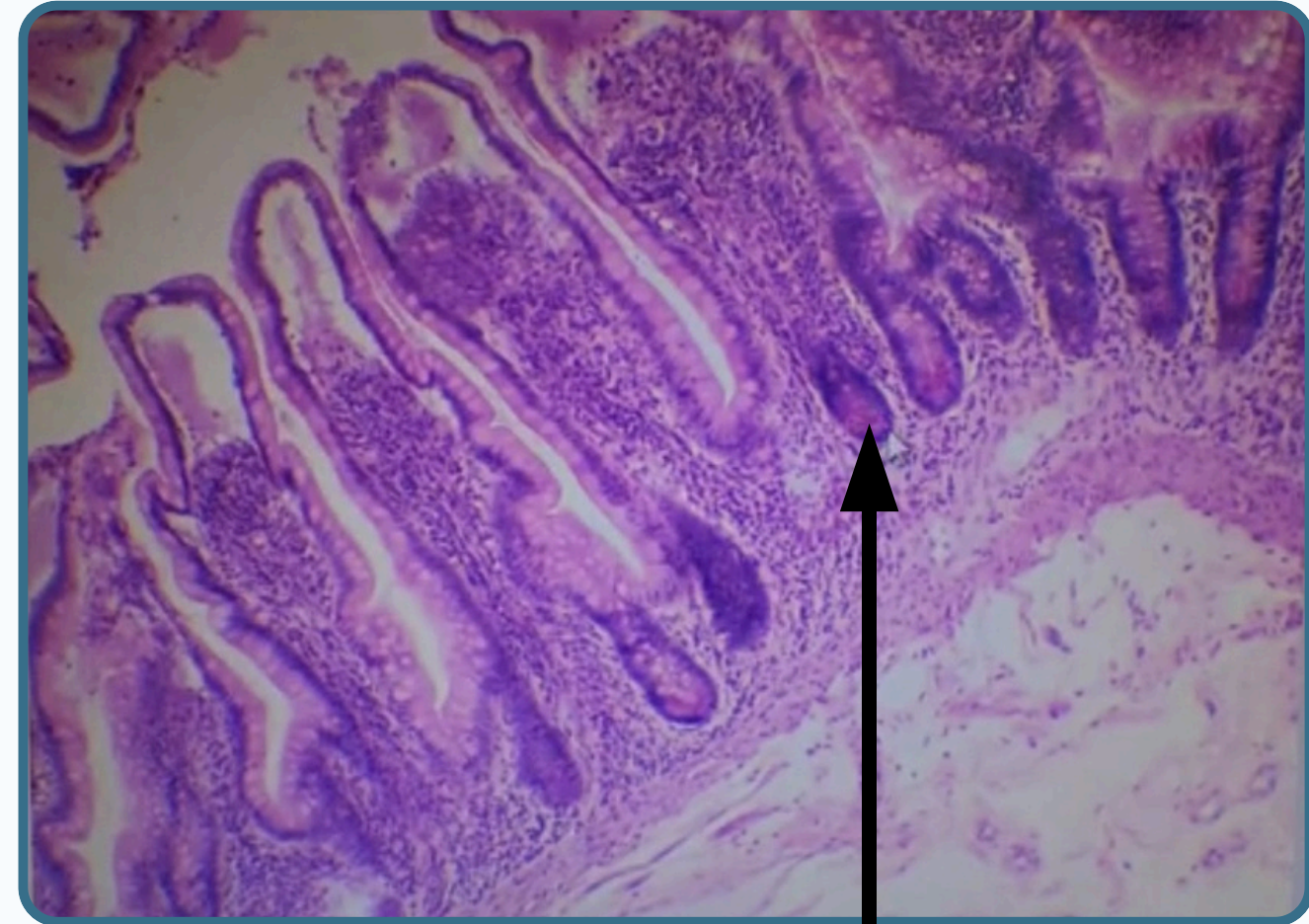
Villi

- Club shaped



Plicae circulares

- Consist of mucosa and sub-mucosa
- Well developed in jejunum



Paneth cells

- Found in the lower portion of the intestinal gland Each
- cells have eosinophilic granules and these granules contain (lysosomes-phospholipase A and defensin) to break the membrane of the microorganisms and bacterial wall

THANK YOU

EDITED BY



© ALL COPYRIGHT ARE RESERVED FOR
ARECH AND SATURN MEDIC

WWW.SATURNMEDIC.COM