

# HISTOLOGY PRACTICAL LECTURE - 14 -

## GIT PART 3

LARGE INTESTINE+LIVER+PANCREAS

EDITED BY



© ALL COPYRIGHT ARE RESERVED FOR  
ARECH AND SATURN MEDIC

[WWW.SATURNMEDIC.COM](http://WWW.SATURNMEDIC.COM)





# Large Intestine

## Muscularis Mucosa

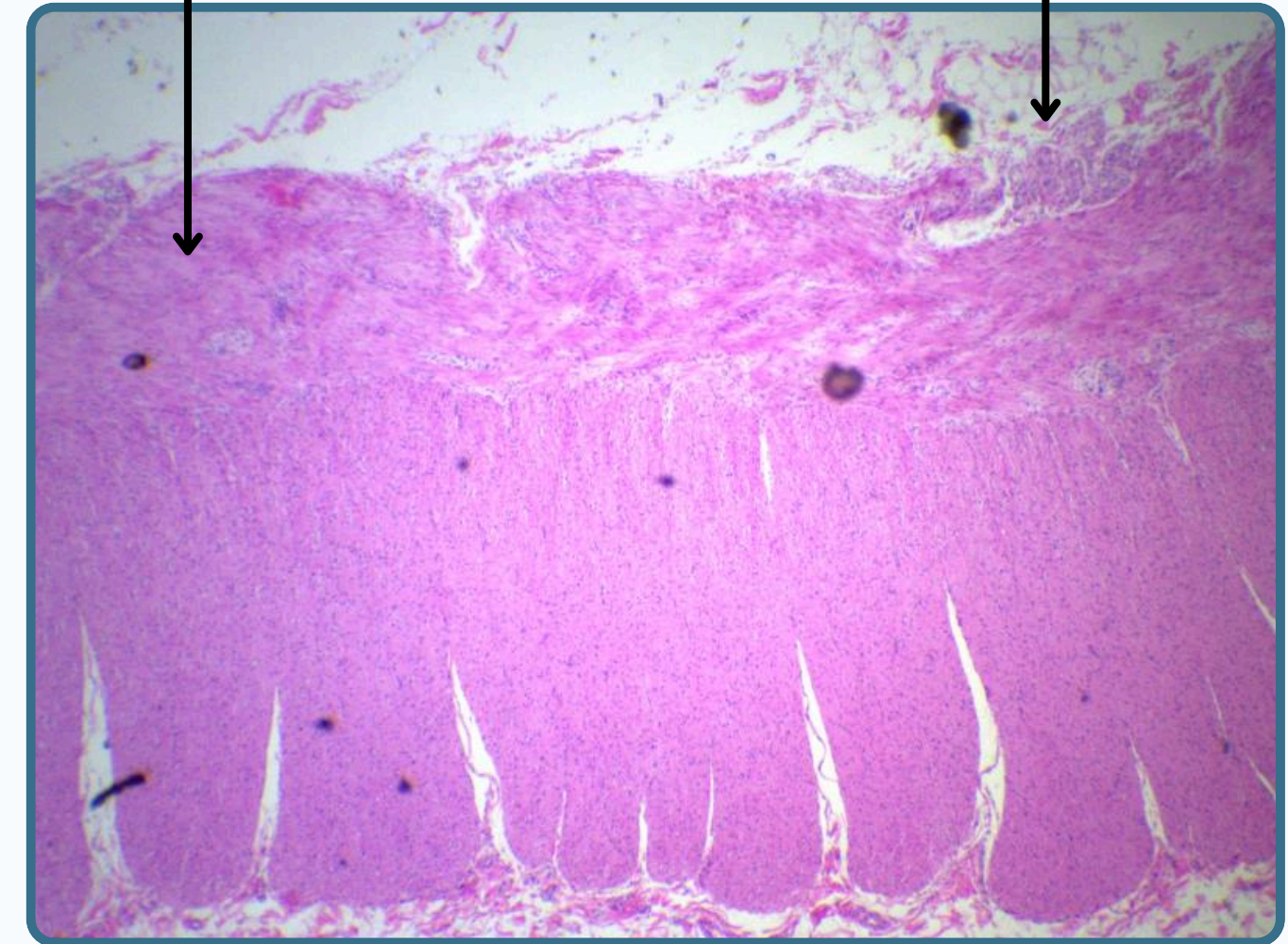
Stratified squamous non keratinized epithelium

## Muscularis Layer

## Outer Longitudinal Layer (Taenia Coli)

## Serosa

Sub-Mucosa



Lamina Propria

Mucosa

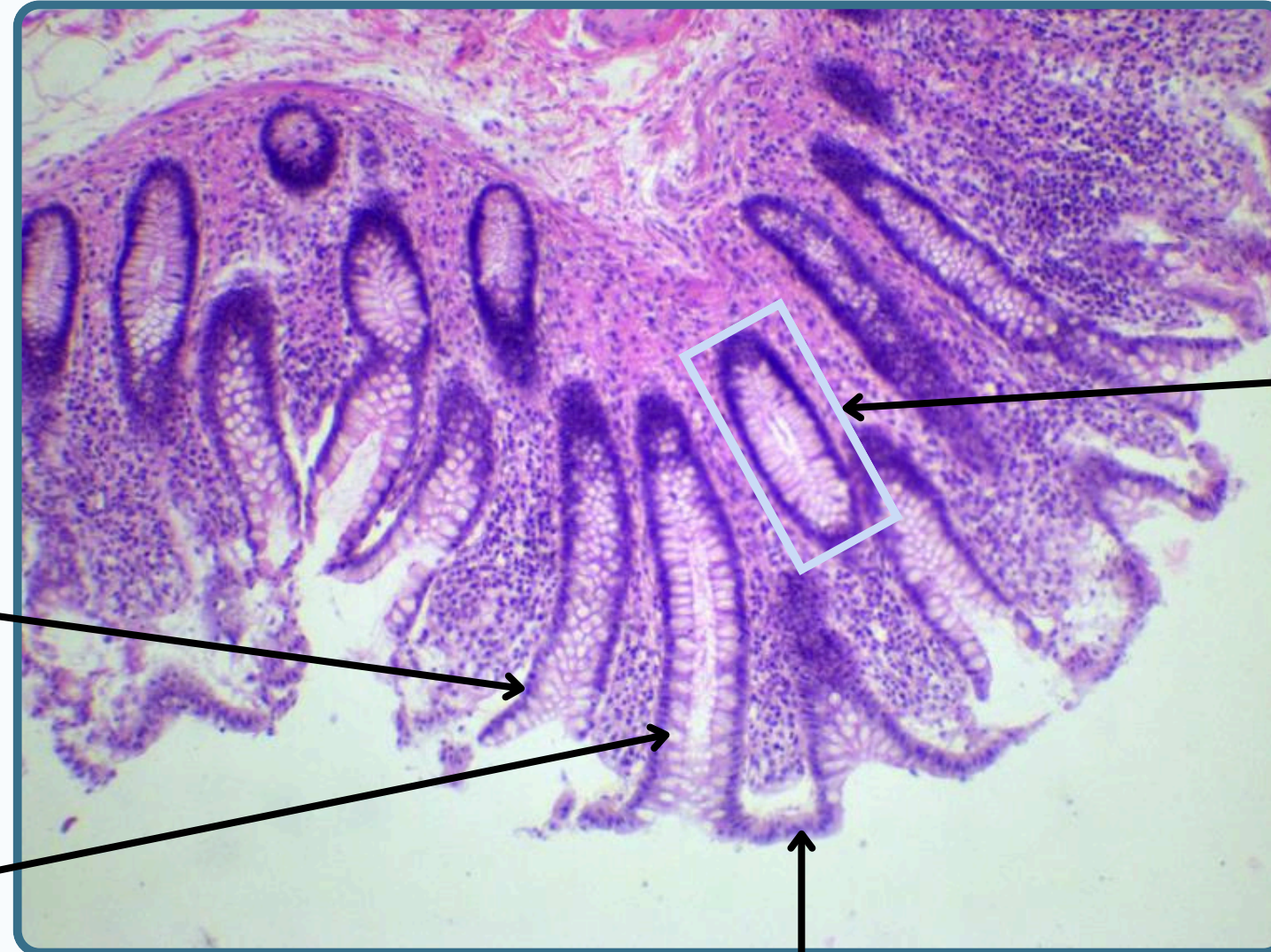
Lymphoid nodule

Stratified squamous non keratinized epithelium





## Large Intestine



Absorptive cells (colonocytes)

Goblet cells

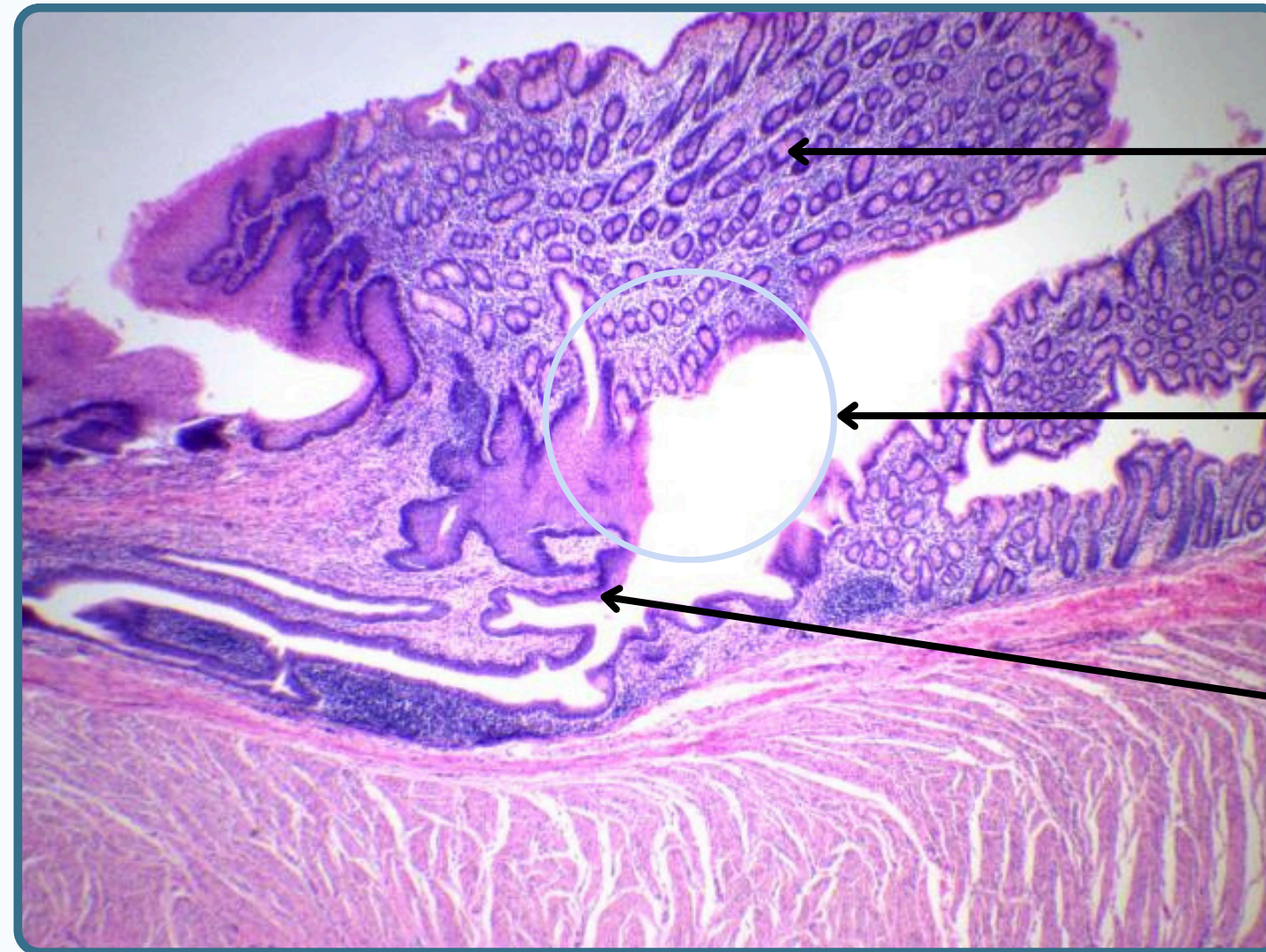
Simple Tubular Gland

Simple Columnar Gland





## Rectum



**Rectal Intestinal Gland**

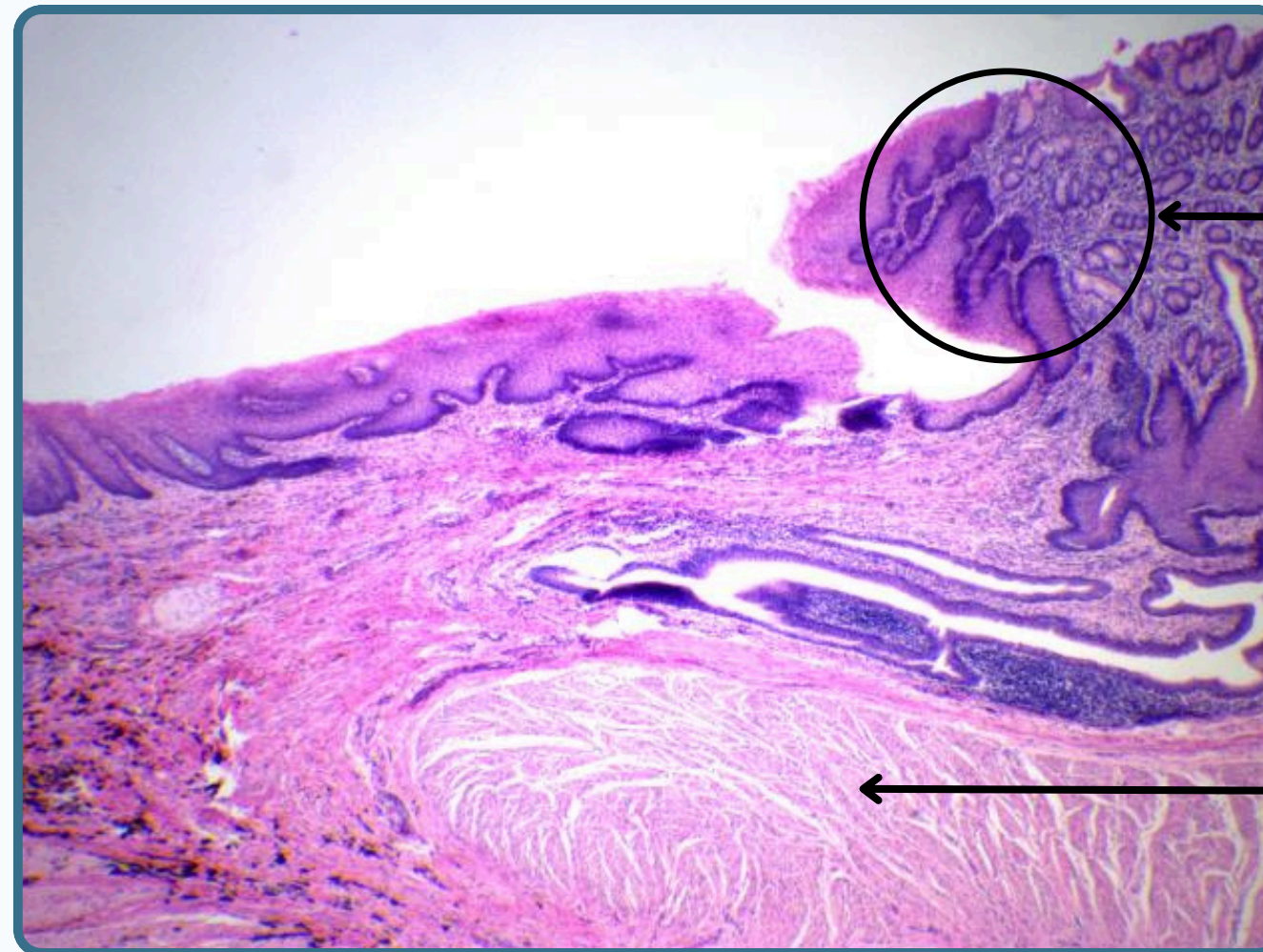
**Anorectal Junction**

**Stratified squamous epithelium**





## Rectum



### Anorectal Junction

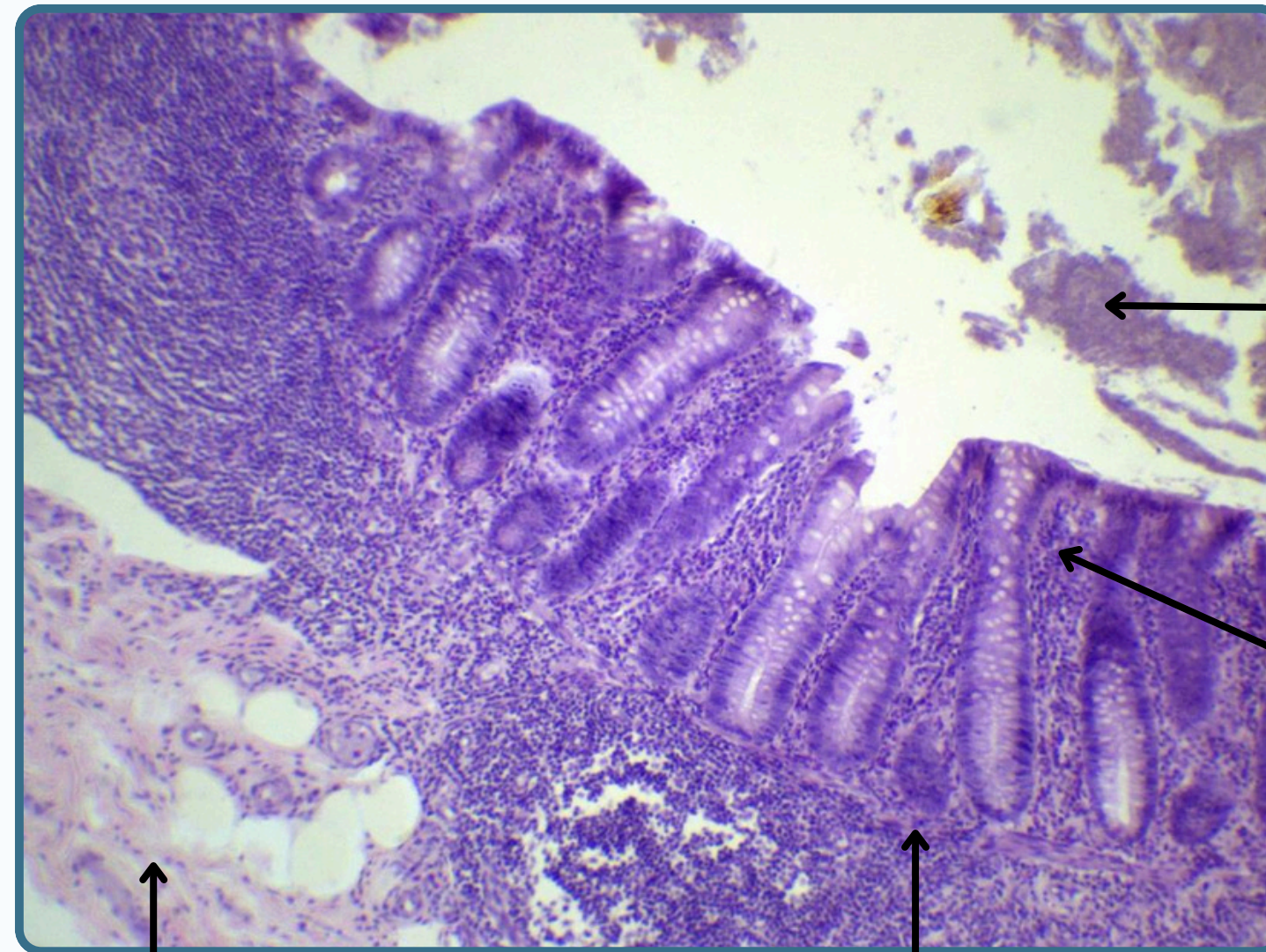
Simple columnar epithelium is replaced with stratified epithelium

### Internal Anal Sphincter





## Appendix



**Debris**

Is the main feature of Appendix

**Mucosa with intestinal gland**

**Submucosa**

**Lamina Propria**

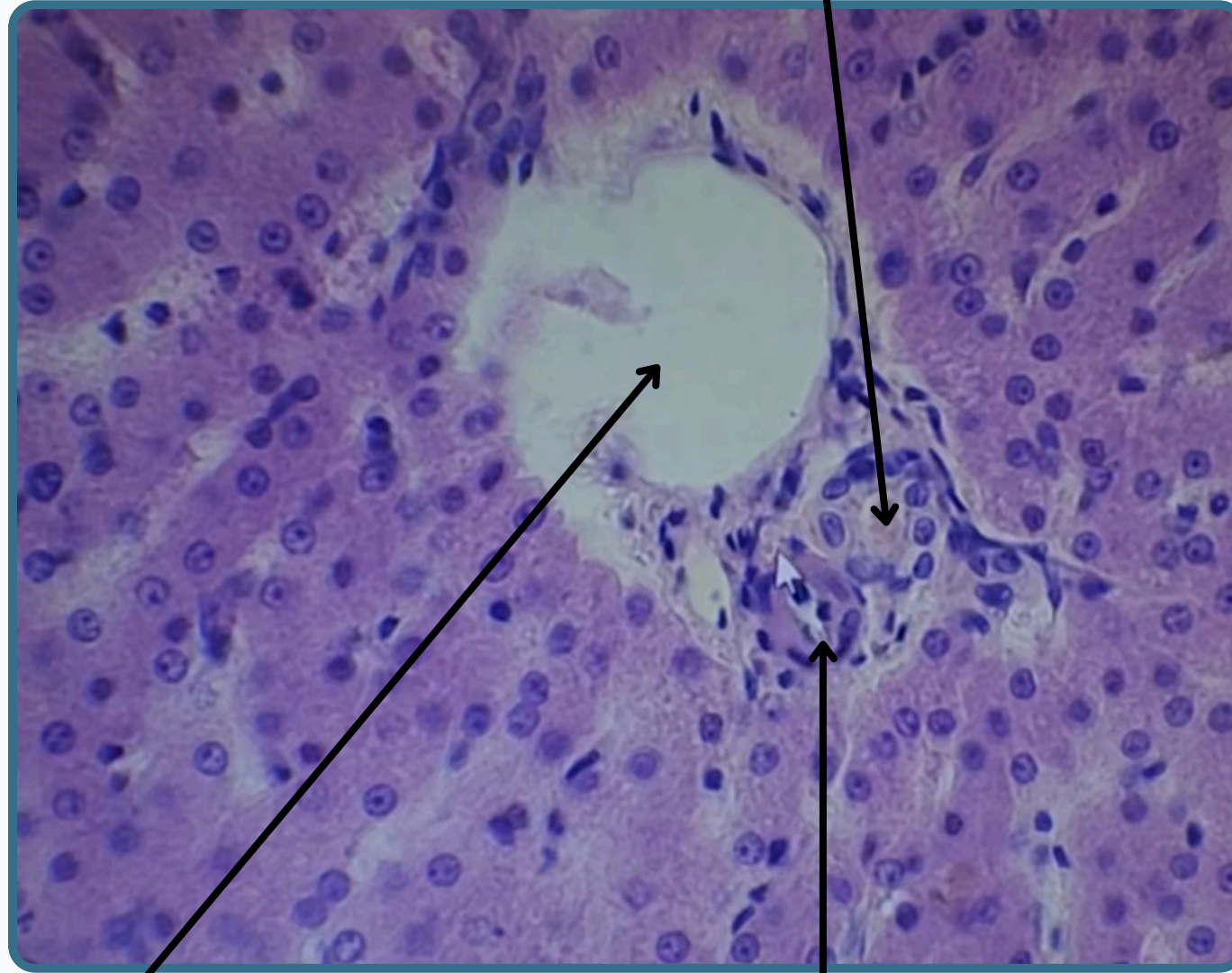




Liver

**Bile Ductule**

Branch of Hepatic Artery

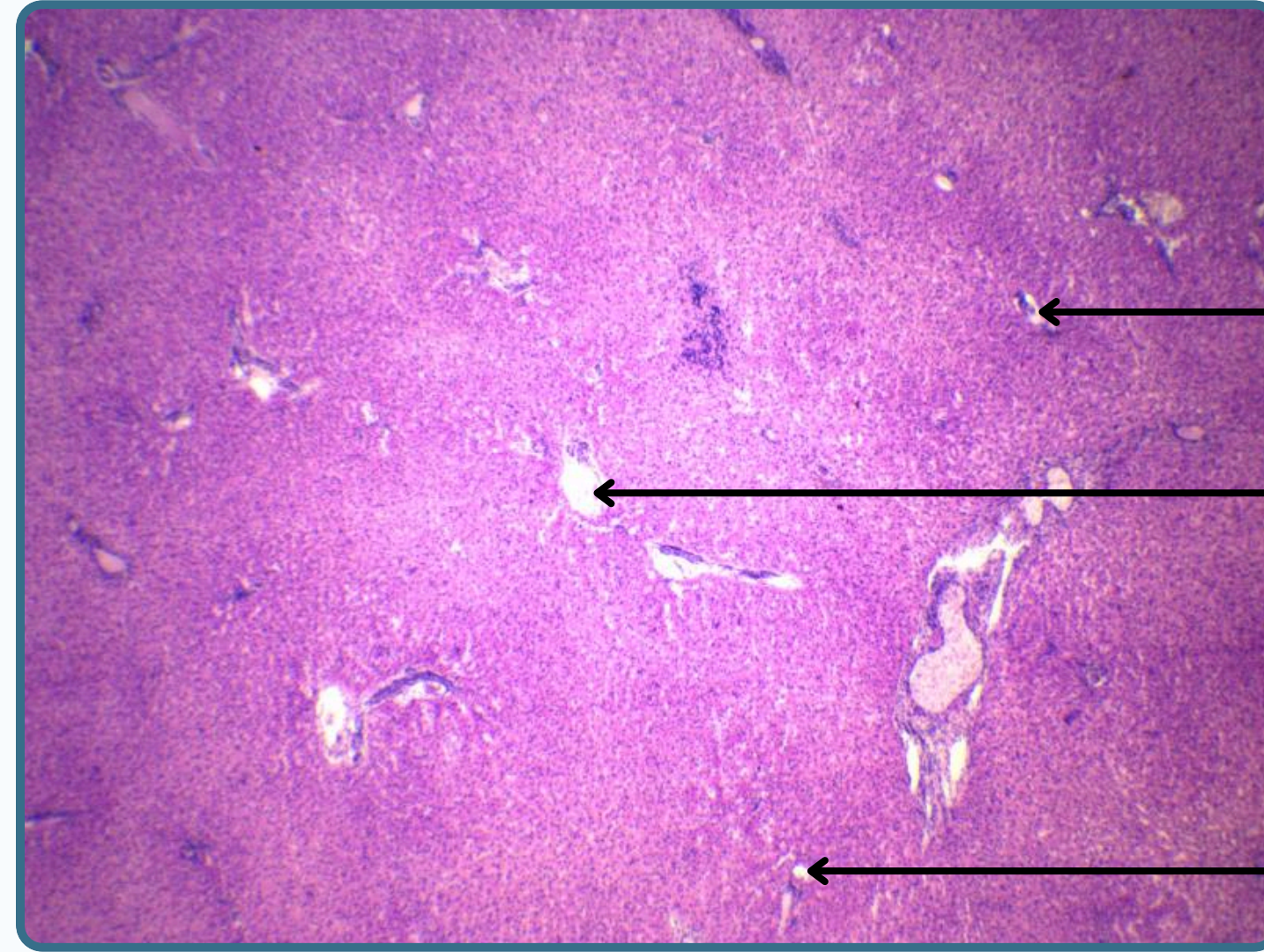


**Venule**

Branch of Portal Vein

**Arteriole**

Branch of Hepatic Artery



**Portal Area**

**Central Vein**

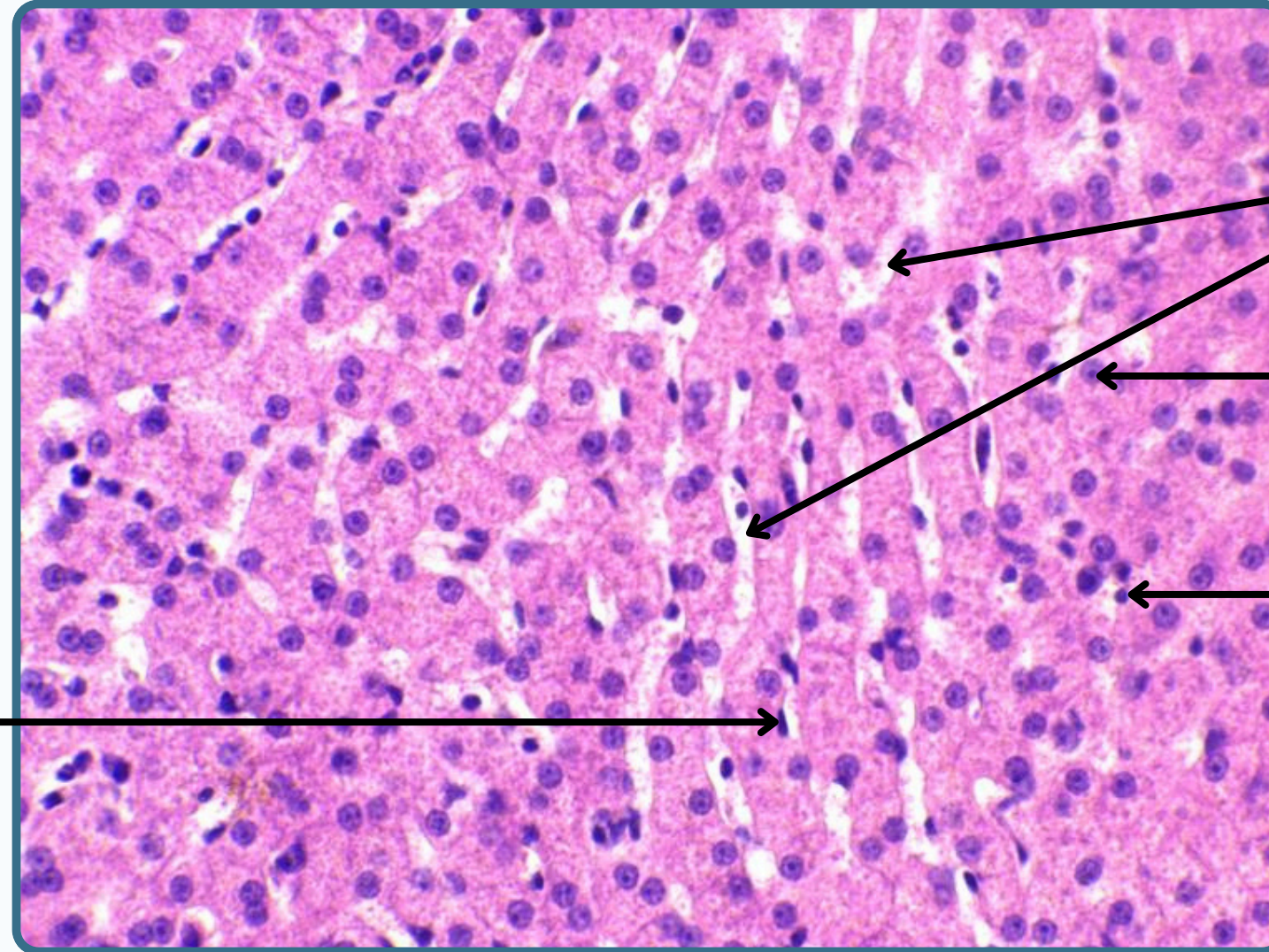
**Portal Area**





# GIT

## Liver



Liver Sinusoid

Hepatocyte

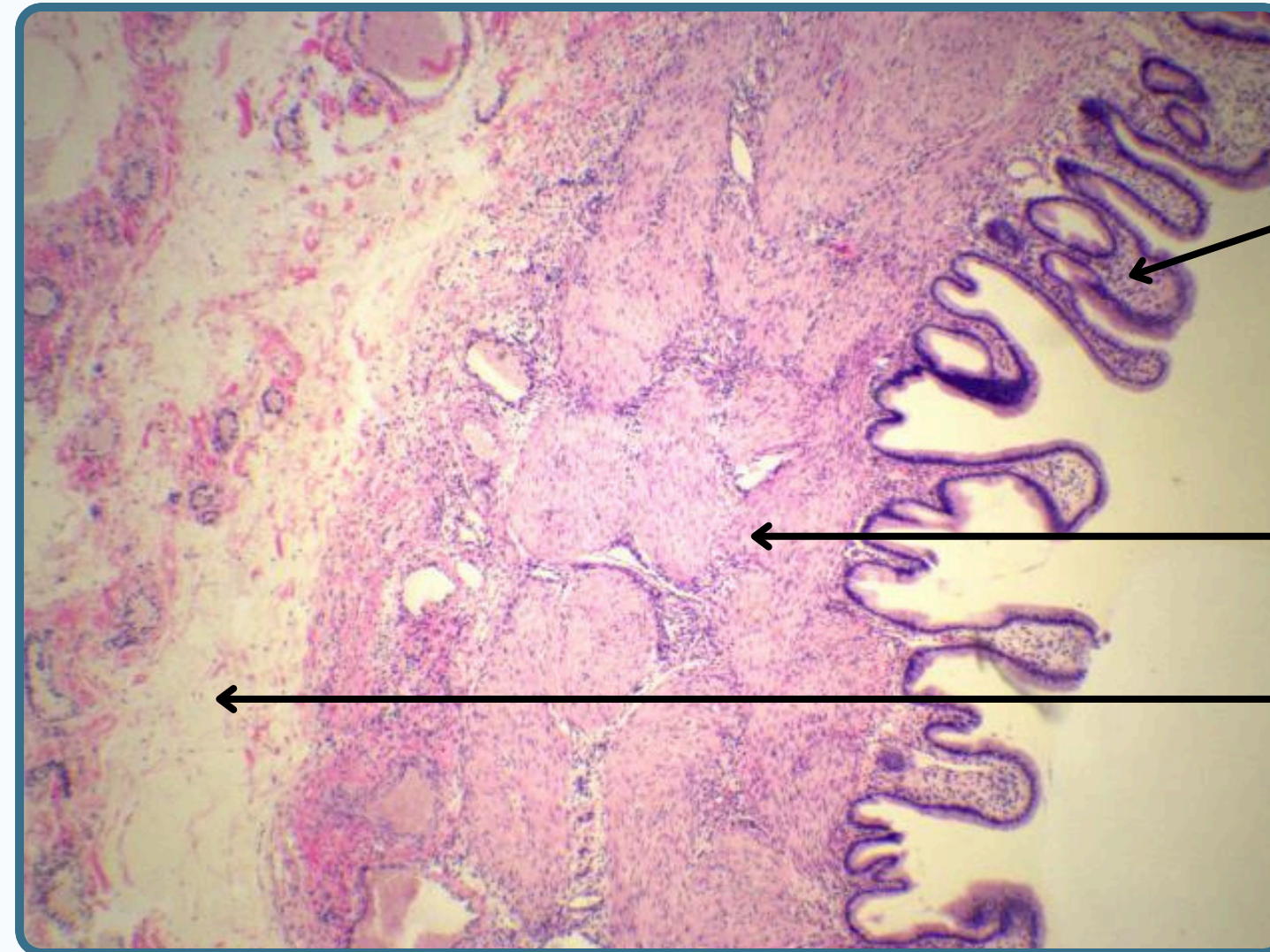
Macrophage (Kupffer cell)  
Dark Stain

Nuclei of Fenestrated  
endothelial cell





## Gallbladder



### Mucosae

Has foldings when  
Gallbladder is empty

### Muscularis Layer

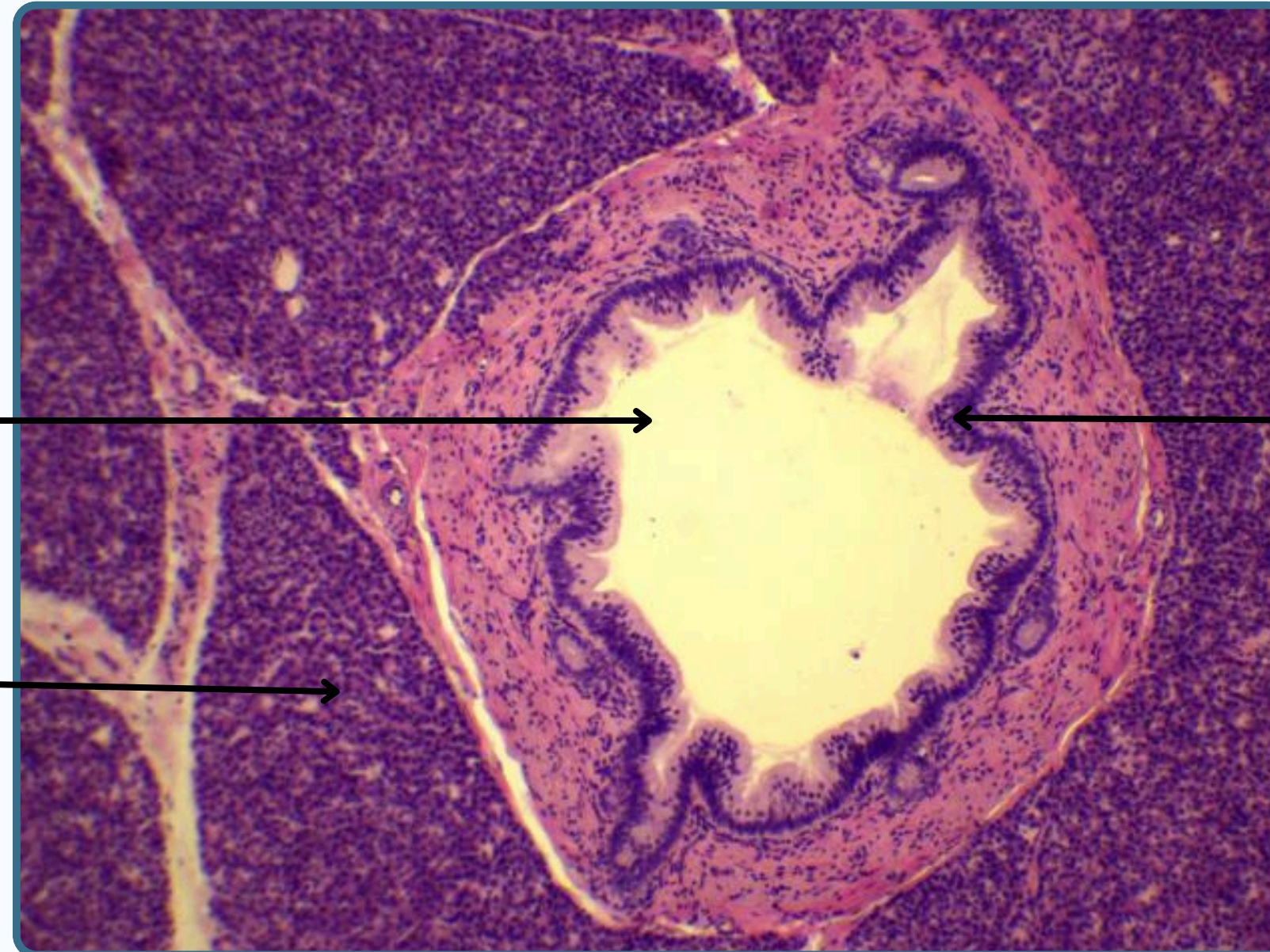
### Adventitia

Thick Layer

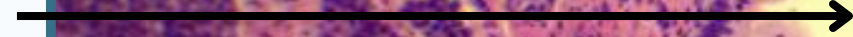




Pancreas



Major Pancreatic Duct



Lining Epithelium



Is stratified squamous  
and pseudostratified

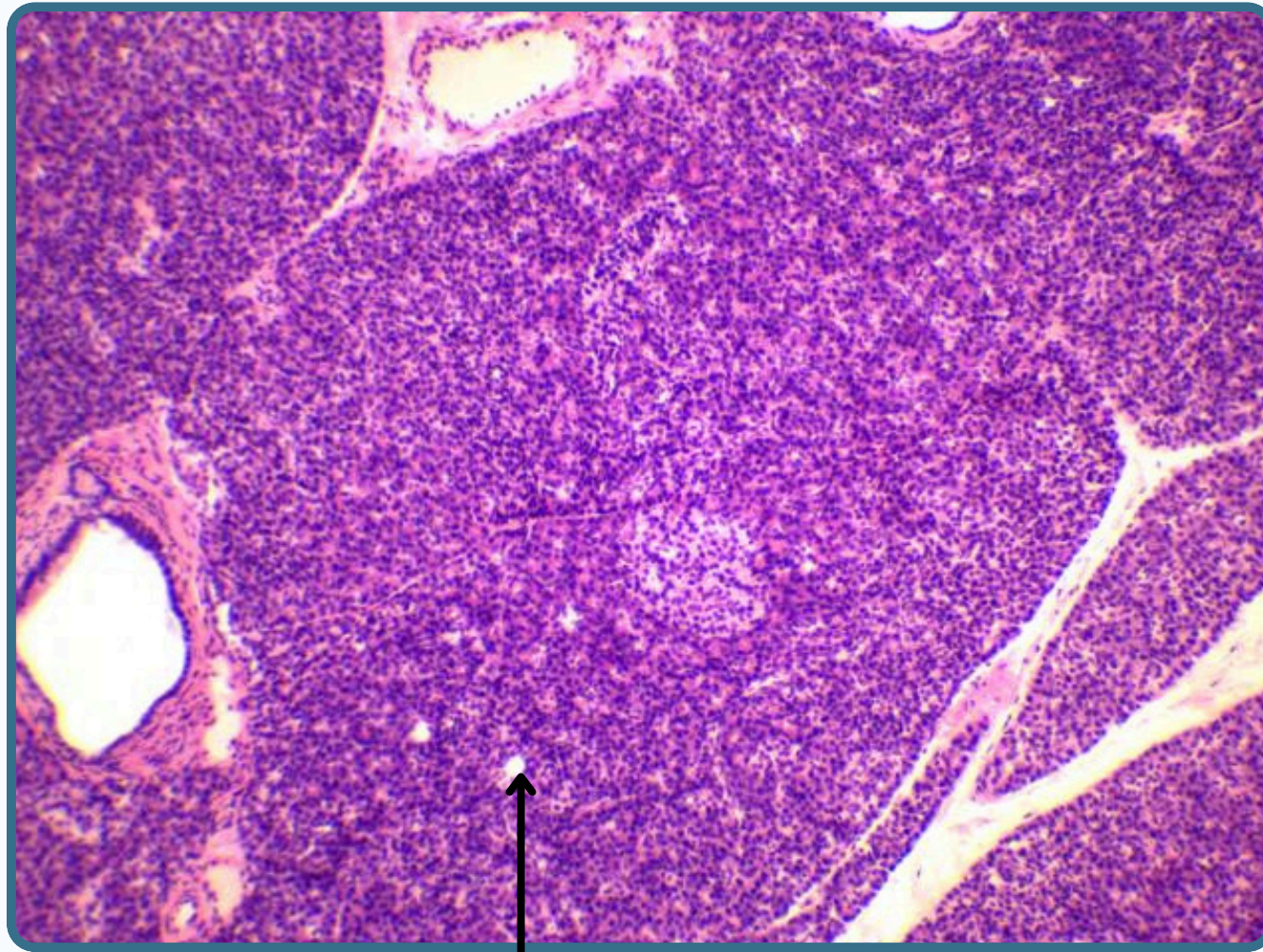
Exocrine Portion of Pancreas





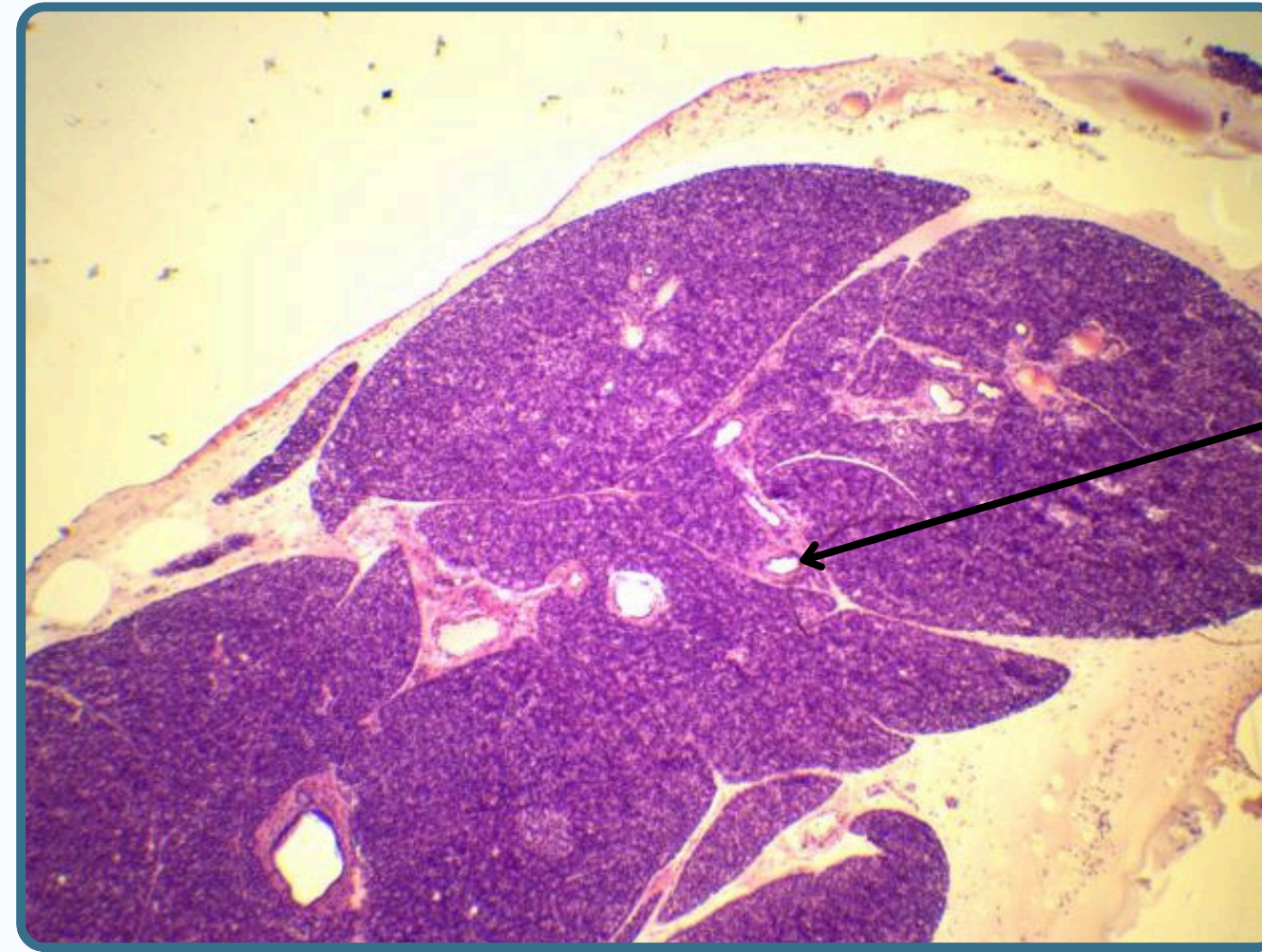


## Pancreas



### Intercalated Duct

- Lined by Simple Cuboidal
- Has a narrow Lumen



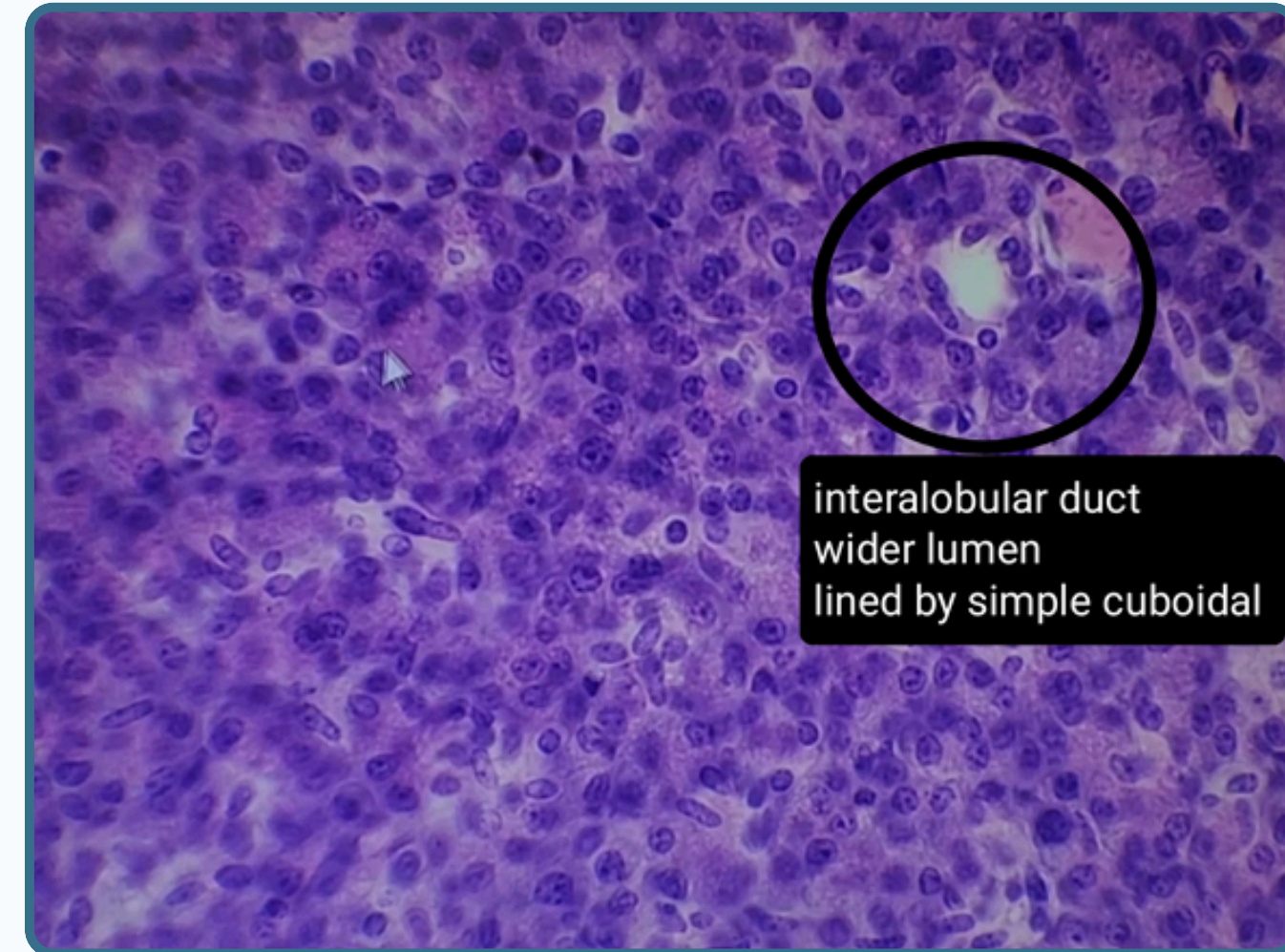
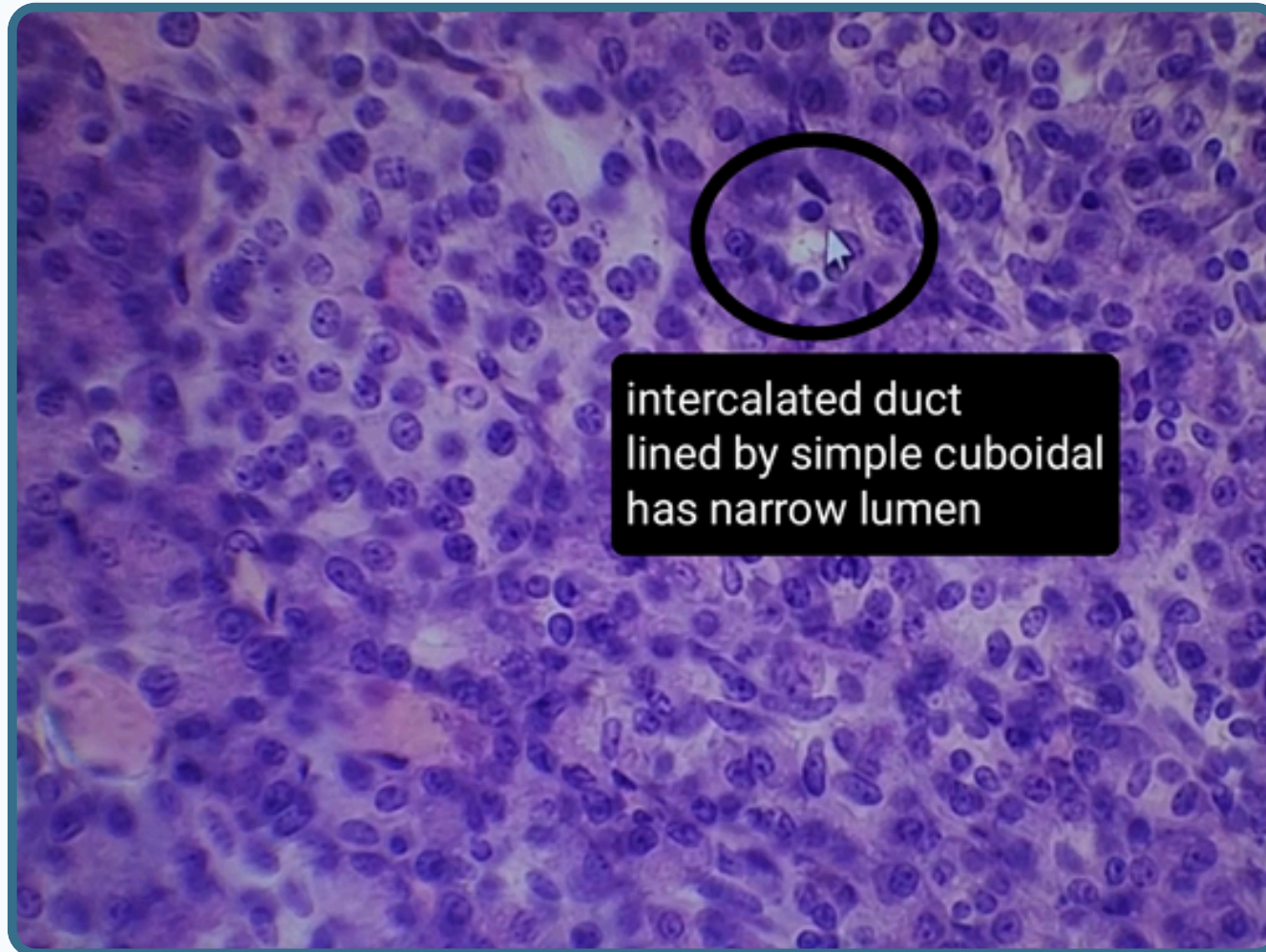
### Interlobular Duct

Located between lobes of pancreas  
Lined by cuboidal epithelium





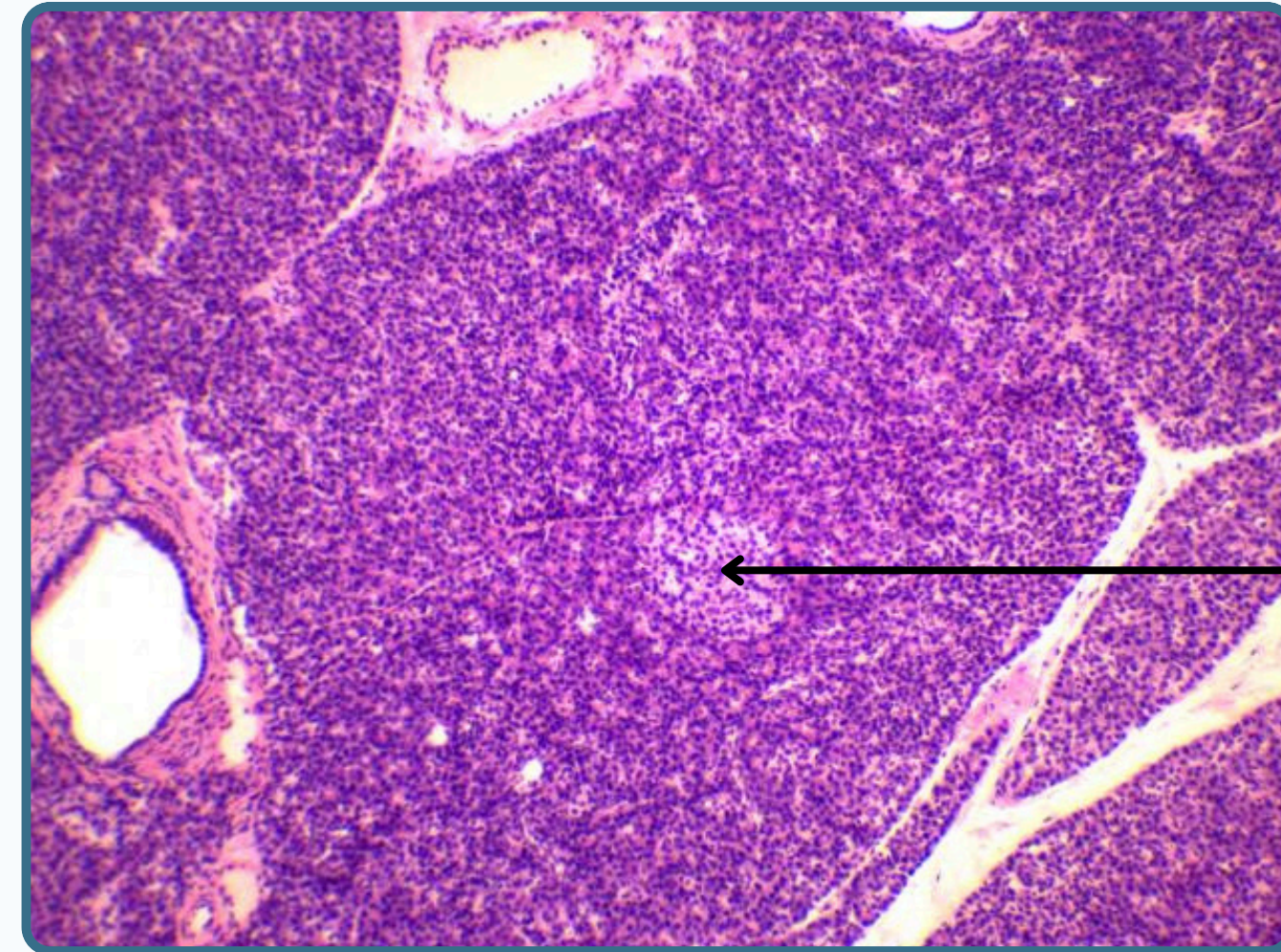
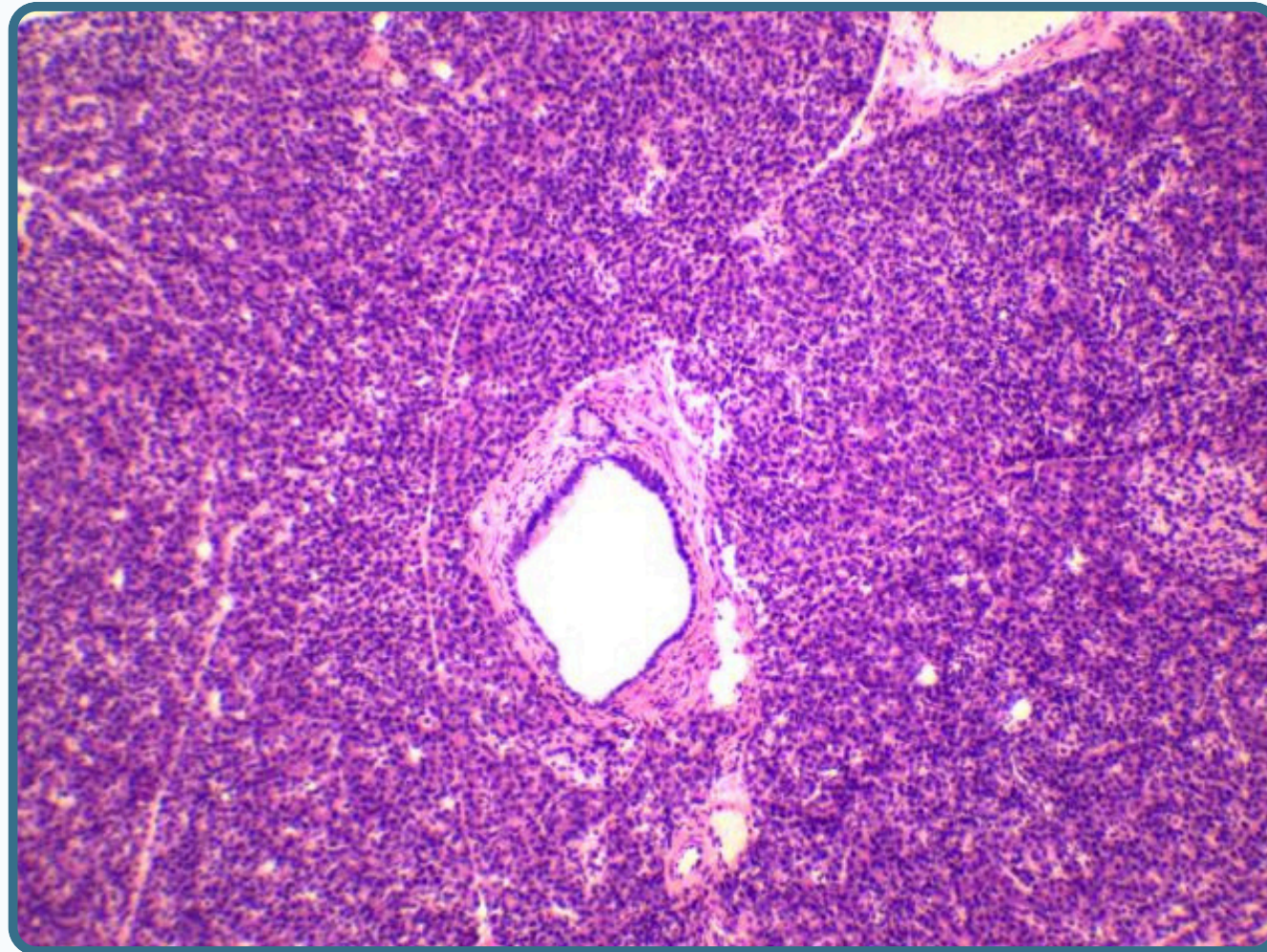
## Pancreas







## Pancreas



**Endocrine  
Portion**

- Each acinus consist of serous cells arranged around small lumen
- Has basal located nucleus with apical zymogenic granules



# THANK YOU

EDITED BY



© ALL COPYRIGHT ARE RESERVED FOR  
ARECH AND SATURN MEDIC

[WWW.SATURNMEDIC.COM](http://WWW.SATURNMEDIC.COM)