

HISTOLOGY PRACTICAL LECTURE - 18 -

MALE REPRODUCTIVE SYSTEM

EDITED BY



© ALL COPYRIGHT ARE RESERVED FOR
ARECH AND SATURN MEDIC

WWW.SATURNMEDIC.COM



Male Reproductive System

Section In The Testes

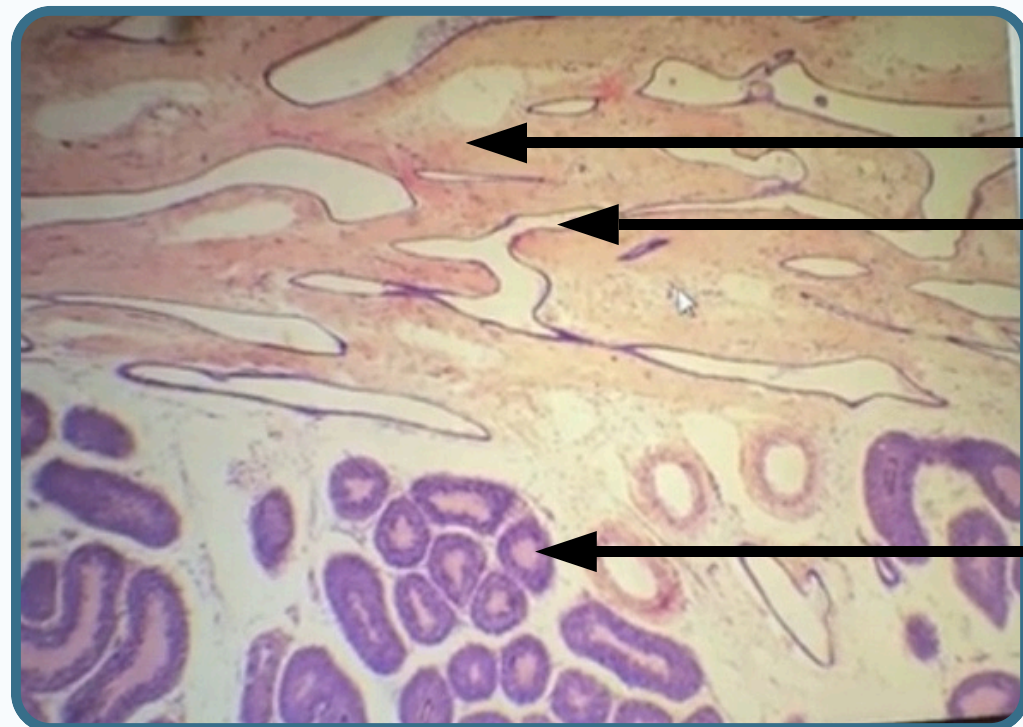
Retitestis

Simple cuboidal epithelium

Striated segment
lining by simple cuboidal epithelium some time only Sertoli cells

Epithelial lined Chanel

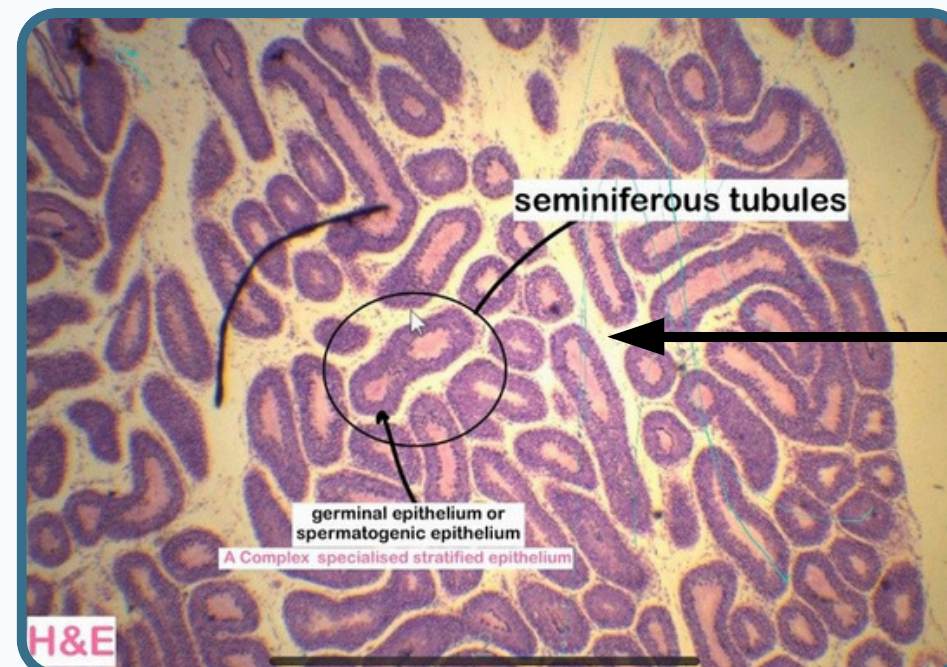
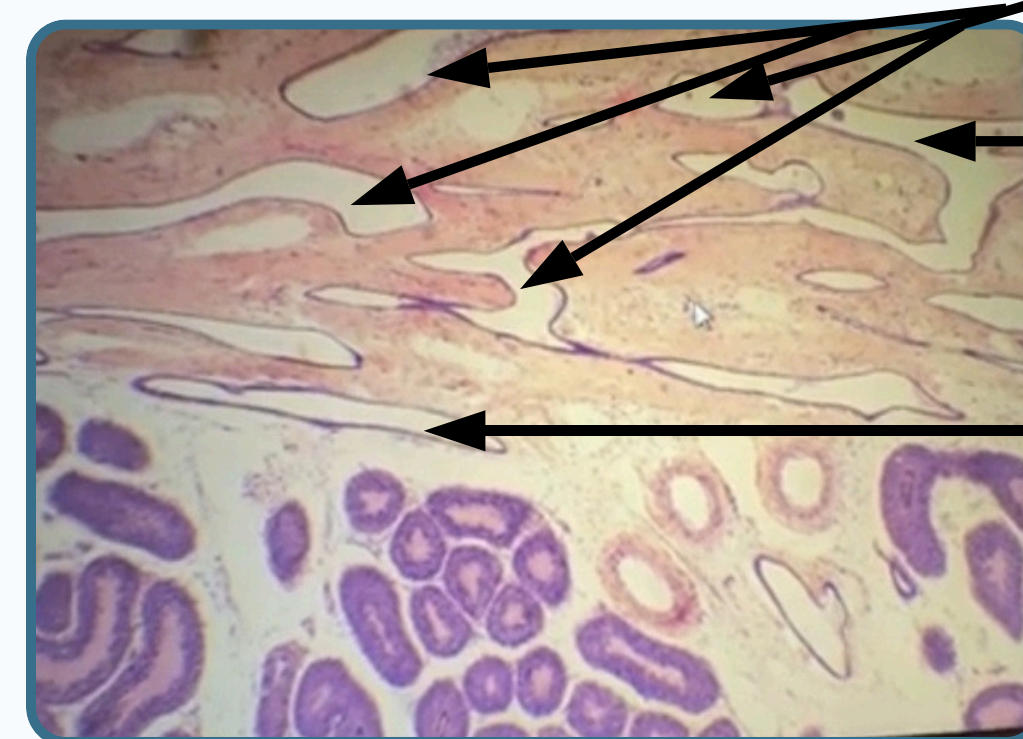
lining by simple cuboidal epithelium to form the retitestis



Mediastinal testes region
Strait tubule

Connect the seminiferous tubules to the retitestsis

Seminiferous tubules

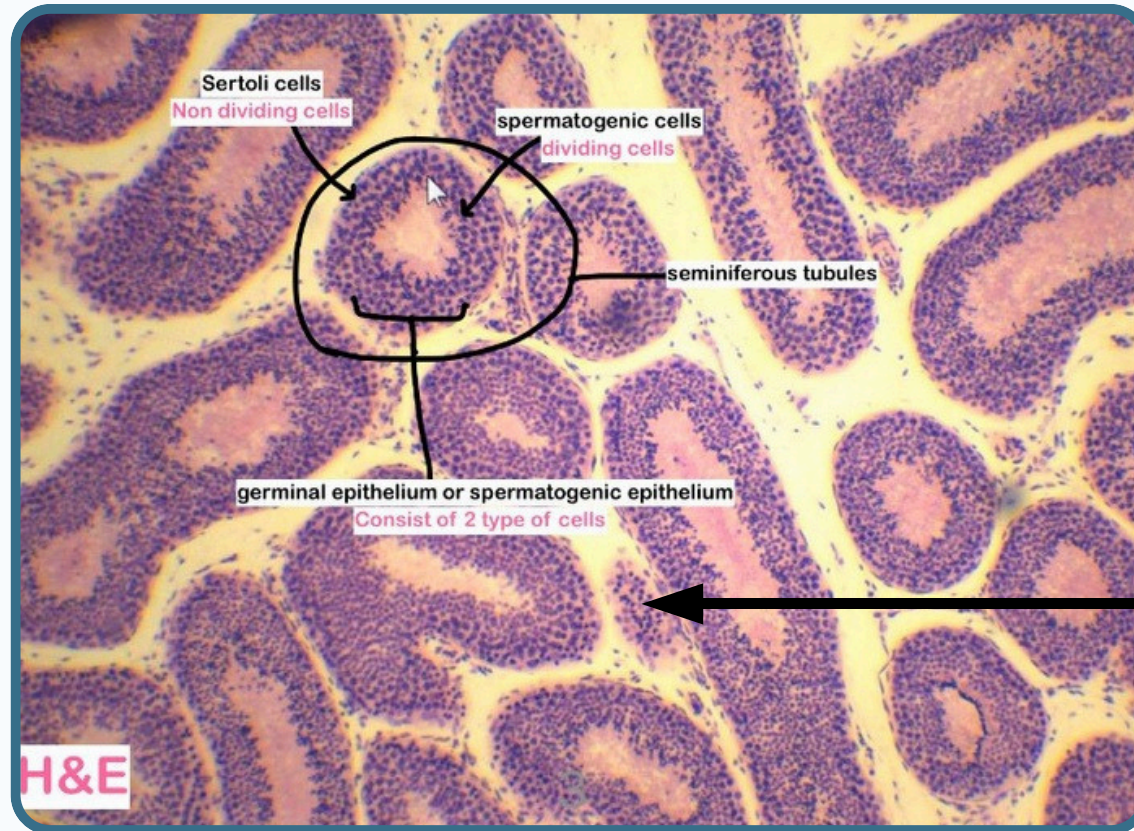


Interstitial tissue

(connective tissue+fibroblast+blood vessels and Leydig cells)

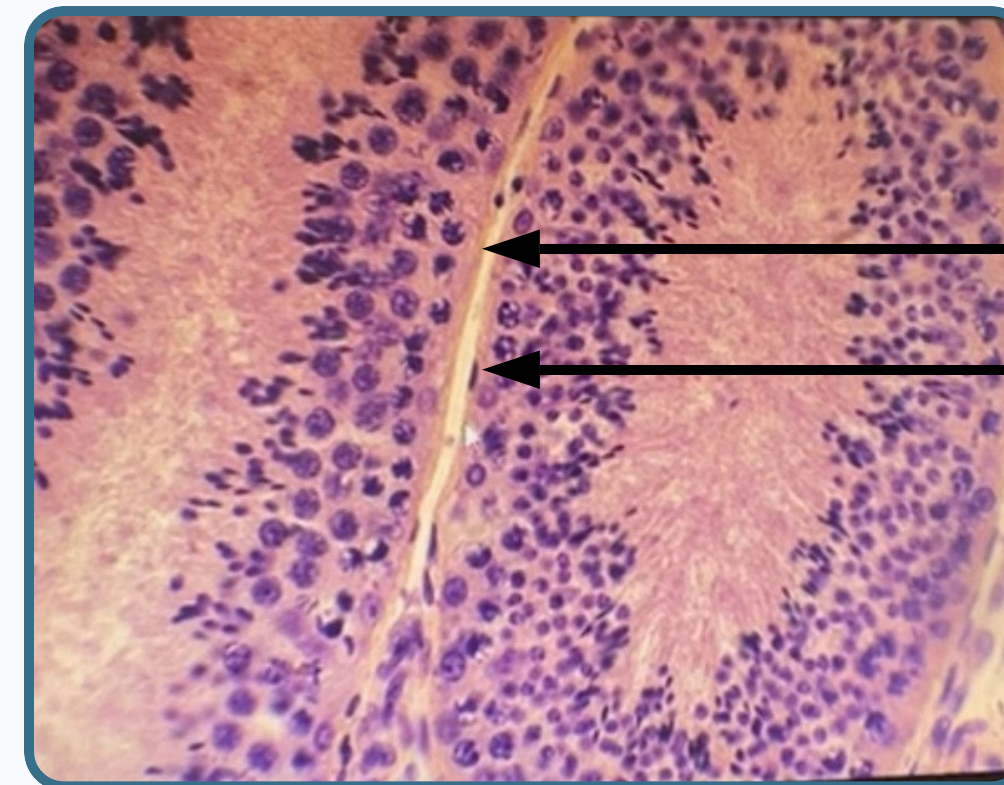
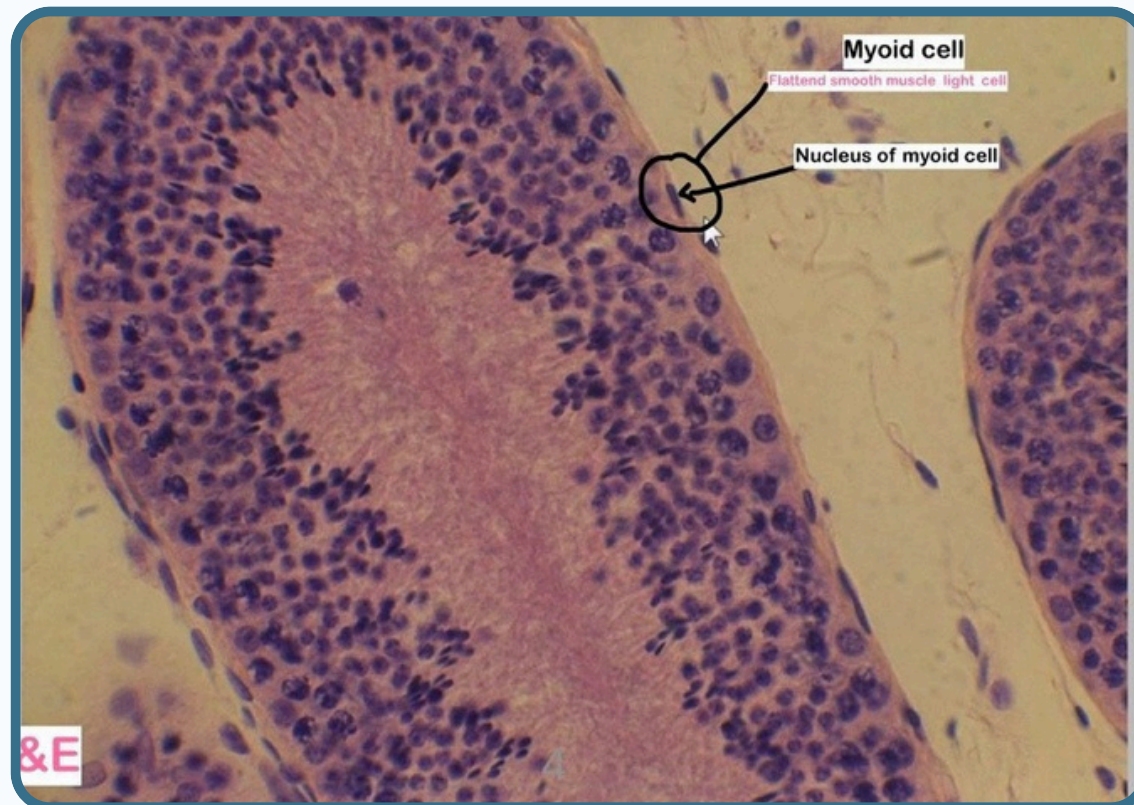


Section In The Testes



Leydig cells (interstitial cell)

Small rounded with spherical nuclei each cells secrete the testosterone

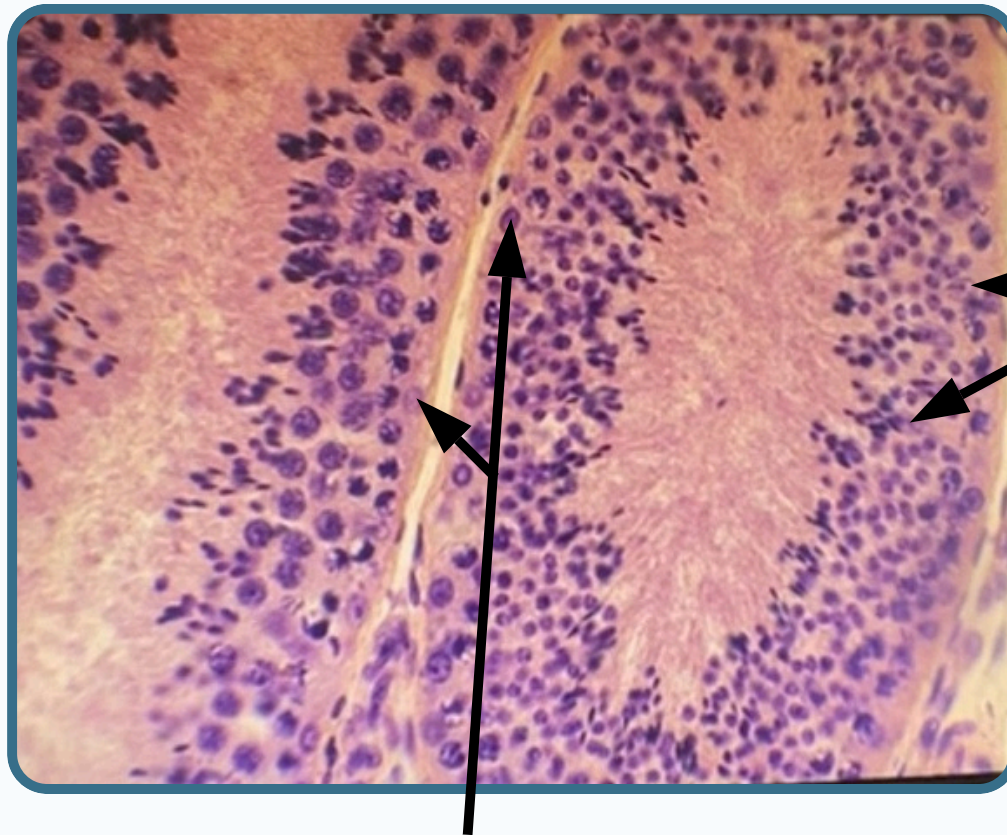


Basement membrane Nucleus of myoid cells

founded in the inner layer of the basal lamina surrounded the seminiferous tubules



Section In The Testes

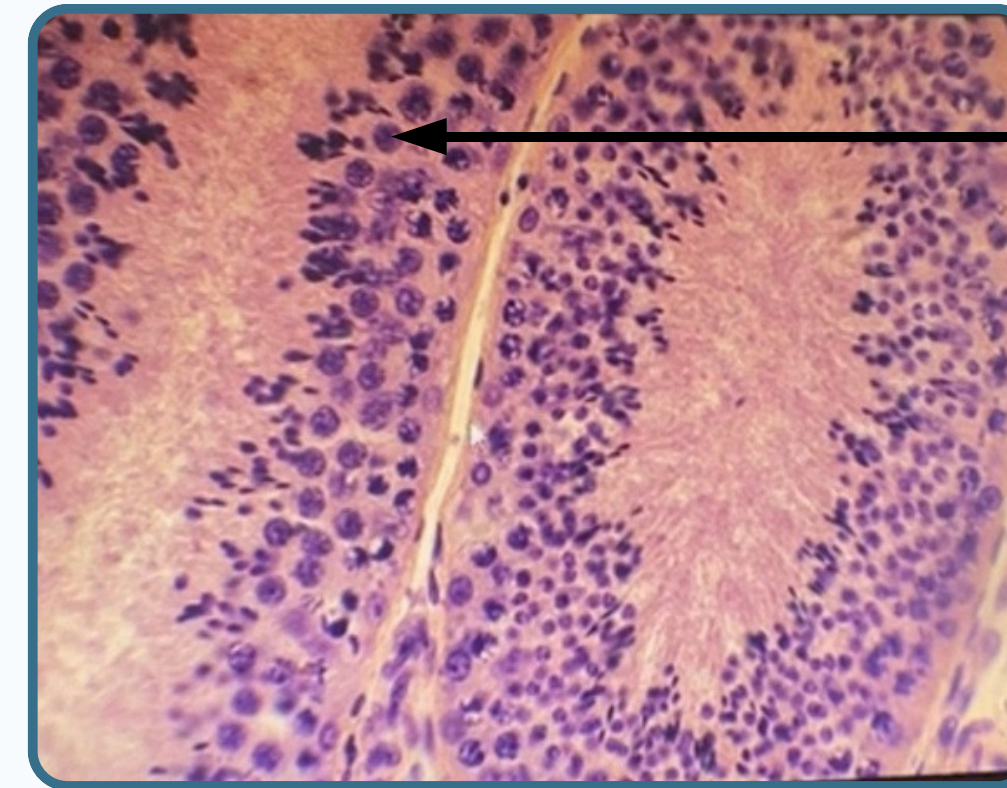


Spermatogonia

Located next to the basement membrane

Sertoli cells

Tall columnar or pyramidal in shape Adhere to the basement membrane and extend to the lumen



Primary spermatocyte

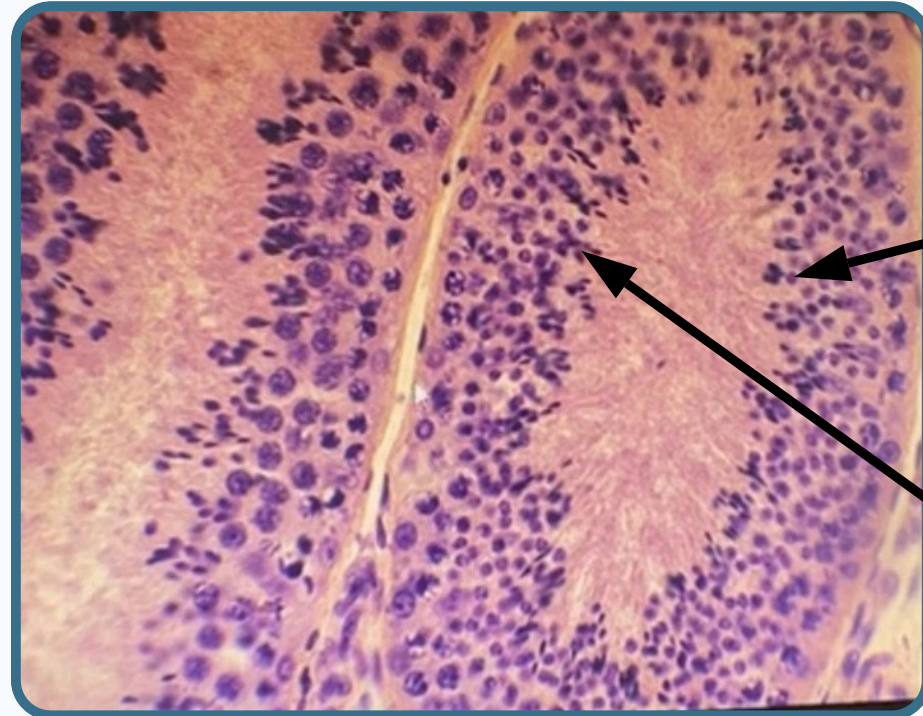
Largest cells in the spermatogenic epithelium Characterised by presence of the partially condense chromosome in various stages synapses and recombination

***Secondary spermatocyte** not seen **because** it's short life span Dividing and give Early spermatid

Male Reproductive System



Section In The Testes



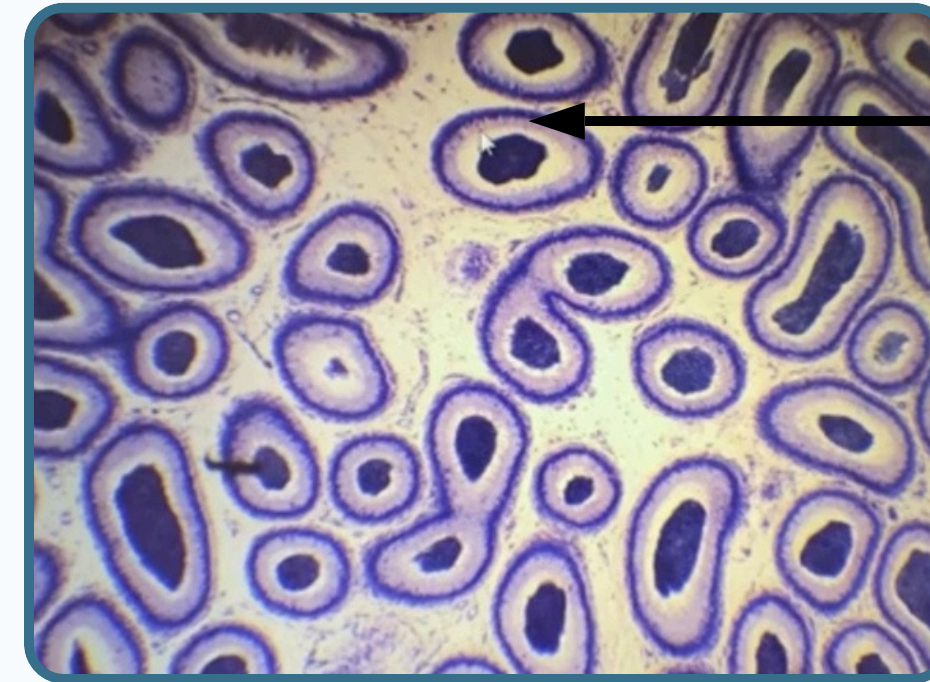
Early spermatid

- Has haploid number of chromosomes the
- nucleus are small rounded structures

Late spermatid

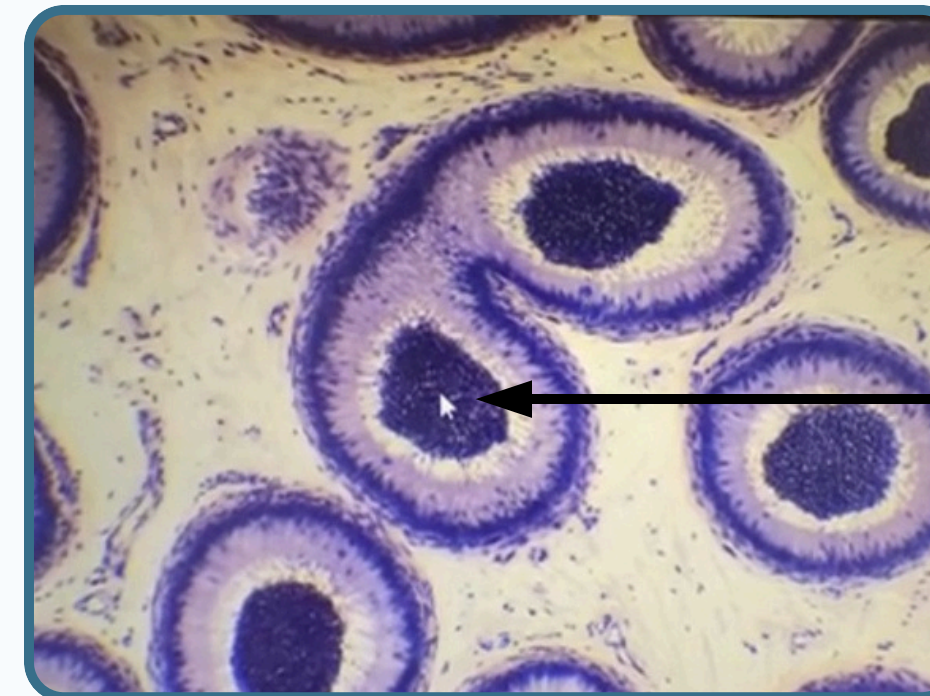
- Near to the lumen
- Elongated
- Darkly stained

Section In The Epididymis



Epididymis

- Long coiled duct
- with pseudostratified columnar epithelium

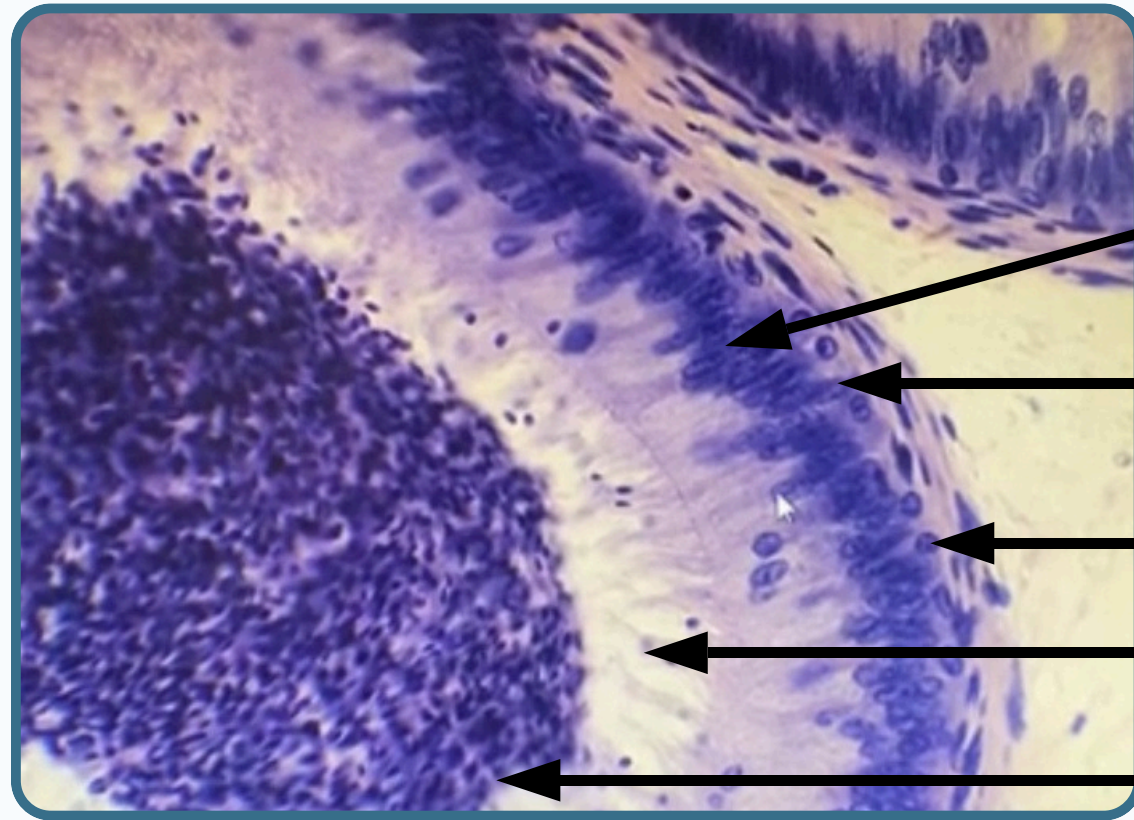


Aggregation of sperms within the lumen

Male Reproductive System



Section In The Epididymis



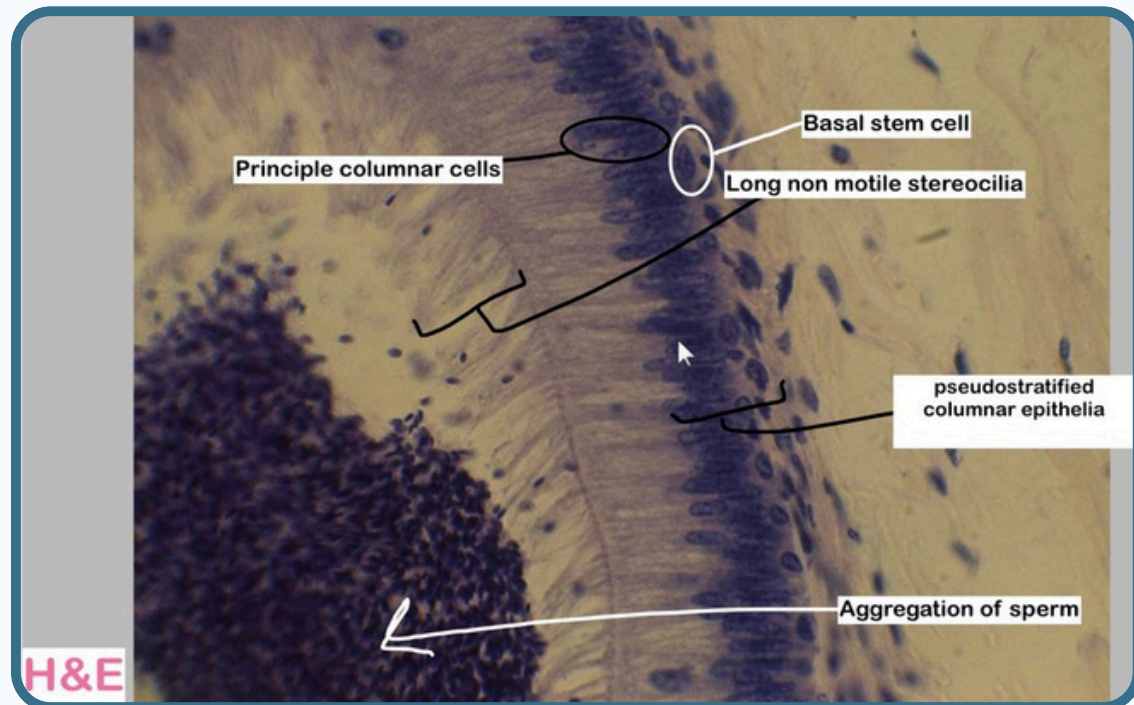
Pseudostratified columnar epithelium

Principal cells(tall-columnar)

Stem cells(small-rounded)

Non-motile stereocilia

Aggregation of sperm



H&E

Section In The Vas Defernes



Vas deferens

- Relatively Small lumen
- Strait tube
- Thick muscular layer

Adventitia

Layer of connective tissue with blood vessels

Muscularis

Consist of (inner-outer longitudinal and middle circular)

Mucosa

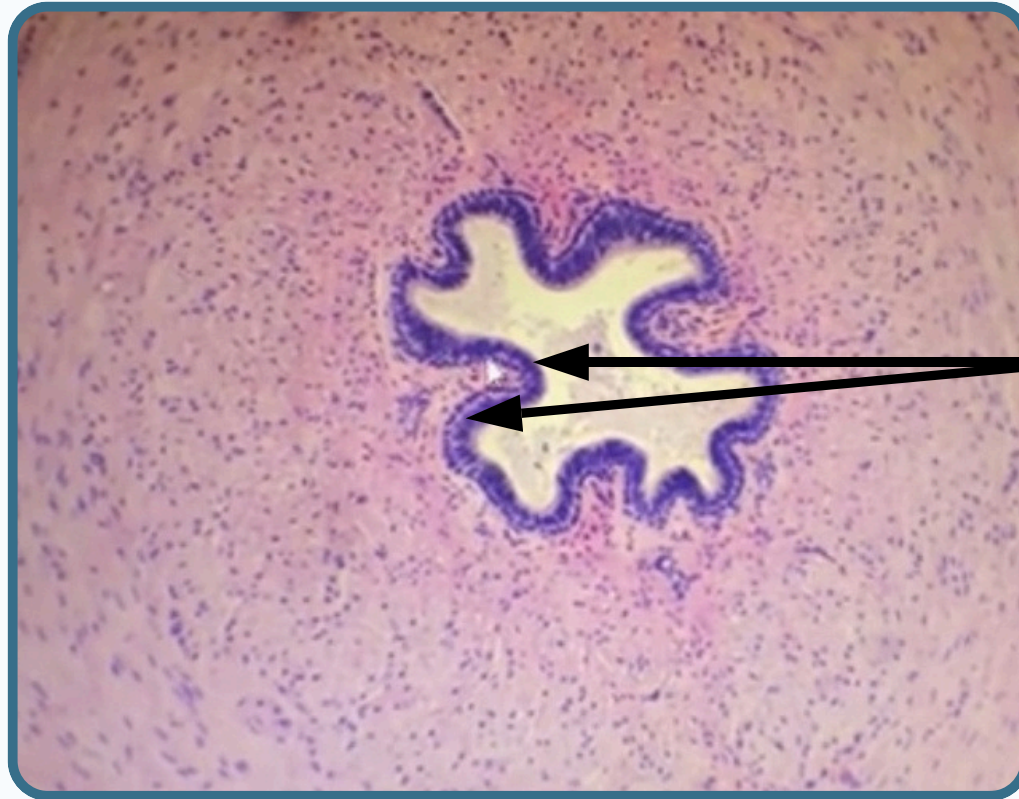
(slightly folded longitudinally)
Pseudostratified columnar epithelium



Male Reproductive System

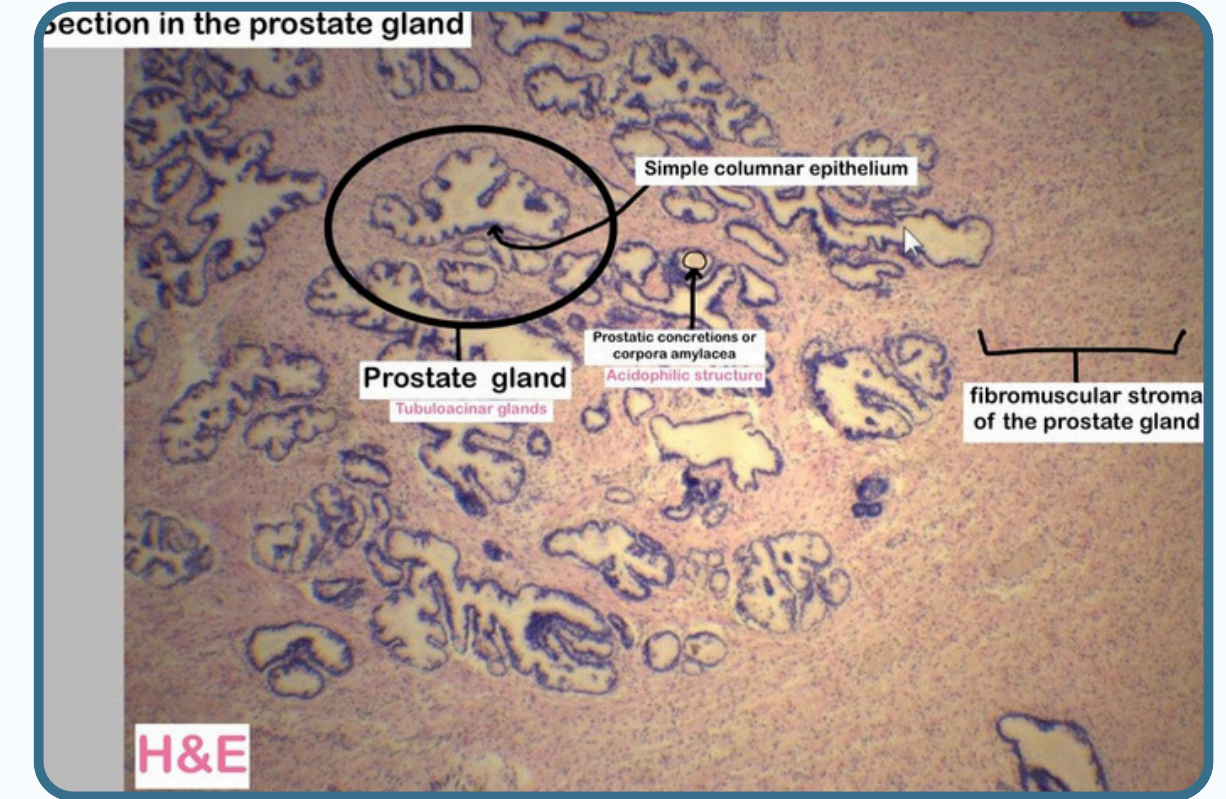


Section In The Vas Defernes

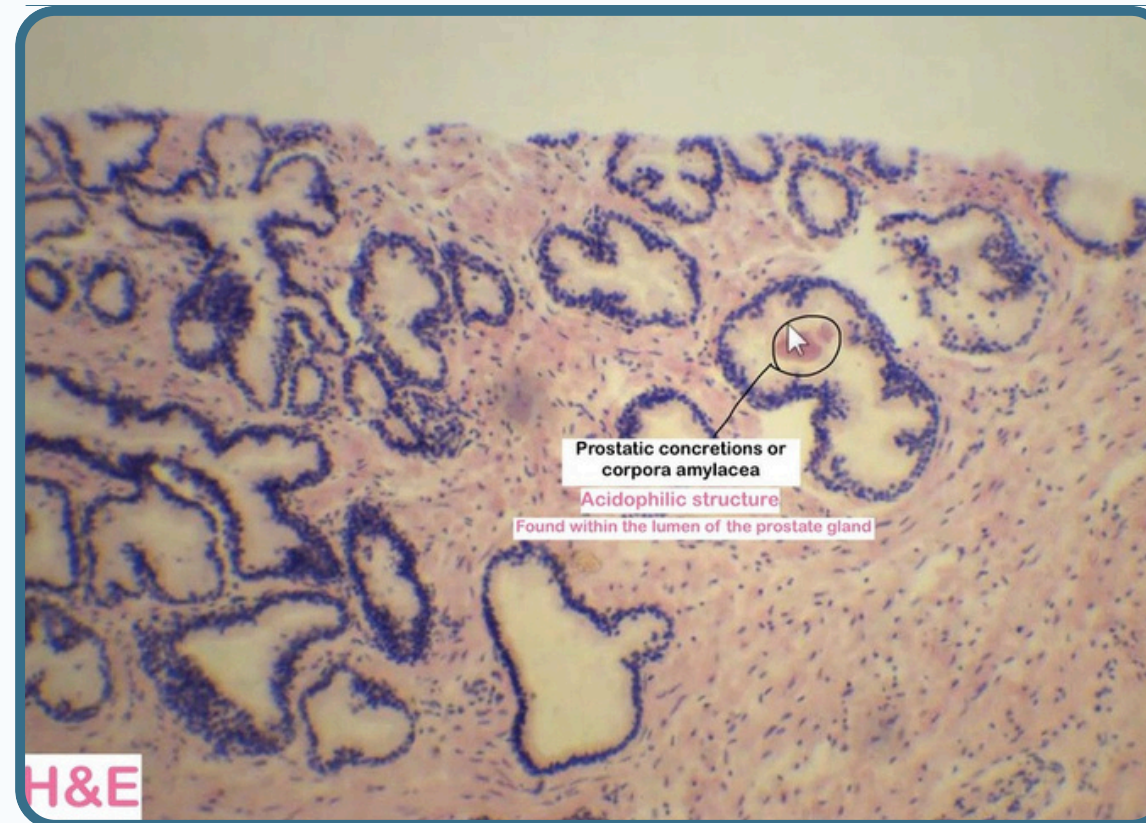


Pseudostratified columnar cells
with two types of cells
(columnar and small rounded stem cells)

Section In The Prostate Gland



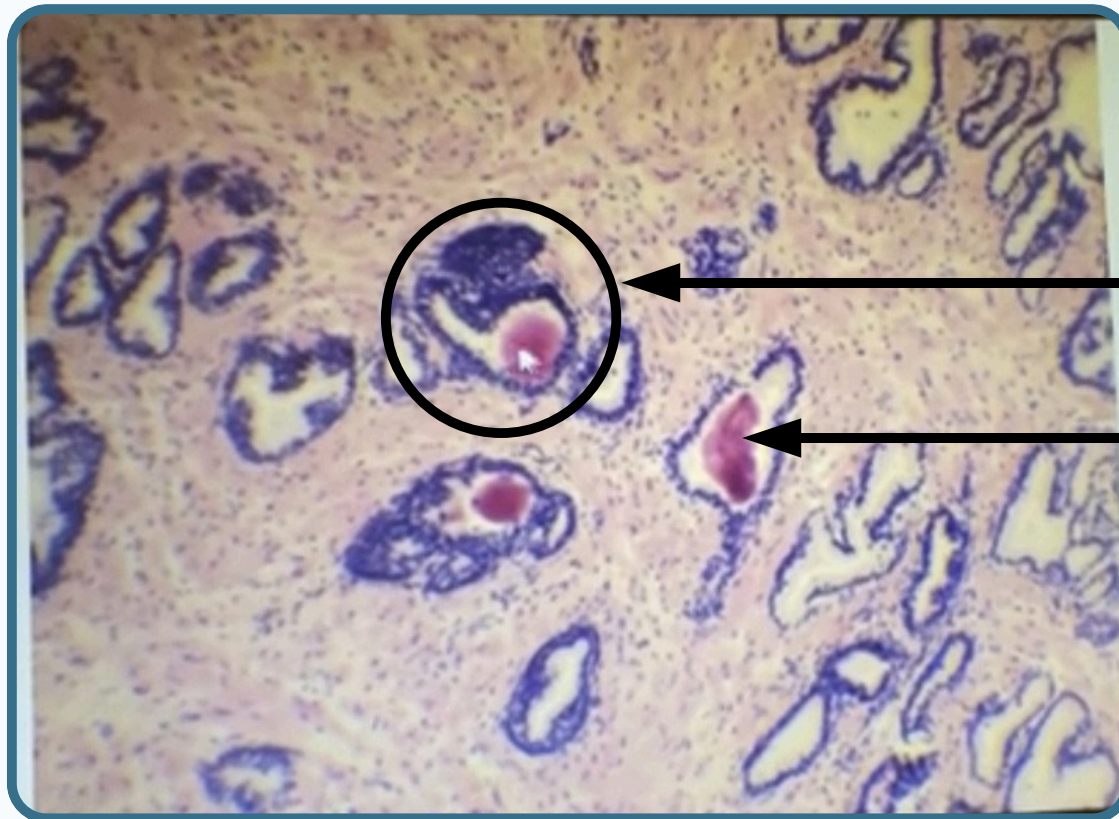
Section In The Prostate Gland



Male Reproductive System



Section In The Prostate Gland

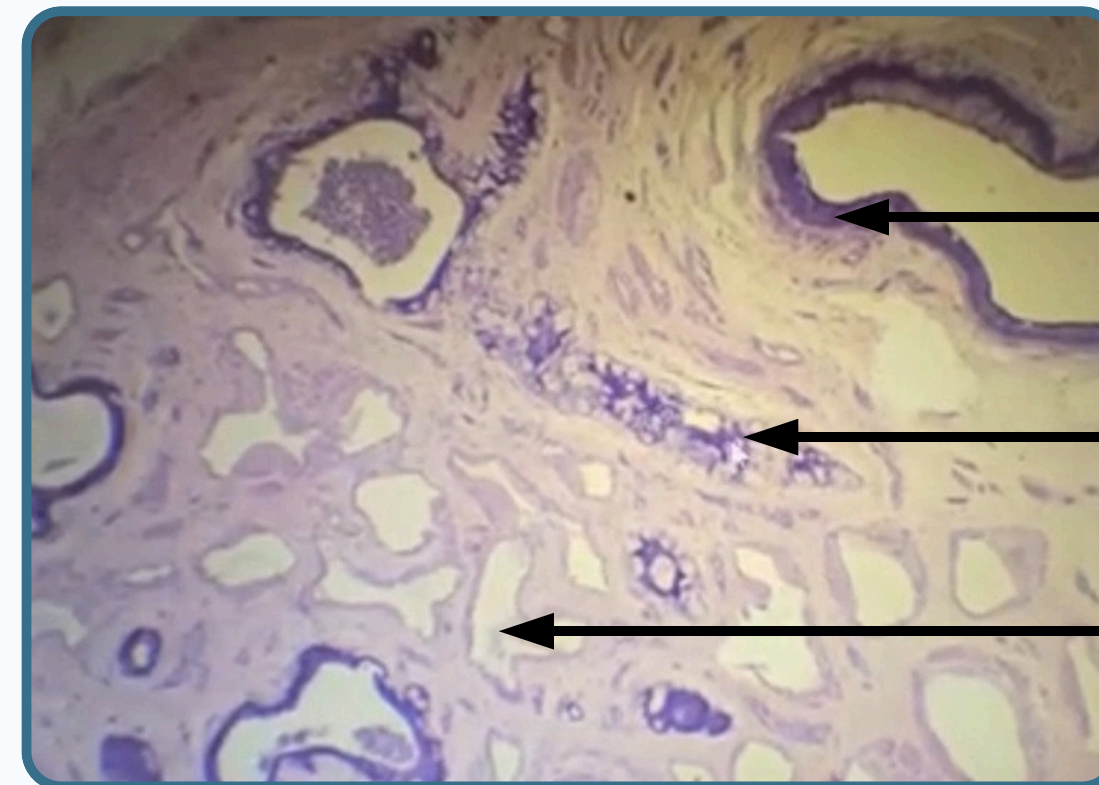
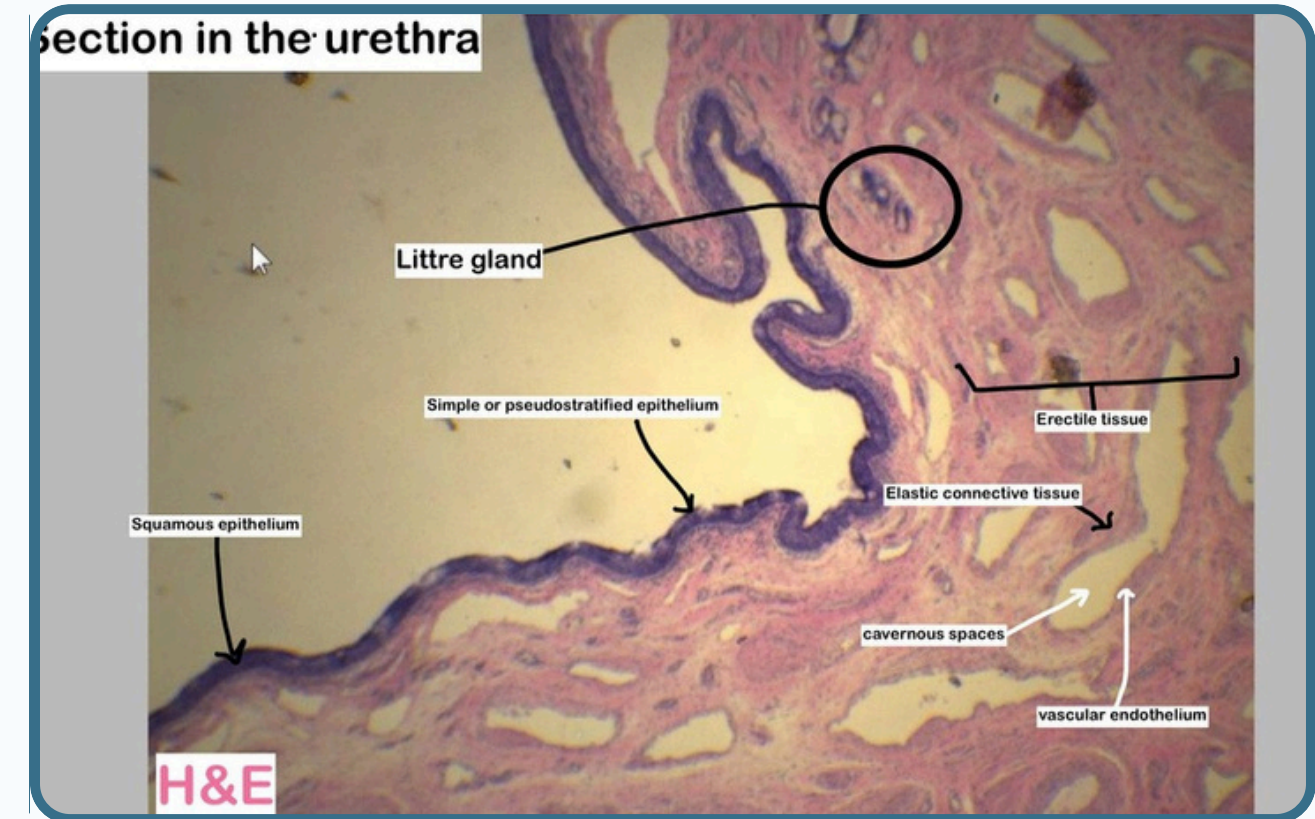


Prostate gland (tubuloalveolar)

Corpora amylacea

Section In The Prostate Gland

Section In The Urethra



Lining epithelium

Littre gland (same lining epithelium of the urethra)

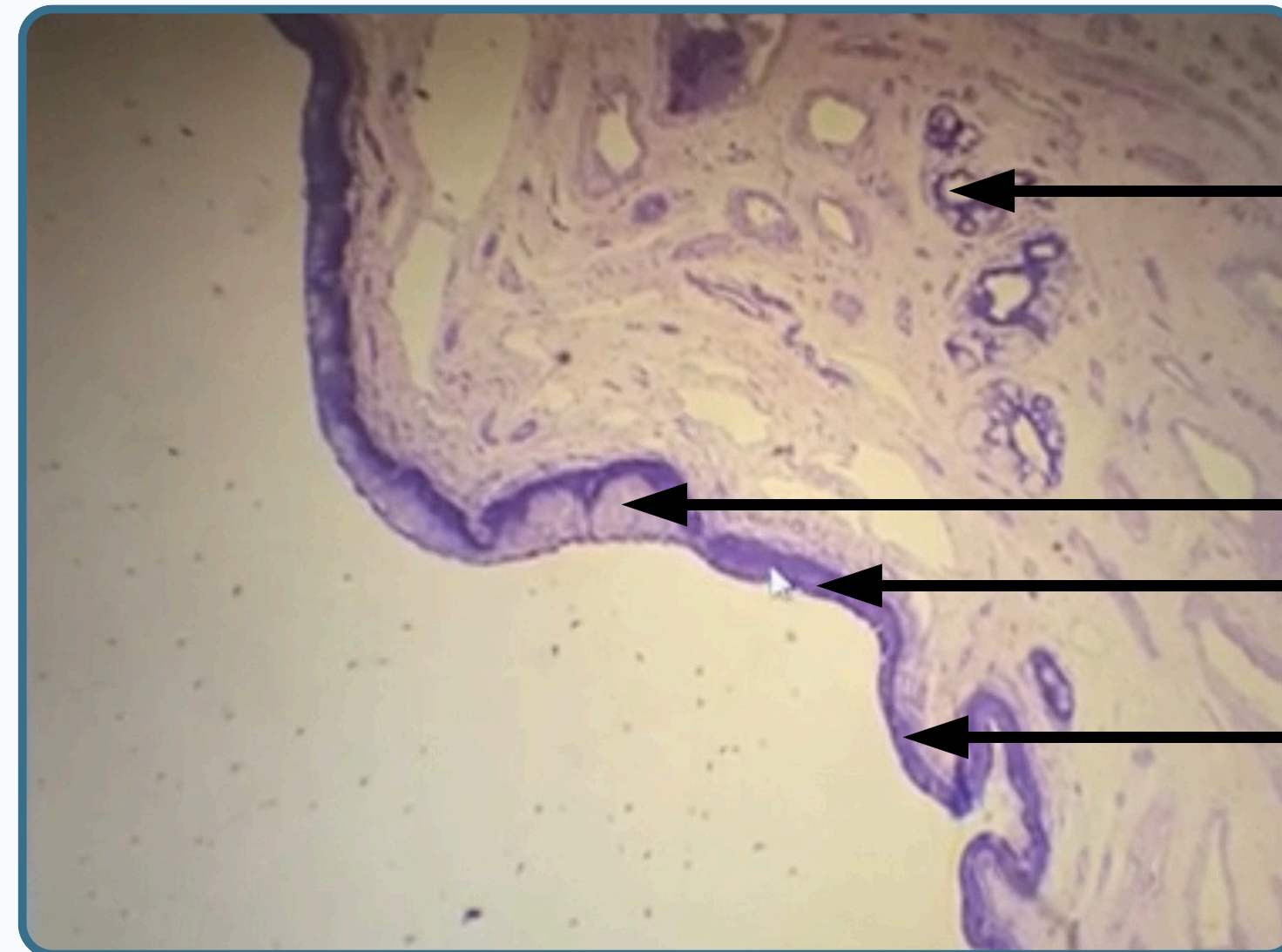
Cavernous Space



Male Reproductive System



Section In The Prostate Gland



Littre gland

Stratified squamous

Stratified columnar

Pseudostratified

All Slides Are Stained By Hematoxylin and Eosin

THANK YOU

EDITED BY



© ALL COPYRIGHT ARE RESERVED FOR
ARECH AND SATURN MEDIC

WWW.SATURNMEDIC.COM