

HISTOLOGY PRACTICAL LECTURE - 11 -

THE SKIN

EDITED BY

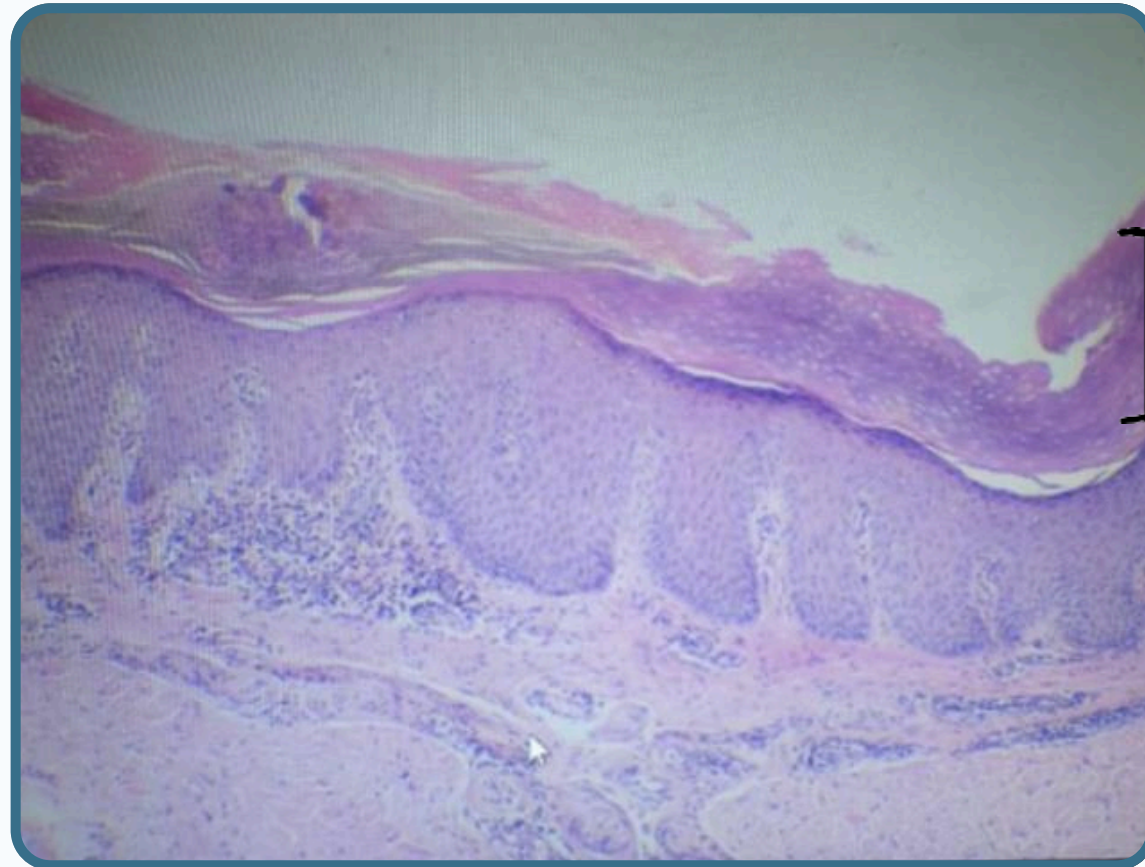


© ALL COPYRIGHT ARE RESERVED FOR
ARECH AND SATURN MEDIC

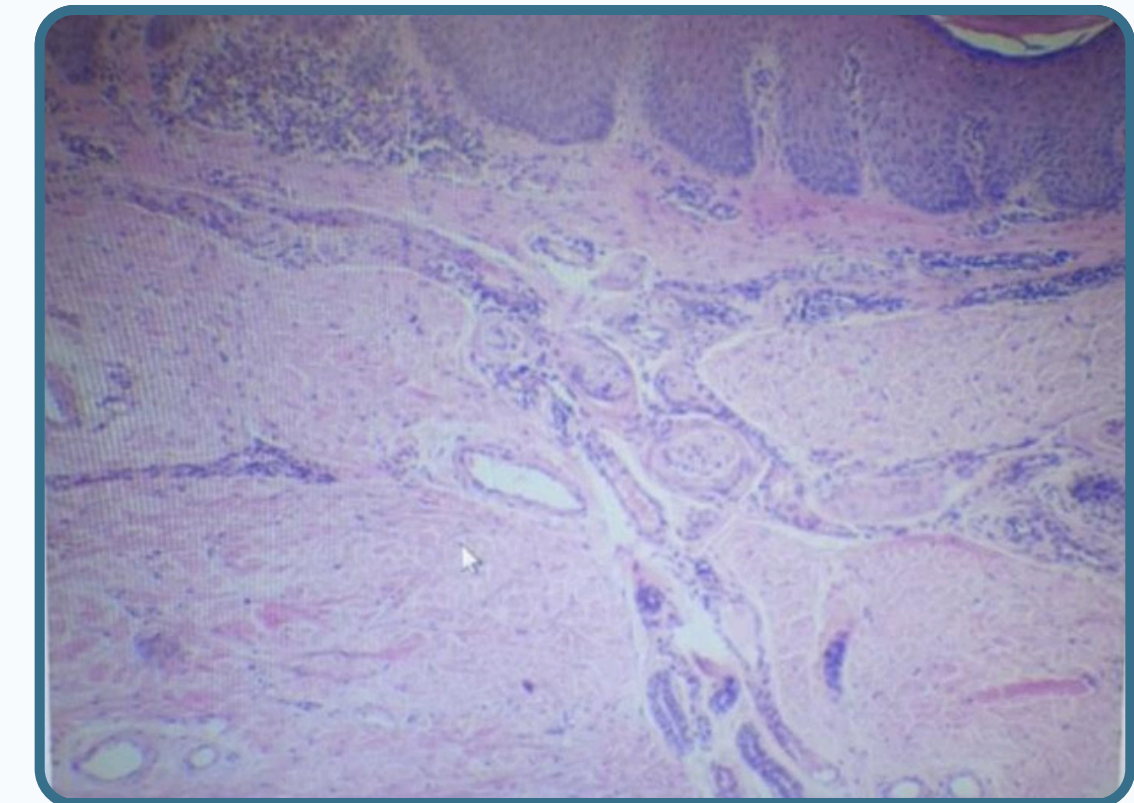
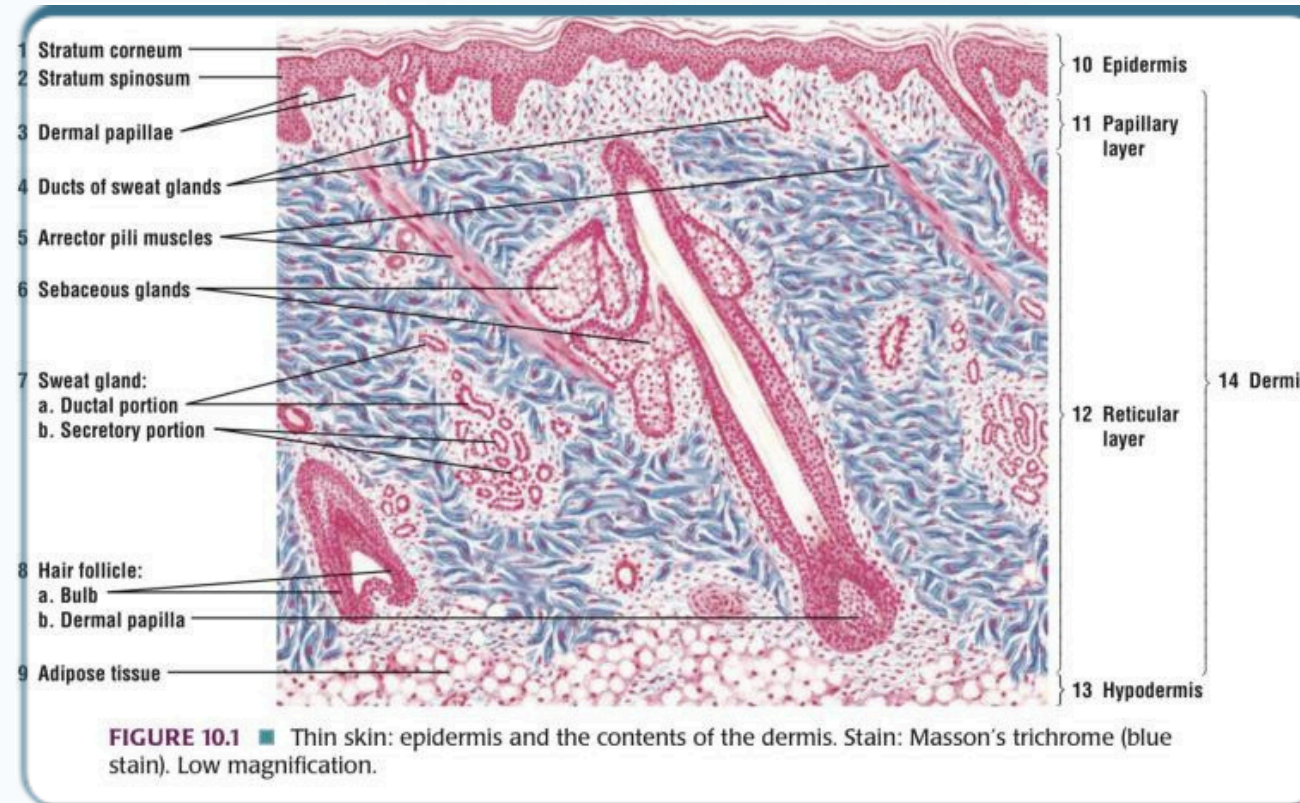
WWW.SATURNMEDIC.COM



THE SKIN



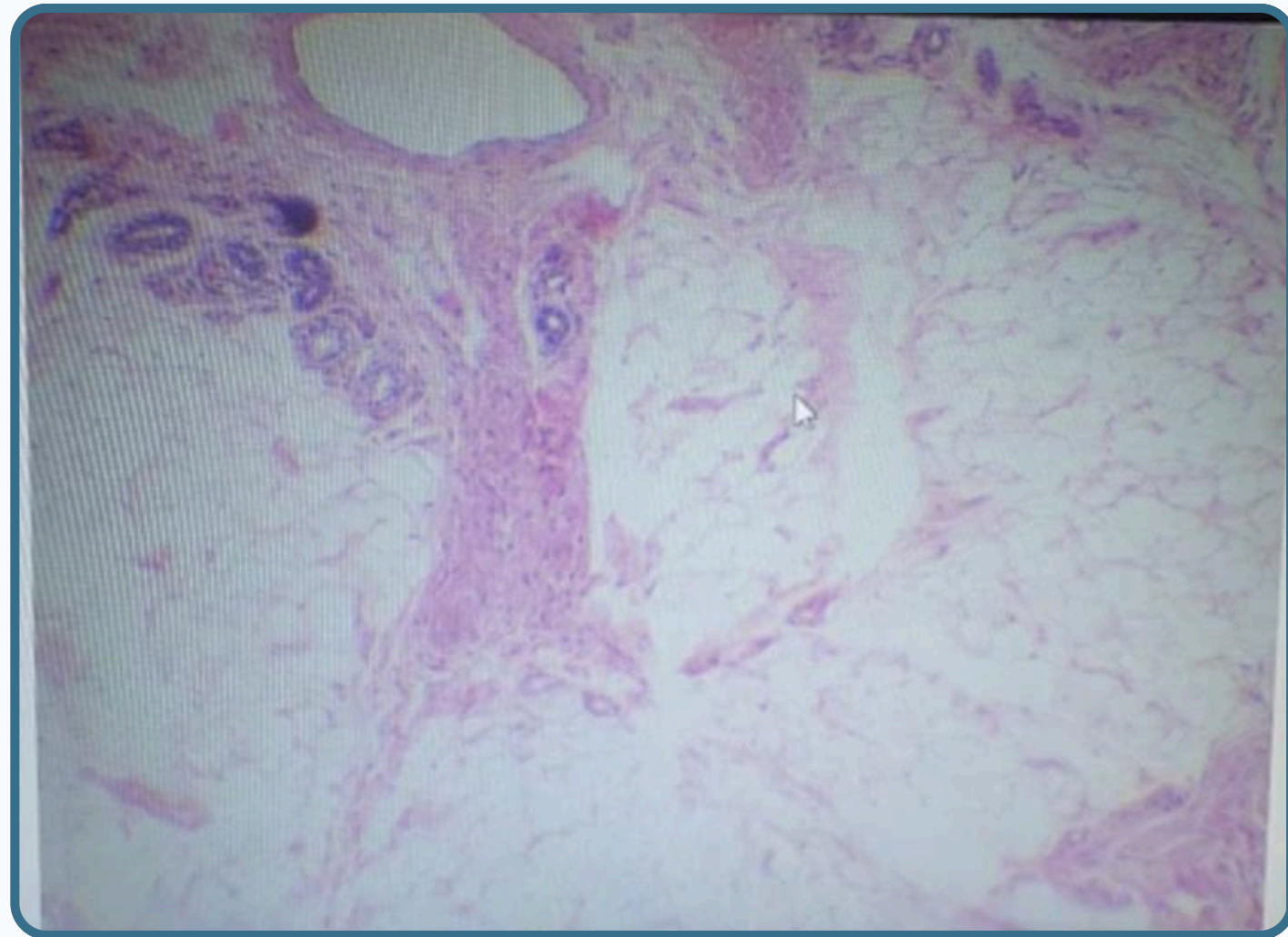
Epidermal layer



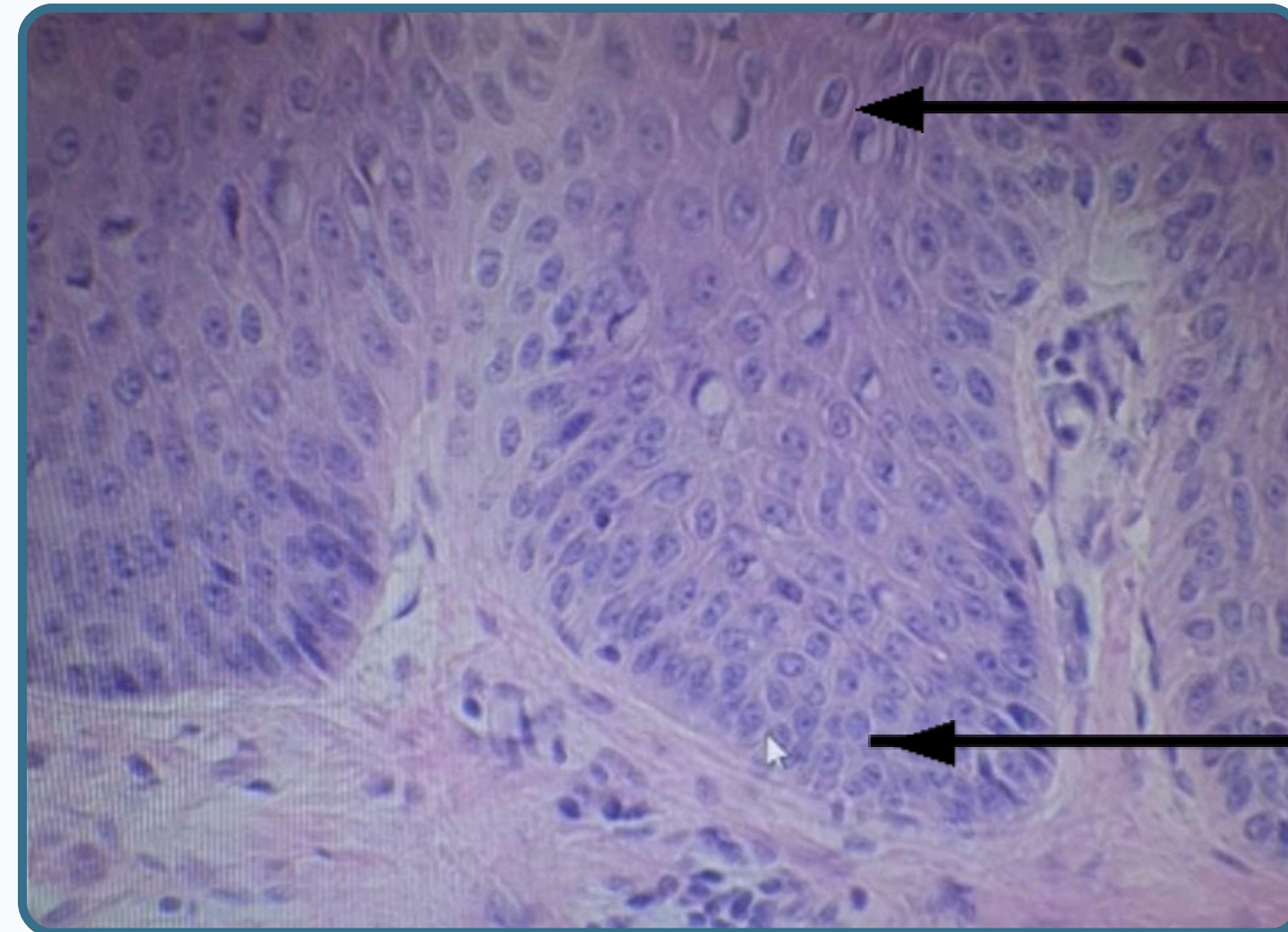
Dermis layer



The epidermis made of the stratified squamous keratinized epithelium consist of five layers:-



Hypodermis



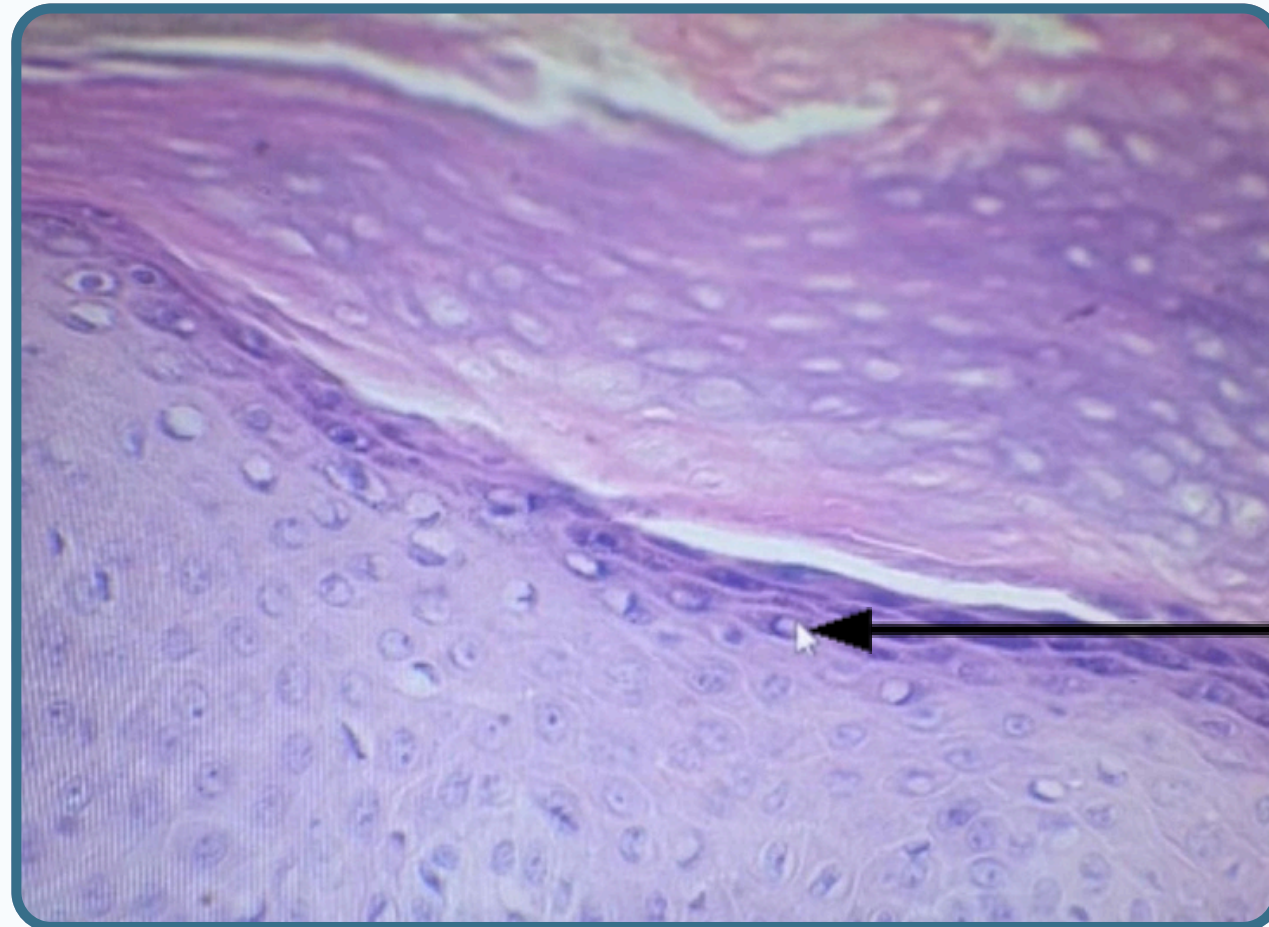
Stratum spinosom

Represent the thickest layer Made by keratinocytes cell The cells with spines process With the intermediate filaments

Stratum basale

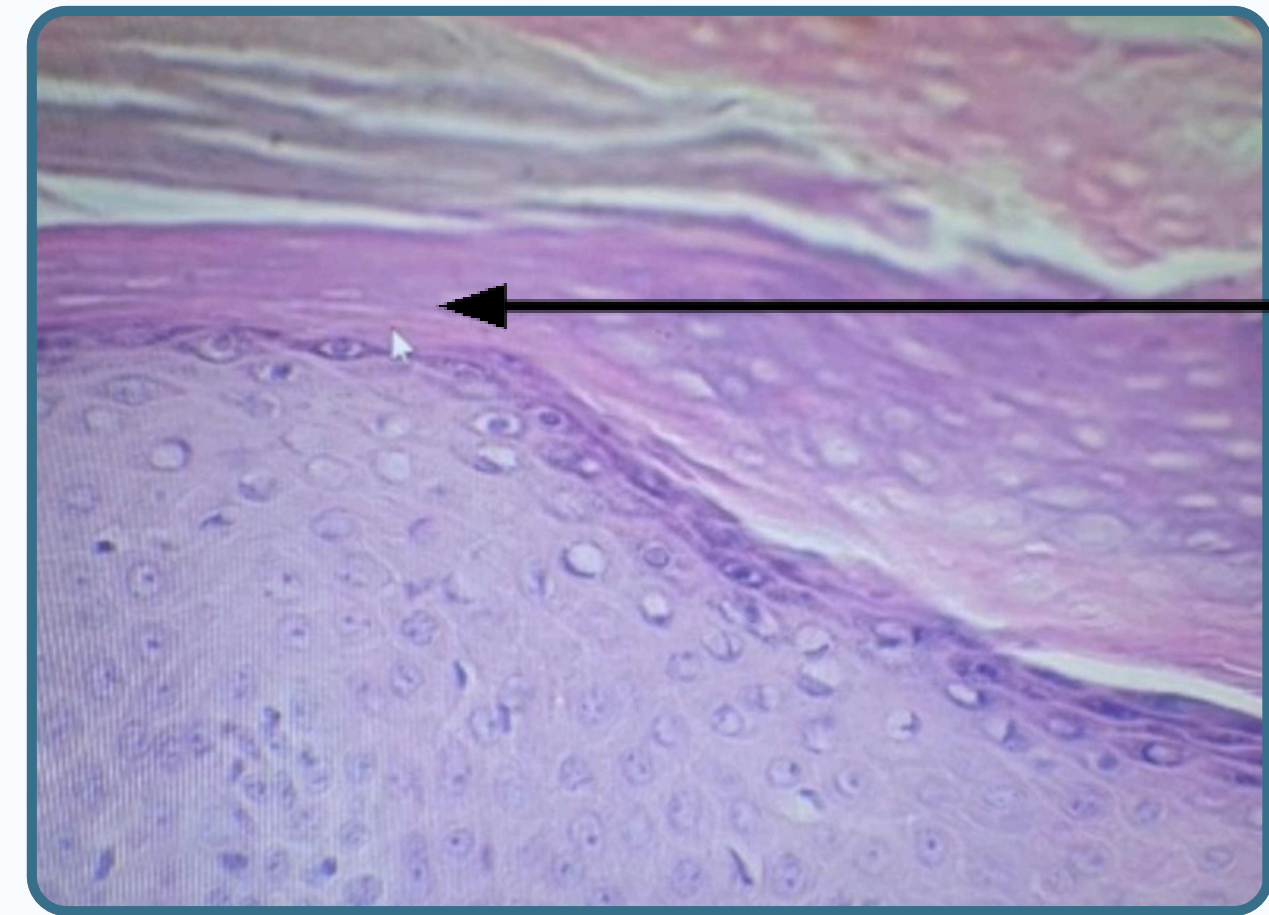
Represent single row of either cuboidal or columnar cells that rest on the Basel lamina

THE SKIN



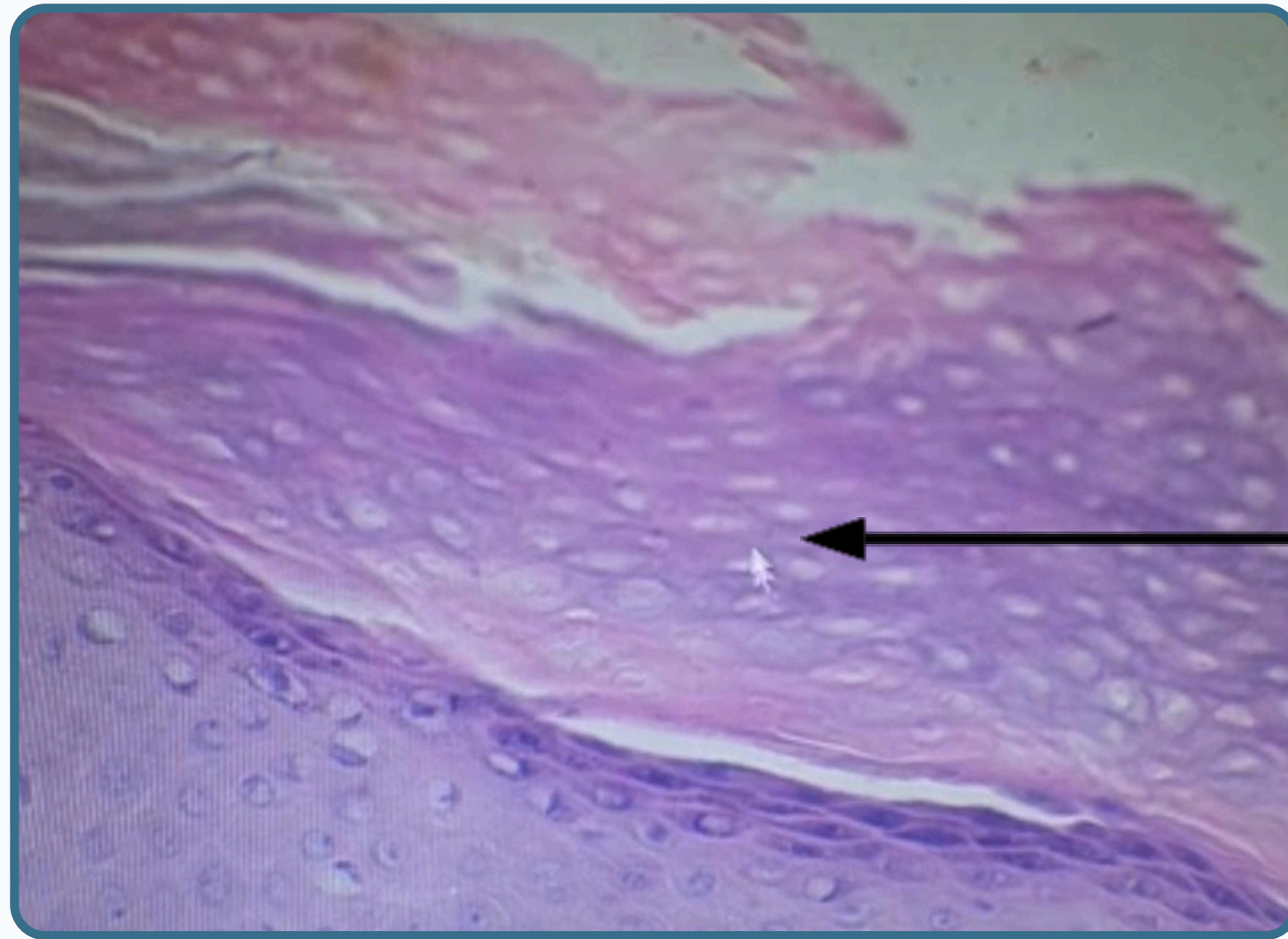
Stratum granulosum

Present of granules (keratohyaline granules) till this the cells are viable contained cellular organelles represent the nucleus and cytoplasmic organelles



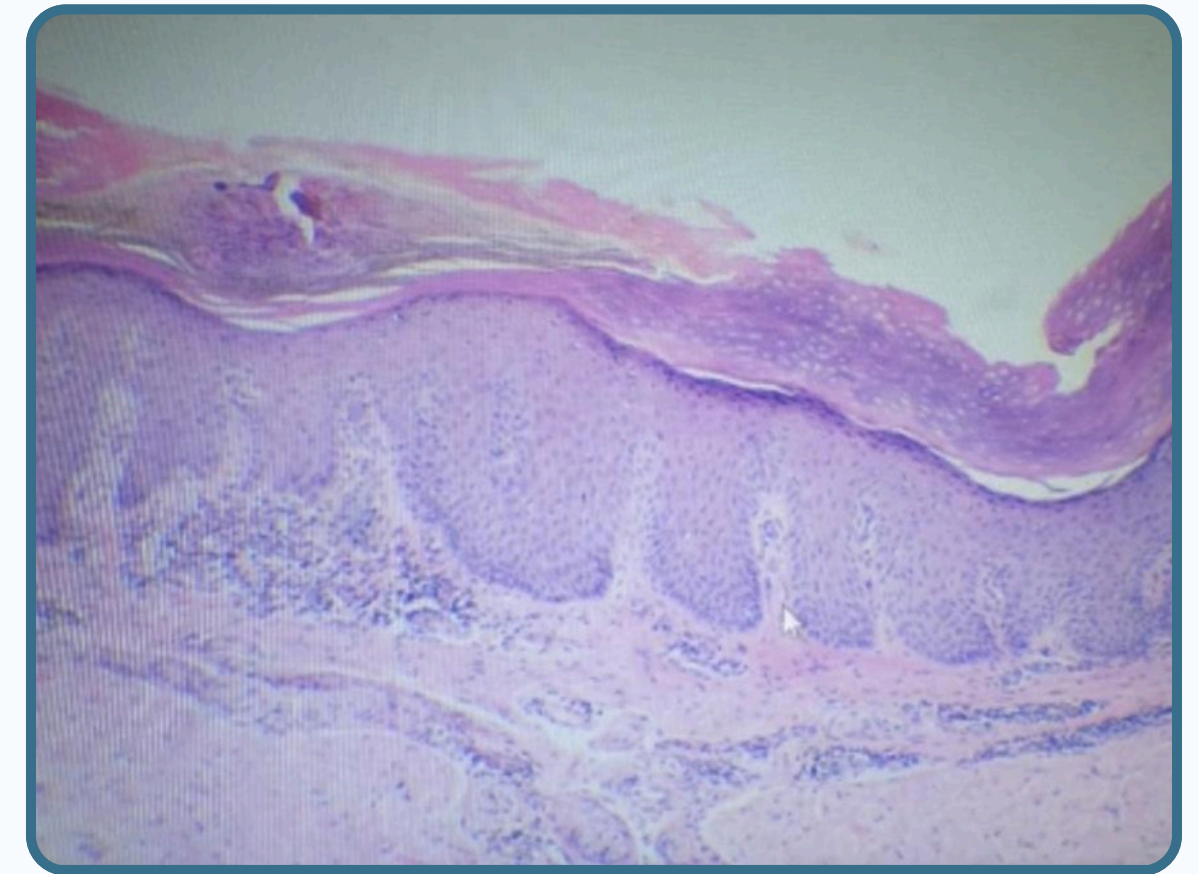
Stratum lucidum

In which the cell lose their nucleus This layer absent in thin skin



Stratum corneum

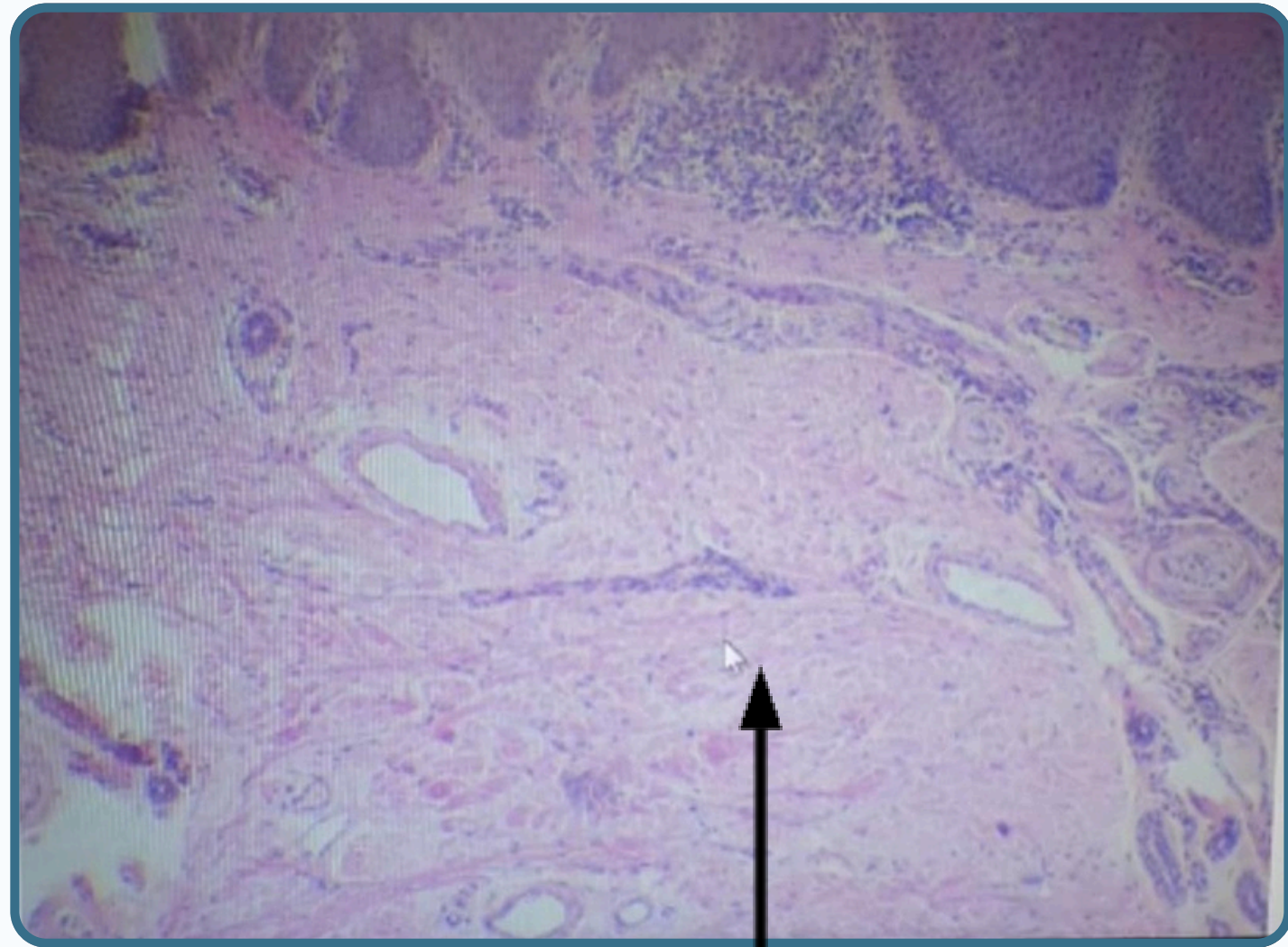
Represent the keratinized layer of skin. Its function is protection.



Dermis papillary

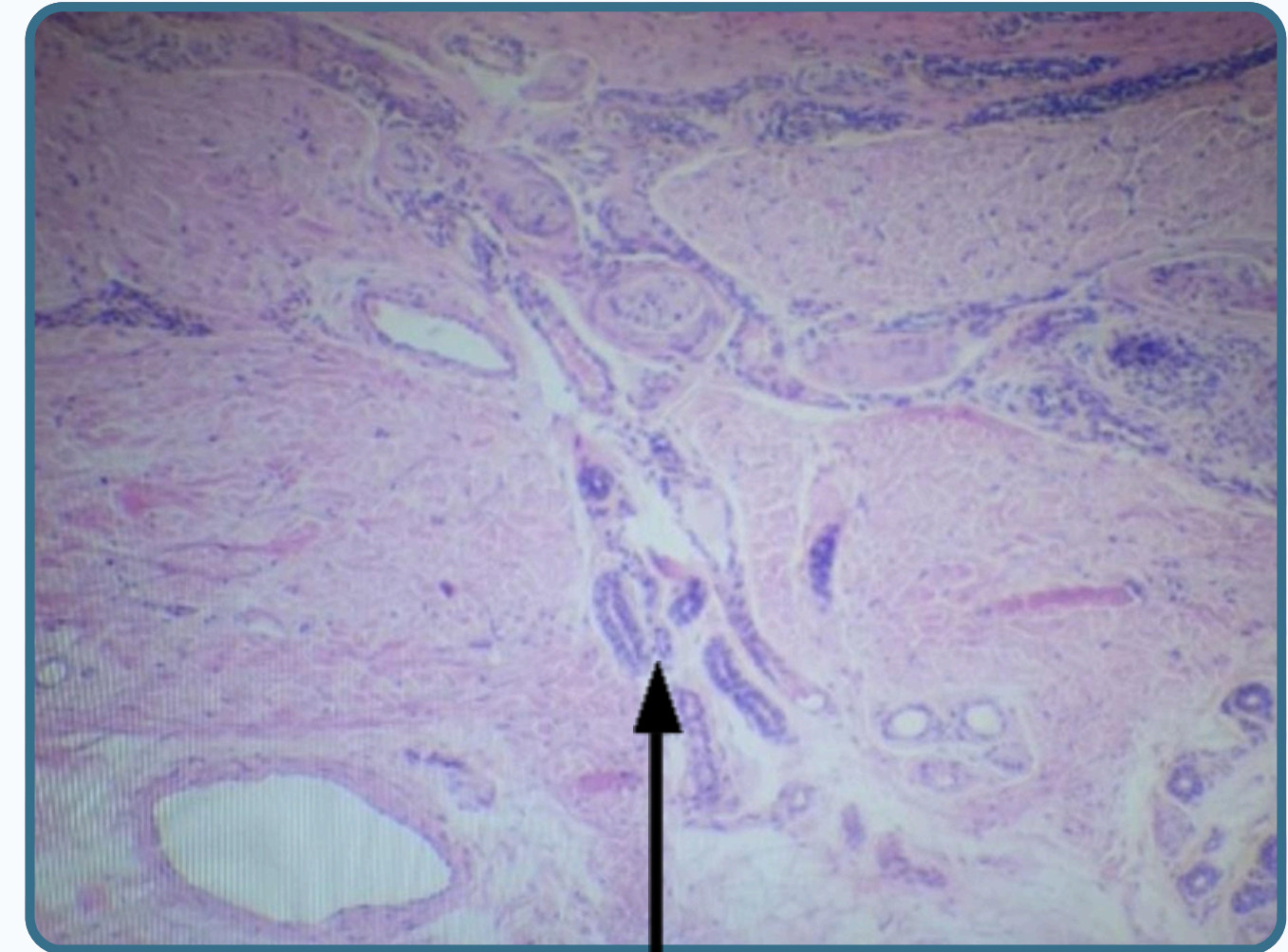
- That interdigitate with the epidermis ridges at the dermo-epidermal junction
- Highly cellular, contain less fibrous elements
- Contain vascular structure-nerve endings

THE SKIN



Reticular layer

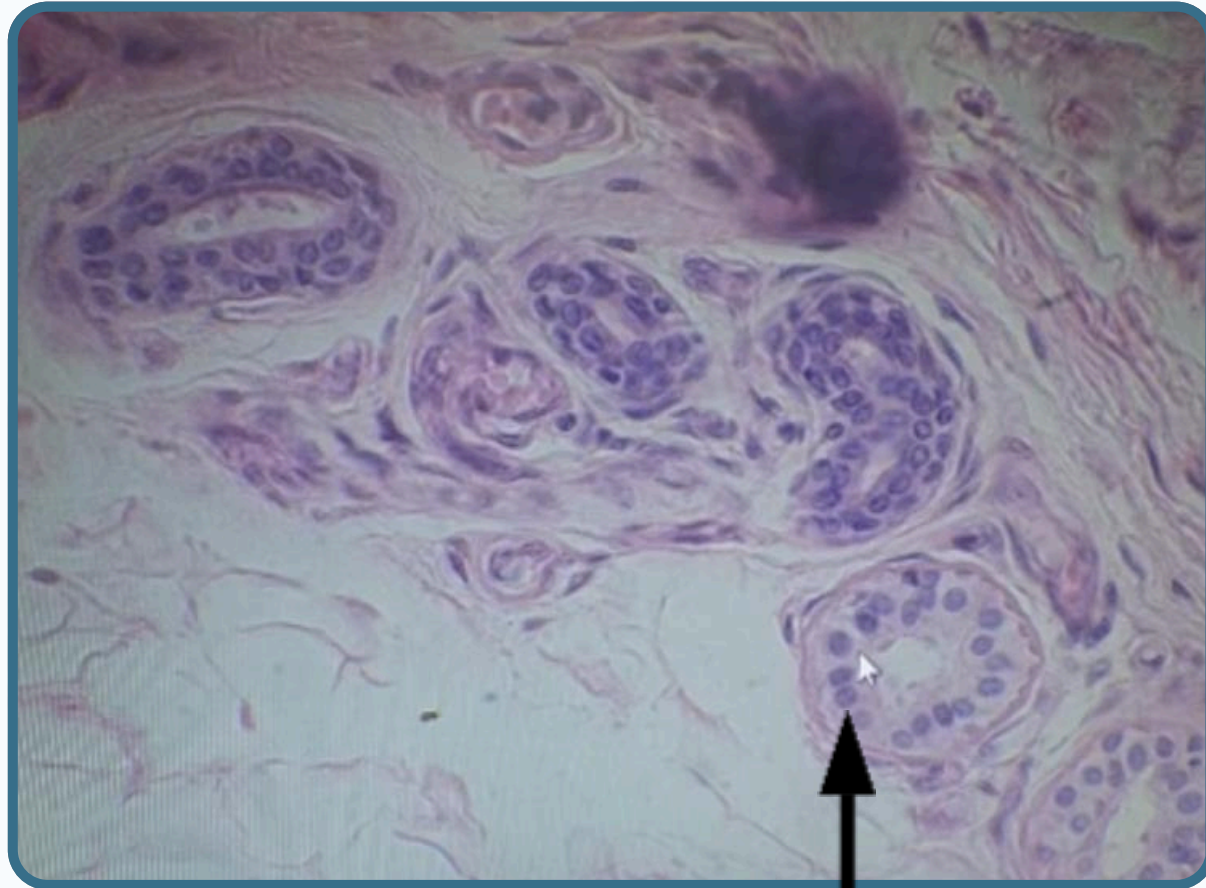
Dense irregular connective tissue contain vascular structure ,nerve endings and specific organ for sensation



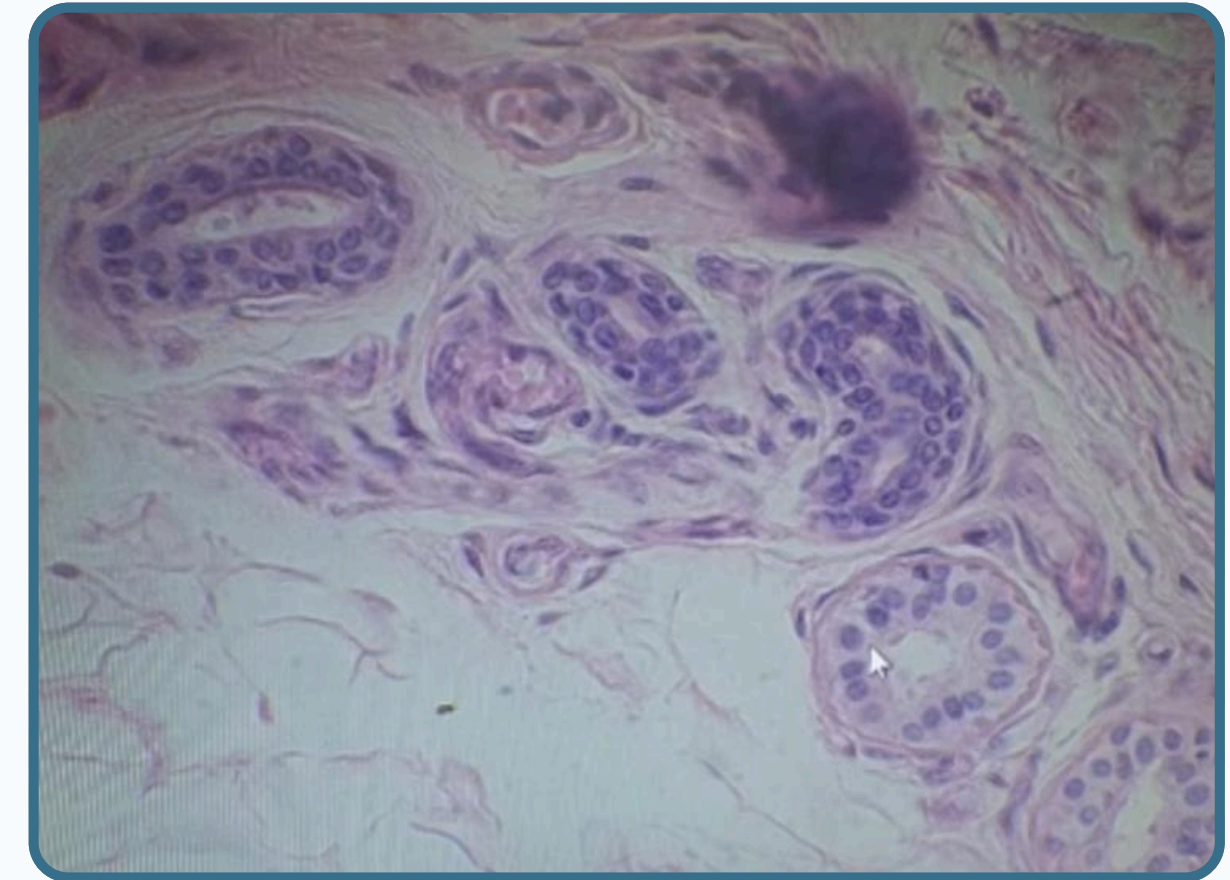
Sweat gland



Simple coiled simple tubular gland comprised of two region :-



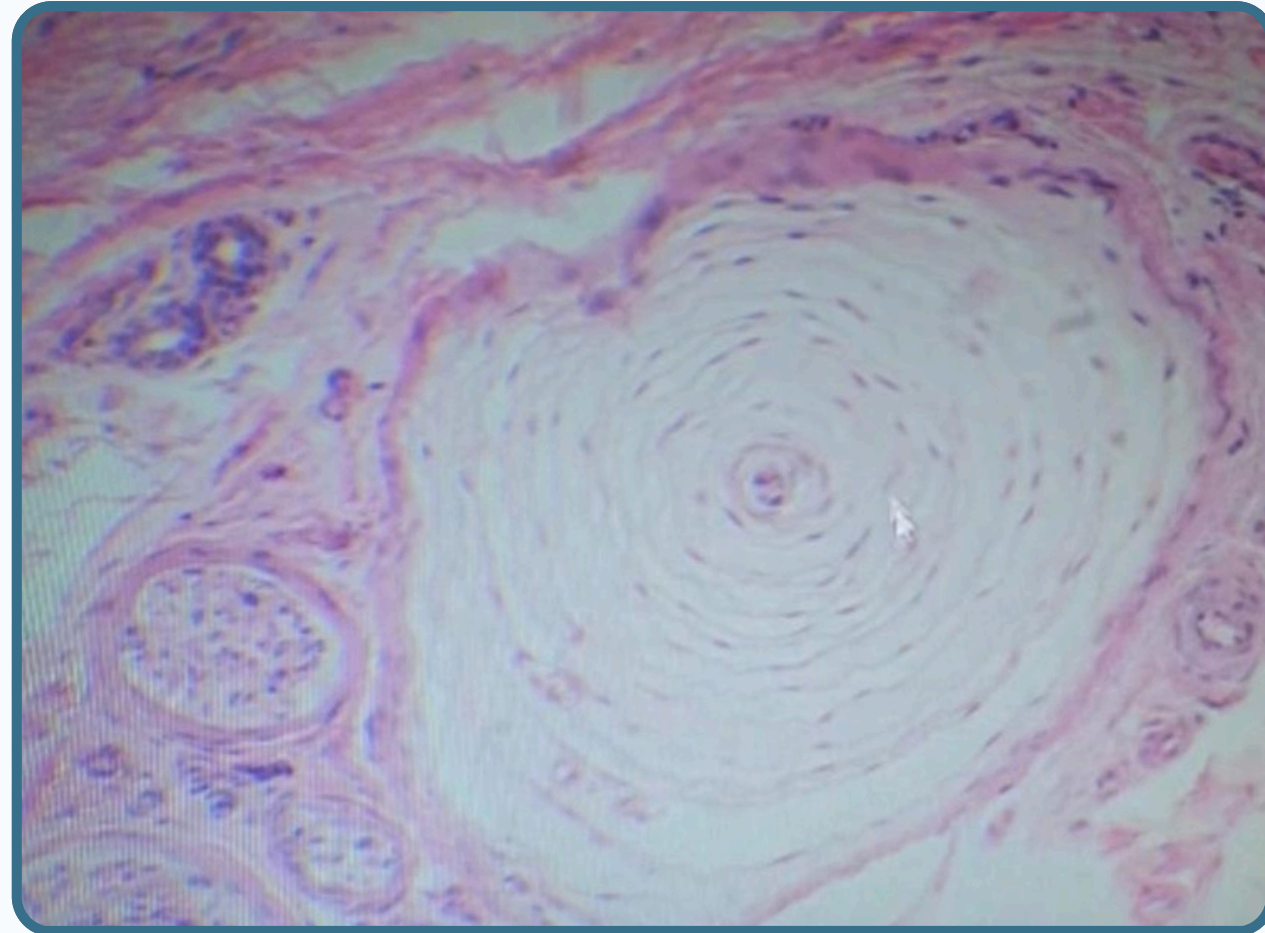
Secretory portion -Light stained



Duct portion -stratified cuboidal epithelium -dark stained

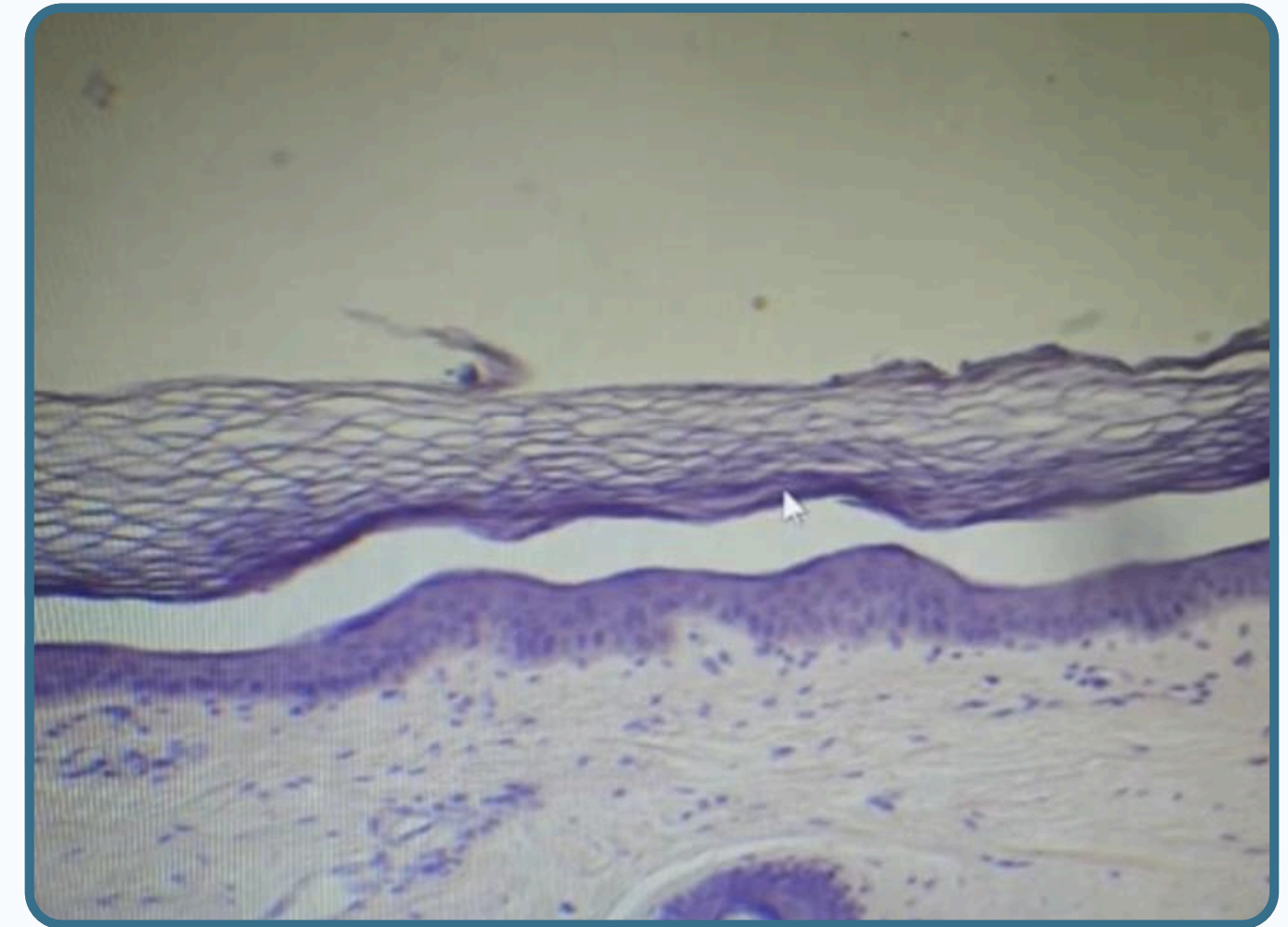


Thin skin:



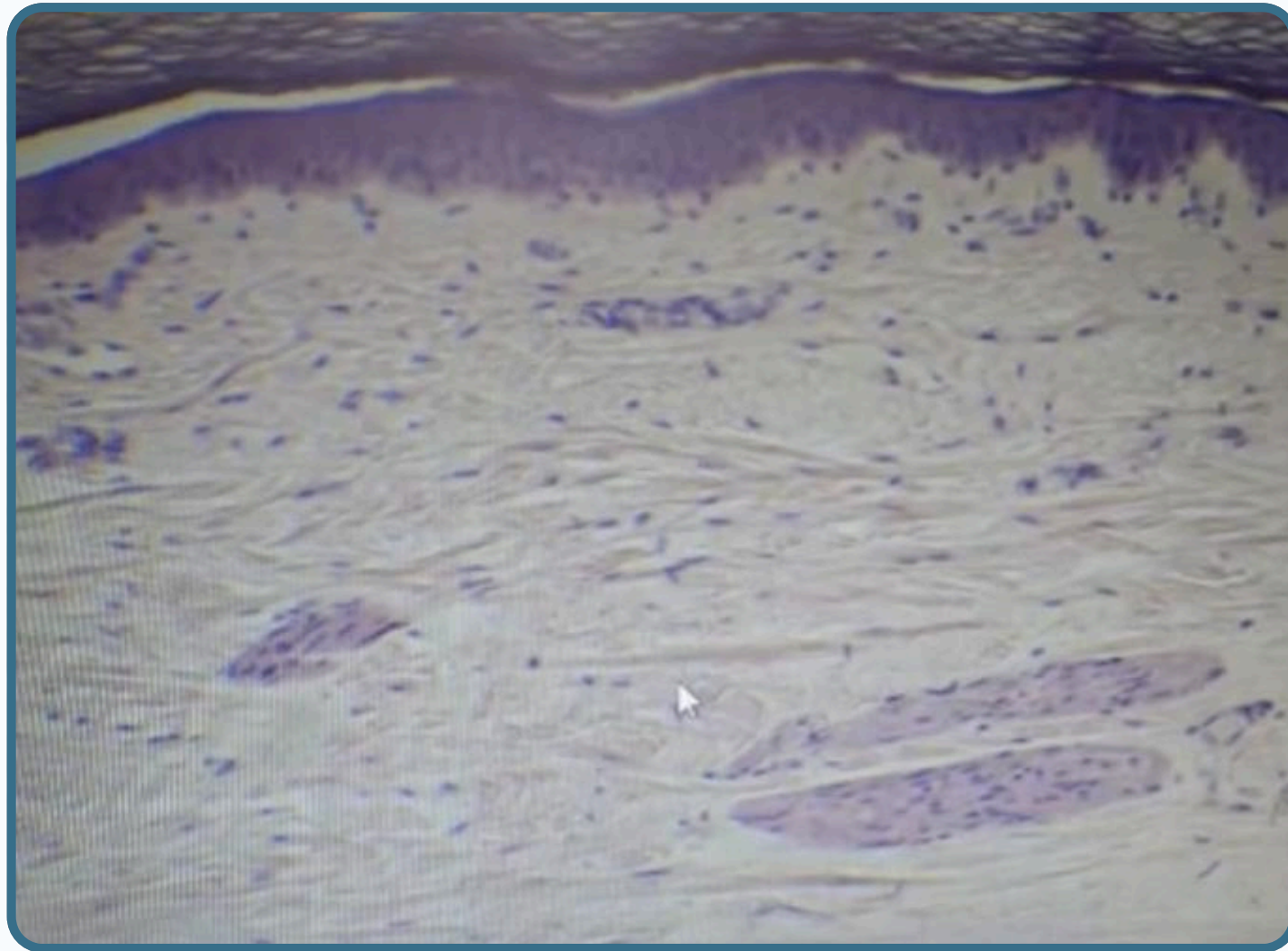
Pacinian corpuscles

- Found in the dermis
- Made by different layers and contain nerve fiber in center

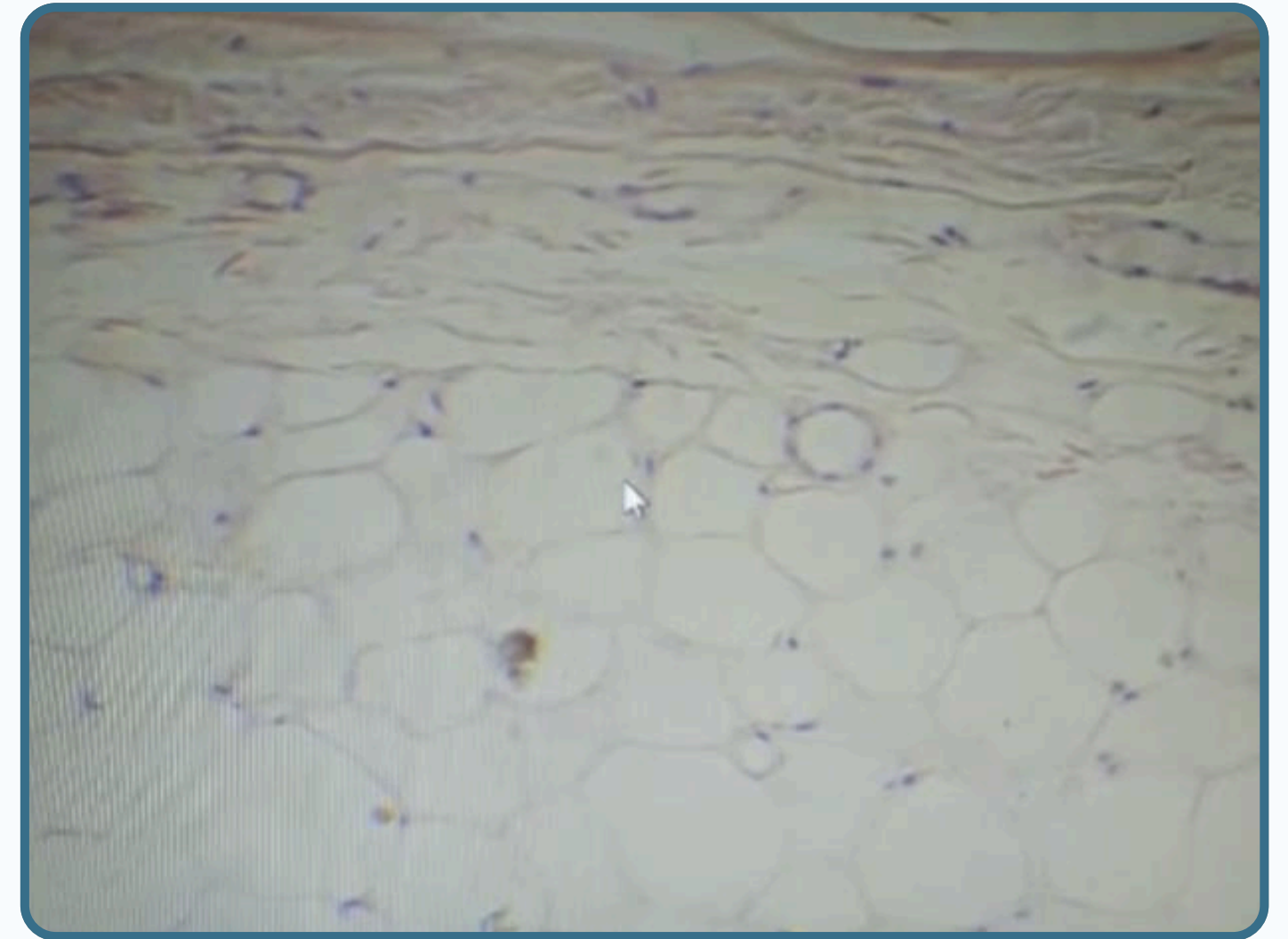


Epidermis

THE SKIN

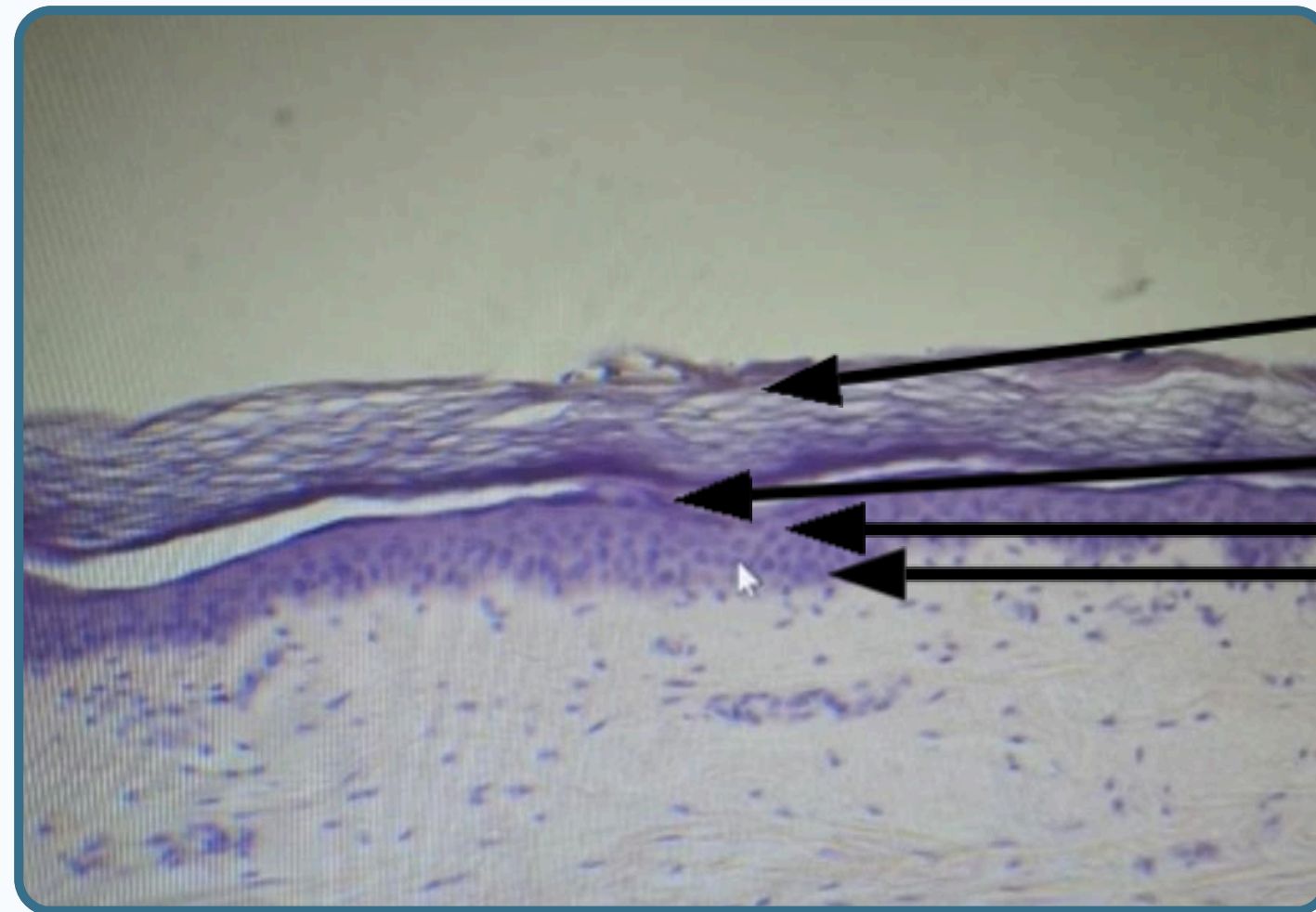


Dermis



Hypodermis

THE SKIN



Stratum corneum

Stratum granulosum

Stratum spinosum

Stratum basale

THE SKIN

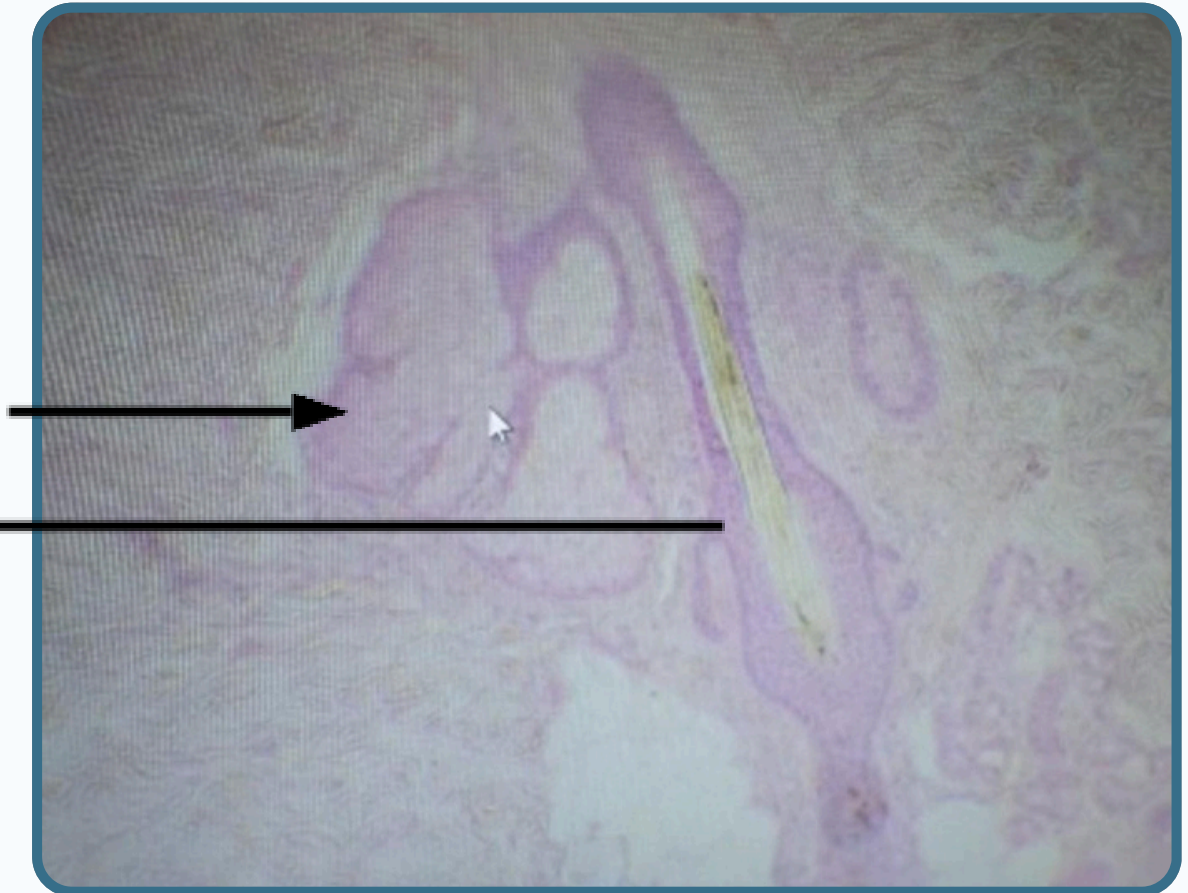


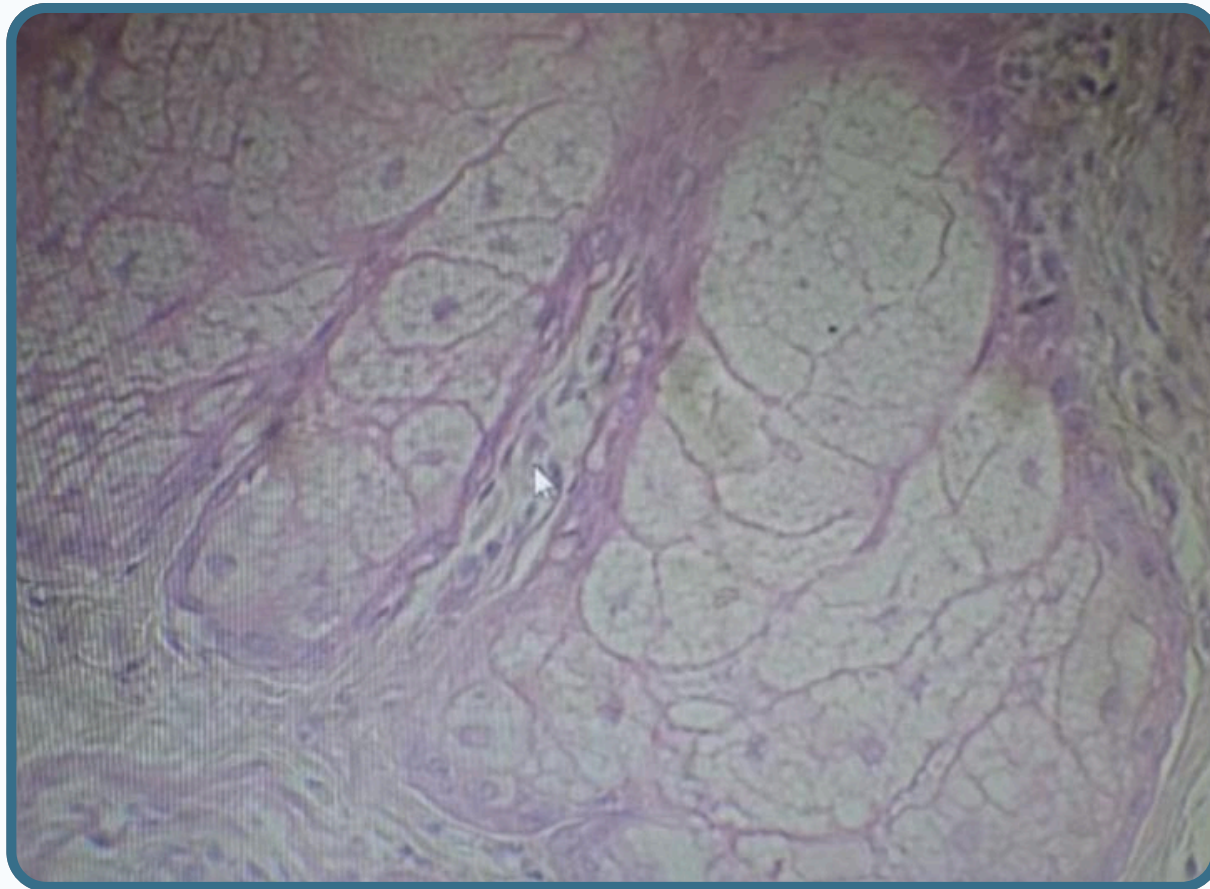
Melanocytes

- Represent between the stratum basale
- Responsible for melanin pigment

Sebaceous gland

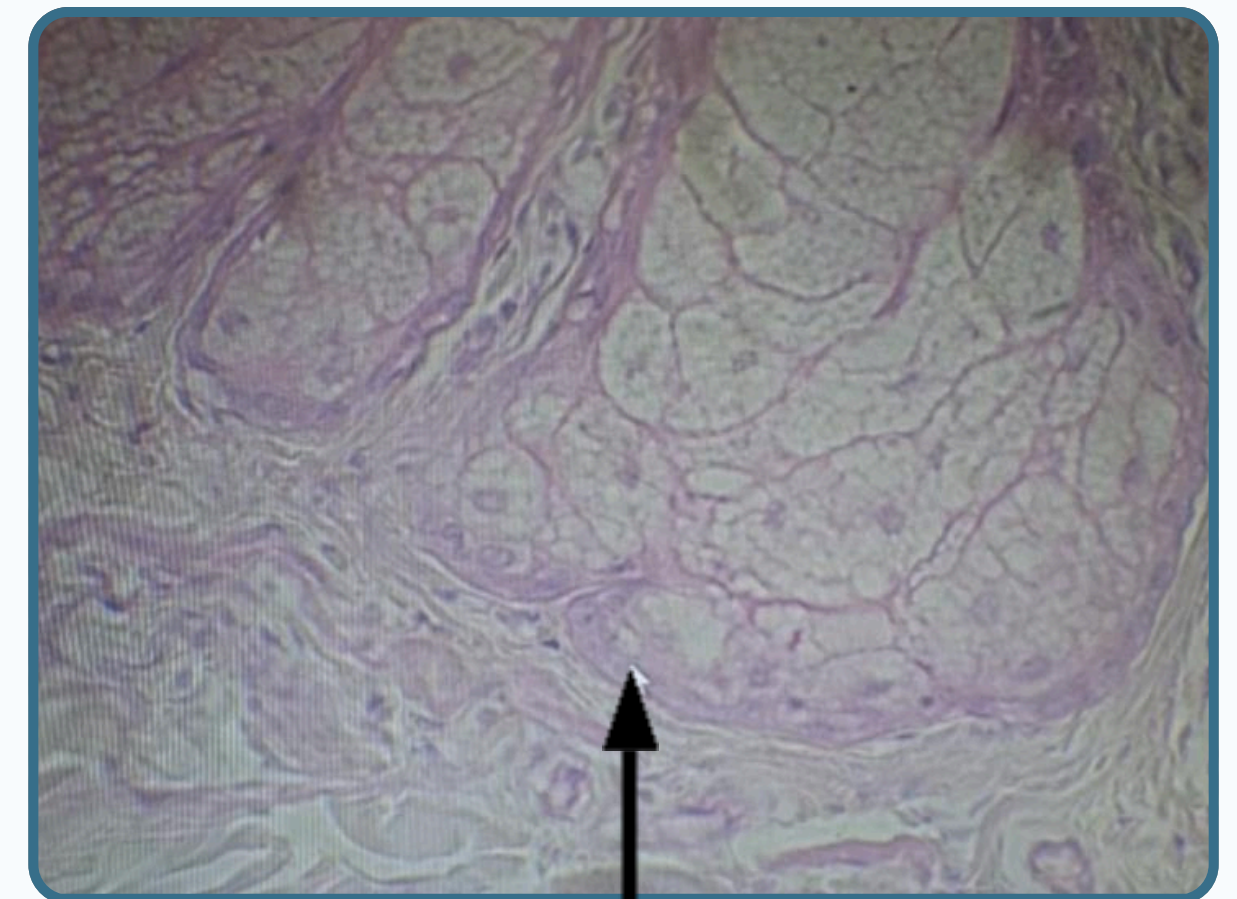
Hair follicles





Sebaceous gland

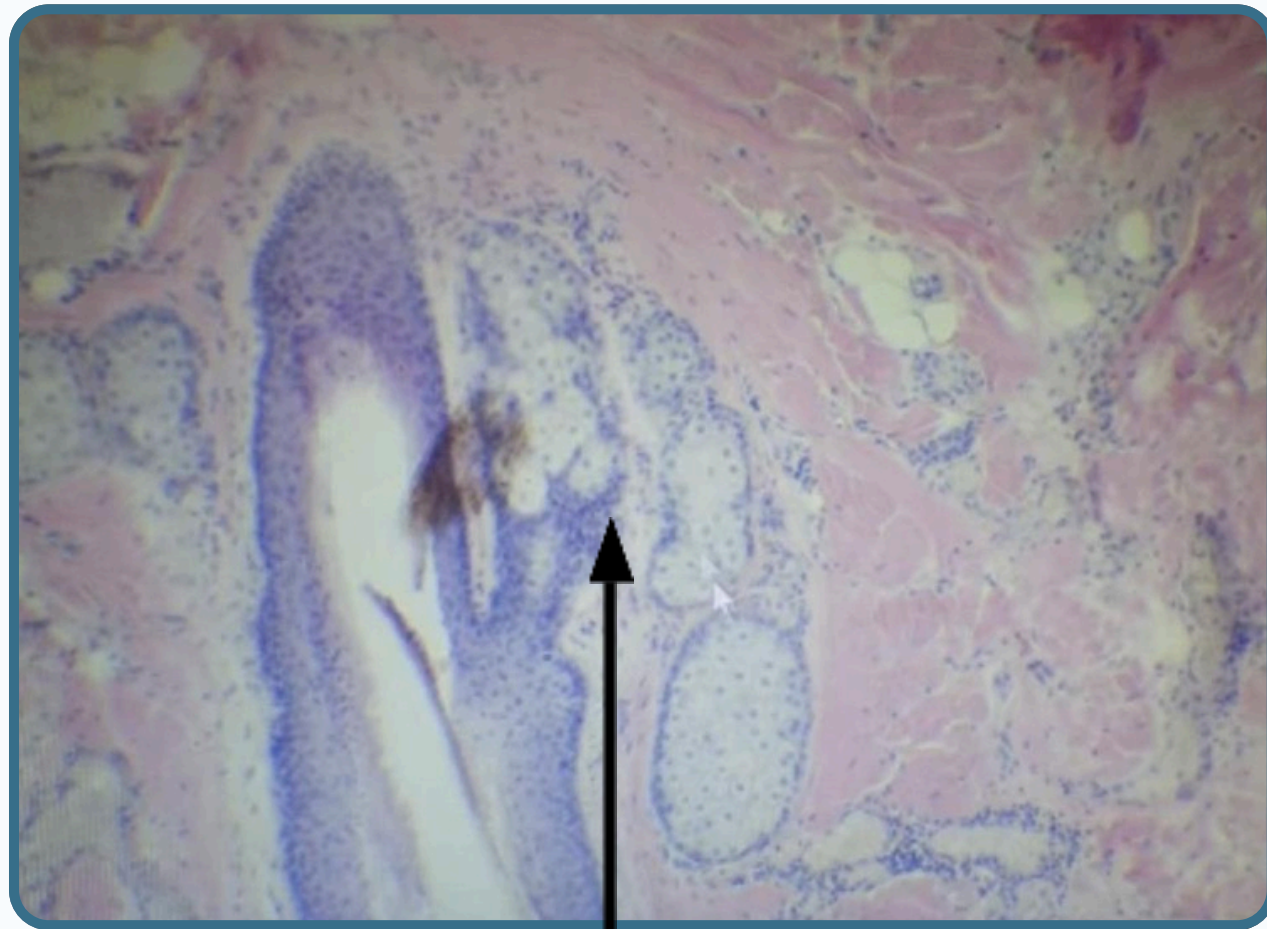
- Secreted the **Sebum**
- the cells lose through the holocrine secretion



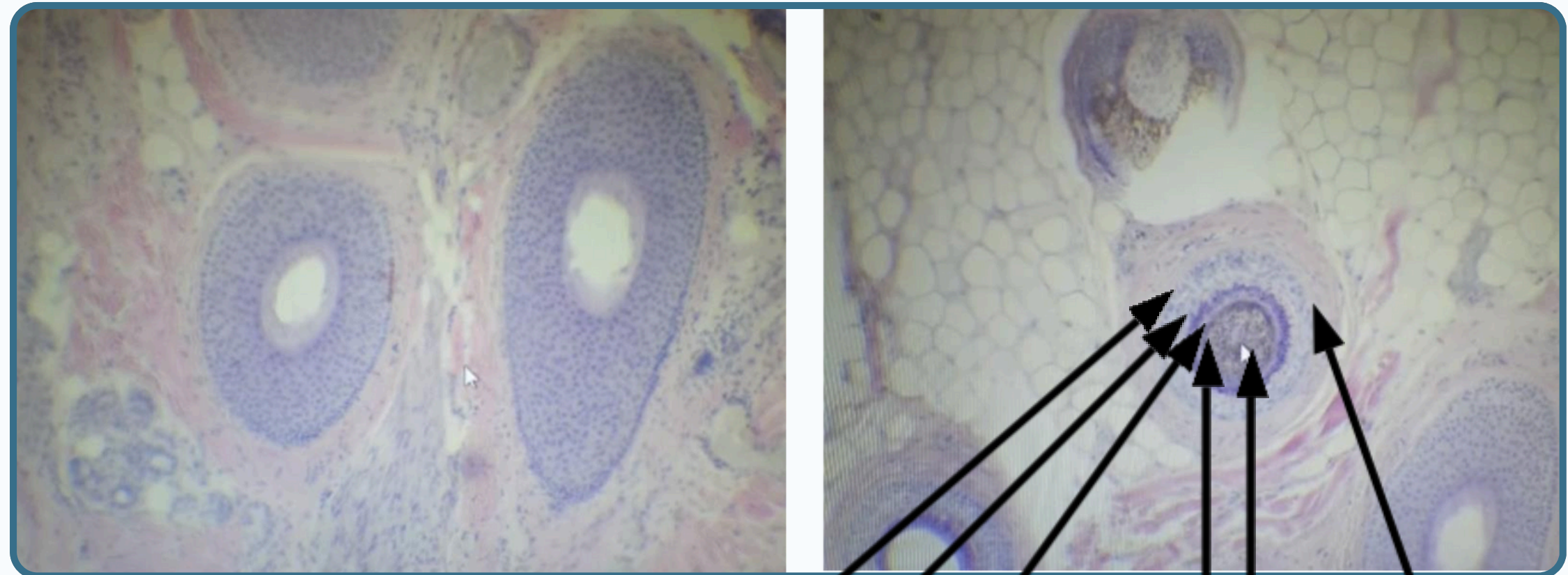
Germ cells

replace the cell that
lost during the secretion

THE SKIN



Sebaceous gland



Structure of the hair follicles

External root sheath

Internal root sheath

Cuticle

Cortex

Medulla

Glassy membrane

THANK YOU

EDITED BY



© ALL COPYRIGHT ARE RESERVED FOR
ARECH AND SATURN MEDIC

WWW.SATURNMEDIC.COM