

ANATOMY OF ABDOMEN

PRACTICAL LECTURE - 6 - BLOOD SUPPLY OF THE ABDOMEN

EDITED BY



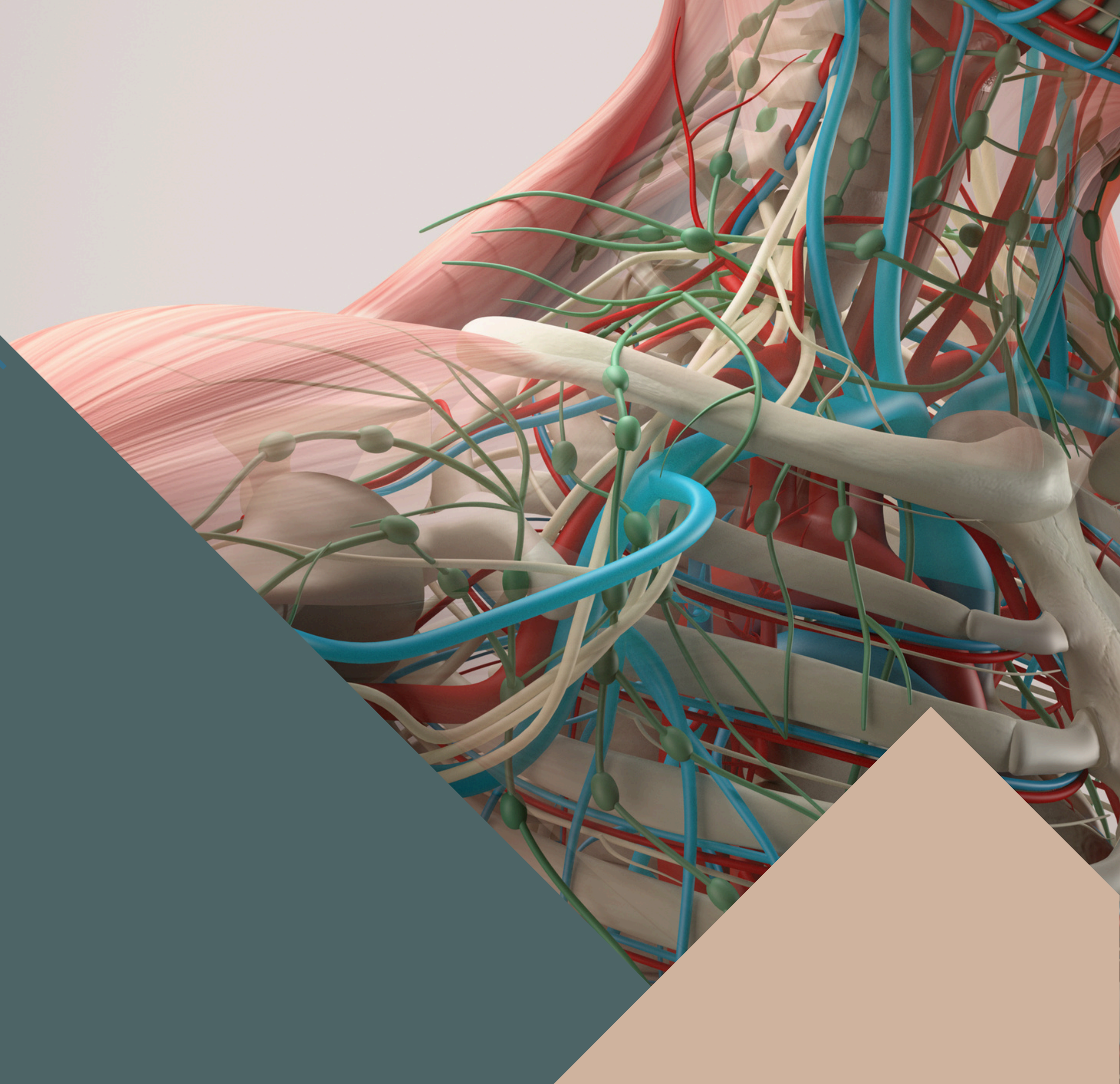
SATURN
MEDIC



ARECH

© ALL COPYRIGHT ARE RESERVED FOR
SATURN MEDIC AND ARECH

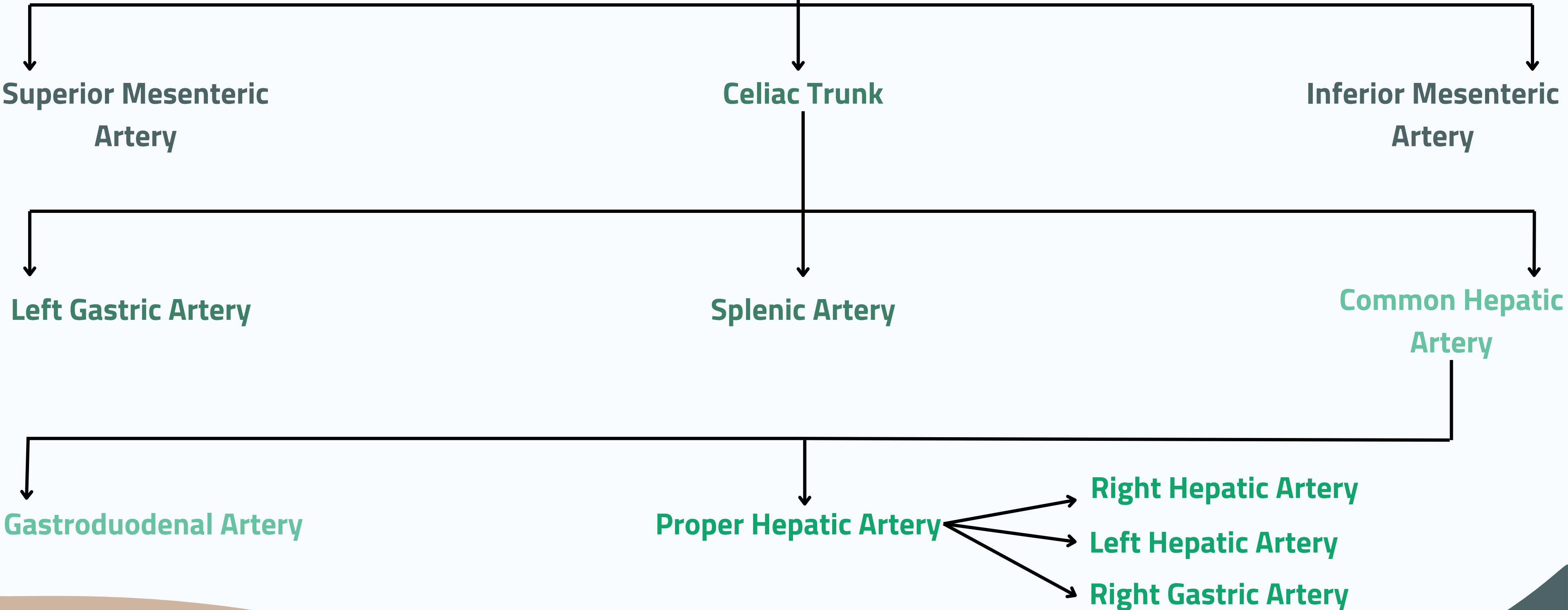
WWW.SATURNMEDIC.COM



ABDOMEN

ARTERIAL SUPPLY

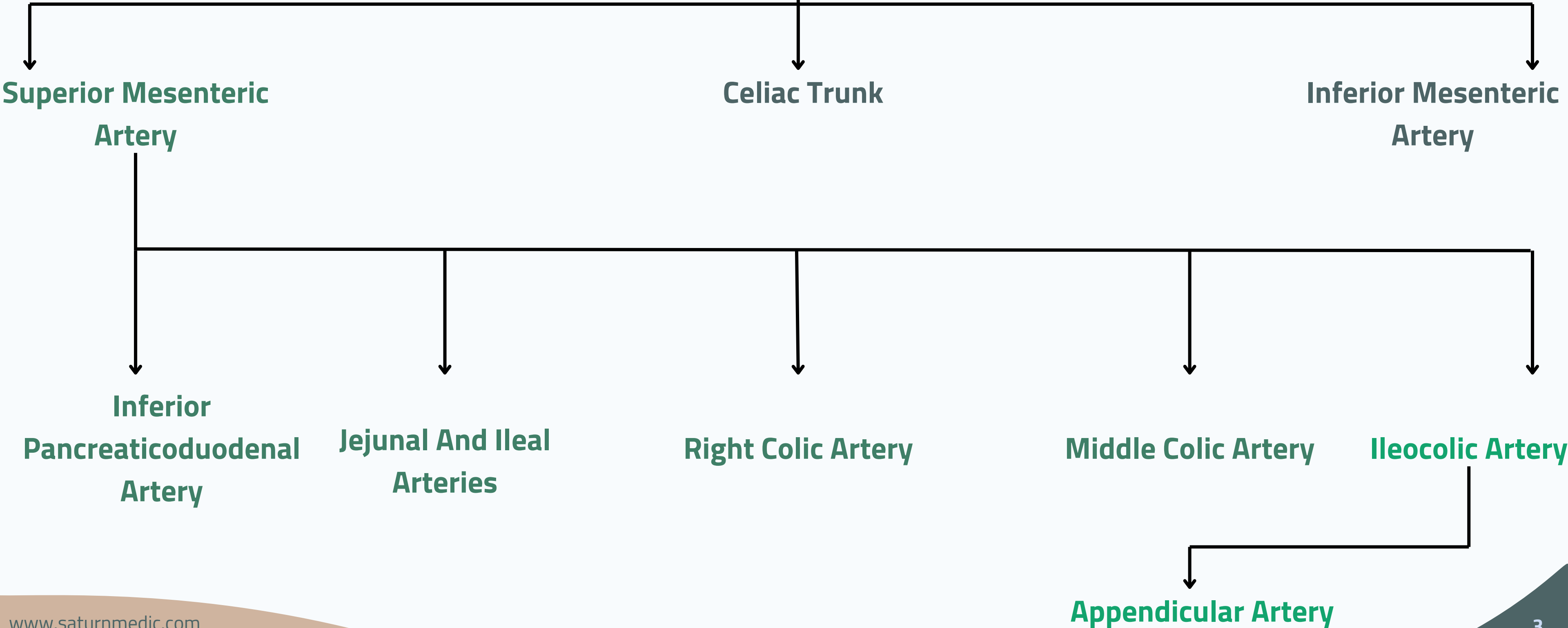
Abdominal Aorta



ABDOMEN

ARTERIAL SUPPLY

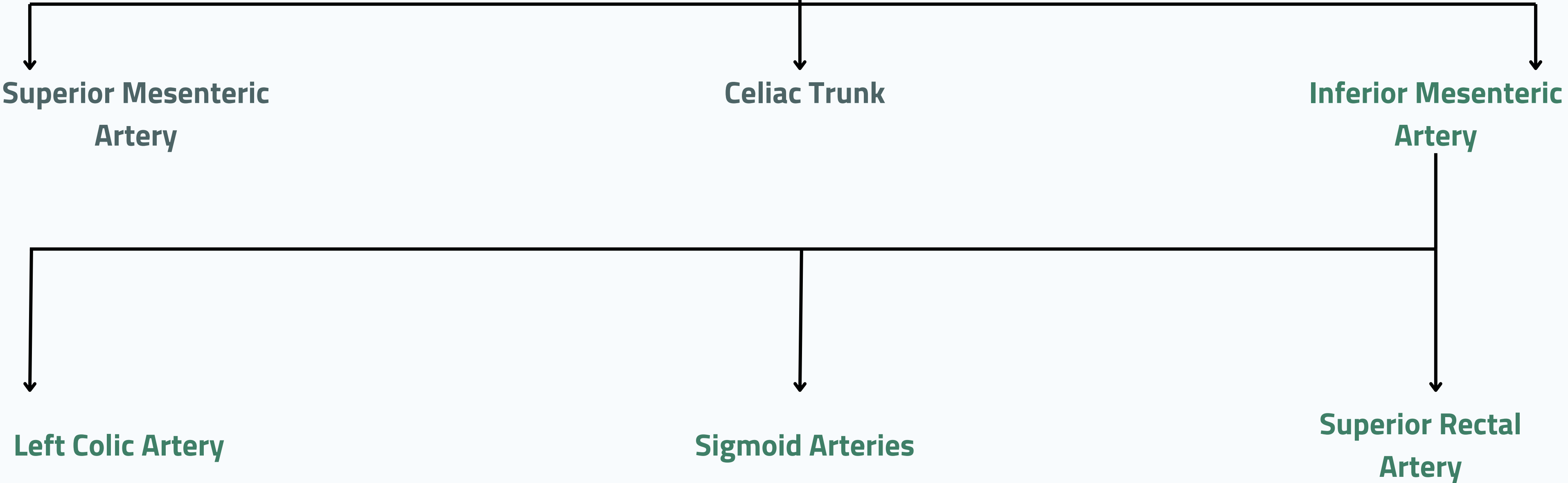
Abdominal Aorta



ABDOMEN

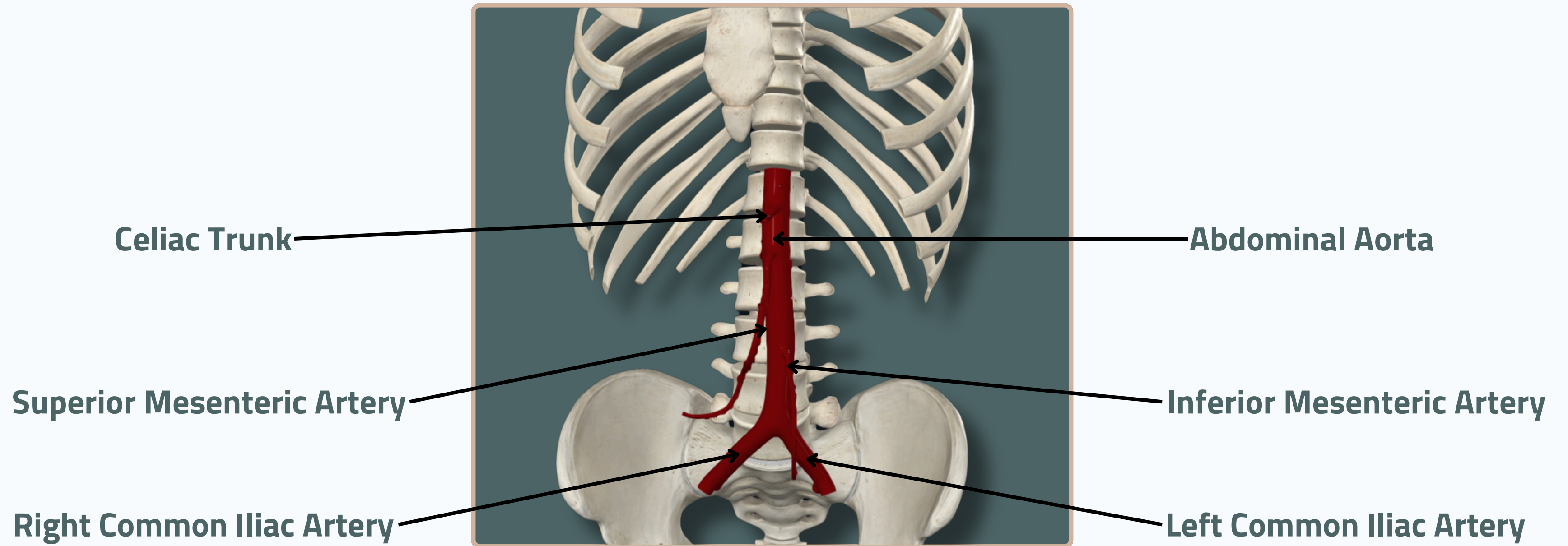
ARTERIAL SUPPLY

Abdominal Aorta



ABDOMEN

ARTERIAL SUPPLY



Anterior View

ABDOMEN

ARTERIAL SUPPLY

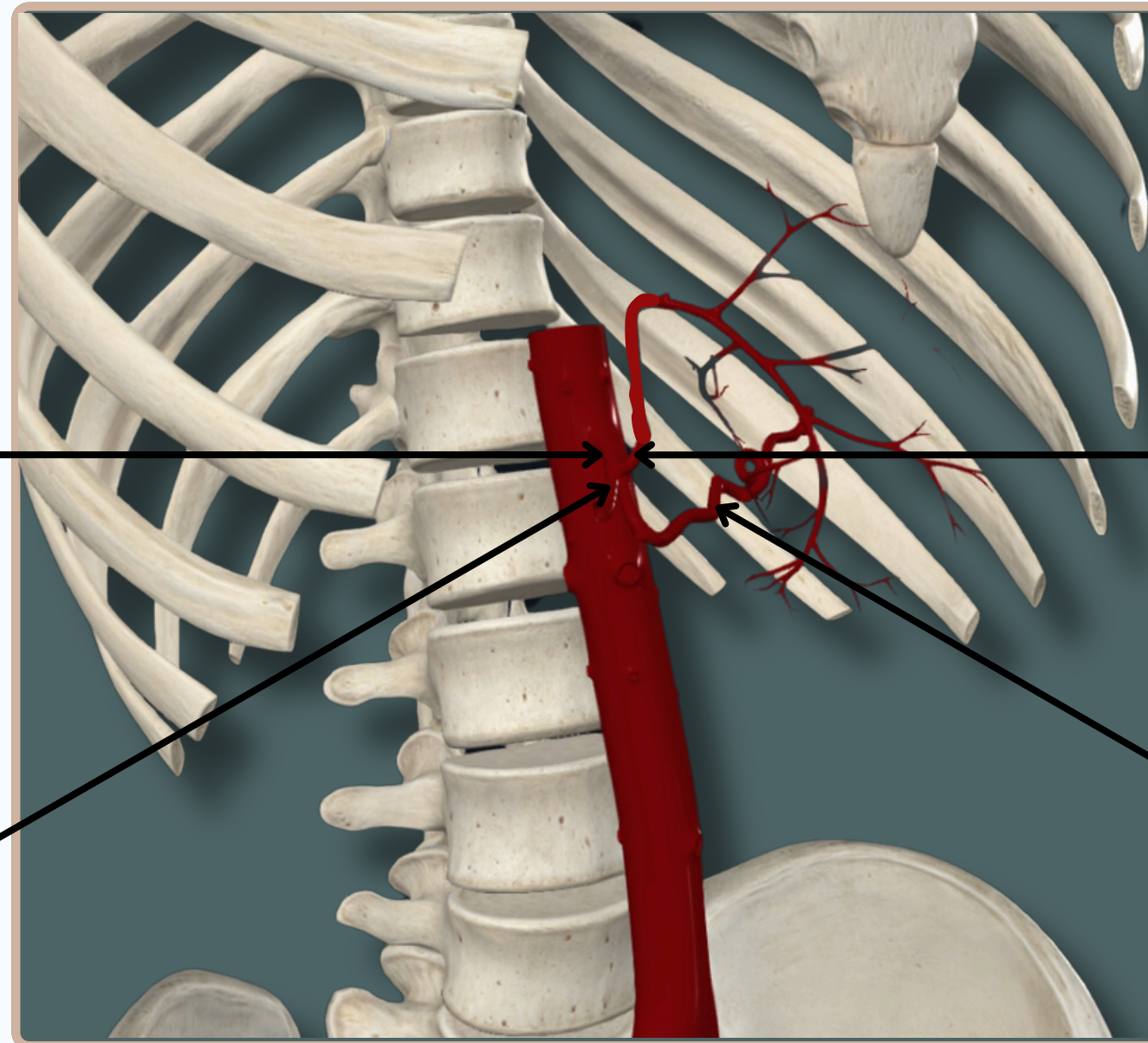


Celiac Trunk

Left Gastric Artery

Common Hepatic Artery

Splenic Artery



Anterior View

ABDOMEN

ARTERIAL SUPPLY



Right Hepatic Artery

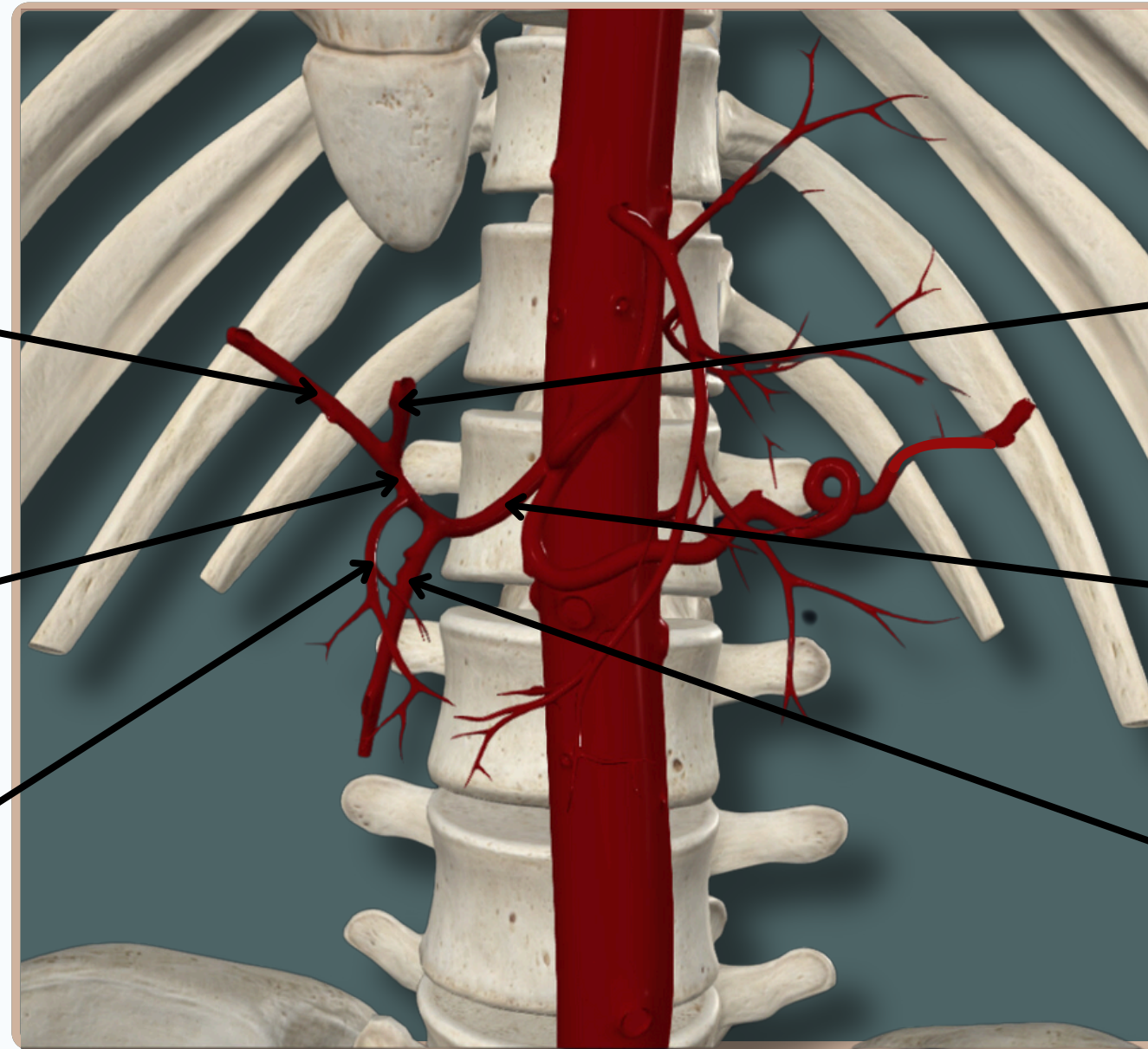
Left Hepatic Artery

Proper Hepatic Artery

Common Hepatic Artery

Right Gastric Artery

Gastrooduodenal Artery



Anterior View

ABDOMEN

ARTERIAL SUPPLY



Superior Mesenteric Artery

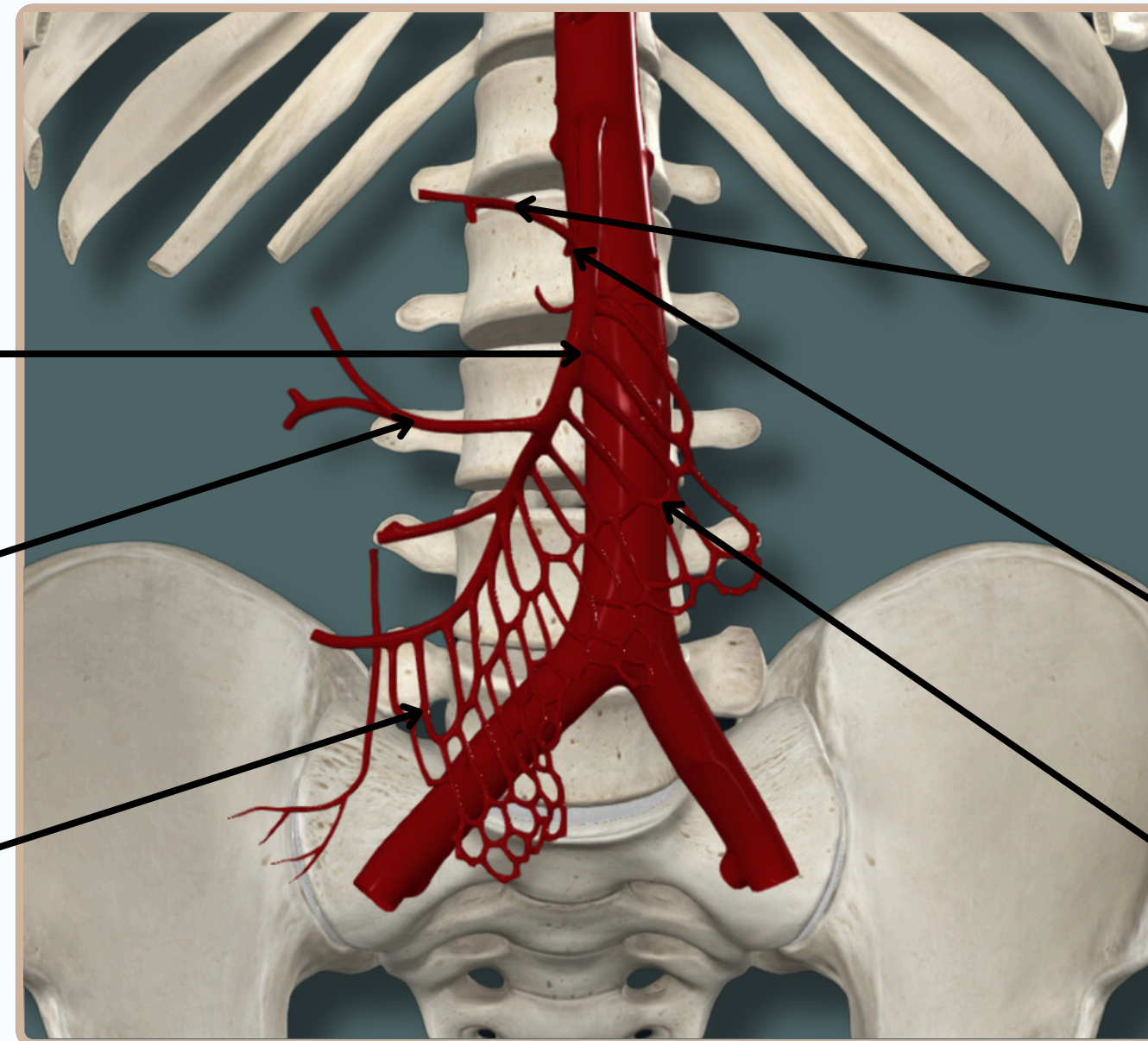
Right Colic Artery

Ileal Arteries

Middle Colic Artery

Inferior Pancreaticoduodenal Artery

Jejunal Arteries



Anterior View



ABDOMEN

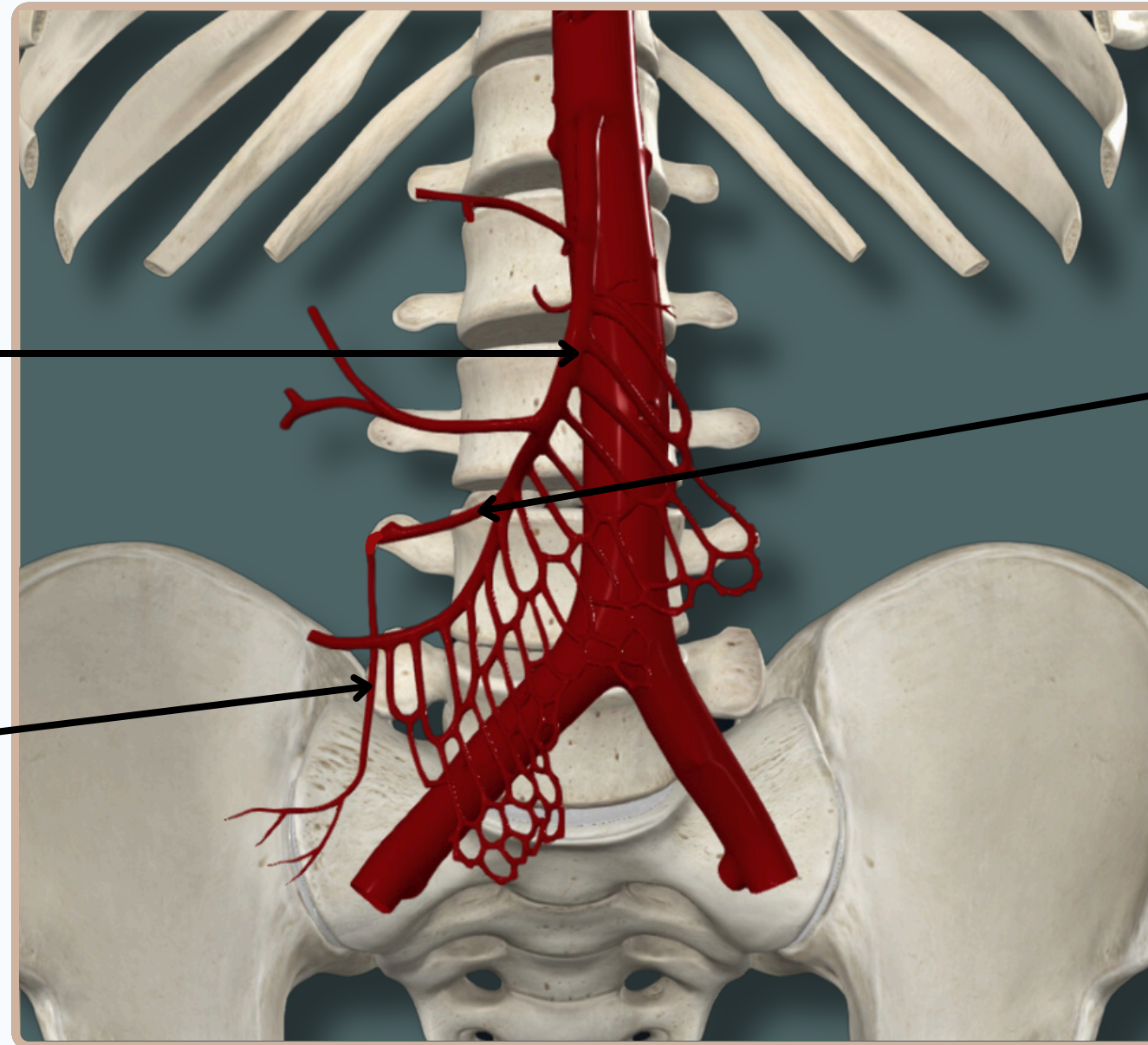


ARTERIAL SUPPLY

Superior Mesenteric Artery

Ileocolic Artery

Appendicular Artery



Anterior View

ABDOMEN

ARTERIAL SUPPLY

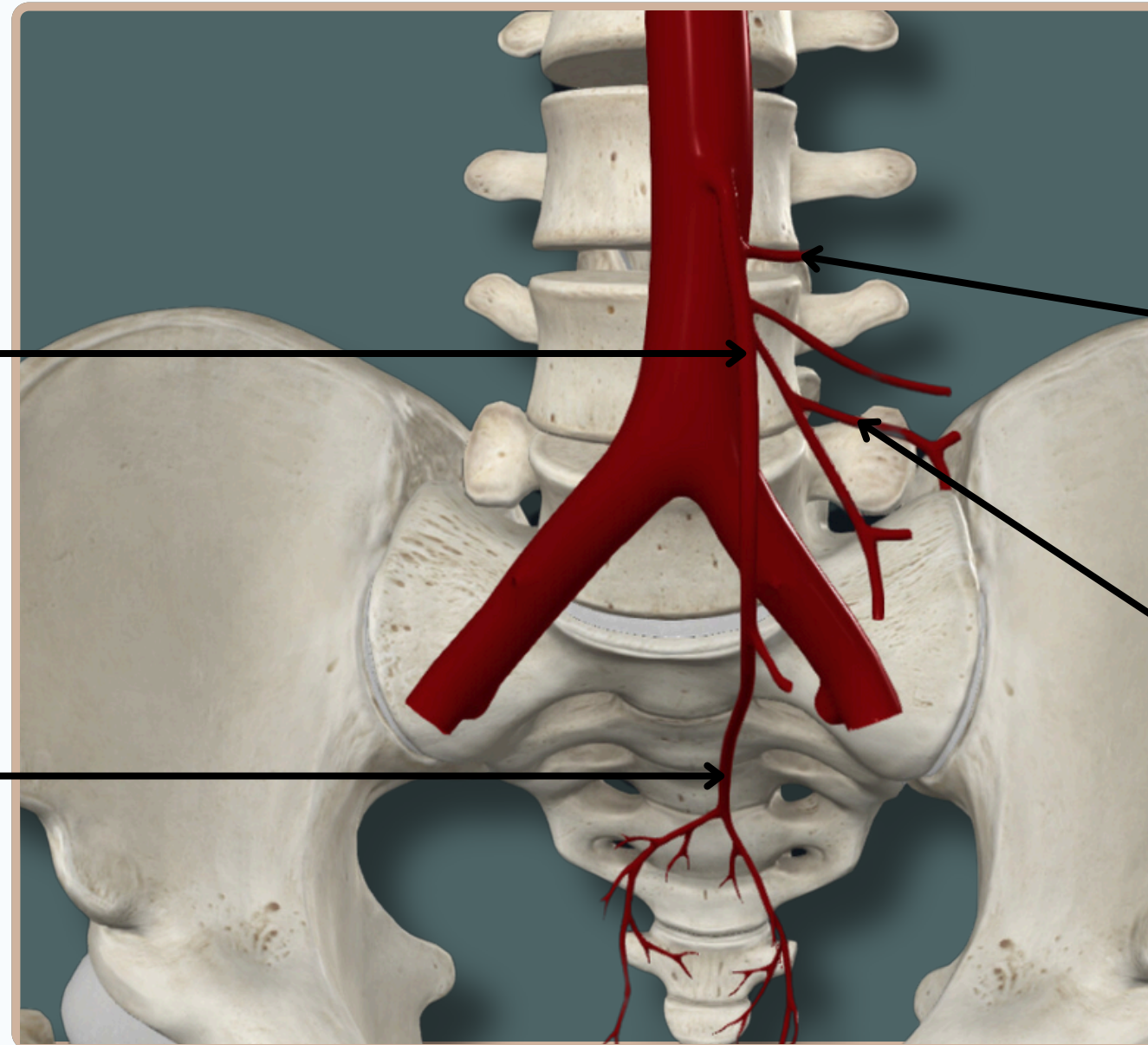


Inferior Mesenteric Artery

Left Colic Artery

Superior Anorectal Artery

Sigmoid Arteries



Anterior View



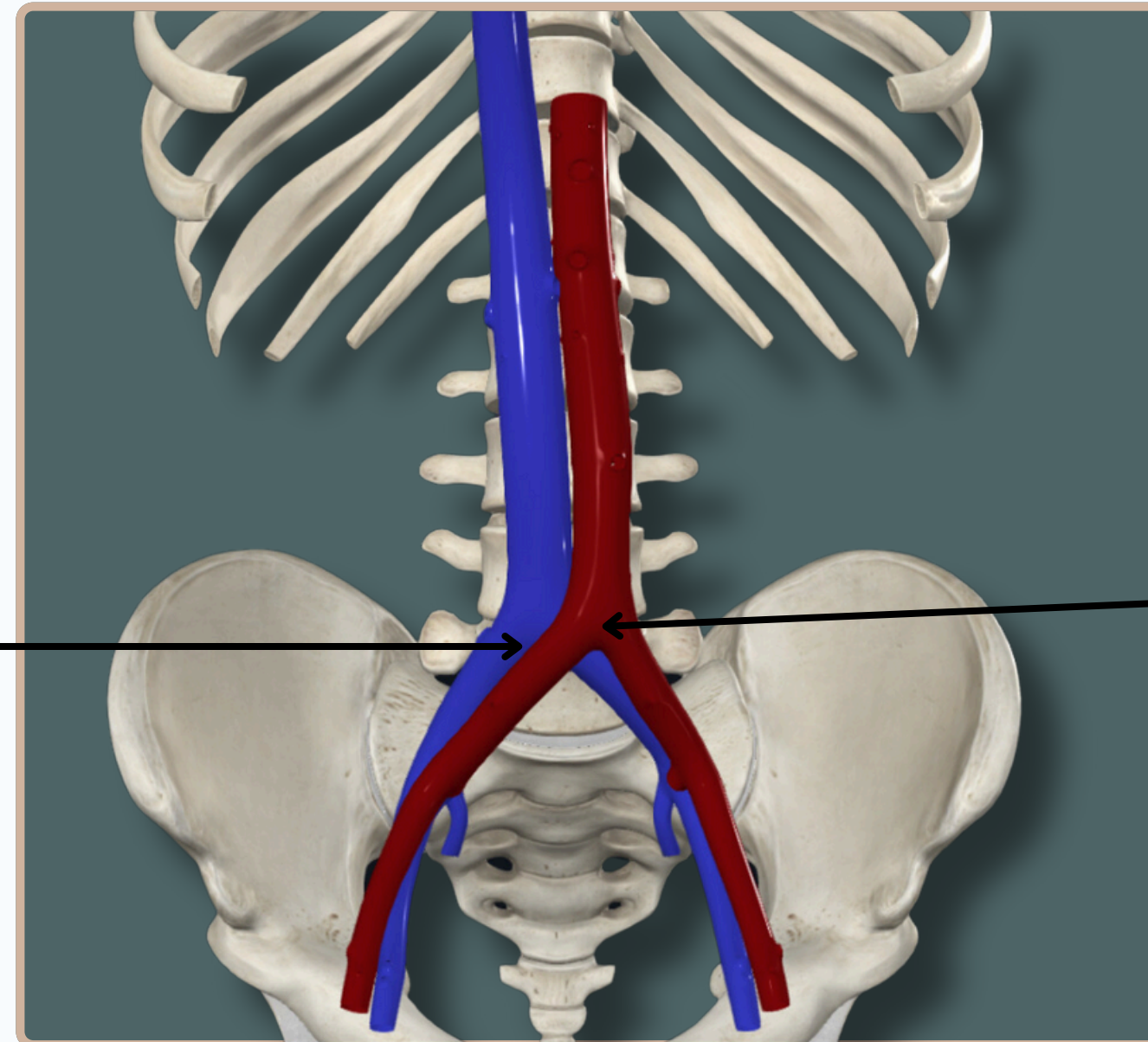
ABDOMEN



ARTERIAL SUPPLY

Inferior Vena Cava

The **Bifurcation** Of The Inferior Vena Cava (**IVC**) Occurs At A **Slightly Lower Level**, Usually Around The **L5** Vertebra, Where It **Forms From** The **Union** Of The **Left** And **Right** Common Iliac Veins



Abdominal Aorta

The **Bifurcation** Of The Abdominal Aorta Occurs At The Level Of The **L4** Vertebra, Where It **Divides** Into The **Left** And **Right Common Iliac** Arteries

Anterior View

THANK YOU

EDITED BY



SATURN
MEDIC



ARECH

© ALL COPYRIGHT ARE RESERVED FOR
SATURN MEDIC AND ARECH

WWW.SATURNMEDIC.COM