

ANATOMY OF THORAX REGION

PRACTICAL LECTURE - 1 -

OSTEOLOGY / PART 1

INTRODUCTION+STERNUM+RIBS+VERTEBRAE

EDITED BY



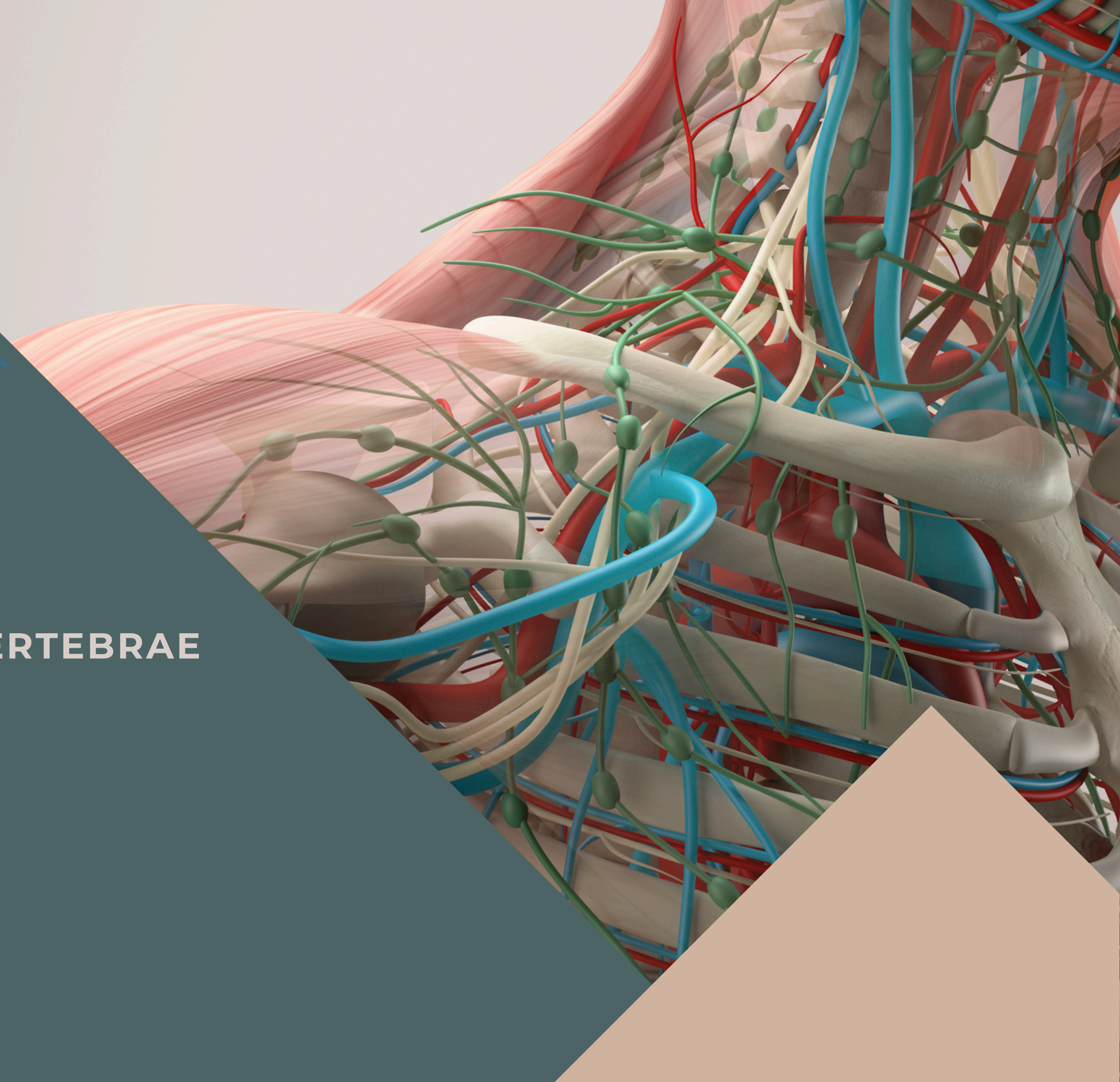
SATURN
MEDIC



ARECH

© ALL COPYRIGHT ARE RESERVED FOR
SATURN MEDIC AND ARECH

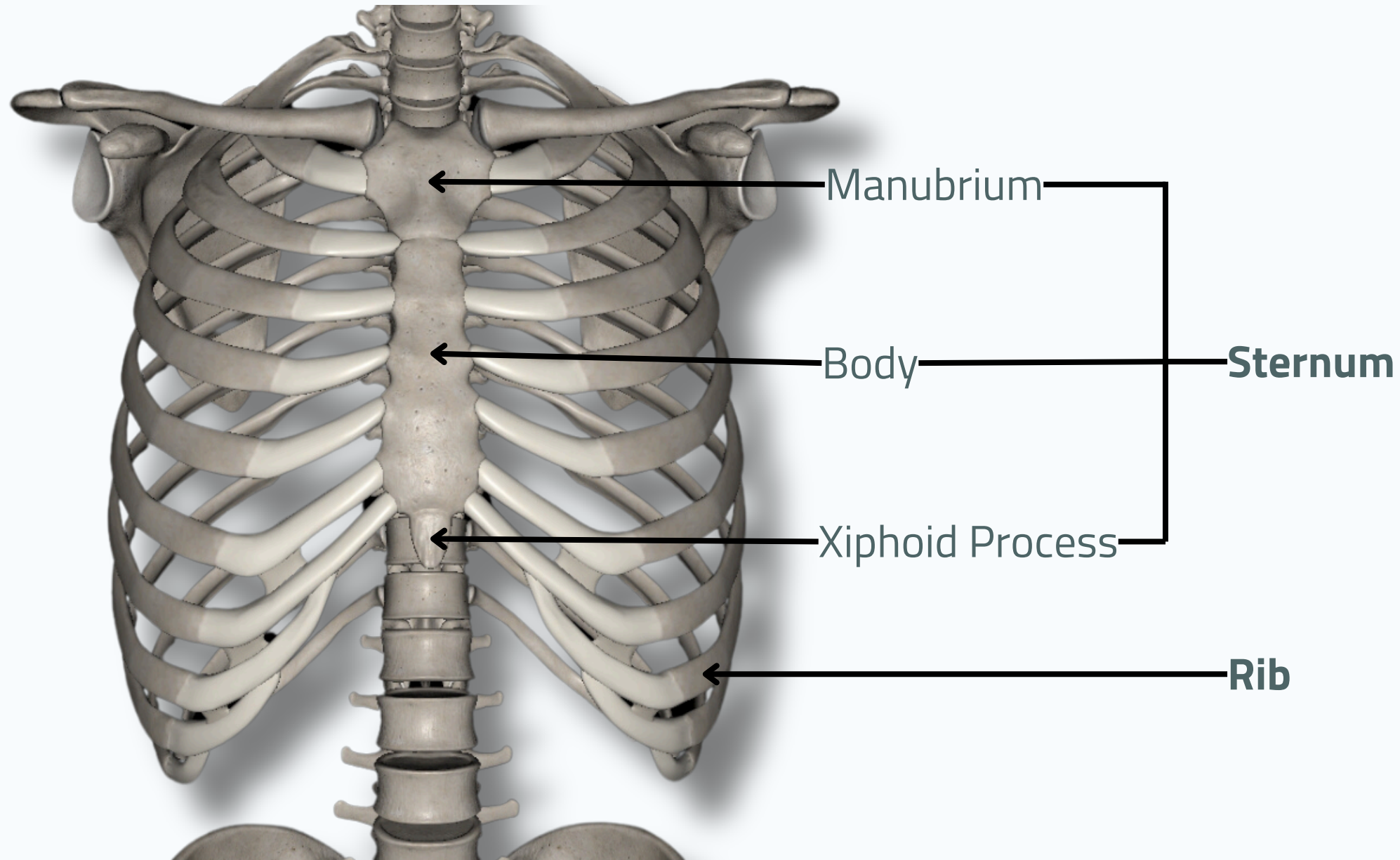
WWW.SATURNMEDIC.COM



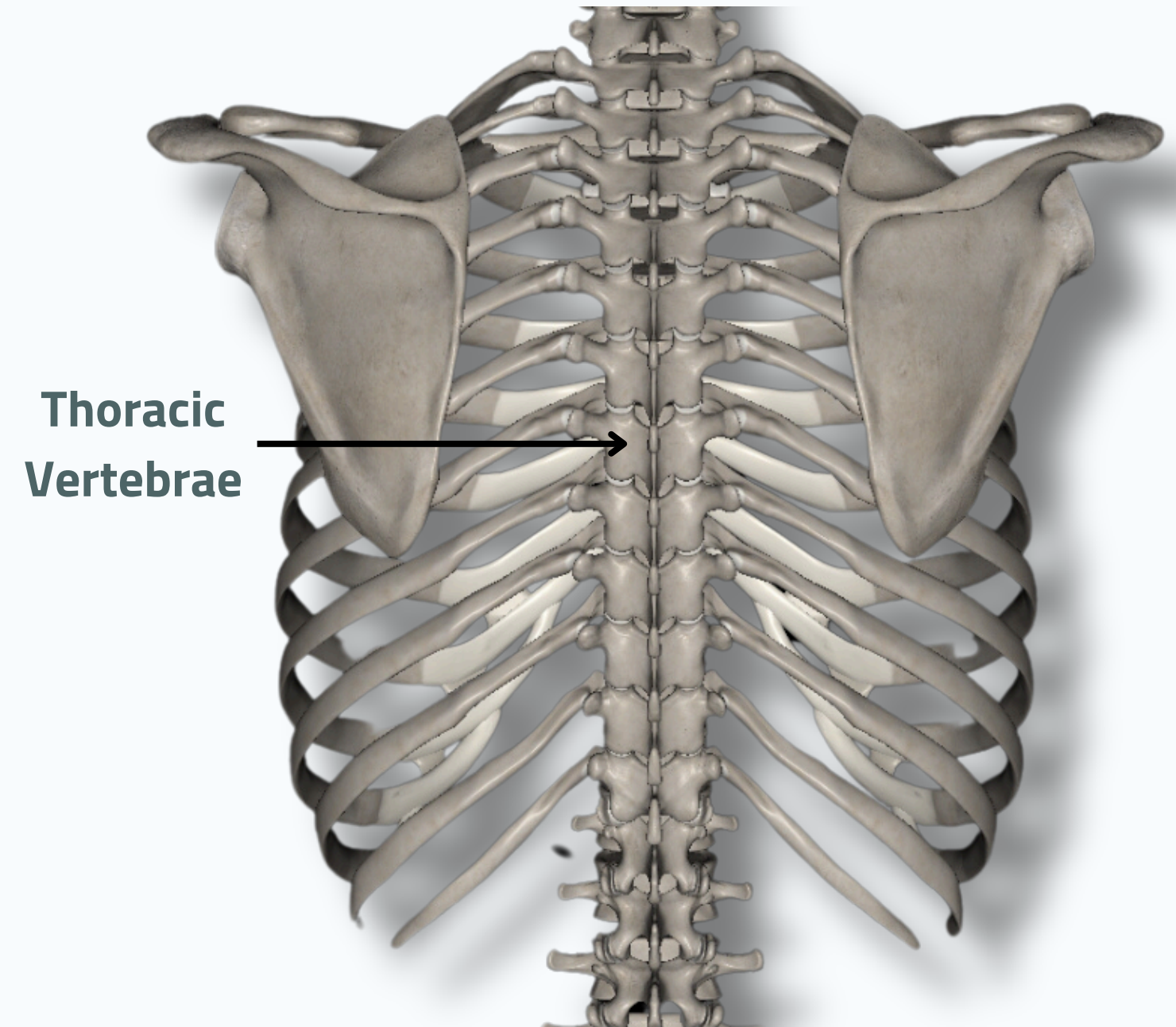


OSTEOLOGY

INTRODUCTION



Anterior



Posterior

OSTEOLOGY

STERNUM

Jugular Notch

Clavicular Notch

Costal Notch

Manubrium

Sternal Angle

Body

Xiphoid Process

Clavicular Notch

1st Costal Notch

2nd Costal Notch

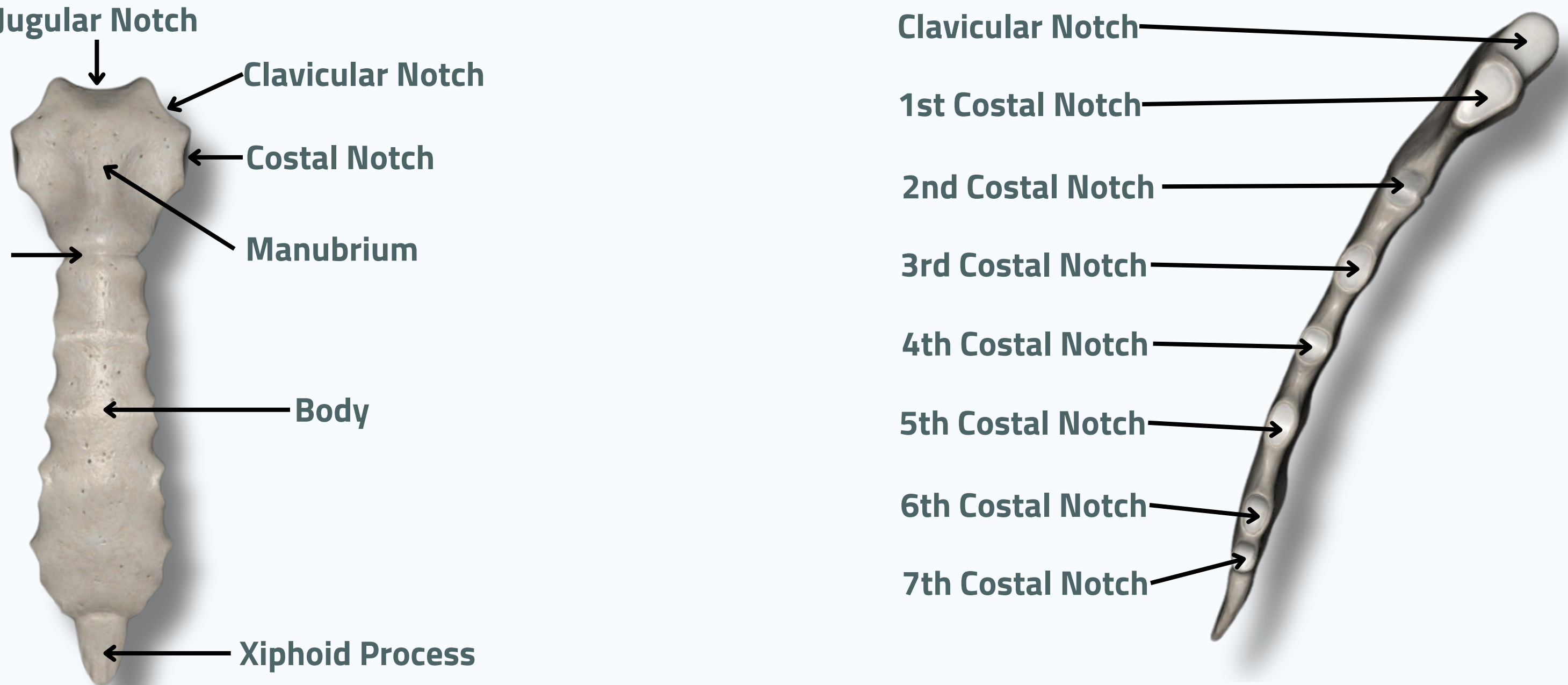
3rd Costal Notch

4th Costal Notch

5th Costal Notch

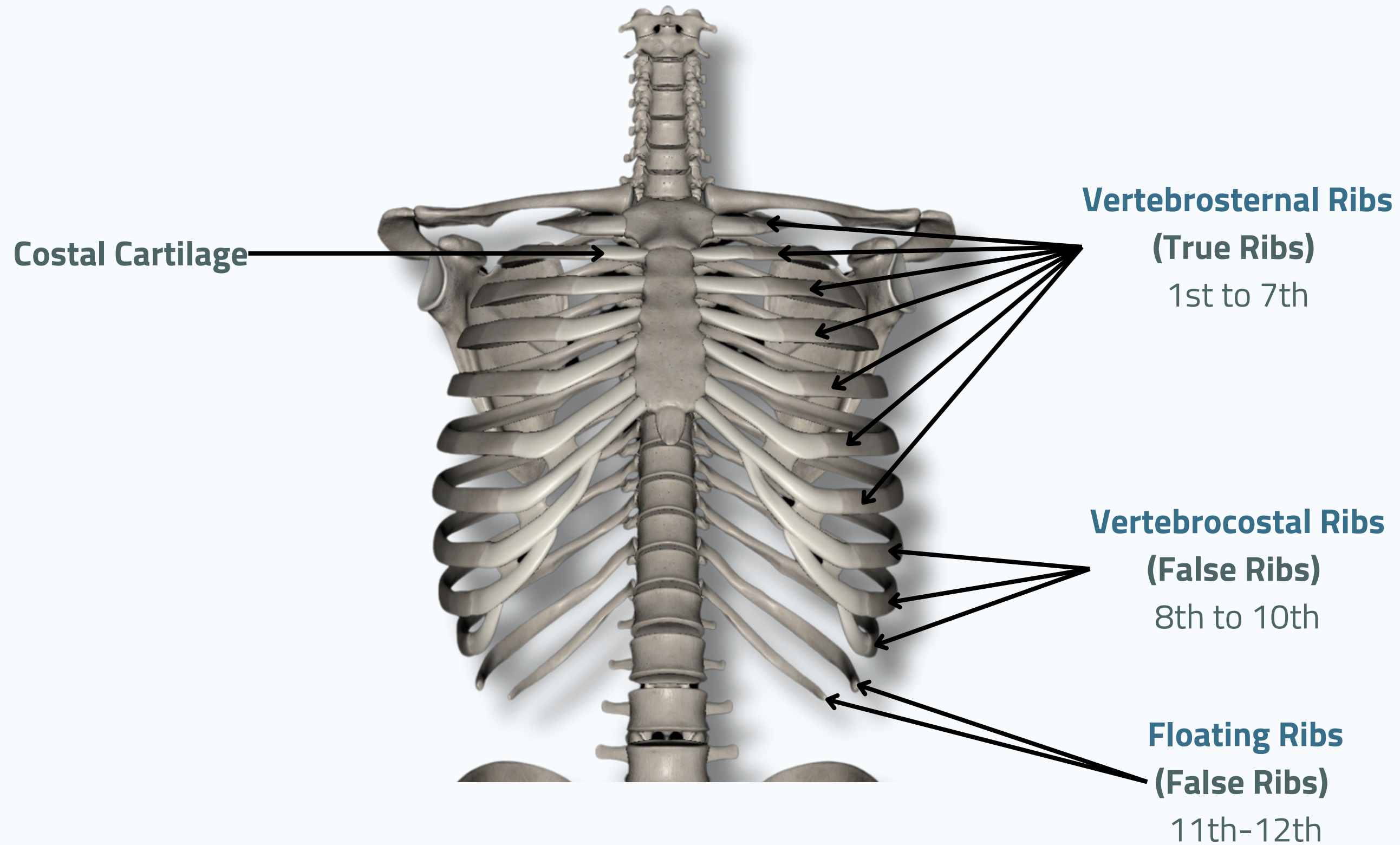
6th Costal Notch

7th Costal Notch



OSTEOLOGY

RIBS





-The Typical Thoracic Ribs Which Are 3-9 Have Common Features :

- **The head** of a typical rib is wedge-shaped and has two articular facets.
- **The neck** of the rib is a short, flattened
- **The shaft** of a typical rib is thin, flat, and curved
- **Typical ribs** progressively **increase** in **length** from the 3rd to the 7th rib, then decrease again from the 8th to the 12th rib.



Lateral View of 3rd Rib



-The ATypical Thoracic Ribs Which Are :

- 1st Rib
- 2nd Rib
- 10th Rib
- 11th Rib
- 12th Rib



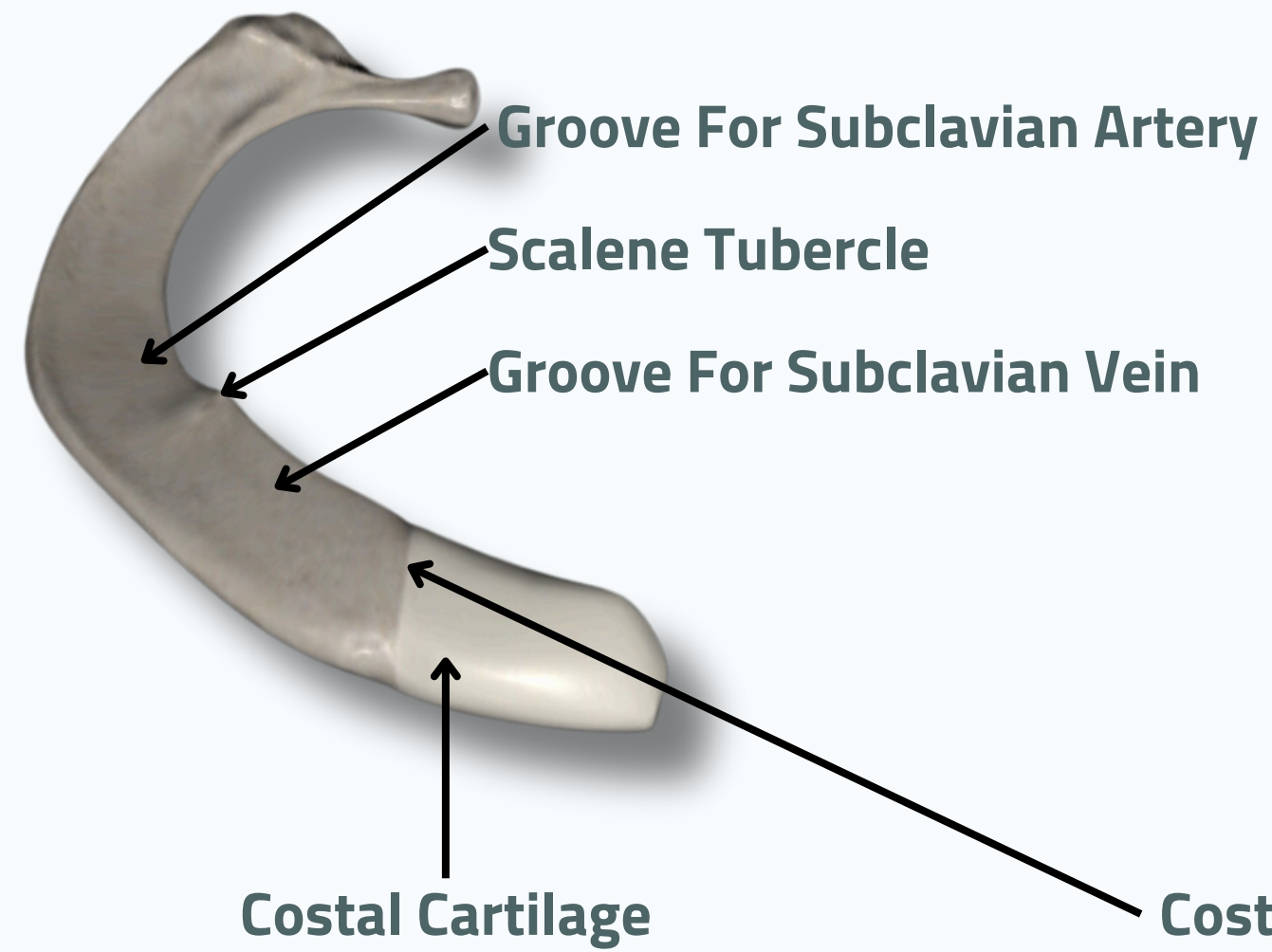
Lateral View of 12th Rib



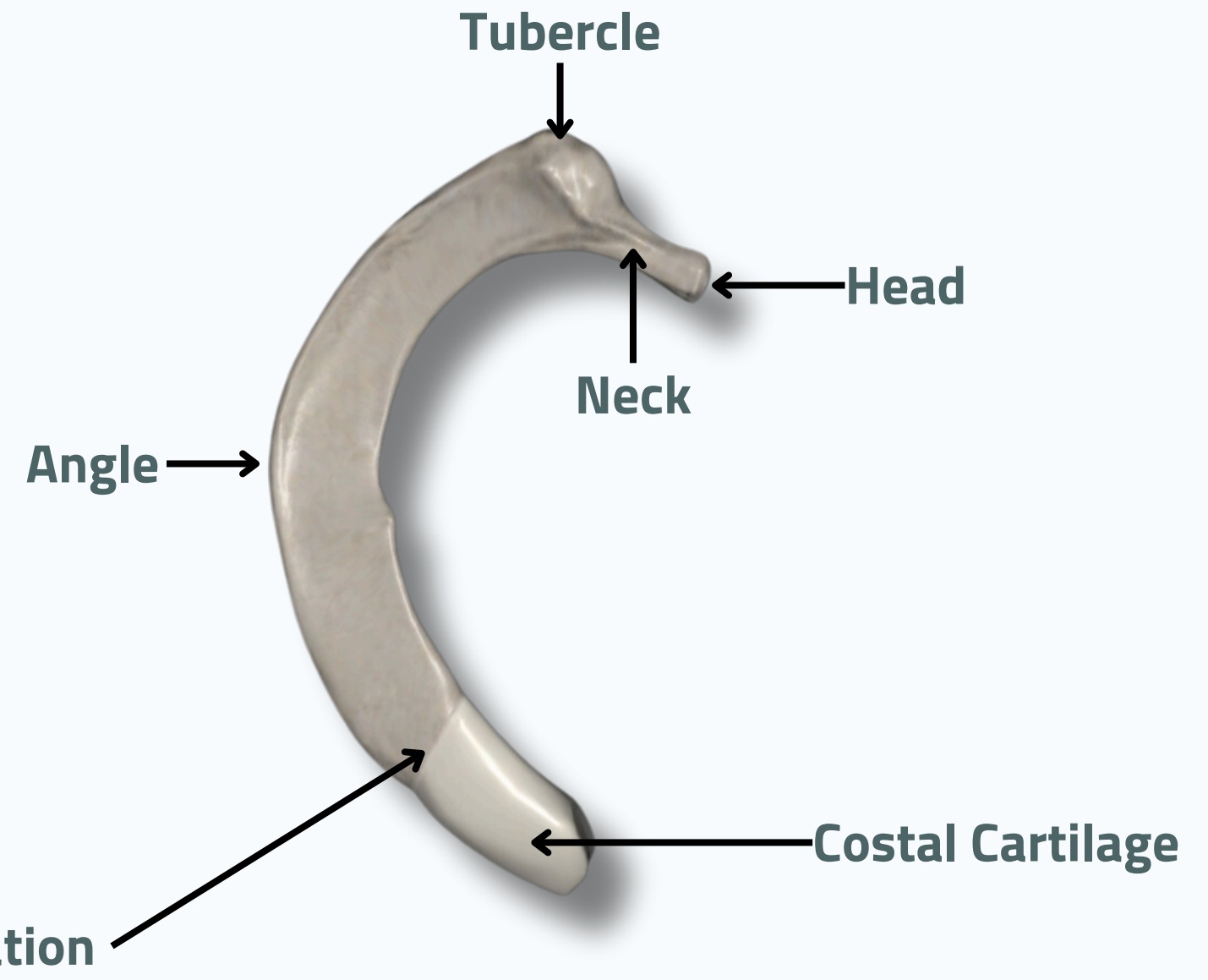
OSTEOLOGY

RIBS

1ST RIB



Anterior



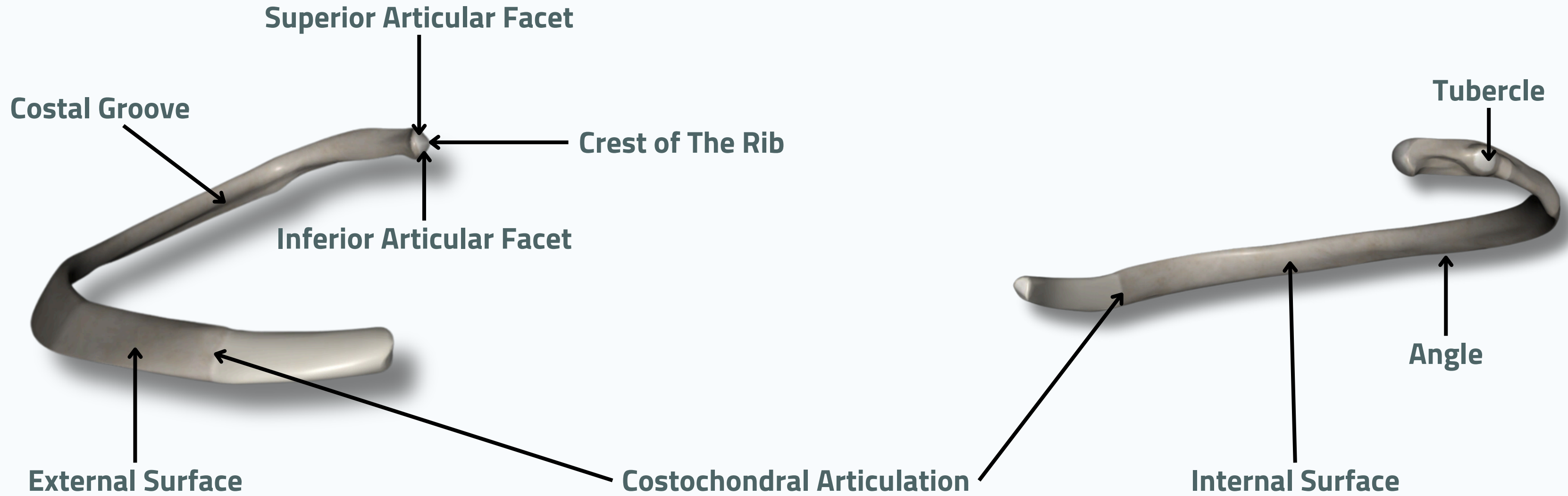
Superior



OSTEOLOGY

RIBS

3RD RIB



Anterior

Posterior

OSTEOLOGY

THE GENERAL STRUCTURE OF A VERTEBRA



Superior View



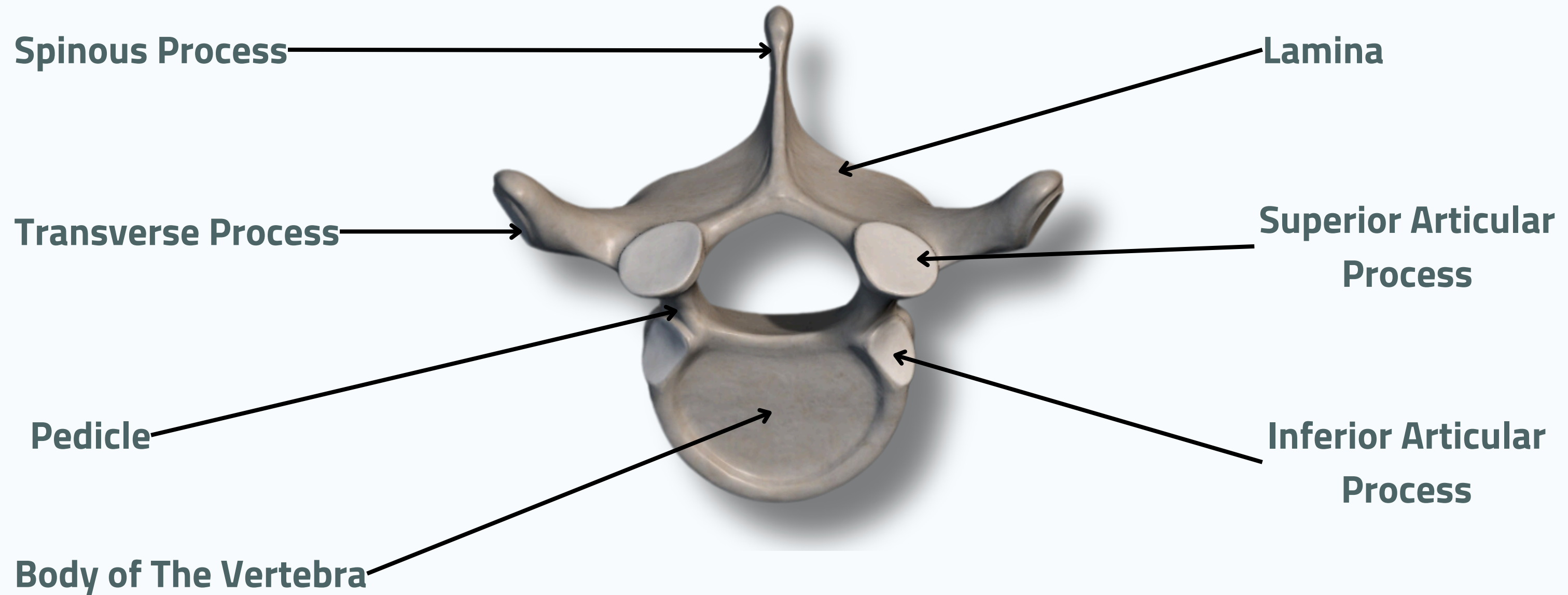
Inferior View



OSTEOLOGY



THE GENERAL STRUCTURE OF A VERTEBRA



Superior View



OSTEOLOGY



THE GENERAL STRUCTURE OF A VERTEBRA

Body of The Vertebra

Pedicle

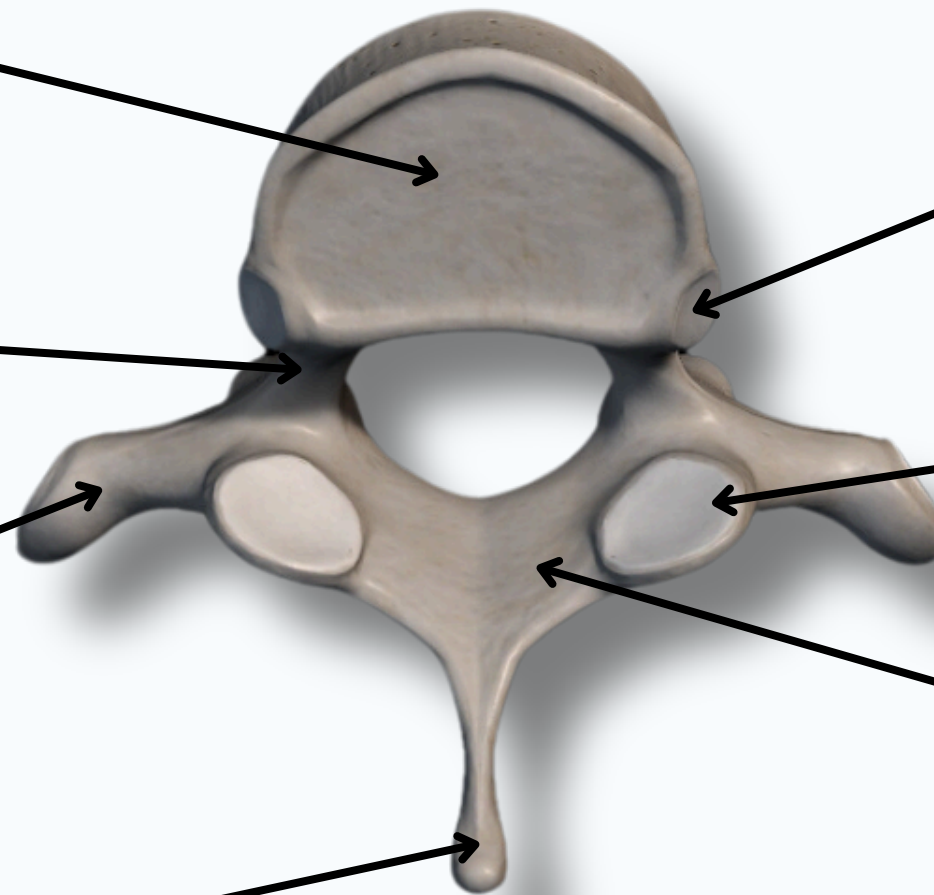
Transverse Process

Spinous Process

**Inferior Articular
Process**

**Superior Articular
Process**

Lamina



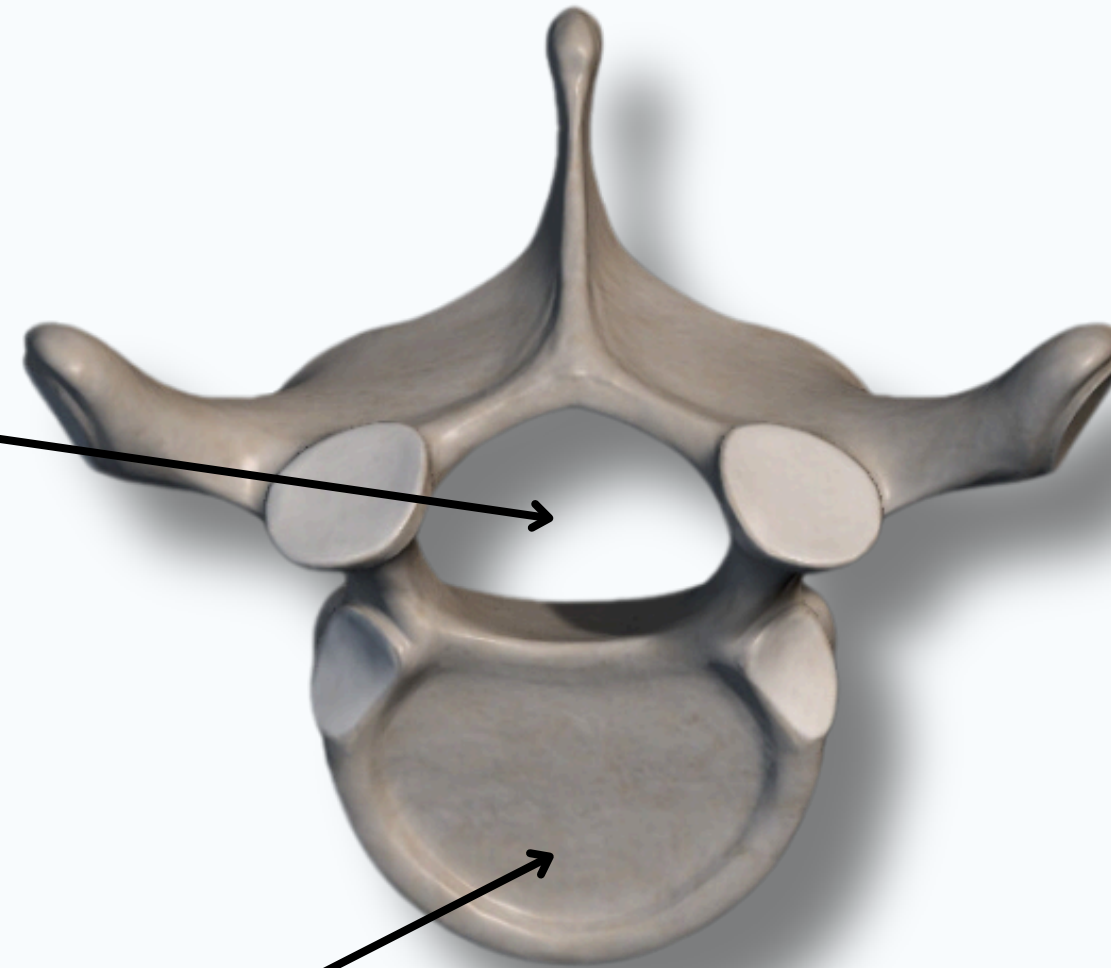
Inferior View



TYPICAL THORACIC VERTEBRA

-The Typical Thoracic Vertebra Which Are T2-T8
Have Common Features :

- **The vertebral foramen** is circular and relatively small compared to cervical and lumbar vertebrae
- **The spinous processes** are long, slender, and directed downward
- Each **transverse process** has a costal facet for articulation with the tubercle of the corresponding rib.
- **The vertebral body** of typical thoracic vertebrae is heart-shaped



**Superior View of T3
Typical Vertebra**



ATYPICAL THORACIC VERTEBRA

-The Atypical Thoracic Vertebra Which Are :

- **T1**
- **T9**
- **T10**
- **T11**
- **T12**



**T1 Vertebra Is More Similar To
Cervical Vertebra**



-The Atypical Thoracic Vertebra Which Are :

- T1
- T9
- T10
- T11
- T12



**T12 Vertebra Is More Similar
To Lumbar Vertebra**



OSTEOLOGY






DIFFERENCES BETWEEN TYPES OF VERTEBRA

Features	Cervical Vertebra	Thoracic Vertebra	Lumbar Vertebra
Size	Small	Larger	Largest
Foramina	Large and triangular	Small and circular	Large and triangular
Spinous Process	Short and Bifid	Long, Slender and Downward	Broad, Thick and Blunt
Transverse Process	Small	Fairly Large	Large and Blunt
Size of Intervertebral Disk	Thick	Thin	Thickest
Articular Facet of Ribs	Absent	Present	Absent



DIFFERENCES BETWEEN TYPES OF VERTEBRA

Cervical Vertebra	Thoracic Vertebra	Lumbar Vertebra
		

THANK YOU

EDITED BY



SATURN
MEDIC



ARECH

© ALL COPYRIGHT ARE RESERVED FOR
SATURN MEDIC AND ARECH

WWW.SATURNMEDIC.COM