

ANATOMY OF ABDOMEN

PRACTICAL LECTURE - 2 -

UPPER GIT

(ESOPHAGUS + STOMACH + PANCREAS +
SPLEEN)

EDITED BY



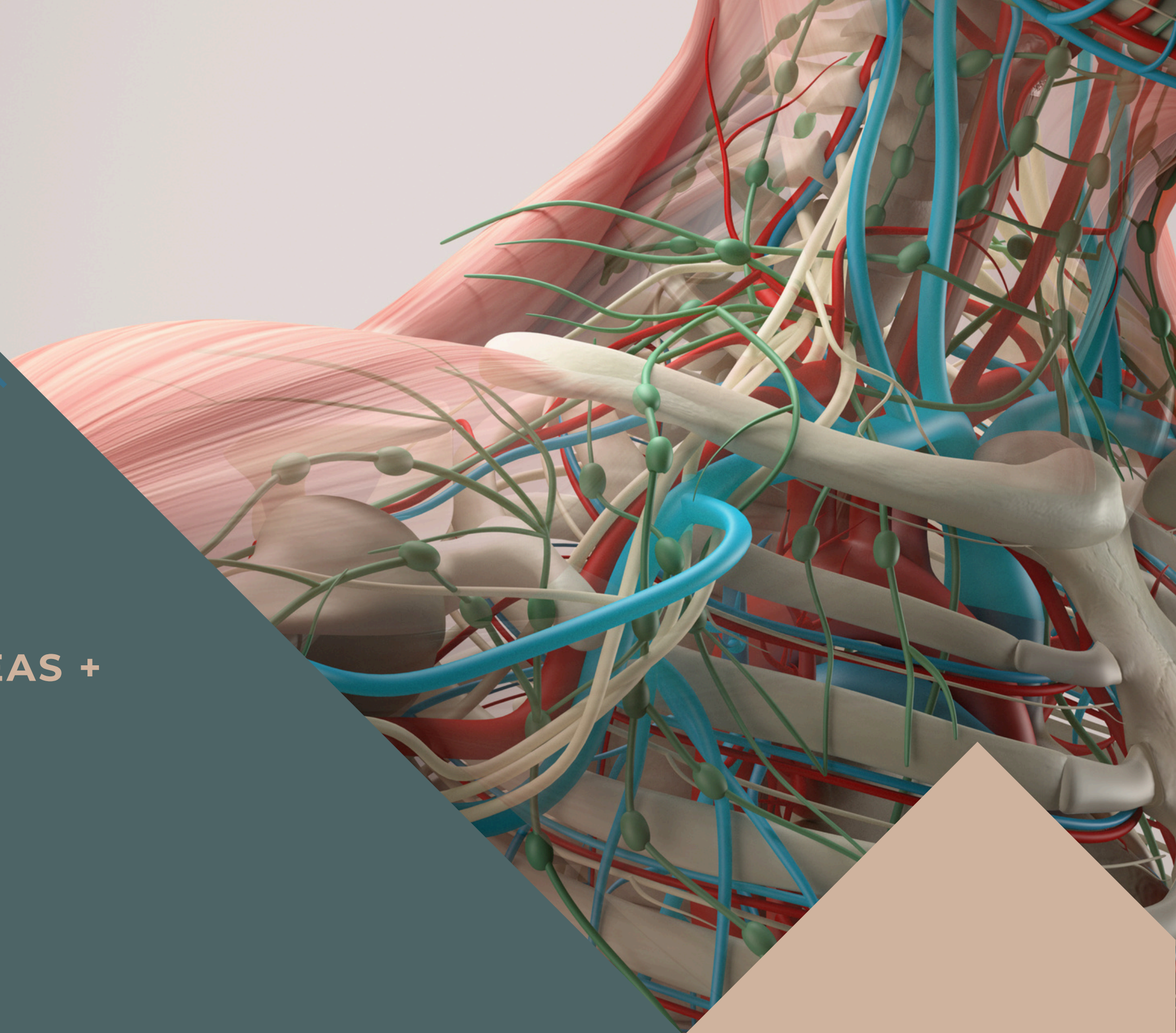
SATURN
MEDIC



ARECH

© ALL COPYRIGHT ARE RESERVED FOR
SATURN MEDIC AND ARECH

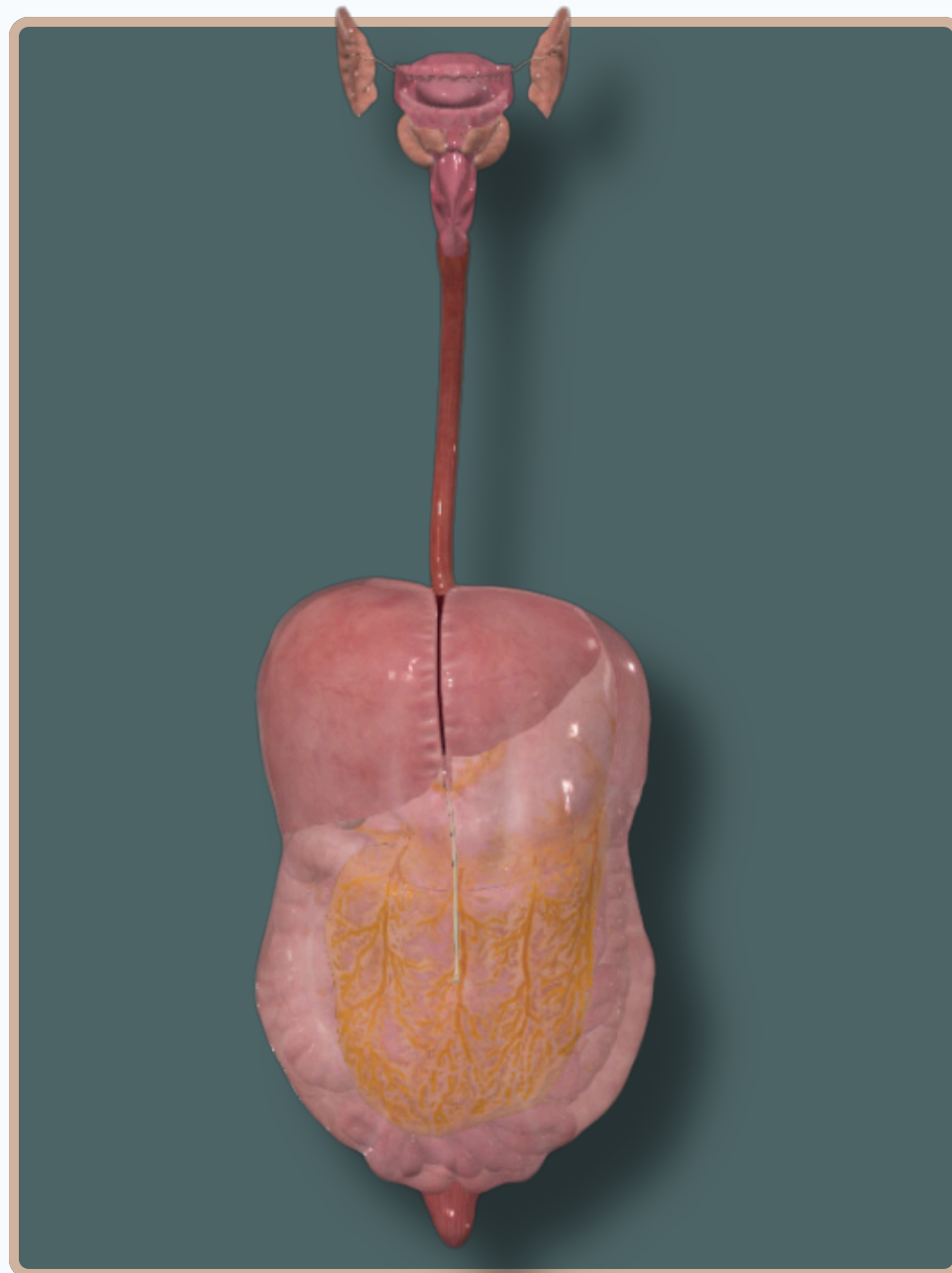
WWW.SATURNMEDIC.COM





ABDOMEN

DIGESTIVE TRACT



Anterior View

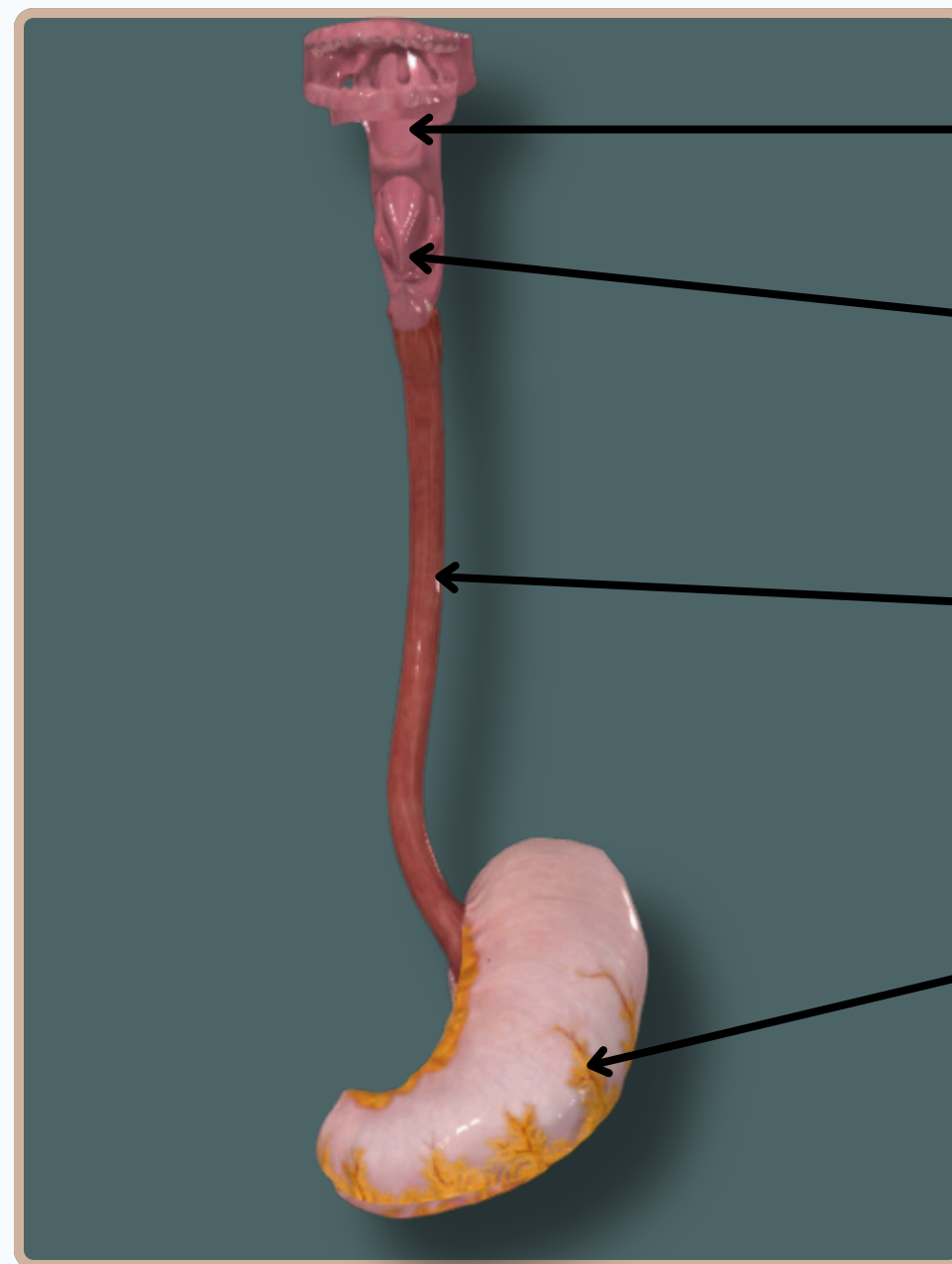


Posterior View

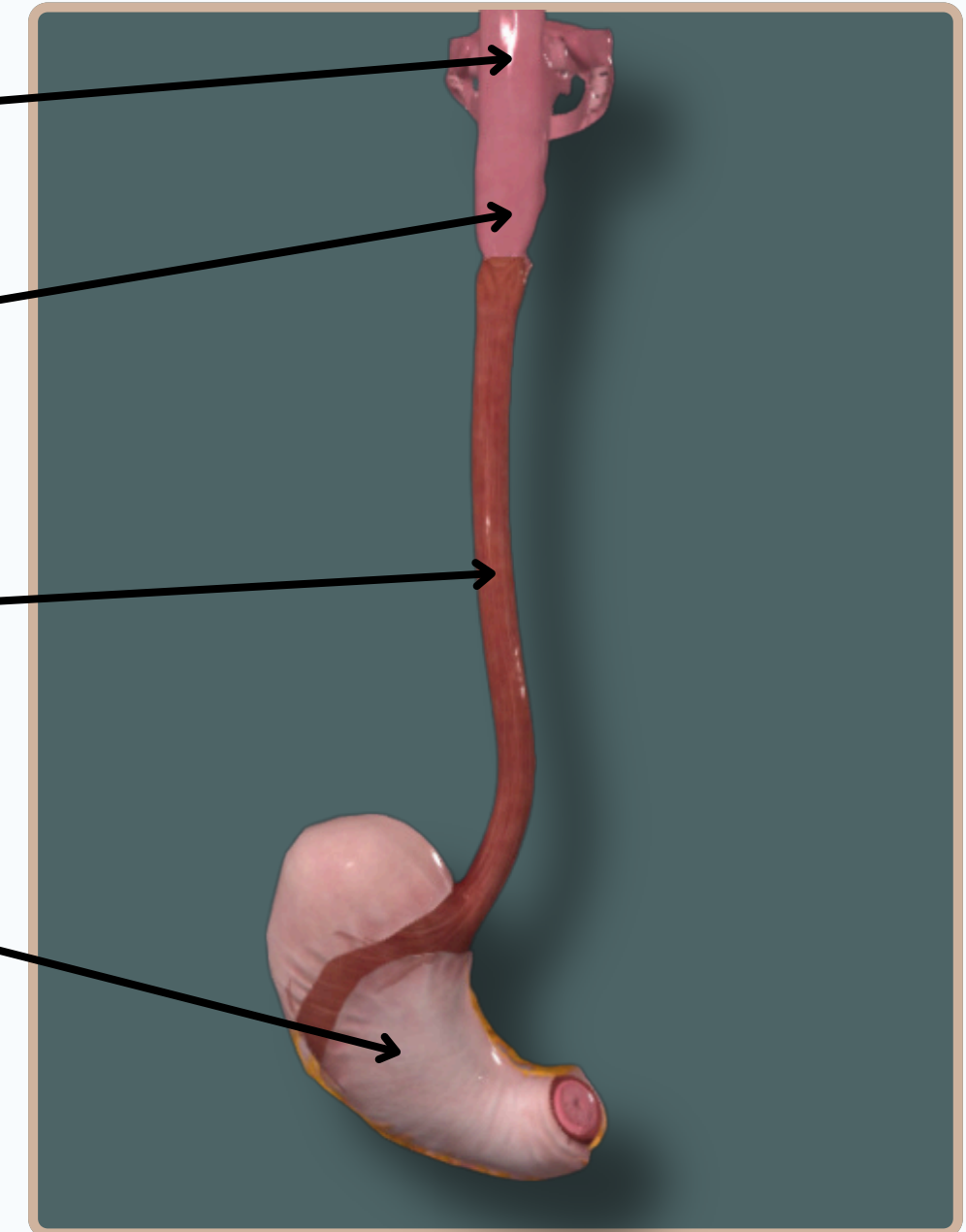


ABDOMEN

DIGESTIVE TRACT



Anterior View



Posterior View

Oropharynx

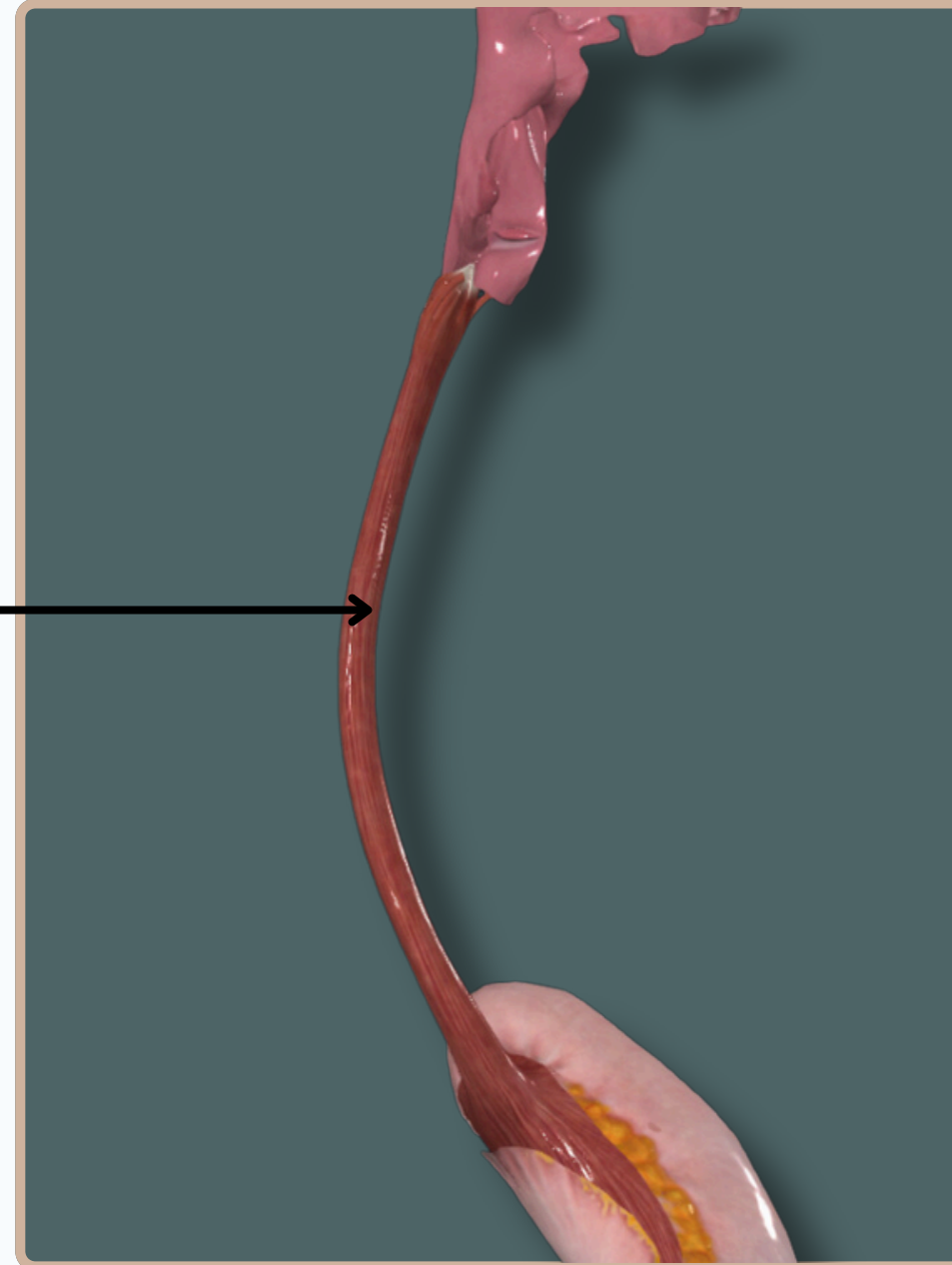
Laryngopharynx

Esophagus

Stomach

Esophagus

Is A **Long Muscular Tube (25-30cm)** That **Connects** The Throat (**Pharynx**) To The **Stomach**. It Plays A Crucial Role In The Digestive System By **Transporting** Food And Liquids From The Mouth To The Stomach

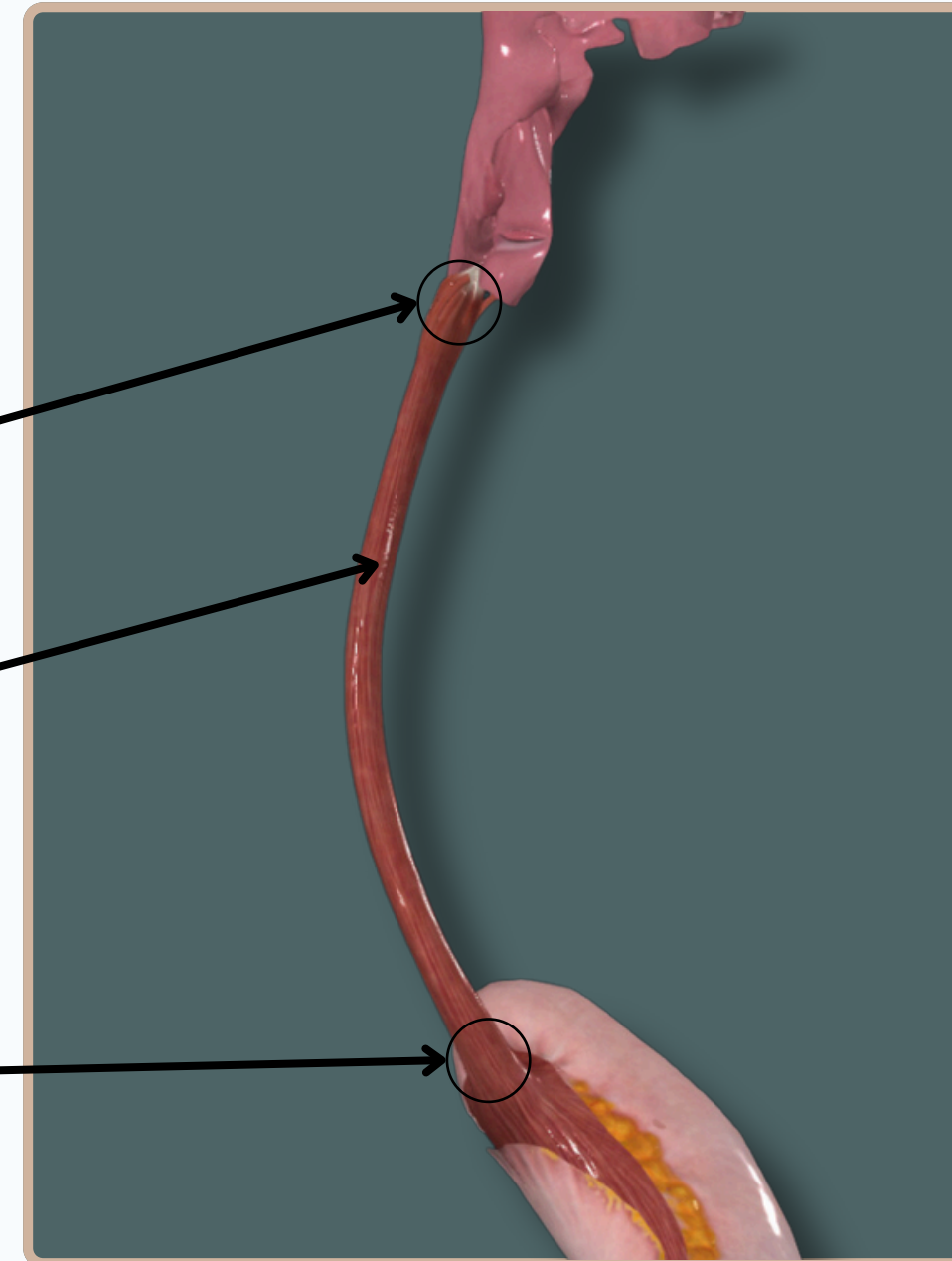


Anterior View

Esophagus

Muscularis Layer Is **Inner Circular** And **Outer Longitudinal**, Divided Into **Three** Parts :-

- **Proximal Third** : Muscularis Made By **Striated** Muscle Fibers And Forms **Upper Esophageal Sphincter (UES)**
- **Mid Portion** : A **Mixture** Of **Striated** And **Smooth** Muscle Fibers
- **Distal Third** : Consists Of **Only Smooth** Muscle Fibers Close To The Stomach, Form The **Lower Esophageal Sphincter (LES)**



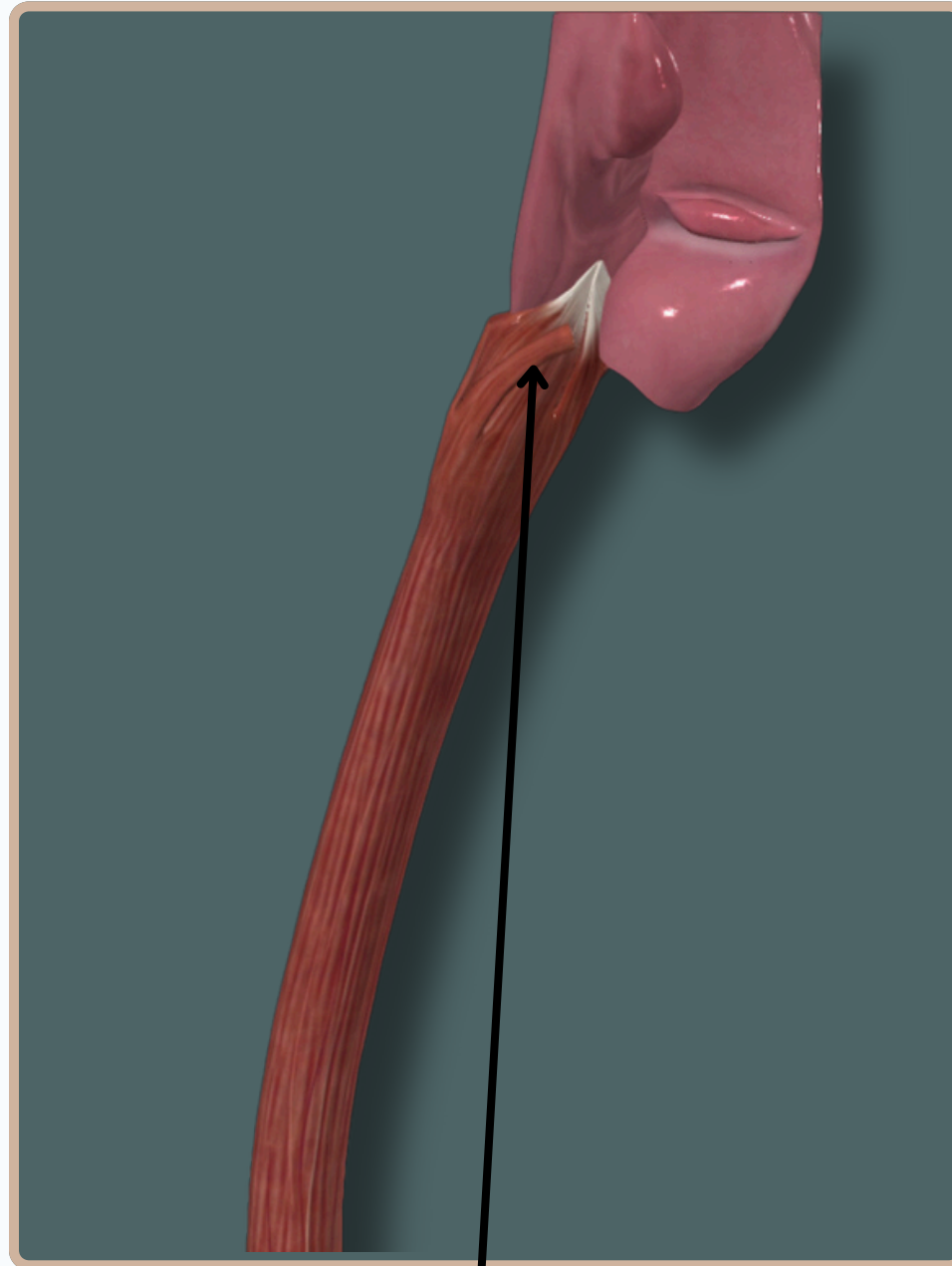
Anterior View



ABDOMEN



ESOPHAGUS

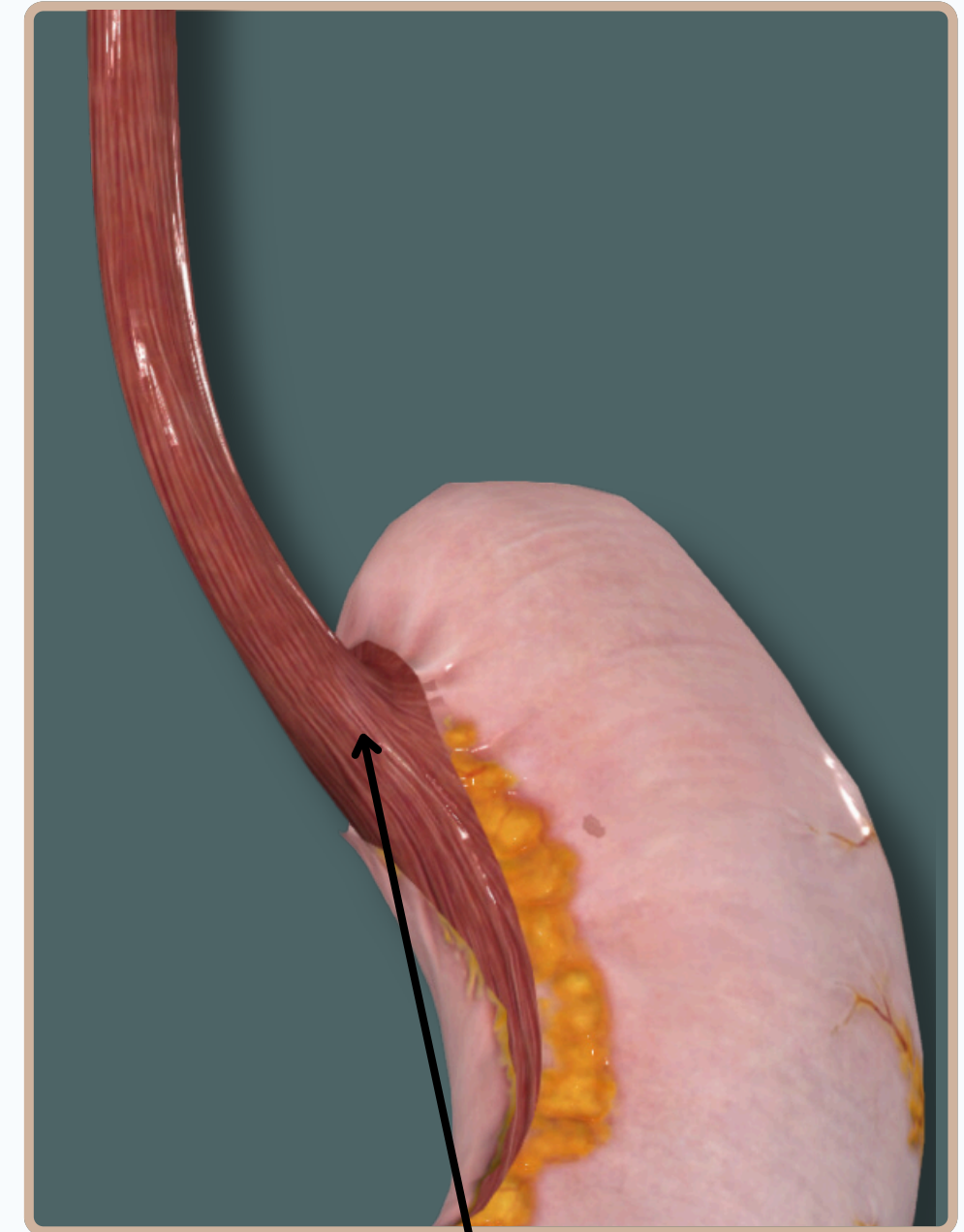


Proximal Third : Muscularis Made By Striated Muscle Fibers And Forms Upper Esophageal Sphincter (UES)



Mid Portion : A Mixture Of Striated And Smooth Muscle Fibers

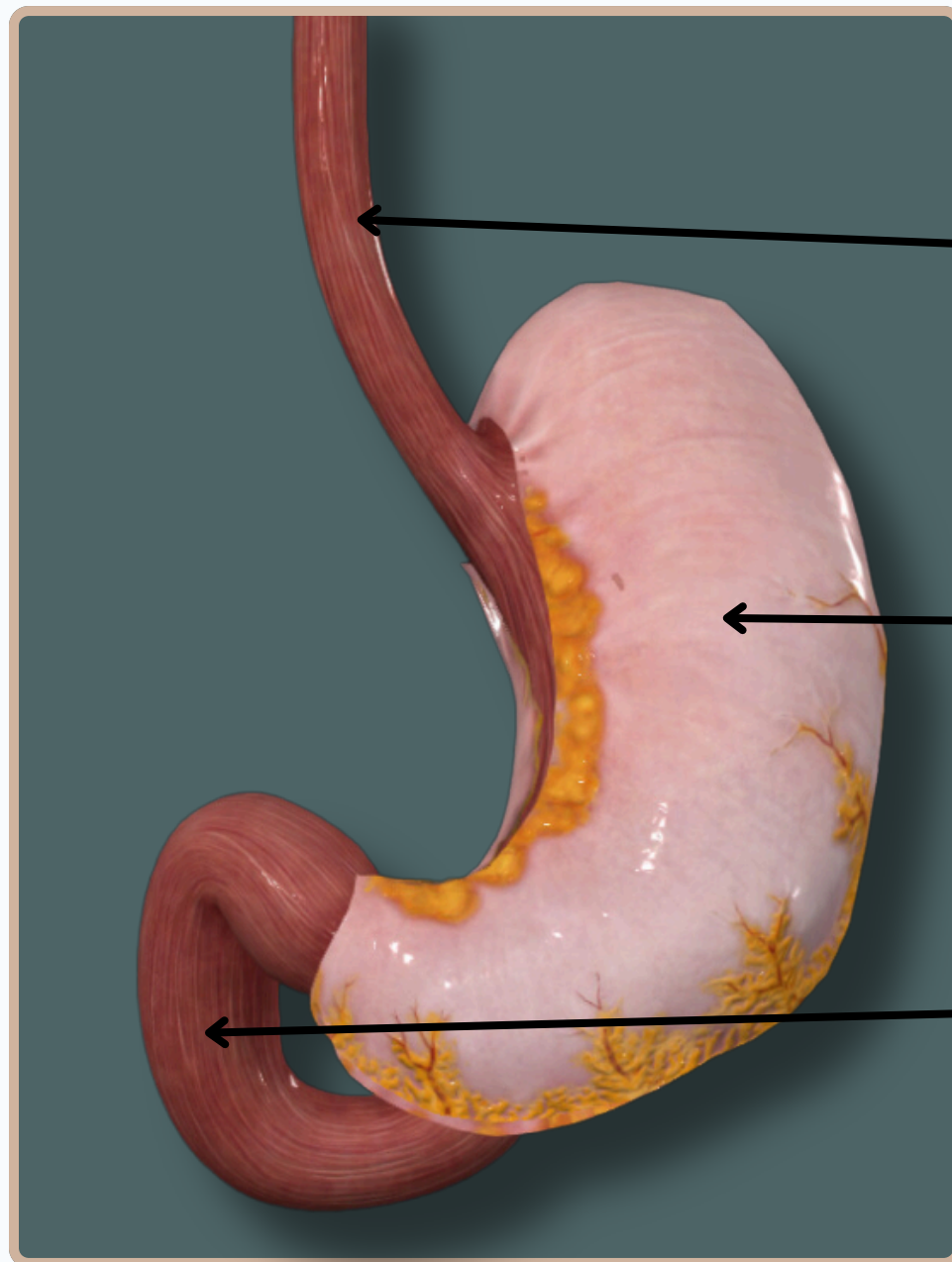
Anterior View



Distal Third : Consists Of Only Smooth Muscle Fibers Close To The Stomach, Form The Lower Esophageal Sphincter (LES)

ABDOMEN

STOMACH

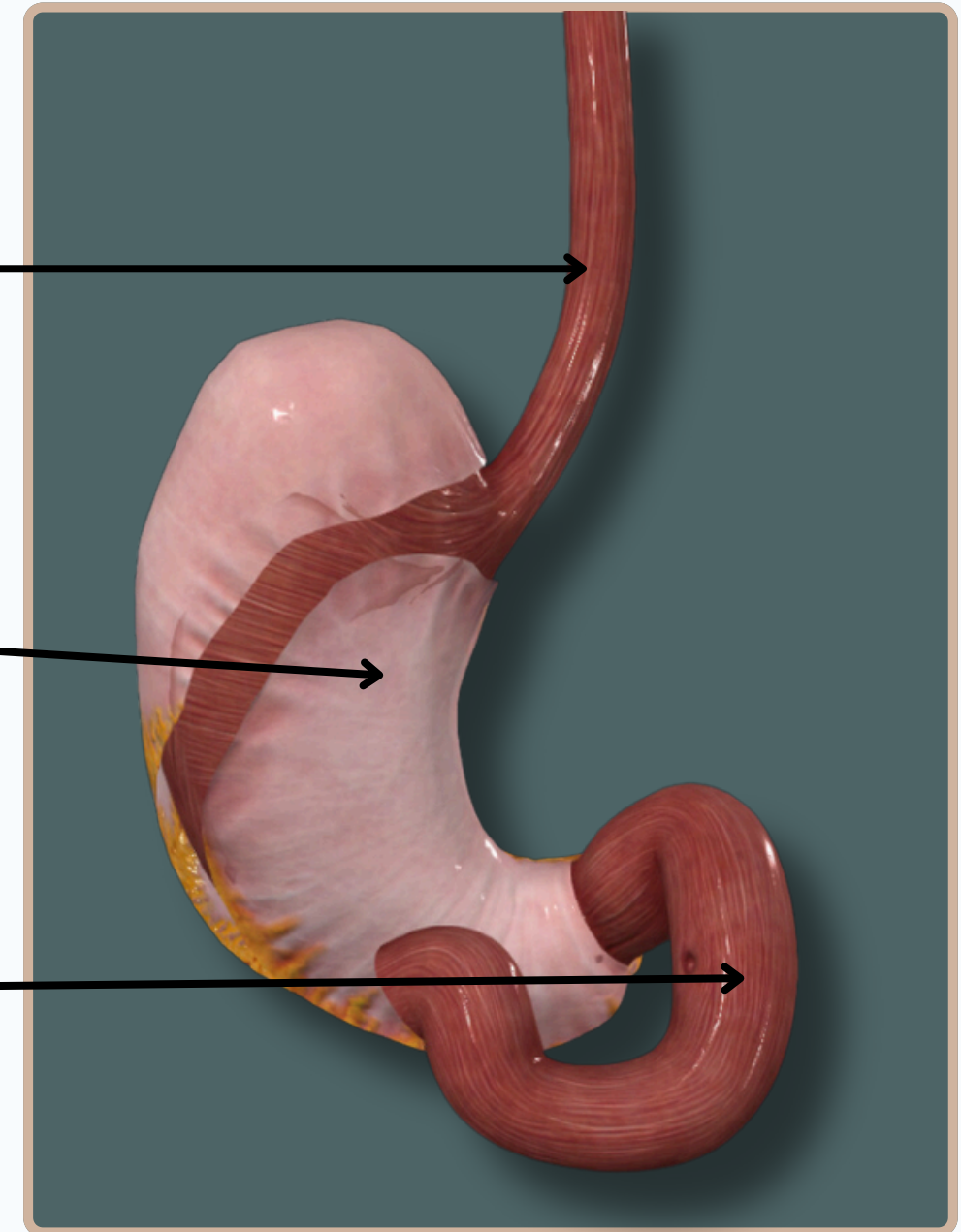


Anterior View

Esophagus

Stomach

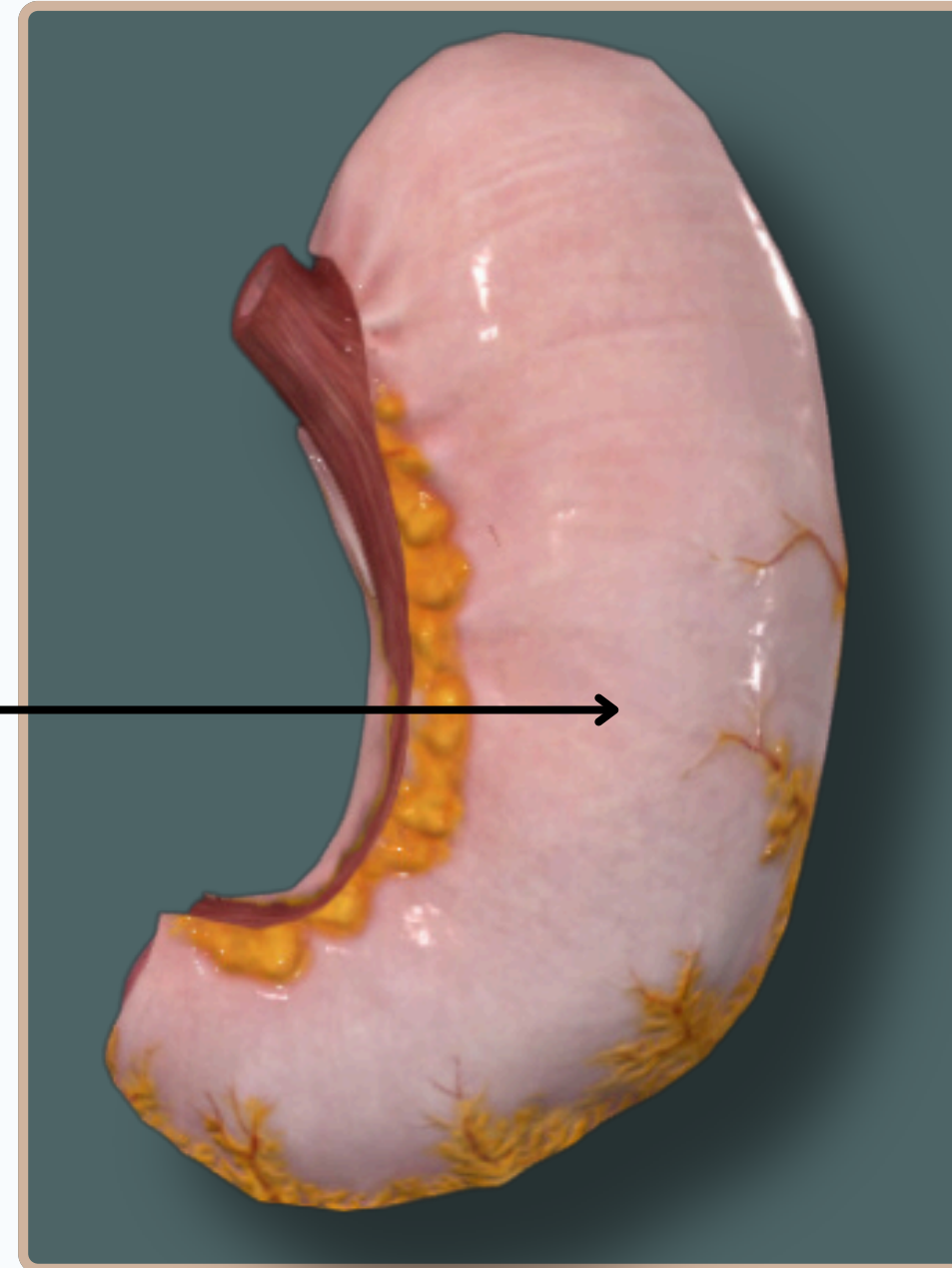
Duodenum



Posterior View

Stomach

A **Hollow, Muscular** Organ Located In The **Upper Abdomen**, Responsible For **Breaking Down** Food And Preparing It For **Digestion** And **Absorption** In The Intestines



Anterior View

ABDOMEN

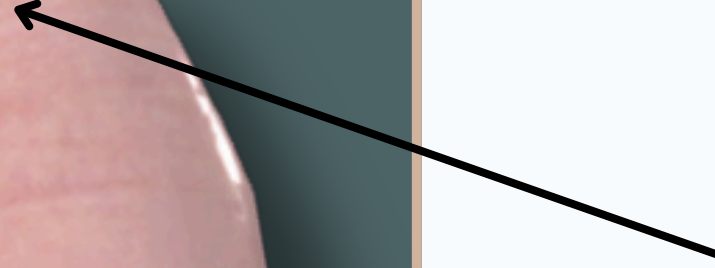
STOMACH



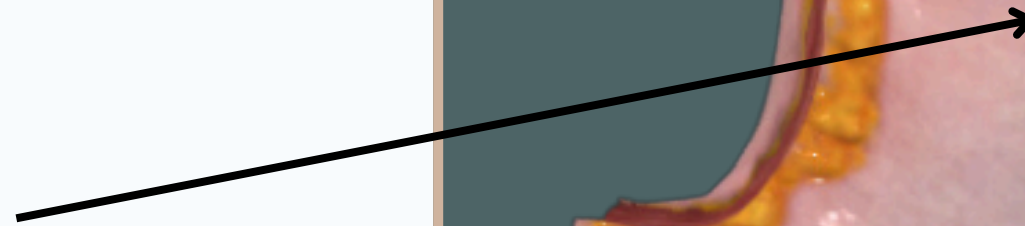
Cardia of The Stomach



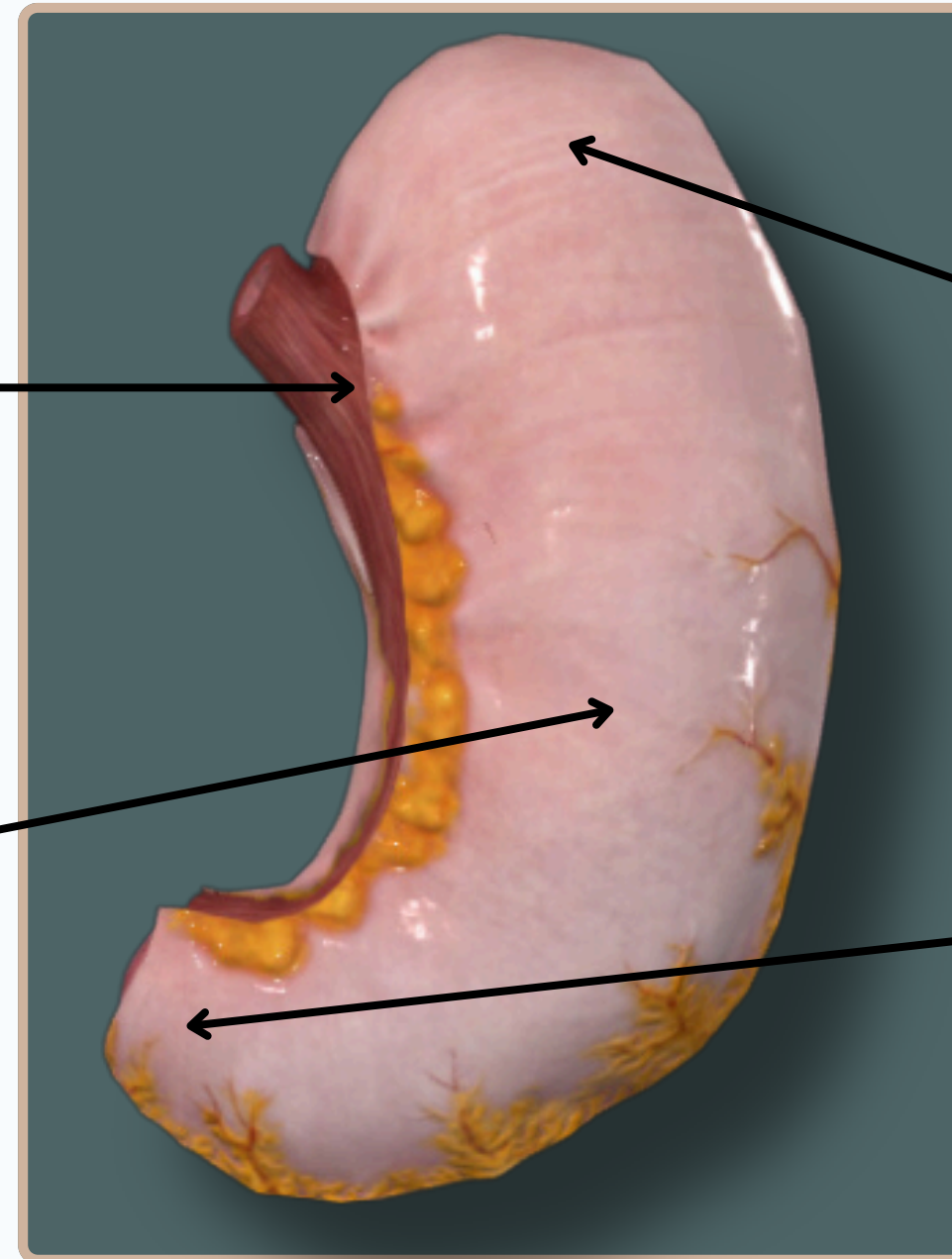
Fundus of The Stomach



Body of The Stomach



Pylorus of The Stomach

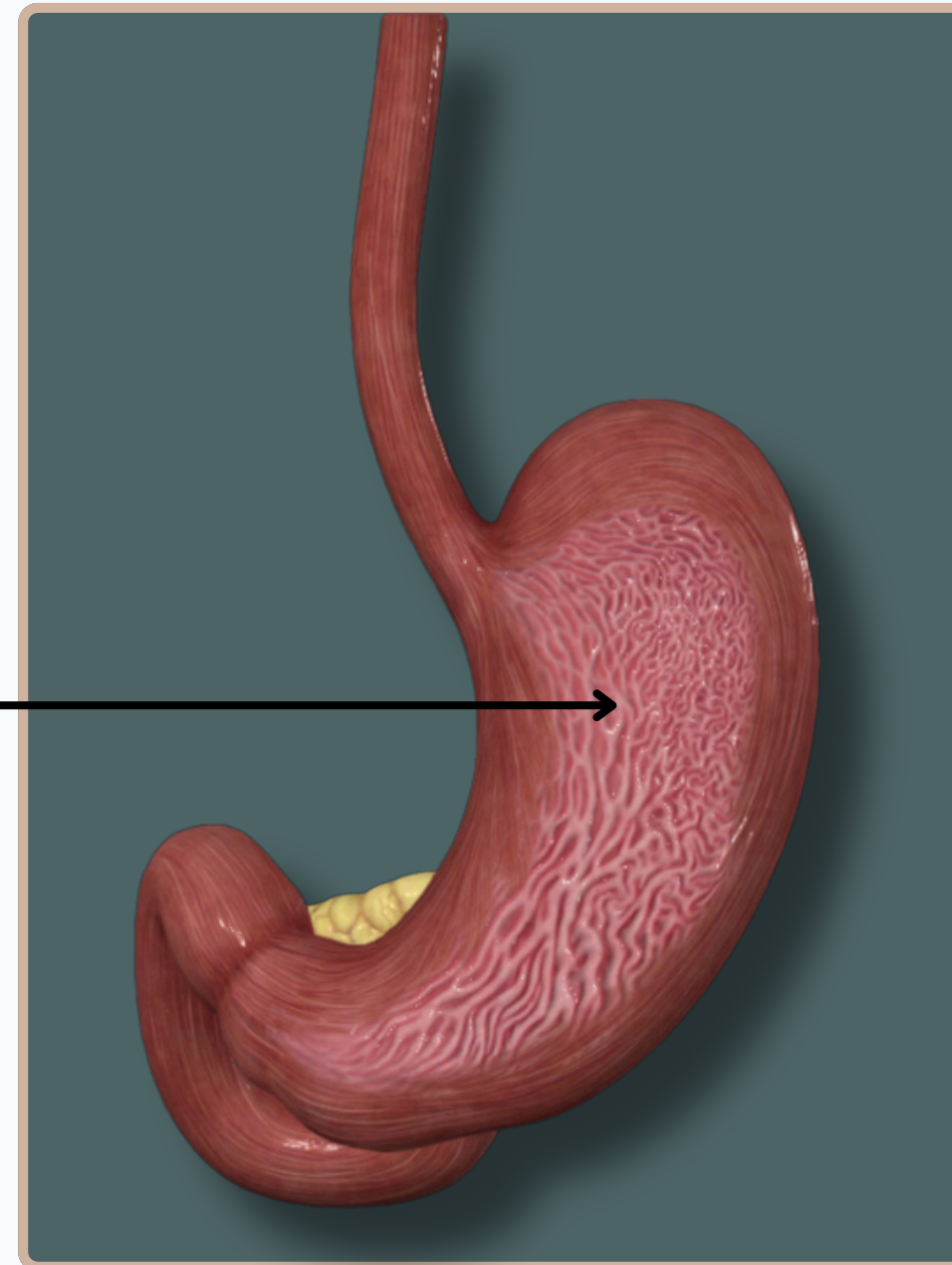


Anterior View



Rugae of The Stomach

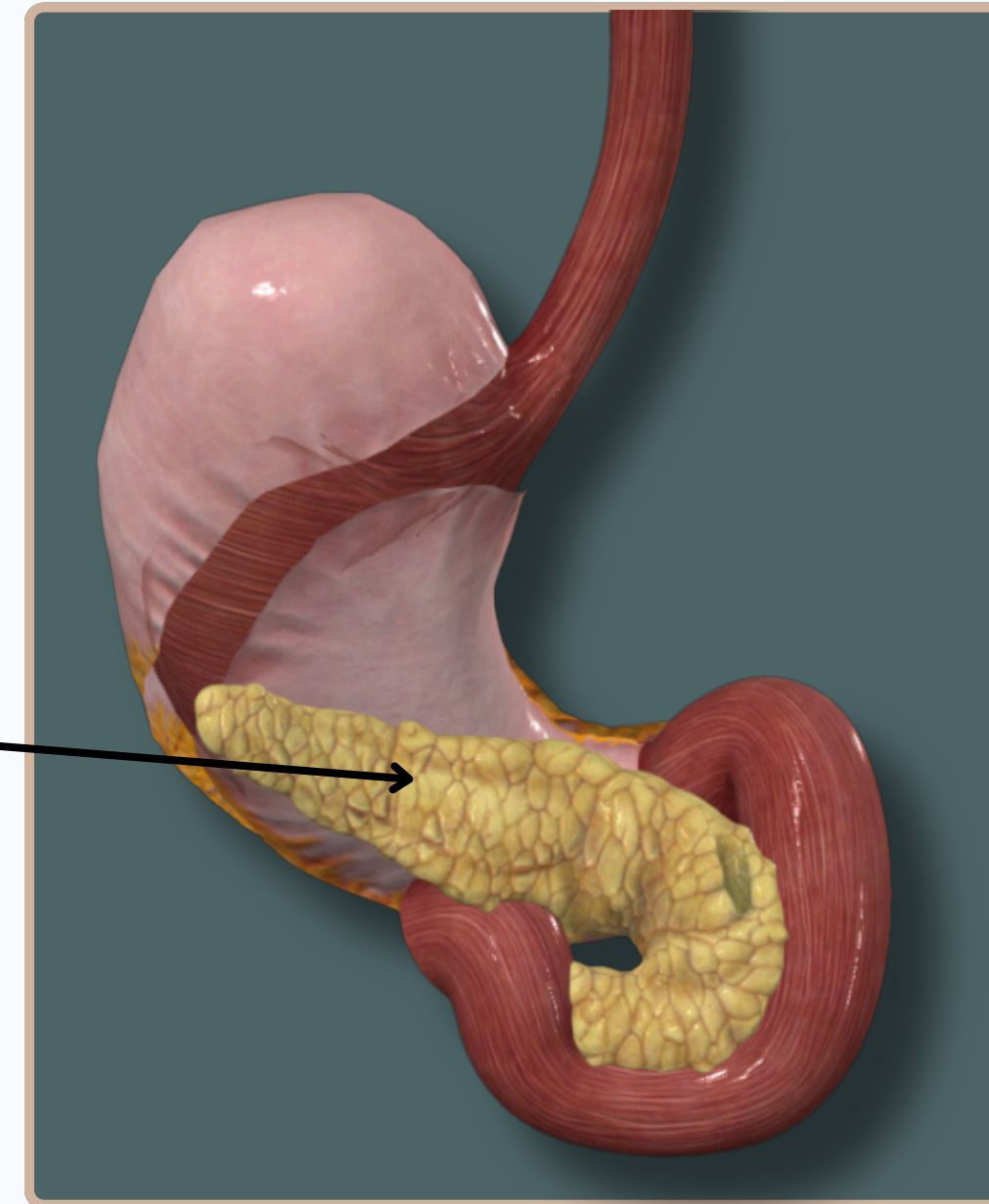
Their Main **Function** Is To Allow The Stomach To **Expand** When Food And Liquids Enter



Anterior View

Pancreas

The Pancreas Is A **Glandular** Organ Located **Behind** The Stomach. It Plays A Crucial Role In **Digestion** By Producing **Enzymes** That Help **Break Down** Carbohydrates, Proteins, And Fats In The Small Intestine. The Pancreas Also Functions As An **Endocrine Gland**, Producing Hormones Such As **Insulin And Glucagon** That Regulate Blood Sugar Levels

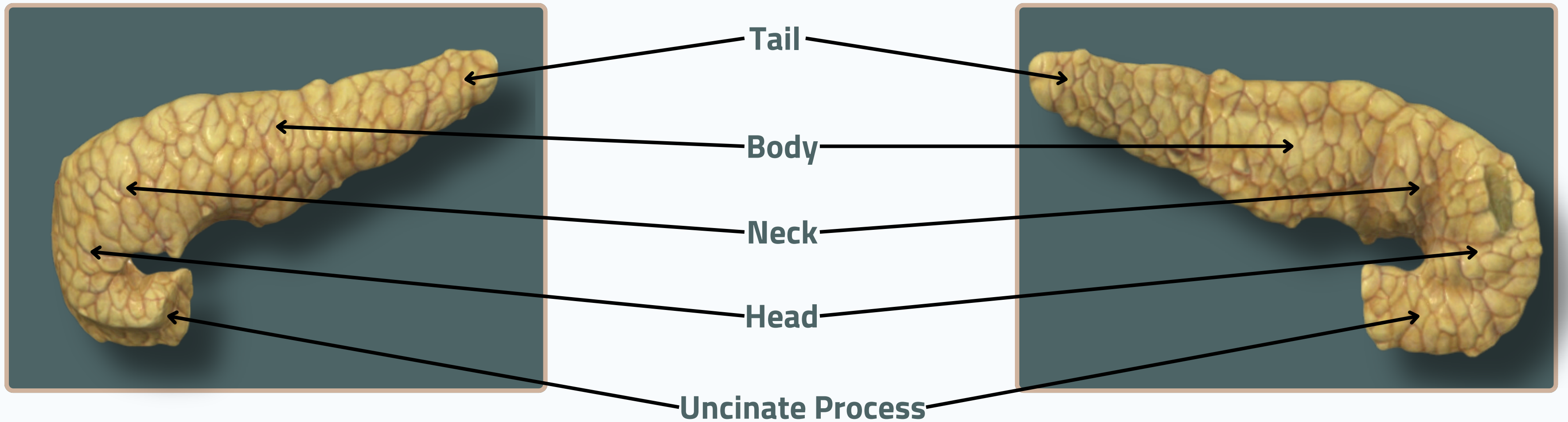


Posterior View



ABDOMEN

PANCREAS



Anterior View

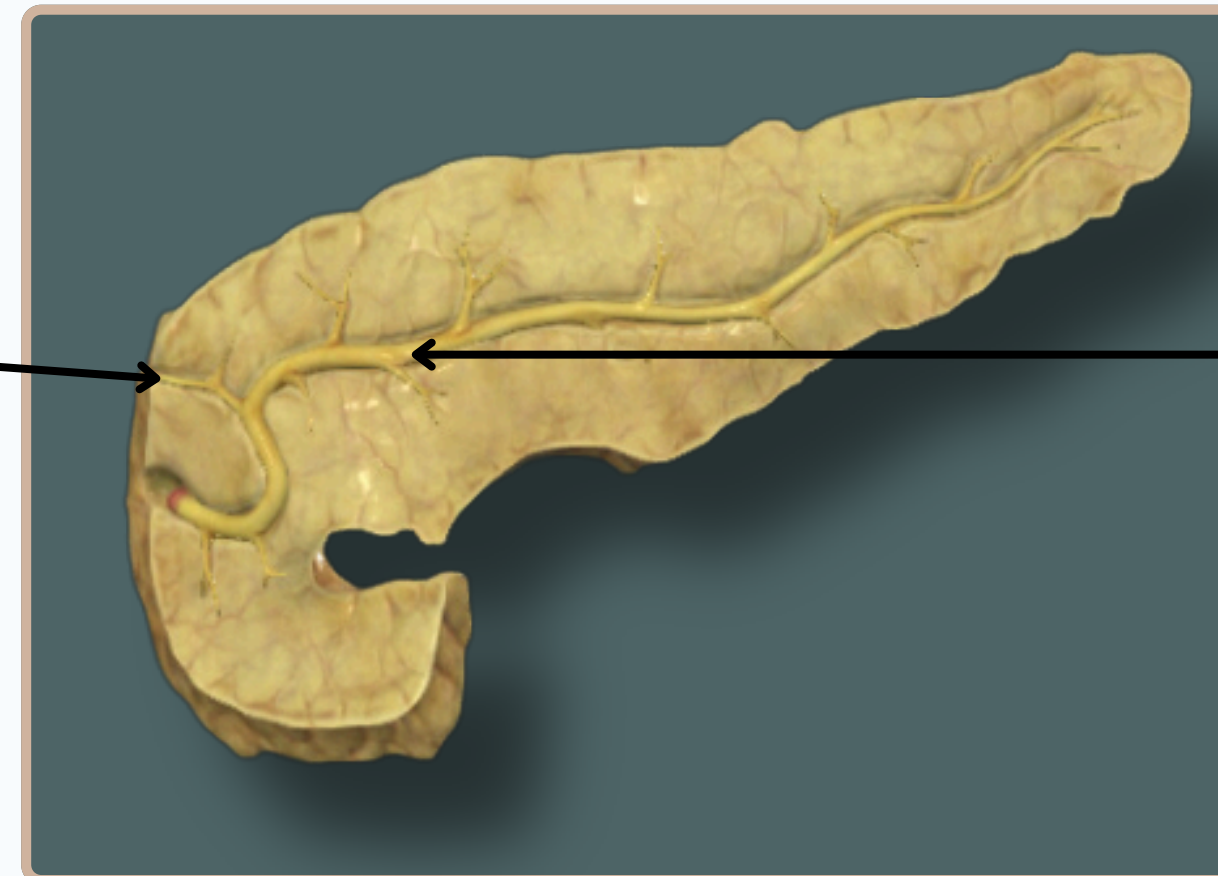
Posterior View

ABDOMEN

PANCREAS



Accessory Pancreatic Duct



Main Pancreatic Duct

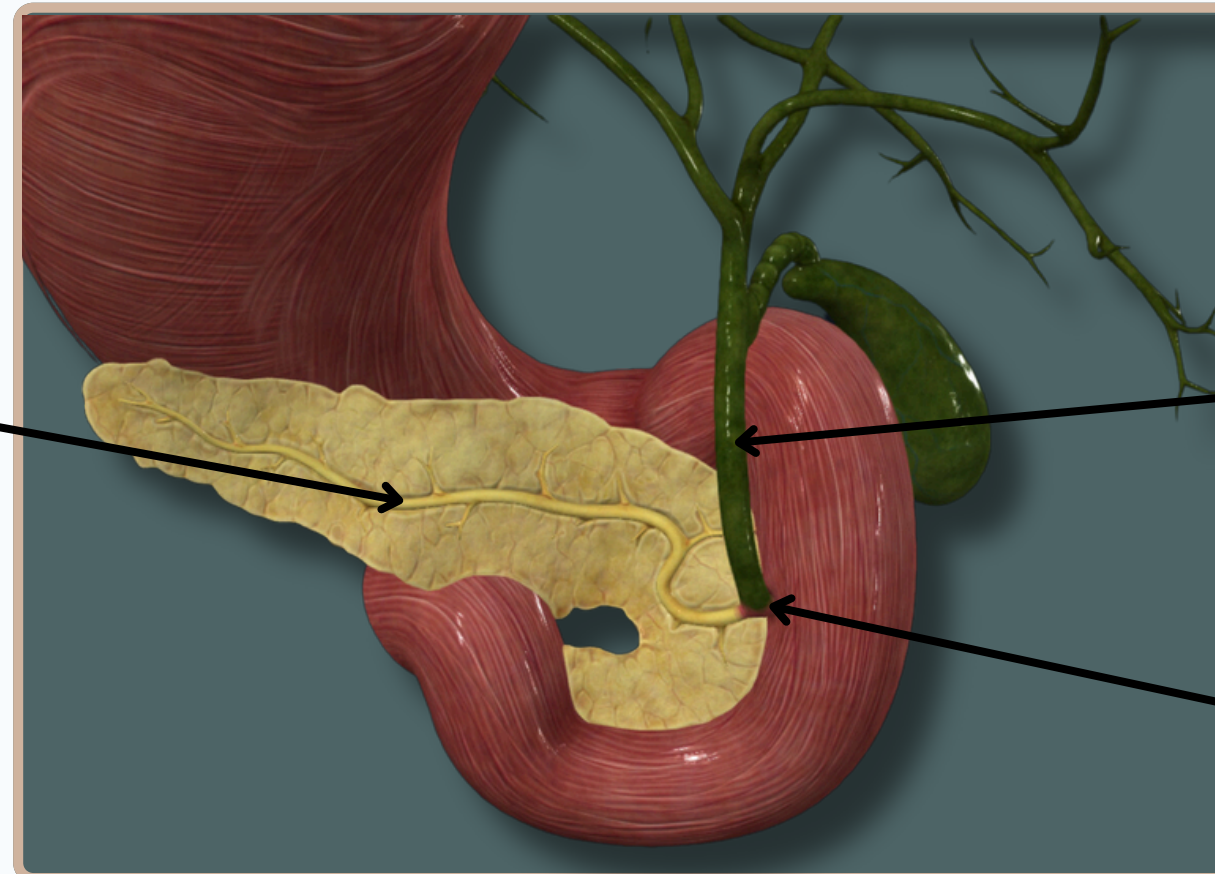
Anterior View

ABDOMEN

PANCREAS



**Main Pancreatic Duct
(Wirsung)**



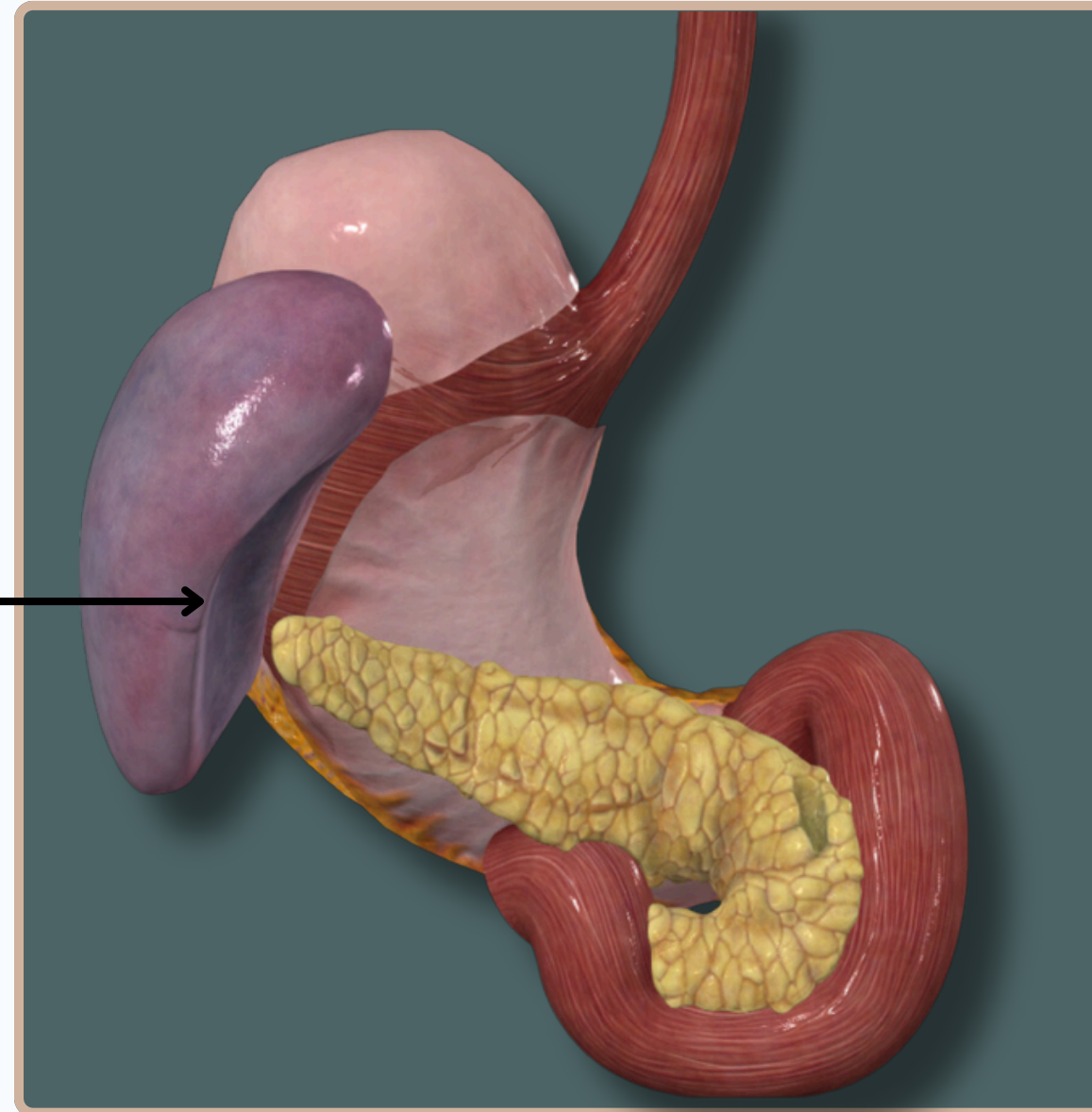
Bile Duct

Hepatopancreatic Ampulla

Posterior View

Spleen

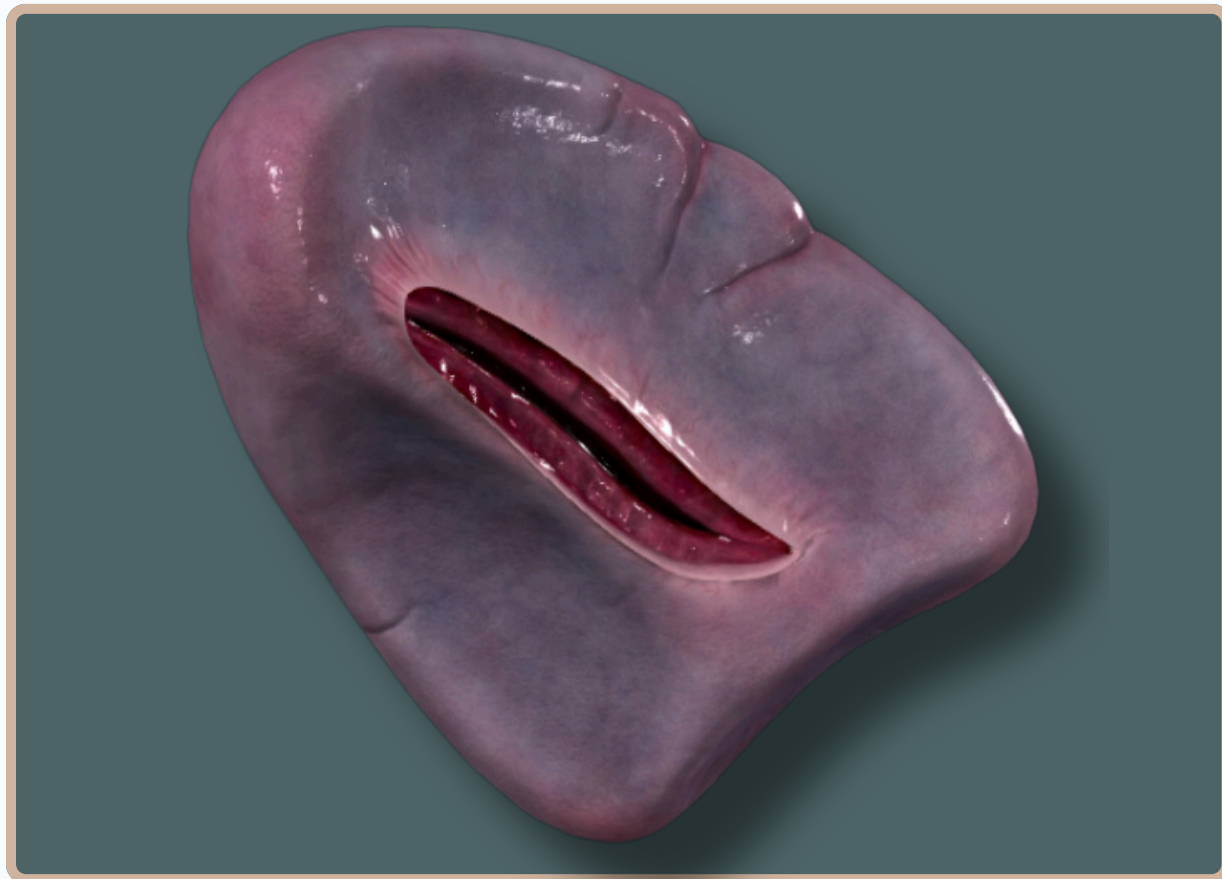
An Organ Located In The Upper Left Side Of The Abdomen. It Plays A Key Role In **Filtering Blood, Removing** Old Or Damaged Red Blood Cells, And Helping To **Fight Infection**



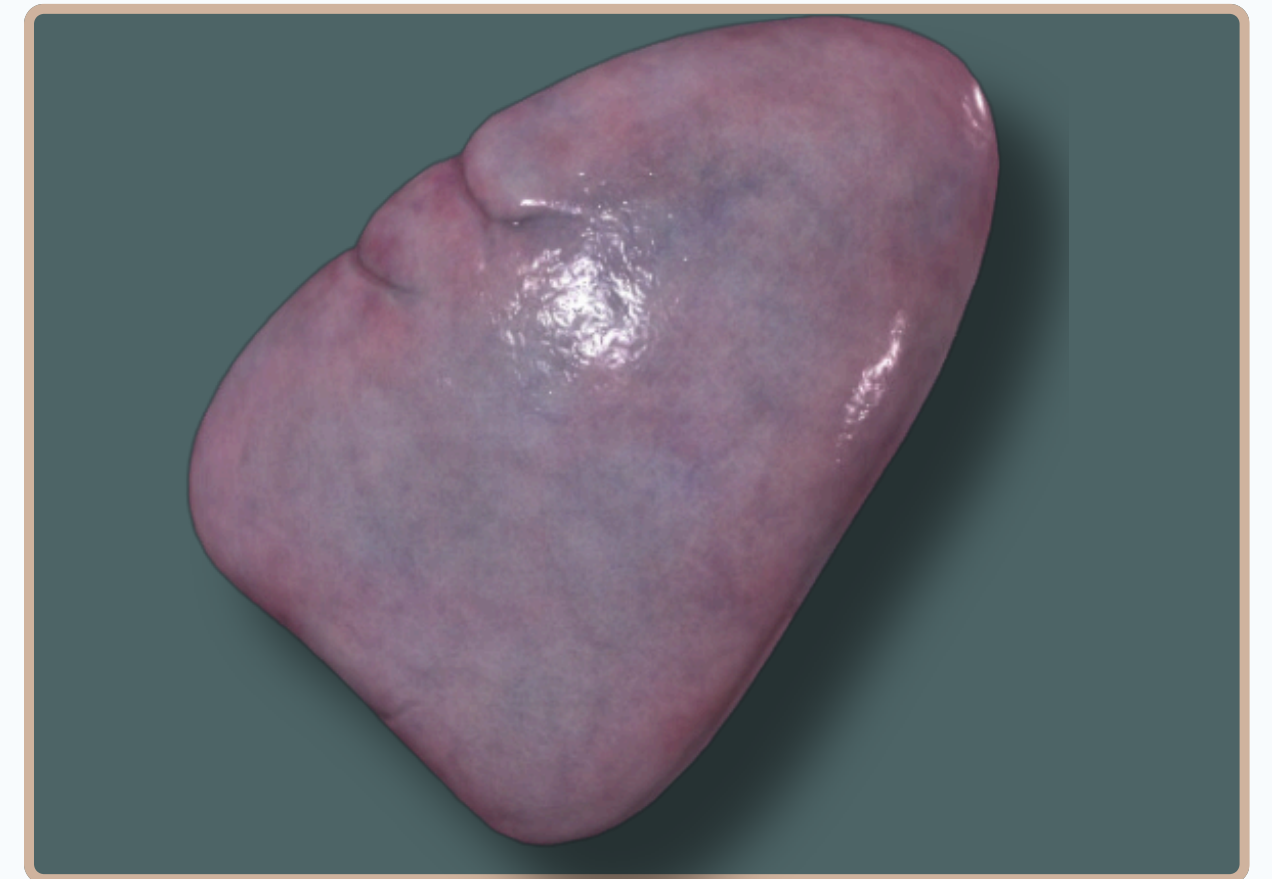
Posterior View

ABDOMEN

SPLEEN



Anterior View



Posterior View

ABDOMEN

SPLEEN

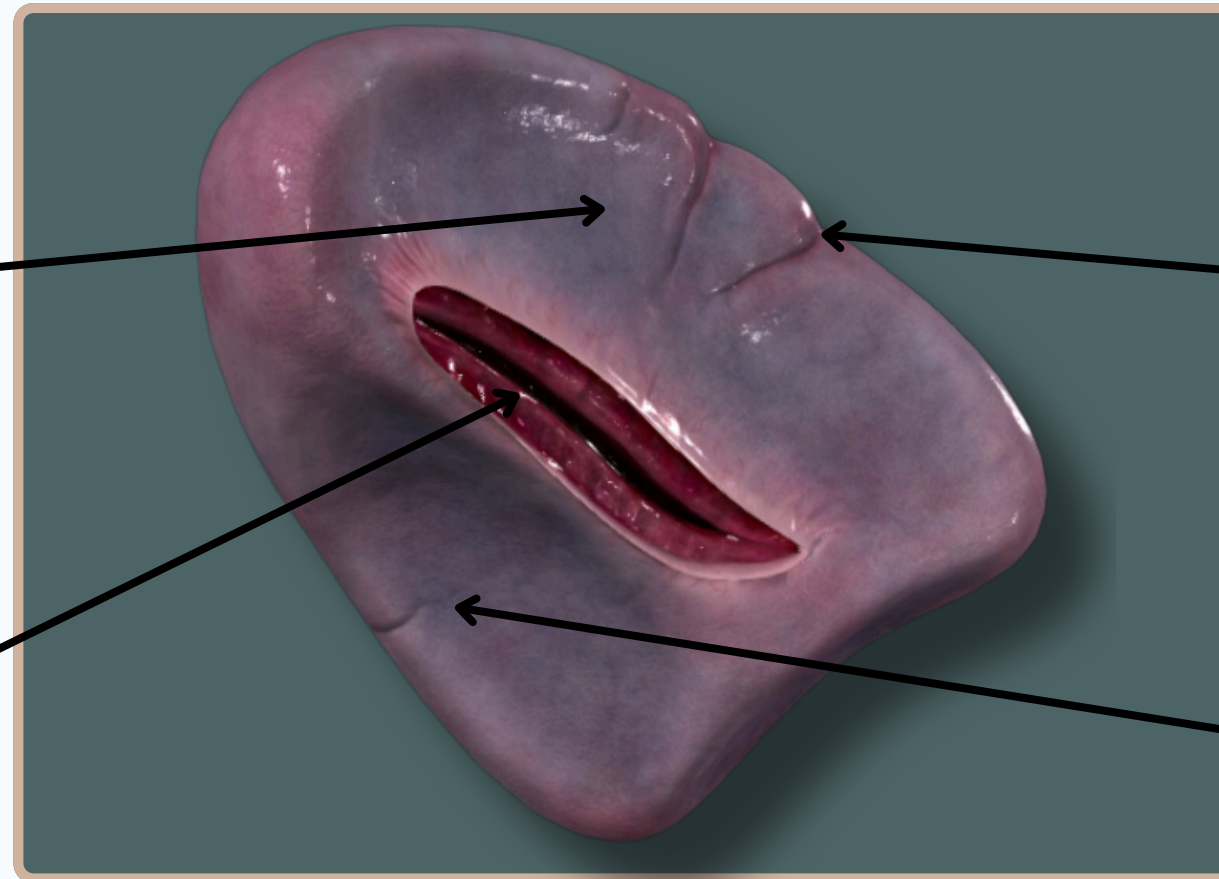


Gastric Surface

Splenic Notch

Hilum of The Spleen

Renal Surface



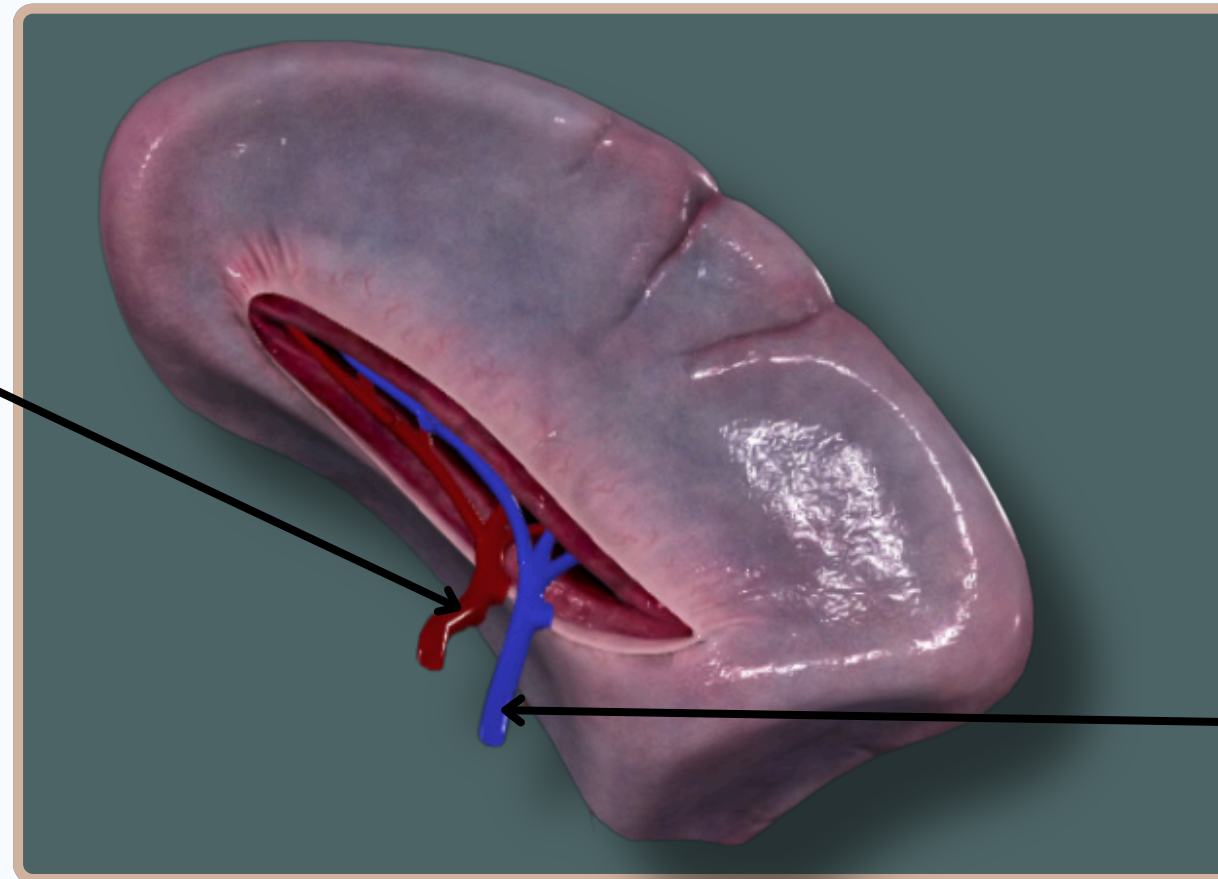
Anterior View

ABDOMEN

SPLEEN



Splenic Artery



Splenic Vein

Anterior View

THANK YOU

EDITED BY



SATURN
MEDIC



ARECH

© ALL COPYRIGHT ARE RESERVED FOR
SATURN MEDIC AND ARECH

WWW.SATURNMEDIC.COM